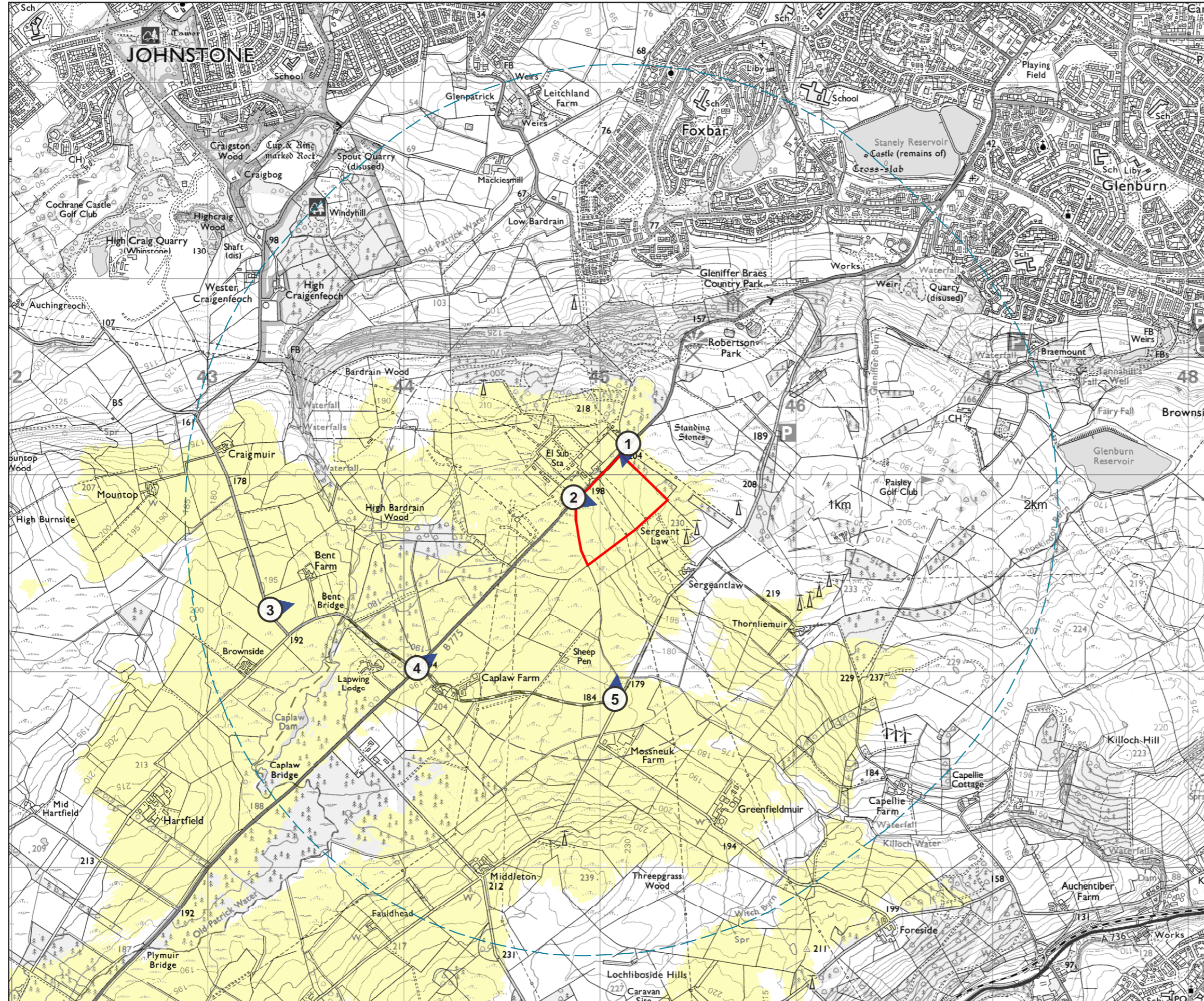


Figure 1 - Zone of Theoretical Visibility



Key

- Site Boundary
- 2 km Study Area
- Predicted Visibility
- Viewpoints

1. B775 (North)
2. B775 (South)
3. Unclassified Road (Southwest)
4. Caplaw Road, B775 Junction
5. Unclassified Road (South)

Notes:
 The calculations of this map are based on the 'bare earth' model of the landform and do not allow for any effects of screening from obstacles such as buildings and vegetation. The landform data was taken from Ordnance Survey Terrain 5 digital terrain model (gridded height data at 5m intervals).

Figure Data:
 This figure has been based on the following height:
 Battery and Inverted Skid: 3.8m
 Protection Control Building: 5.5m

0 500m 1km

Date 25/04/24 Scale@A3 1:20 000 Produced By OM Checked By NH Rev.

Figure 2 - Landscape Character

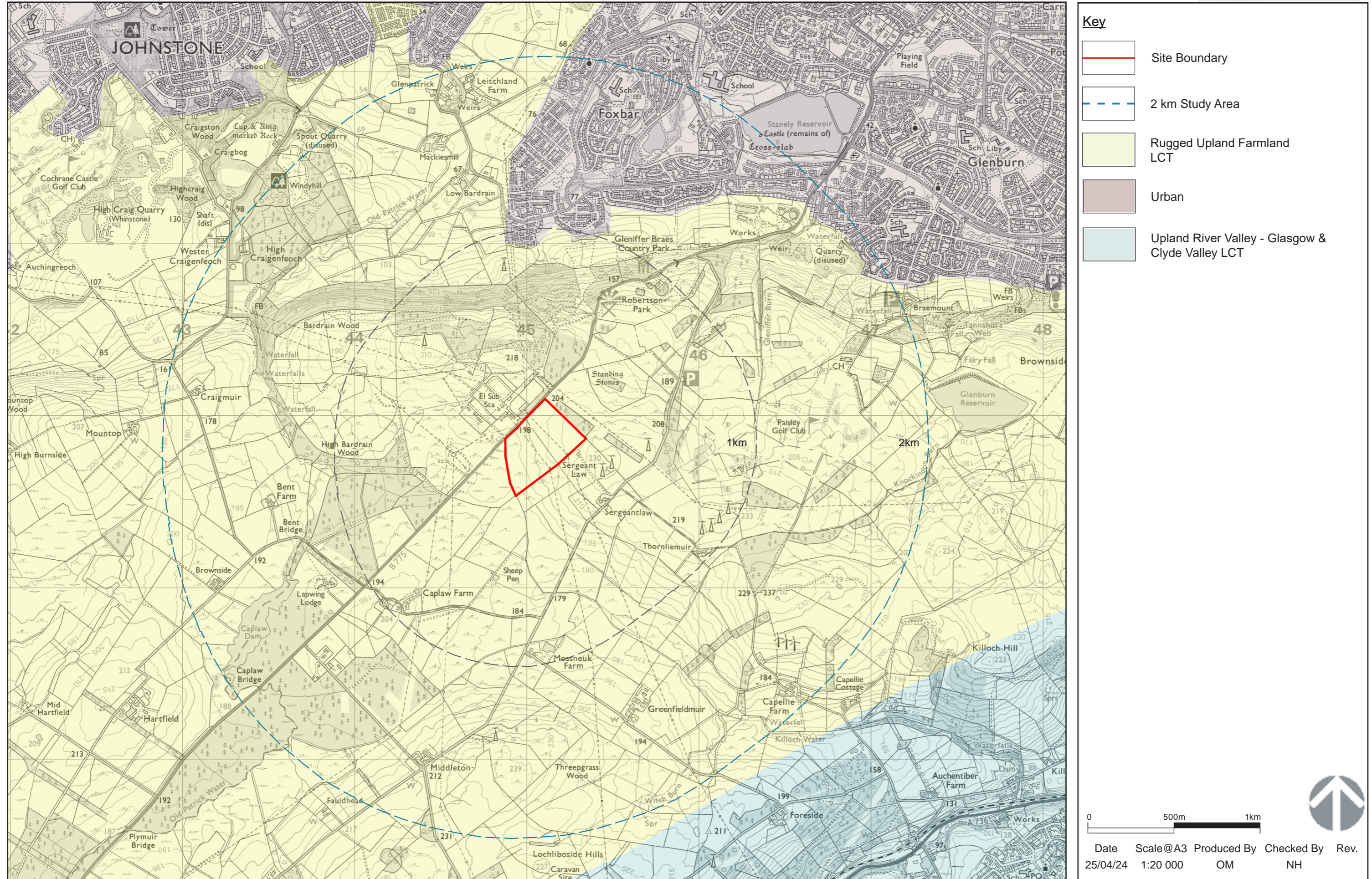
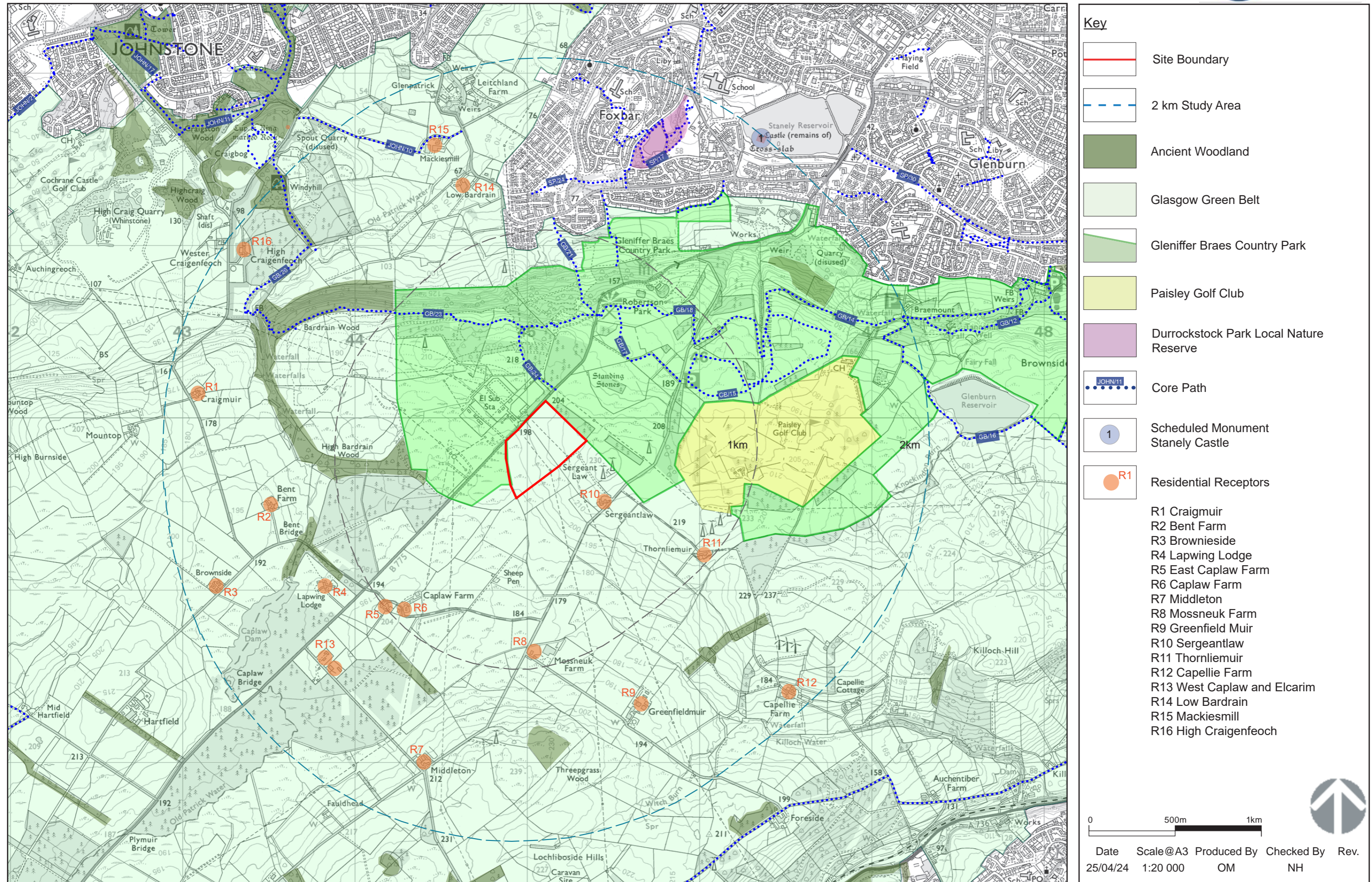


Figure 3 - Landscape Designations, Ancient Woodland and Visual Receptors



Key

- Site Boundary
- 2 km Study Area
- Ancient Woodland
- Glasgow Green Belt
- Gleniffer Braes Country Park
- Paisley Golf Club
- Durrockstock Park Local Nature Reserve
- Core Path
- Scheduled Monument Stanelly Castle
- Residential Receptors

R1 Craigmuir
 R2 Bent Farm
 R3 Brownside
 R4 Lapwing Lodge
 R5 East Caplaw Farm
 R6 Caplaw Farm
 R7 Middleton
 R8 Mossneuk Farm
 R9 Greenfield Muir
 R10 Sergeantlaw
 R11 Thornliemuir
 R12 Capellie Farm
 R13 West Caplaw and Elcarim
 R14 Low Bardrain
 R15 Mackiesmill
 R16 High Craigenfeoch

Date 25/04/24 Scale@A3 1:20 000 Produced By OM Checked By NH Rev.