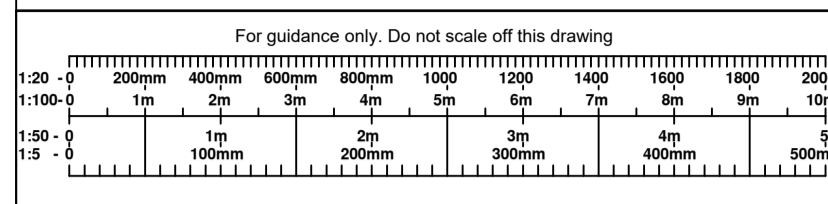


Notes:-

- 1) Scheme utilises LED luminaires with sharp cut-off, good colour rendition. No metal halide or fluorescent fittings used.
- 2) Fittings capable of being dimmed.
- 3) Lanterns utilise 2700K LEDs.
- 4) All columns limited to a height of 6m.
- 5) All fitting have upward light ration of 0%.
- 6) All fittings installed horizontally - no upward lighting.
- 7) Security lighting controlled by motion sensors.
- 8) The lighting details shown on this drawing have been developed in accordance with the Bat Conservation Trust's Guidance Note 08/23 on Bats and Artificial Lighting in the UK and reviewed by a suitably qualified ecologist.

© 2019 RPS Group

- Notes
1. This drawing has been prepared in accordance with the scope of RPS's appointment with its client and is subject to the terms and conditions of that appointment. RPS accepts no liability for any use of this document other than by its client and only for the purposes for which it was prepared and provided.
 2. If received electronically it is the recipient's responsibility to print to correct scale. Only written dimensions should be used.
 3. This drawing should be read in conjunction with all other relevant drawings and specifications.



Safety, Health & Environment Information

In addition to the hazards / risks normally associated with the types of work detailed on this drawing take note below. It is assumed that all works on this drawing will be carried out by a competent contractor, working, where appropriate, to an appropriate method statement.

Construction risks	Maintenance/Cleaning risks	Demolition/Adaption risks

- A1** Kingfisher 72W LED 2700K 100mA ITALO 1 (4 module) with S05 optic column mounted at 6m
 - A2** Kingfisher 2 No 72W LED 2700K 100mA ITALO 1 (4 module) with S05 optic column mounted at 6m
 - B1** Kingfisher 37.4W LED 2700K 100mA ITALO 1 (2 module) with S07 optic column mounted at 6m
 - B2** Kingfisher 2 No. 37.4W LED 2700K 100mA ITALO 1 (2 module) with S07 optic column mounted at 6m
 - C1** Kingfisher 67.7W ITALO 1 Penta LED 2700K (2 module) with S05 optic column mounted at 6m
- 1 Lux
 - 2 Lux
 - 3 Lux
 - 5 Lux
 - 10 Lux

Calculation Summary

	Average (lx)	Max (lx)	Min (lx)	Uniformity (Min/Avg)
Battery Storage	14.67	95	3	0.20
Internal Roads	20.30	89	5	0.25
Welfare Area	20.15	51	5	0.25

P02	Site layout updated. Lighting scheme amended to suit.	DB	RP	05.02.25
P01	First issue	DB	RP	15.01.25
Rev	Description	By	Ckd	Date



1 Newhall Street,
Birmingham, West Midlands, B3 2NH
T: 0121 622 8520 E: rpsbm@rpsgroup.com

Client **Statkraft**

Project **Swansea BESS**

Title **External Lighting Planning**

Status	Scale	Date Created
Planning	1:500 @A1	06.01.25
Task Team Manager	Information Author	Task Information Manager
SB	DB	RP

Document Number
BSL31147-RPS-xx-GF-DR-E-6301
Project Code - Originator - Zone - Level - Type - Role - Drawing Number

RPS Project Number	Suitability	Revision
BSL31147	S03	P02

rpsgroup.com