

Figure 6 - Zone of Theoretical Visibility with Screening and Viewpoints

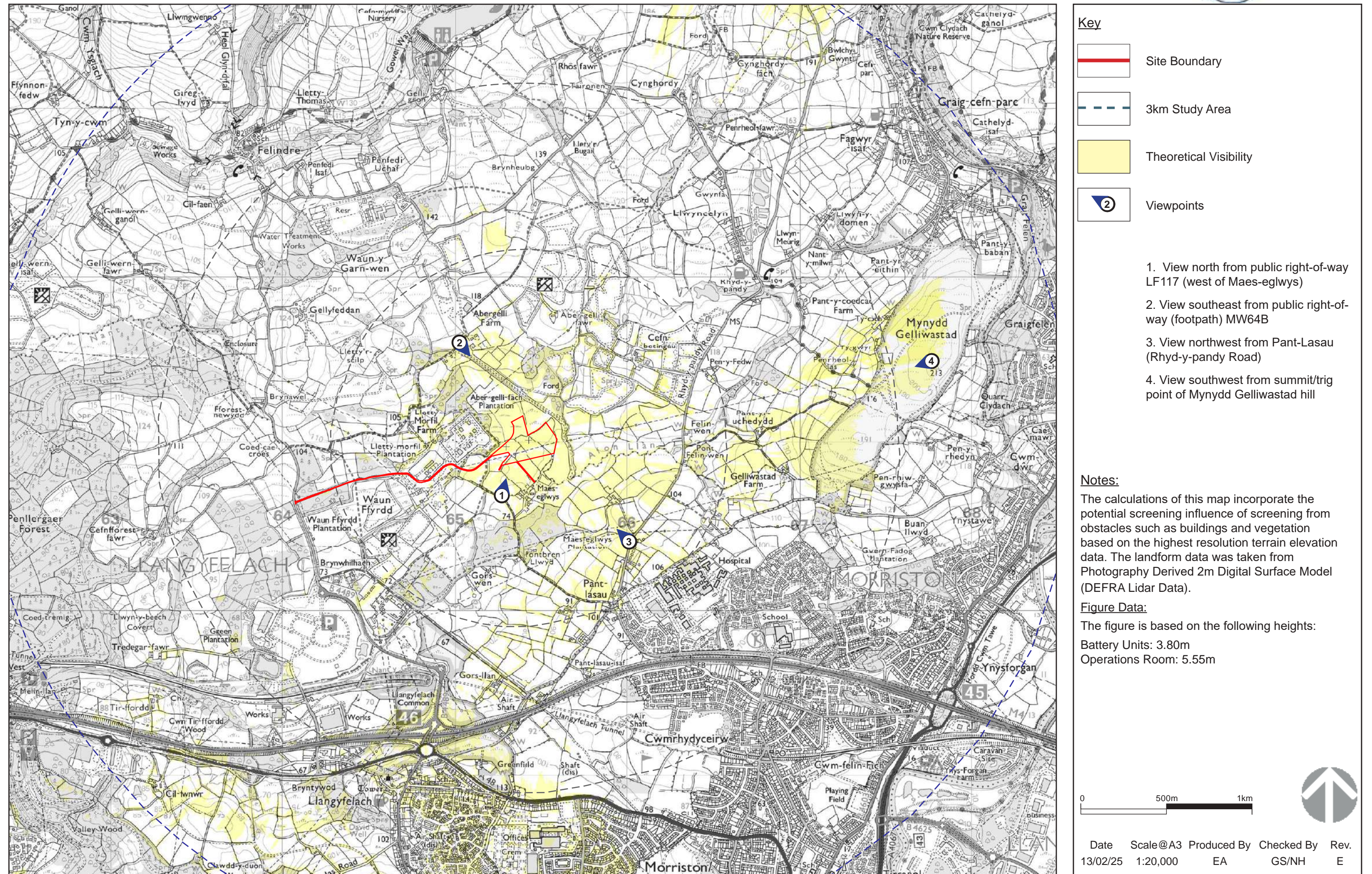
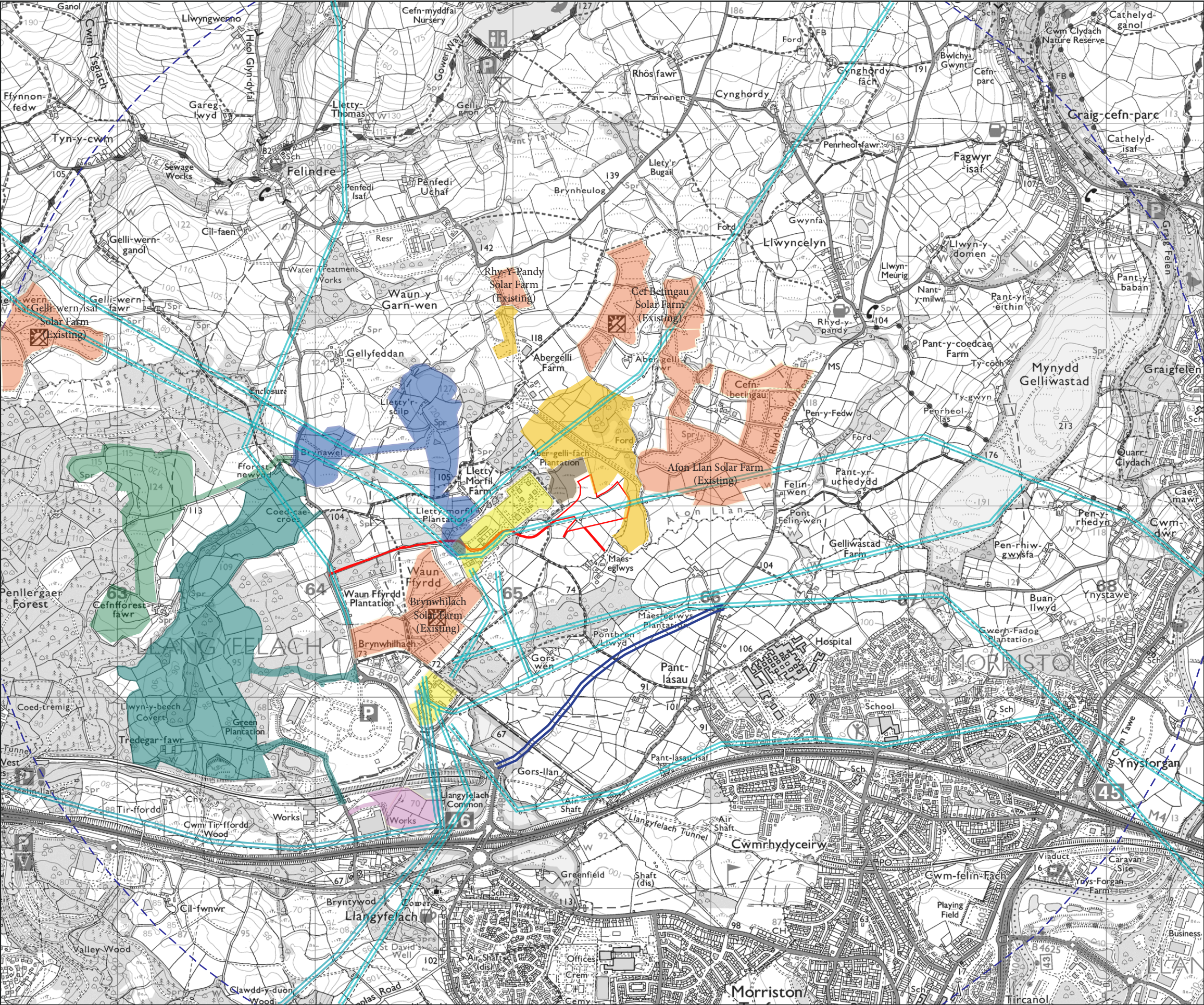


Figure 7 - Cumulative Development



- Key**
- Site Boundary
 - 3km Study Area
 - 400KV OHL
 - Existing Swansea North National Grid substation & Felindre National Grid Gas Compressing Station (Existing)
 - Morrison Hospital Heol Maes Eglwys, Access Road (2019/0822/SCR)(screening)
 - Swansea Greener Grid Park (GGP) (2023/0889/FUL) Consented (Under construction).
 - Felindre Urban Village, Mixed Use Development (2018/1618/OUT)(Planning)
 - Land off Bryntwyd BESS (2024/1634/ FUL) (Consented)
 - Innova 400 MW BESS and Substation Scoping 2024/1530/SCR (Planning)
 - Penllergaer Estate Solar Farm, Development of National Significance (DNS) (CAS-03127-J6W2K0) (PEDW Application)(Zone 1)
 - EDF 250MW BESS Screening 2024/2380/SCR
 - Ground Mounted Solar Projects and Associated Infrastructure

Date	Scale@A3	Produced By	Checked By	Rev.
13/02/25	1:20,000	EA	GS/NH	A