

PROJECT
RED JOHN PUMPED STORAGE HYDRO

CLIENT
ILI (Highlands PSH) Ltd.

- KEY**
- Development Site boundary
 - Excluded from Development Site boundary
 - Above and below ground infrastructure - Line
 - Above and below ground infrastructure - Area
- BGS Geology 50k**
- Fault, inferred, displacement unknown
 - Hillhead Sandstone Formation - Sandstone
 - Bochruben Formation - Breccia and Conglomerate
 - Craid A' Bhlaire Formation - Conglomerate
 - Inshes Flagstone Formation - Sandstone
 - Inverness Sandstone Group - Sandstone
 - Inverness Sandstone Group - Siltstone
 - Whitefield Formation - Sandstone
 - Arbriachan Intrusion - Granite
 - Achnacoran Striped Formation - Psammite and Semipelite
 - Creag Buidhe Semipelite Formation - Semipelite, Gneissose
 - Gairbeinn Pebbly Psammite Member - Psammite, Pebbly-Migmatitic
 - Ruthven Semipelite Formation - Semipelite, Gneissose

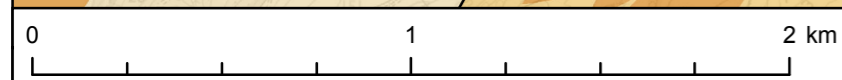
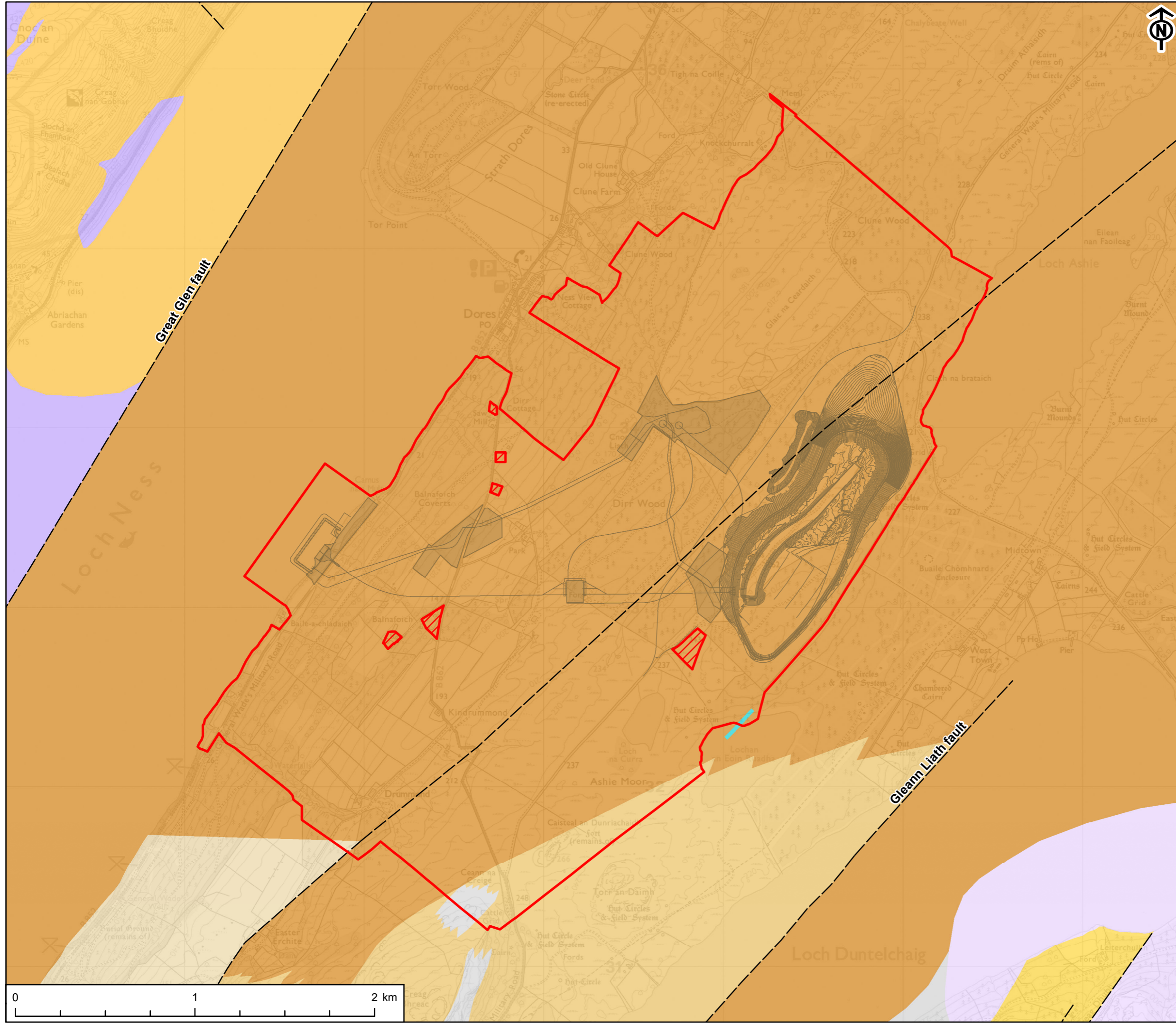
TITLE
FIGURE 5.2
BEDROCK GEOLOGY

REFERENCE
RJ_181031_EIA_5.2_v1

SHEET NUMBER 1 of 1
DATE 31/10/18

Project Management Initials: CA Designer: LC Checked: SY Approved: CA

Scale @ A3 1:20,000



This drawing has been produced for the use of AECOMs client. It may not be used, modified or relied upon by third parties, except as agreed by AECOM or as required by law. AECOM accepts no responsibility, and denies any liability whatsoever, to any party that uses or relies upon this drawing without AECOMs express written consent. All dimensions are indicative and in metres unless otherwise noted. Do not scale this document.

