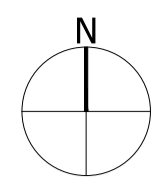


FIGURE 7.4
LANDSCAPE CHARACTER PLAN

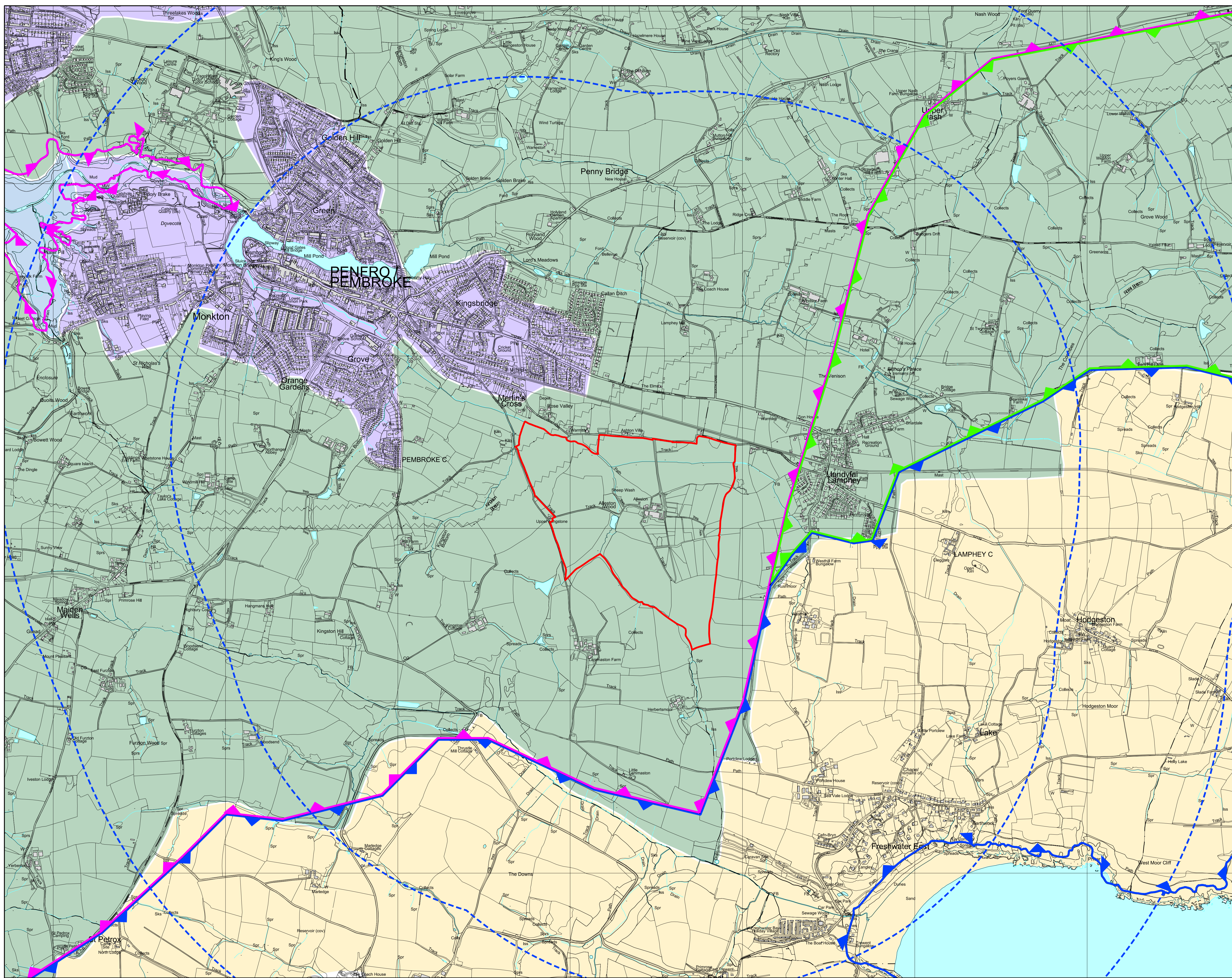


LEGEND

- Site Boundary
- Existing Water Courses and Features ^
- National Landscape Character Areas (NLCA) #
 - NLCA 44: Taf and Claddau Vales
 - NLCA 47: South Pembrokeshire Coast
 - NLCA 48: Milford Haven
- Pembrokeshire Landscape Character Areas ~~~
 - 16: Southern Haven Developed
 - 24: Southern Haven Mudflats
 - 25: Hundleton and Lamphey
- Pembrokeshire Coast National Park Landscape Character Areas ~~~
 - 4: Manorbier Freshwater East

Sources:
 ^ OS Mapping
 # Natural Resource Wales GIS Data Set
 ~~~ Pembrokeshire County Landscape Character Assessment, LDP Supplementary Planning Guidance Consultation Document, May 2022

Data collected for constraints and analysis mapping is based on publicly available sources at the time of preparation. Errors in the British National Grid and map itself may not be accurate. Stantec shall not be liable for the accuracy of data derived from external sources.



**FIGURE 7.4**

Project: Allestion Clean Energy

Drawing Title: Landscape Character Plan

|                       |                                     |              |              |
|-----------------------|-------------------------------------|--------------|--------------|
| Date: 03.10.2023      | Scale: 1:10,000 @A1<br>1:20,000 @A3 | Drawn by: GS | Check by: FS |
| Project No: 333100437 | Drawing No: LN-LP-03                | Revision: C  |              |

**Stantec**  
 Stantec UK Limited  
 7 Soho Square  
 London W1D 3QB  
 T: 020 7446 6888  
 stantec.com/uk