
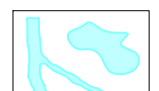
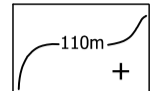







FIGURE 7.6
LANDMAP PLAN - LANDSCAPE HABITAT

LEGEND

-  Site Boundary
-  Existing Water Courses and Features ^
-  Contours/Spot Heights (Metres AOD) ^
- LANDMAP Landscape Habitats #**
-  PMBRKLH549: Pembroke River Pill, Pembroke
-  PMBRKLH586: Pembroke Mill Pond, Pembroke
-  PMBRKLH608: N. of Castlemartin, Pembroke **
-  PMBRKLH392: Between Pembroke and Tenby, Pembroke
-  PMBRKLH879: Pembroke, Pembroke

NOTE:
 ** Indicates the LANDMAP aspect areas that overlap to the Site boundary.
 Sources:
 # OS Mapping
 ^ Natural Resource Wales GIS Data Set

Data collated for constraints and analysis mapping is based on publicly available sources at the time of preparation inserted using the British National Grid and may not be accurate. Stantec shall not be liable for the accuracy of data derived from external sources.

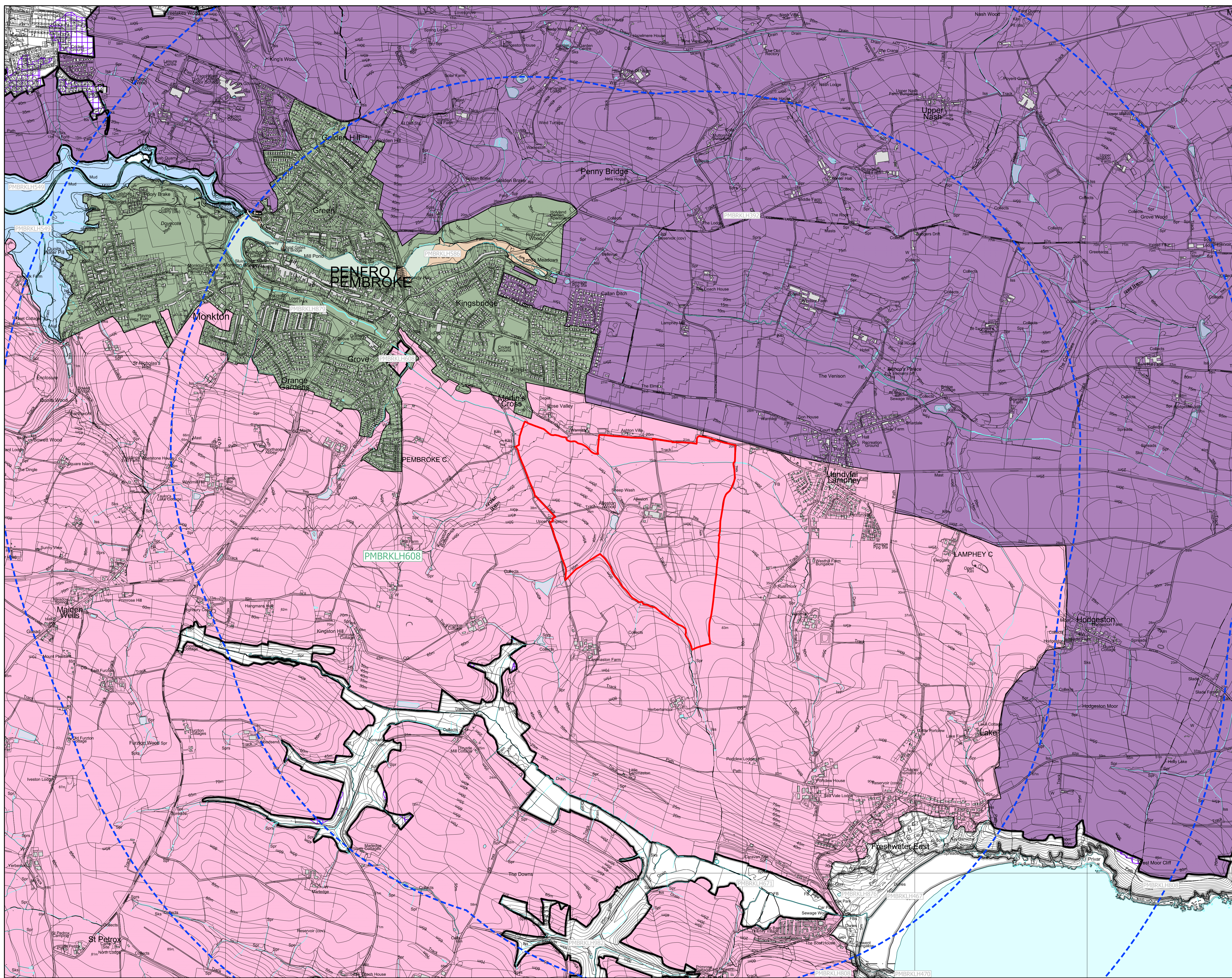


FIGURE 7.6

Project:
Alleston Clean Energy

Drawing Title:
LANDMAP: Landscape Habitats

Date	Scale	Drawn by	Check by
16.04.2024	1:10,000 @A1 1:20,000 @A3	GS/ML	CM
Project No	Drawing No	Revision	
333100437	LN-LP-07	D	



Stantec UK Limited
 7 Soho Square
 London W1D 3QB
 T: 020 7446 6888
 stantec.com/uk