



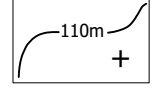
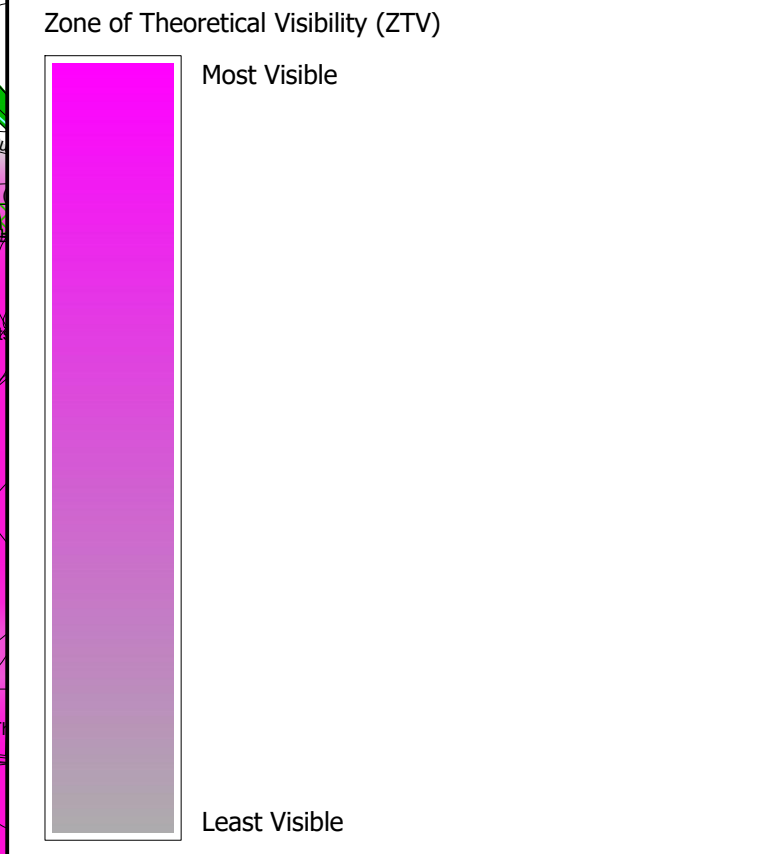
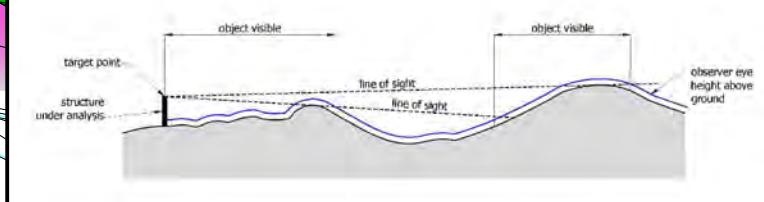


LEGEND

-  Site Boundary
-  Existing Woodlands, Copses and Tree Belts ^
-  Existing Scrub ^
-  Existing Water Courses and Features ^
-  Contours/Spot Heights (Metres AOD) ^



Notes:
 The Zone of Theoretical Visibility (ZTV) provides an approximate portrayal of the greatest possible extent of visibility of the Proposed Development, on the basis of a digital ground model (DTM). The extent and nature of specific views towards the Proposed Development is to be verified through fieldwork to take account of other visual barriers, such as existing buildings, woodland, trees and infrastructure.
 • The ZTV is produced using the specialised software package Key-Terra Firms which is an AutoCAD based application.
 • The ZTV is produced by calculating the line of sight* from target points to analysis end.



- Parameters:**
- The study area for the ZTV is 7.0 x 5.5 km;
 - The ZTV accounts for ground topography on the basis of a model made from Ordnance Survey Terrain 50 data in the form of 3D points data on a 50m grid;
 - The ZTV does not account for any other features, including infrastructure, woodland, trees and hedgerows, and existing built forms;
 - The ZTV is based on 117 targets on a regular grid across the site and following the boundary at 100m intervals, at a height of 3m above existing ground level;
 - The ZTV assumes an observer height of 1.7m above ground level; and
 - The ZTV portrays the extent of visibility of the Proposed Development on the basis of if a target point is visible within a given 50m grid square.

Sources:
 ^ OS Mapping
 Data collected for constraints and analysis mapping is based on publicly available sources at the time of preparation (retrieved using the British National Grid) and may itself not be accurate. Stantec shall not be liable for the accuracy of data derived from external sources.

FIGURE 7.5

Project:
Allestons Clean Energy

Drawing Title:
Zone of Theoretical Visibility (ZTV) Plan

Date	Scale	Drawn by	Check by
03.10.2023	1:10,000 @A1 1:20,000 @A3	GS	FS
Project No	Drawing No	Revision	
333100437	LN-LP-05	A	



Stantec UK Limited
 10th Floor
 Bank House
 8 Cherry Street
 Birmingham B2 5AL
 T: 0121 633 2900
 stantec.com/uk

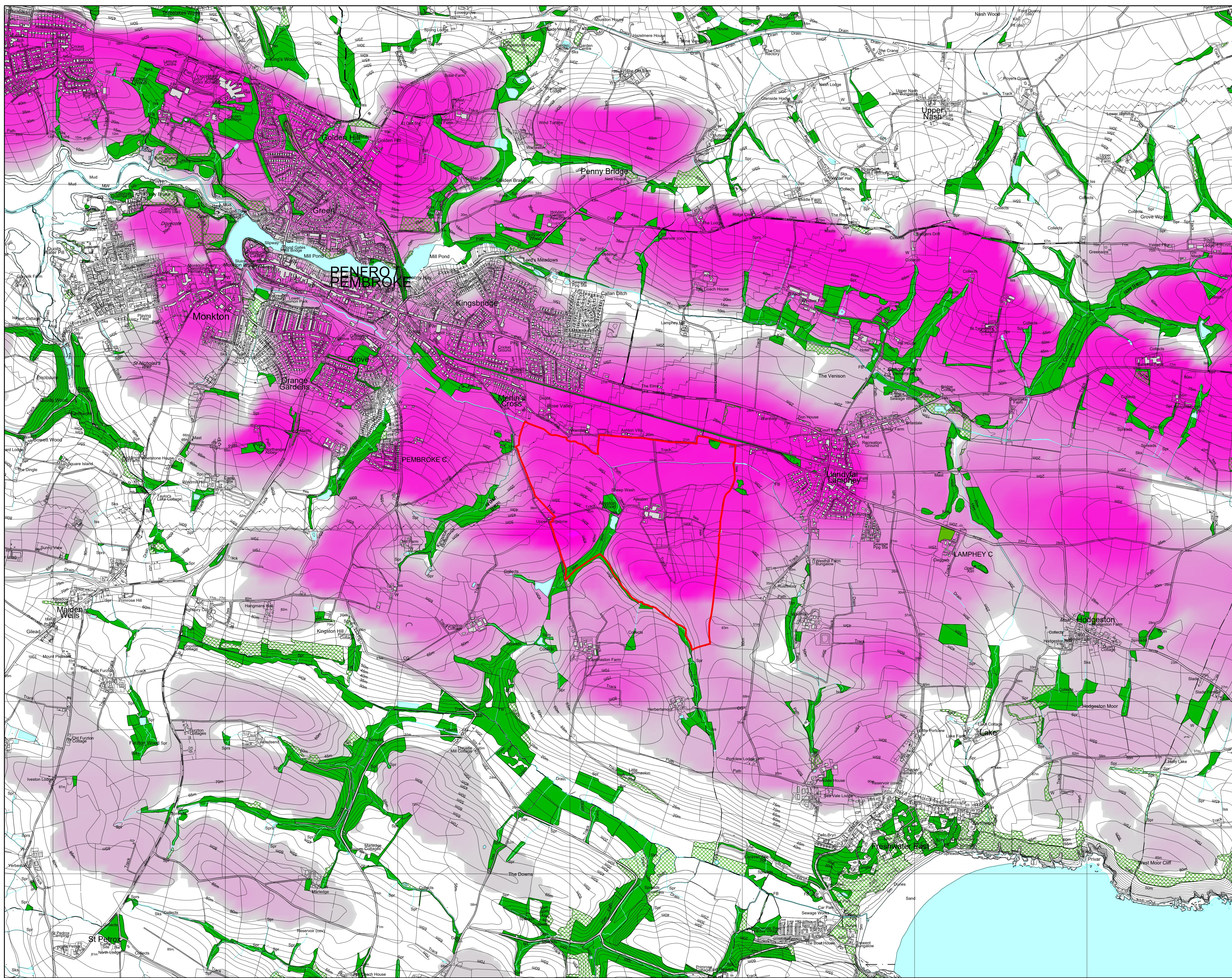


Figure 7.6: Geological Landscape Aspect Land Map