

DO NOT SCALE - IF IN DOUBT ASK



TREE CATEGORIES

Tree canopies are coloured in accordance with their quality category as set out in Table 1 of BS 5837:2012 'Trees in relation to design, demolition and construction - Recommendations' and shown in the Legend below. Category 'A' - Trees of high quality with an estimated remaining life expectancy of at least 40 years. Category 'B' - Trees of moderate quality with an estimated remaining life expectancy of at least 20 years. Category 'C' - Trees of low quality with an estimated remaining life expectancy of at least 10 years, or young trees with a stem diameter below 150mm. Category 'U' - Trees in such condition that they cannot realistically be retained as living trees in context of the current land use for longer than 10 years.

ROOT PROTECTION AREAS

This is a minimum area in m² which should be left undisturbed around each retained tree. The RPA is calculated using the British Standard BS 5837:2012 'Trees in relation to design, demolition and construction - Recommendations'.

Tree protection barriers should be positioned in accordance with the adjacent tree protection plan, be fit for the purpose of excluding construction activity, and appropriate to the degree and proximity of work taking place around the retained trees. It is essential that the barriers are installed prior to any construction taking place, be maintained during construction, and only removed once all construction has been completed and associated equipment and materials have been removed from site. It is recommended that the barrier configuration shown and described in the plan opposite should be used on this site. Inside the barriers it is also essential that the following prohibitions are complied with, unless an appropriate methodology has been formally agreed. (Where planning is required, formal agreement will be required from the Local Planning Authority):

No excavations, including by hand. No storage of machinery. No storage or handling of building materials, fuel, chemicals, or spoil. No fires. No vehicular access. No pedestrian access. No alteration, increase or decrease, to existing ground levels. No excavation or installation of services

ACCURACY OF TREE LOCATIONS

Tree locations based on topographical survey SDS 208175.02 VINING LODSWORTH WSW

ACCOMPANYING REPORT

Plan to be read in conjunction with Stantec Arboricultural Impact Assessment - Swalecliffe SSO which contains details of all trees surveyed and a description of recommended tree protection methods

REFERENCES

export_json2cad_1707142962 STANTEC BS5837 TREE SURVEY
 SKUIX-ALLES-000-PVL-102K (20240823) External PROPOSED LAYOUT
 Release Drawing

LEGEND

	Canopies of category A trees		Canopies of category B trees		Canopies of category C trees		Canopies of category U trees
	Root protection areas (RPAs)		Tree stems		T/G/H/W		Tree locations not based on topographical survey
	Tree to be removed		Tree to be removed		Tree protection fencing		

NOT FOR CONSTRUCTION

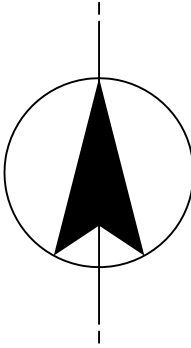
Revision	Status	Sanability Description	Author	Checked	Reviewed	Date
P04	Layout Updated		AA	CS		02/09/2024
P03	Layout updated		CS	MC		05/06/2024
P02	Layout updated		CS	AA		11/04/2024
P01	For information		AA	CS		06/02/2024



Location Code: SA71 4AA	OS Reference: SN 00463 00110	Security Reference:
Project Group: 333100437	Sub Process: 700	
Location/Town: Pembrock		
Site Name: Alleston		
Project Name: Alleston solar farm		
Drawing Title: TREE PROTECTION PLAN		
Scale: 1:1000	Sheet Size: A1	Status: P01
Drawing Number: 333100437.700-STN-VES-ZZ-DR-EN-002		Revision:

Sheet 01

200mm
150
100
50



DO NOT SCALE - IF IN DOUBT ASK



TREE CATEGORIES

Tree canopies are coloured in accordance with their quality category as set out in Table 1 of BS 5837:2012 'Trees in relation to design, demolition and construction - Recommendations' and shown in the Legend below. Category 'A' - Trees of high quality with an estimated remaining life expectancy of at least 40 years. Category 'B' - Trees of moderate quality with an estimated remaining life expectancy of at least 20 years. Category 'C' - Trees of low quality with an estimated remaining life expectancy of at least 10 years, or young trees with a stem diameter below 150mm. Category 'U' - Trees in such condition that they cannot realistically be retained as living trees in context of the current land use for longer than 10 years.

ROOT PROTECTION AREAS

This is a minimum area in m² which should be left undisturbed around each retained tree. The RPA is calculated using the British Standard BS 5837:2012 'Trees in relation to design, demolition and construction - Recommendations'.

Tree protection barriers should be positioned in accordance with the adjacent tree protection plan, be fit for the purpose of excluding construction activity, and appropriate to the degree and proximity of work taking place around the retained trees. It is essential that the barriers are installed prior to any construction taking place, be maintained during construction, and only removed once all construction has been completed and associated equipment and materials have been removed from site. It is recommended that the barrier configuration shown and described in the plan opposite should be used on this site. Inside the barriers it is also essential that the following prohibitions are complied with, unless an appropriate methodology has been formally agreed. (Where planning is required, formal agreement will be required from the Local Planning Authority):

No excavations, including by hand. No storage of machinery. No storage or handling of building materials, fuel, chemicals, or spoil. No fires. No vehicular access. No pedestrian access. No alteration, increase or decrease, to existing ground levels. No excavation or installation of services

ACCURACY OF TREE LOCATIONS

Tree locations based on topographical survey SDS 208175.02 VINING LODSWORTH WSW

ACCOMPANYING REPORT

Plan to be read in conjunction with Stantec Arboricultural Impact Assessment - Swalecliffe SSO which contains details of all trees surveyed and a description of recommended tree protection methods

REFERENCES

export_json2cad_1707142962 STANTEC BS5837 TREE SURVEY
 SKUKX-ALLES-000-PVL-102K (20240823) External PROPOSED LAYOUT
 Release Drawing

LEGEND

	Canopies of category A trees		Canopies of category B trees		Canopies of category C trees		Canopies of category U trees
	Root protection areas (RPAs)		Tree stems		T/G/H/W		Tree locations not based on topographical survey
	Tree to be removed		Tree (pinch/height) partially removed		Tree protection fencing		

NOT FOR CONSTRUCTION

P04	Layout Updated	AA	CS	02/09/2024	
P03	Layout updated	CS	MC	05/06/2024	
P02	Layout updated	CS	AA	11/04/2024	
P01	For information	AA	CS	06/02/2024	
Revision	Status	Author	Checked	Reviewed	Date

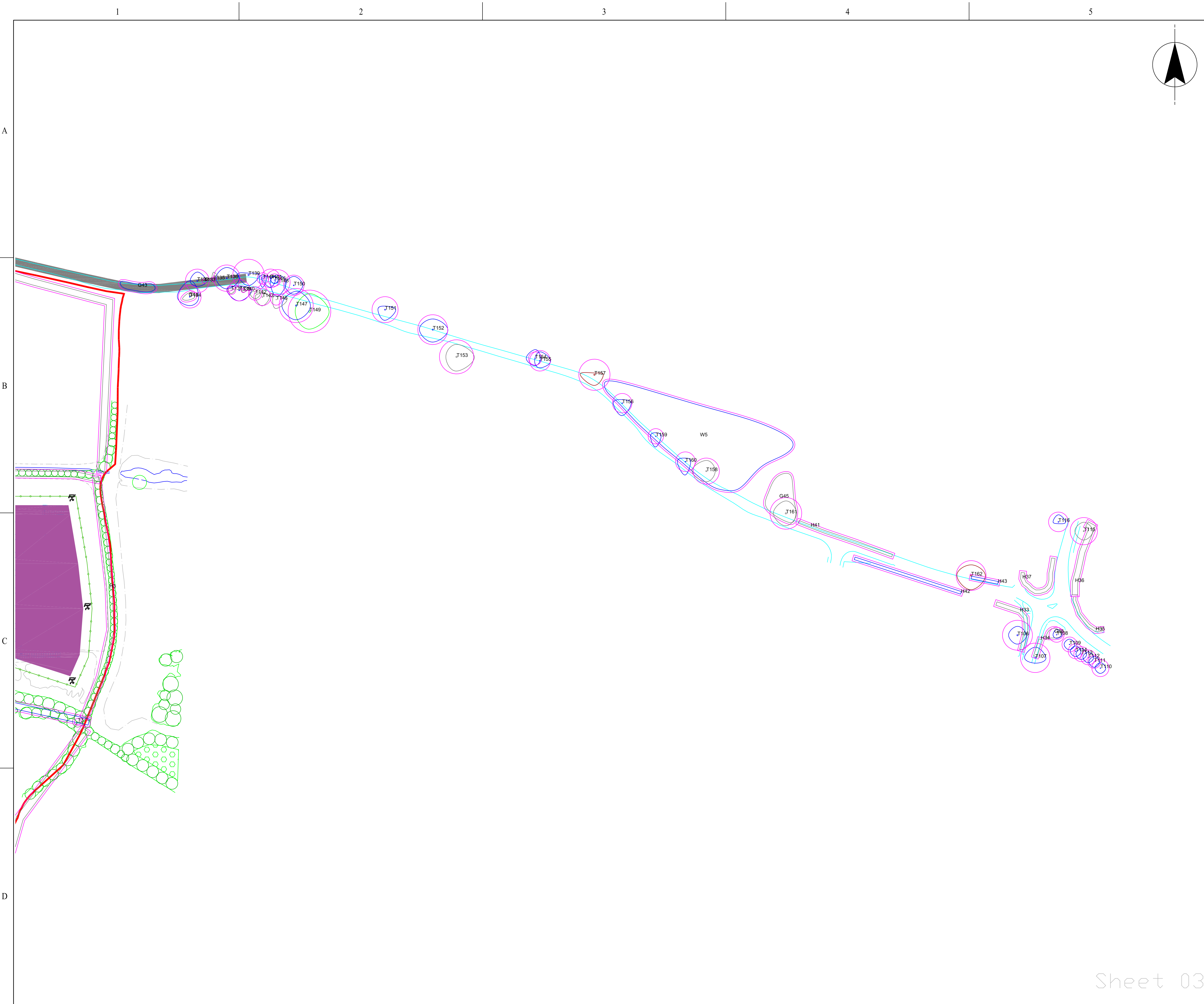


Location Code: SA71 4AA	OS Reference: SN 00463 00110	Security Reference:
Project Group: 333100437	Sub Process: 700	
Location/Town: Pembrock		
Site Name: Alleston		
Project Name: Alleston solar farm		
Drawing Title: TREE PROTECTION PLAN		
Scale: 1:1000	Sheet Size: A1	Status: P01
Drawing Number: 333100437.700-STN-VES-ZZ-DR-EN-002		Revision: P01



4

200mm
150
100
50



DO NOT SCALE - IF IN DOUBT ASK



TREE CATEGORIES
 Tree canopies are coloured in accordance with their quality category as set out in Table 1 of BS 5837:2012 'Trees in relation to design, demolition and construction - Recommendations' and shown in the Legend below. Category 'A' - Trees of high quality with an estimated remaining life expectancy of at least 40 years. Category 'B' - Trees of moderate quality with an estimated remaining life expectancy of at least 20 years. Category 'C' - Trees of low quality with an estimated remaining life expectancy of at least 10 years, or young trees with a stem diameter below 150mm. Category 'U' - Trees in such condition that they cannot realistically be retained as living trees in context of the current land use for longer than 10 years.

ROOT PROTECTION AREAS
 This is a minimum area in m² which should be left undisturbed around each retained tree. The RPA is calculated using the British Standard BS 5837:2012 'Trees in relation to design, demolition and construction - Recommendations'.

Tree protection barriers should be positioned in accordance with the adjacent tree protection plan, be fit for the purpose of excluding construction activity, and appropriate to the degree and proximity of work taking place around the retained trees. It is essential that the barriers are installed prior to any construction taking place, be maintained during construction, and only removed once all construction has been completed and associated equipment and materials have been removed from site. It is recommended that the barrier configuration shown and described in the plan opposite should be used on this site. Inside the barriers it is also essential that the following prohibitions are complied with, unless an appropriate methodology has been formally agreed. (Where planning is required, formal agreement will be required from the Local Planning Authority):

No excavations, including by hand. No storage of machinery. No storage or handling of building materials, fuel, chemicals, or spoil. No fires. No vehicular access. No pedestrian access. No alteration, increase or decrease, to existing ground levels. No excavation or installation of services

ACCURACY OF TREE LOCATIONS
 Tree locations based on topographical survey SDS 208175.02 VINING LODSWORTH WSW

ACCOMPANYING REPORT
 Plan to be read in conjunction with Stantec Arboricultural Impact Assessment - Swalecliffe SSO which contains details of all trees surveyed and a description of recommended tree protection methods

REFERENCES
 export_json2cad_1707142982 STANTEC BS5837 TREE SURVEY
 SKUKX-ALLES-000-PVL-102K (20240823) External PROPOSED LAYOUT
 Release Drawing

LEGEND

	Canopies of category A trees		Canopies of category B trees		Canopies of category C trees		Canopies of category U trees
	Root protection areas (RPAs)		Tree stems		T/G/H/W		Tree locations not based on topographical survey
	Tree to be removed		Tree (pinch/height) partially removed		Tree protection fencing		

NOT FOR CONSTRUCTION

Revision	Status	Sanability Description	Author	Checked	Reviewed	Date
P04	Layout Updated		AA	CS		02/09/2024
P03	Layout updated		CS	MC		05/06/2024
P02	Layout updated		CS	AA		11/04/2024
P01	For information		AA	CS		06/02/2024



Location Code: SA71 4AA	OS Reference: SN 00463 00110	Security Reference:
Project Group: 333100437	Sub Process: 700	
Location/Town: Pembrock		
Site Name: Alleston		
Project Name: Alleston solar farm		
Drawing Title: TREE PROTECTION PLAN		
Scale: 1:1000	Sheet Size: A1	Status:
Drawing Number: 333100437.700-STN-VES-ZZ-DR-EN-002	Revision: P01	

Sheet 03





Sheet 04

DO NOT SCALE - IF IN DOUBT ASK



TREE CATEGORIES

Tree canopies are coloured in accordance with their quality category as set out in Table 1 of BS 5837:2012 'Trees in relation to design, demolition and construction - Recommendations' and shown in the Legend below. Category 'A' - Trees of high quality with an estimated remaining life expectancy of at least 40 years. Category 'B' - Trees of moderate quality with an estimated remaining life expectancy of at least 20 years. Category 'C' - Trees of low quality with an estimated remaining life expectancy of at least 10 years, or young trees with a stem diameter below 150mm. Category 'U' - Trees in such condition that they cannot realistically be retained as living trees in context of the current land use for longer than 10 years.

ROOT PROTECTION AREAS

This is a minimum area in m² which should be left undisturbed around each retained tree. The RPA is calculated using the British Standard BS 5837:2012 'Trees in relation to design, demolition and construction - Recommendations'.

Tree protection barriers should be positioned in accordance with the adjacent tree protection plan, be fit for the purpose of excluding construction activity, and appropriate to the degree and proximity of work taking place around the retained trees. It is essential that the barriers are installed prior to any construction taking place, be maintained during construction, and only removed once all construction has been completed and associated equipment and materials have been removed from site. It is recommended that the barrier configuration shown and described in the plan opposite should be used on this site. Inside the barriers it is also essential that the following prohibitions are complied with, unless an appropriate methodology has been formally agreed. (Where planning is required, formal agreement will be required from the Local Planning Authority):

No excavations, including by hand. No storage of machinery. No storage or handling of building materials, fuel, chemicals, or spoil. No fires. No vehicular access. No pedestrian access. No alteration, increase or decrease, to existing ground levels. No excavation or installation of services

ACCURACY OF TREE LOCATIONS

Tree locations based on topographical survey SDS 208175.02 VINING LODSWORTH WSW

ACCOMPANYING REPORT

Plan to be read in conjunction with Stantec Arboricultural Impact Assessment - Swalecliffe SSO which contains details of all trees surveyed and a description of recommended tree protection methods

REFERENCES

export_json2cad_1707142962 STANTEC BS5837 TREE SURVEY
 SKUKX-ALLES-000-PVL-102K (20240823) External PROPOSED LAYOUT
 Release Drawing

LEGEND

	Canopies of category A trees		Canopies of category B trees		Canopies of category C trees		Canopies of category U trees
	Root protection areas (RPAs)		Tree stems		T/G/H/W		Tree locations not based on topographical survey
	Tree to be removed		Tree removal partially removed		Tree protection fencing		

NOT FOR CONSTRUCTION

Revision	Status	Sanability Description	Author	Checked	Reviewed	Date
P04	Layout Updated		AA	CS		02/09/2024
P03	Layout updated		CS	MC		05/06/2024
P02	Layout updated		CS	AA		11/04/2024
P01	For information		AA	CS		06/02/2024



Location Code: SA71 4AA	OS Reference: SN 00463 00110	Security Reference:
Project Group: 333100437	Sub Process: 700	
Location/Town: Pembrock		
Site Name: Alleston		
Project Name: Alleston solar farm		
Drawing Title: TREE PROTECTION PLAN		
Scale: 1:1000	Sheet Size: A1	Status:
Drawing Number: 333100437.700-STN-VES-ZZ-DR-EN-002		Revision: P01



DO NOT SCALE - IF IN DOUBT ASK



TREE CATEGORIES
 Tree canopies are coloured in accordance with their quality category as set out in Table 1 of BS 5837:2012 'Trees in relation to design, demolition and construction - Recommendations' and shown in the Legend below. Category 'A' - Trees of high quality with an estimated remaining life expectancy of at least 40 years. Category 'B' - Trees of moderate quality with an estimated remaining life expectancy of at least 20 years. Category 'C' - Trees of low quality with an estimated remaining life expectancy of at least 10 years, or young trees with a stem diameter below 150mm. Category 'U' - Trees in such condition that they cannot realistically be retained as living trees in context of the current land use for longer than 10 years.

ROOT PROTECTION AREAS
 This is a minimum area in m² which should be left undisturbed around each retained tree. The RPA is calculated using the British Standard BS 5837:2012 'Trees in relation to design, demolition and construction - Recommendations'.

Tree protection barriers should be positioned in accordance with the adjacent tree protection plan, be fit for the purpose of excluding construction activity, and appropriate to the degree and proximity of work taking place around the retained trees. It is essential that the barriers are installed prior to any construction taking place, be maintained during construction, and only removed once all construction has been completed and associated equipment and materials have been removed from site. It is recommended that the barrier configuration shown and described in the plan opposite should be used on this site. Inside the barriers it is also essential that the following prohibitions are complied with, unless an appropriate methodology has been formally agreed. (Where planning is required, formal agreement will be required from the Local Planning Authority):

No excavations, including by hand. No storage of machinery. No storage or handling of building materials, fuel, chemicals, or spoil. No fires. No vehicular access. No pedestrian access. No alteration, increase or decrease, to existing ground levels. No excavation or installation of services

ACCURACY OF TREE LOCATIONS
 Tree locations based on topographical survey SDS 208175.02 VINING LODSWORTH WSW

ACCOMPANYING REPORT
 Plan to be read in conjunction with Stantec Arboricultural Impact Assessment - Swalecliffe SSO which contains details of all trees surveyed and a description of recommended tree protection methods

REFERENCES
 export_json2cad_1707142962 STANTEC BS5837 TREE SURVEY
 SKUKX-ALLES-000-PVL-102K (20240823) External PROPOSED LAYOUT
 Release Drawing

LEGEND

	Canopies of category A trees		Canopies of category B trees		Canopies of category C trees		Canopies of category U trees
	Root protection areas (RPAs)		Tree stems		T/G/H/W		Tree locations not based on topographical survey
	Tree to be removed		Tree (partially removed)		Tree protection fencing		

NOT FOR CONSTRUCTION

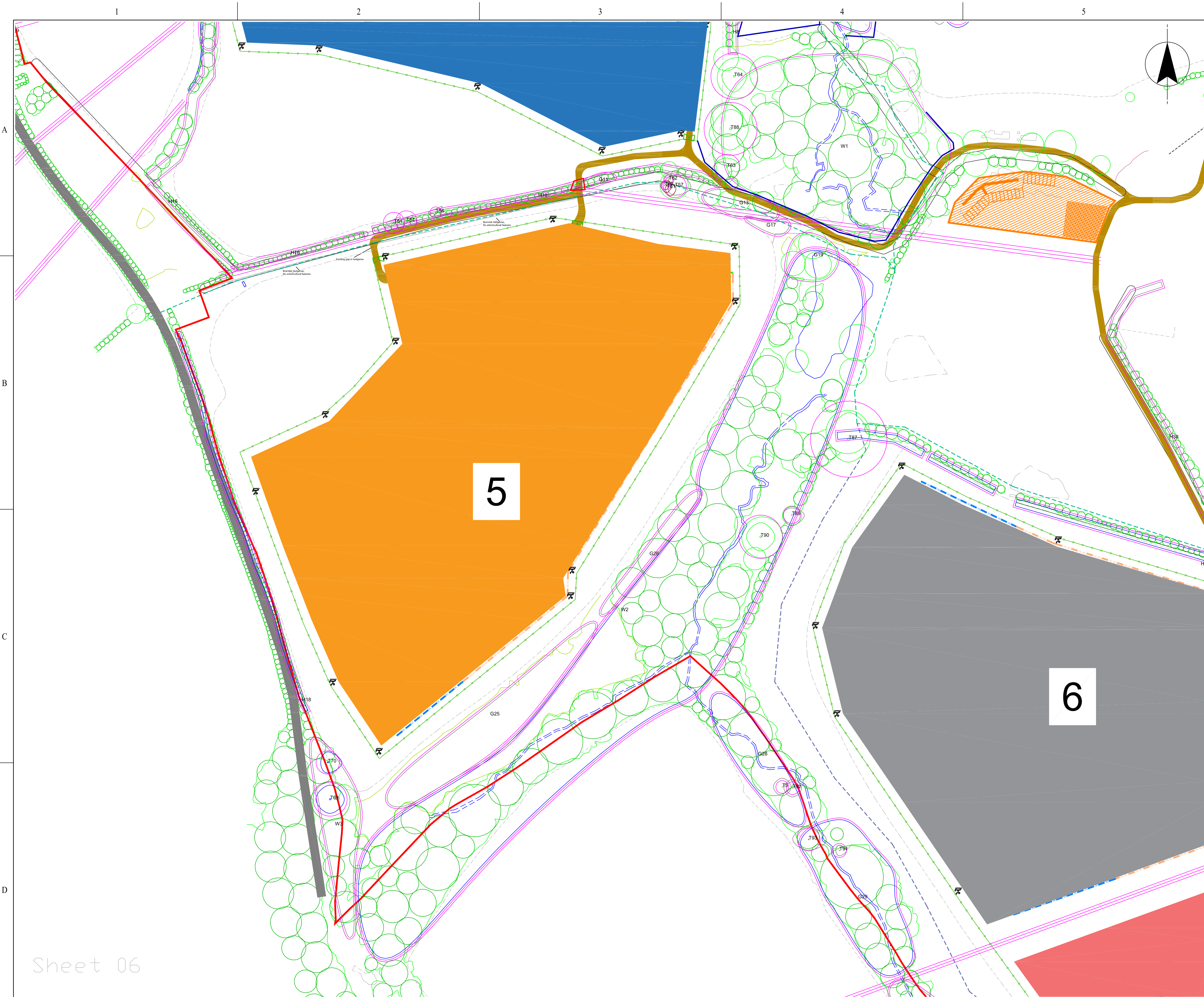
Revision	Status	Sanability Description	Author	Checked	Reviewed	Date
P04	Layout Updated		AA	CS		02/09/2024
P03	Layout updated		CS	MC		05/06/2024
P02	Layout updated		CS	AA		11/04/2024
P01	For information		AA	CS		06/02/2024



Location Code: SA71 4AA	OS Reference: SN 00463 00110	Security Reference:
Project Group: 333100437	Sub Process: 700	
Location/Town: Pembrock		
Site Name: Alleston		
Project Name: Alleston solar farm		
Drawing Title: TREE PROTECTION PLAN		
Scale: 1:1000	Sheet Size: A1	Status:
Drawing Number: 333100437.700-STN-VES-ZZ-DR-EN-002	Revision: P01	

Sheet 05

200mm
150
100
50



DO NOT SCALE - IF IN DOUBT ASK



TREE CATEGORIES

Tree canopies are coloured in accordance with their quality category as set out in Table 1 of BS 5837:2012 'Trees in relation to design, demolition and construction - Recommendations' and shown in the Legend below. Category 'A' - Trees of high quality with an estimated remaining life expectancy of at least 40 years. Category 'B' - Trees of moderate quality with an estimated remaining life expectancy of at least 20 years. Category 'C' - Trees of low quality with an estimated remaining life expectancy of at least 10 years, or young trees with a stem diameter below 150mm. Category 'U' - Trees in such condition that they cannot realistically be retained as living trees in context of the current land use for longer than 10 years.

ROOT PROTECTION AREAS

This is a minimum area in m² which should be left undisturbed around each retained tree. The RPA is calculated using the British Standard BS 5837:2012 'Trees in relation to design, demolition and construction - Recommendations'.

Tree protection barriers should be positioned in accordance with the adjacent tree protection plan, be fit for the purpose of excluding construction activity, and appropriate to the degree and proximity of work taking place around the retained trees. It is essential that the barriers are installed prior to any construction taking place, be maintained during construction, and only removed once all construction has been completed and associated equipment and materials have been removed from site. It is recommended that the barrier configuration shown and described in the plan opposite should be used on this site. Inside the barriers it is also essential that the following prohibitions are complied with, unless an appropriate methodology has been formally agreed. (Where planning is required, formal agreement will be required from the Local Planning Authority):

No excavations, including by hand. No storage of machinery. No storage or handling of building materials, fuel, chemicals, or spoil. No fires. No vehicular access. No pedestrian access. No alteration, increase or decrease, to existing ground levels. No excavation or installation of services

ACCURACY OF TREE LOCATIONS

Tree locations based on topographical survey SDS 208175.02 VINING LODSWORTH WSW

ACCOMPANYING REPORT

Plan to be read in conjunction with Stantec Arboricultural Impact Assessment - Swalecliffe SSO which contains details of all trees surveyed and a description of recommended tree protection methods

REFERENCES

export_json2cad_1707142962 STANTEC BS5837 TREE SURVEY
 SKUKX-ALLES-000-PVL-102K (20240823) External PROPOSED LAYOUT
 Release Drawing

LEGEND

	Canopies of category A trees		Canopies of category B trees		Canopies of category C trees		Canopies of category U trees
	Root protection areas (RPAs)		Tree stems		T/G/H/W		Tree locations not based on topographical survey
	Tree to be removed		Tree (imp/hedge) partially removed		Tree protection fencing		

NOT FOR CONSTRUCTION

Revision	Status	Sanability Description	Author	Checked	Reviewed	Date
P04	Layout Updated		AA	CS		02/09/2024
P03	Layout updated		CS	MC		05/06/2024
P02	Layout updated		CS	AA		11/04/2024
P01	For information		AA	CS		06/02/2024



Location Code: SA71 4AA	OS Reference: SN 00463 00110	Security Reference:
Project Group: 333100437	Sub Process: 700	
Location/Town: Pembrock		
Site Name: Alleston		
Project Name: Alleston solar farm		
Drawing Title: TREE PROTECTION PLAN		
Scale: 1:1000	Sheet Size: A1	Status:
Drawing Number: 333100437.700-STN-VEZ-ZZ-DR-EN-002	Revision: P01	

200mm
150
100
50