

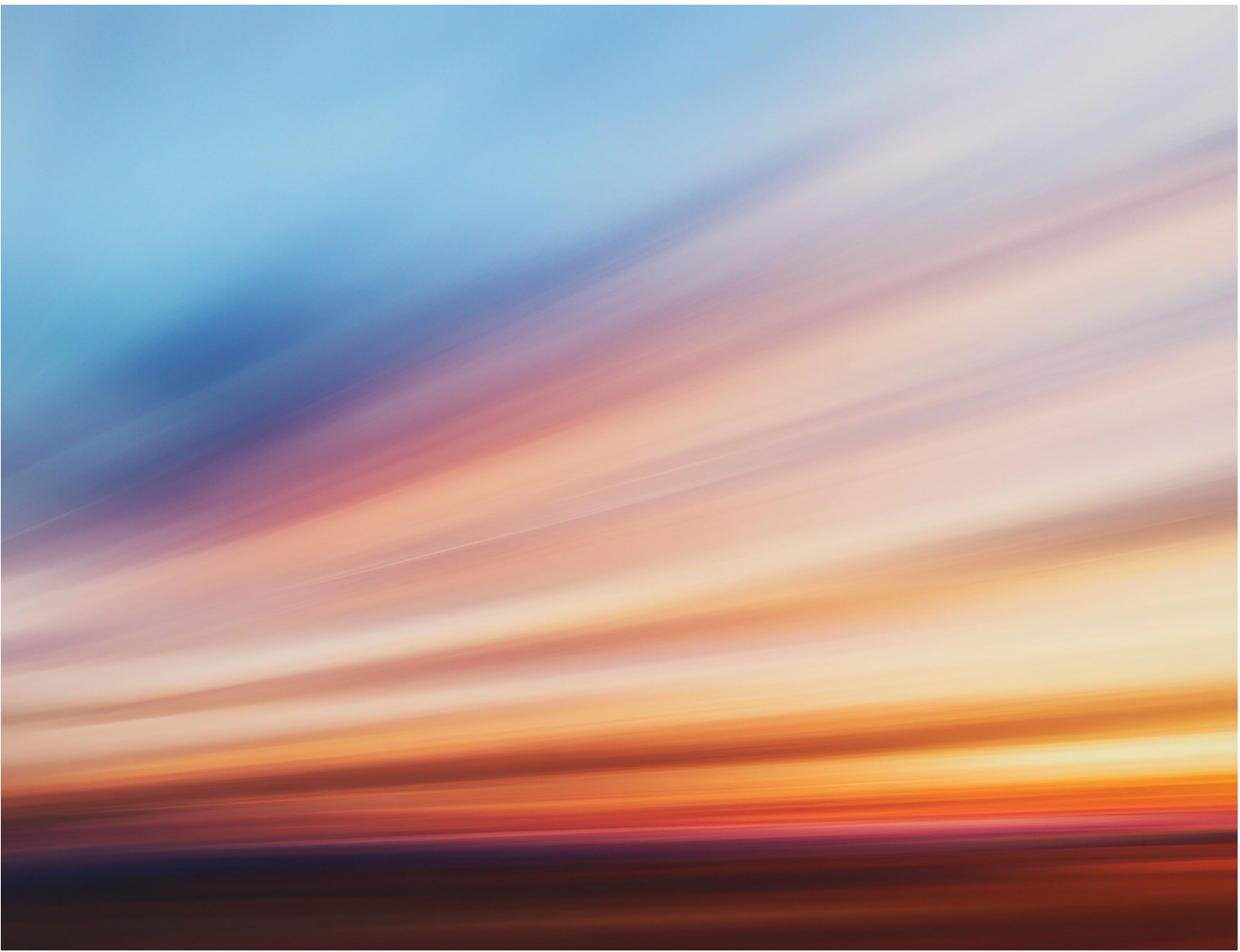
# **Mylen Leah Solar Farm**

## **Preliminary Environmental Information Report (PEIR)**

### **Volume 1**

### **Chapter 19: Cumulative Effects**

**April 2026**



## Contents

<b>19.</b>	Cumulative Effects .....	1
<b>19.1</b>	Introduction .....	1
<b>19.2</b>	What legislation, planning policy and guidance is relevant to cumulative effects? .....	1
<b>19.3</b>	What are the intra-project combined effects? .....	3
<b>19.4</b>	What are the inter-project cumulative effects? .....	7
<b>19.5</b>	What are the results of the preliminary inter-project cumulative assessment? 26	
<b>19.6</b>	What difficulties and uncertainties have been encountered in this preliminary cumulative effects assessment? .....	32
<b>19.7</b>	What further work is required to inform the full cumulative effects assessment in the DCO application? .....	32

## 19. Cumulative Effects

### 19.1 Introduction

19.1.1 This chapter presents a preliminary assessment of the likely cumulative effects during the construction, operation and decommissioning phases of Mylen Leah Solar Farm.

19.1.2 This chapter should be read in conjunction with the following figures in **Volume 2** and with the following appendices in **Volume 3**:

- **Figure 19.1: Shortlist of Other Existing and/or Approved Developments;** and
- **Appendix 19.1: Long List of Other Existing and/or Approved Developments.**

19.1.3 Cumulative effects occur as a result of several actions on an environmental receptor, which may overlap or act in combination. The following types of cumulative effects have been considered in accordance with the Environmental Impact Assessment (EIA) Regulations<sup>1</sup> and best practice guidance:

- **Intra-project combined effects** – the interaction and combination of different environmental residual (post-additional mitigation) effects from within Mylen Leah Solar Farm affecting a receptor; and
- **Inter-project cumulative effects** – the combined residual (post-additional mitigation) effects of Mylen Leah Solar Farm and other existing and/or approved developments on a single receptor/resource.

### 19.2 What legislation, planning policy and guidance is relevant to cumulative effects?

19.2.1 The general legislation and planning policy context for Mylen Leah Solar Farm is provided in **Section 1.4 of Chapter 1: Introducing Mylen Leah Solar Farm** in **Volume 1**. Legislation, planning policy and guidance relevant to this preliminary cumulative assessment, is detailed below.

#### Legislation

- Schedule 4 paragraph (5)(e) of the EIA Regulations states that the Environmental Statement (ES) should include “*a description of the likely significant effects of the development on the environment resulting from... the cumulation of effects with other existing and/or approved projects, taking into account any existing environmental problems relating to areas of particular environmental importance likely to be affected or the uses of natural resources*”.
- Regulation 5(2) of the EIA Regulations states that the Environmental Impact Assessment (EIA) must identify, describe and assess in an appropriate manner, in light of each individual case, the direct and indirect significant effects of the proposed development on population and human health, biodiversity, land, soil, water, air and climate, material assets, cultural heritage and the landscape.

- Regulation 5(2)(e) of the EIA Regulations also requires applicants to assess “*the interaction between those factors.*”

### **National planning policy**

- The Overarching National Policy Statement for Energy (EN-1) (December 2025, published January 2026)<sup>2</sup> provides the primary policy framework for decision-making on nationally significant energy infrastructure. Under Part 4 (Assessment Principles) and Part 5 (Generic Impacts), applicants must assess potential adverse impacts, including long-term, interactive, and cumulative effects, and identify measures to avoid, reduce, mitigate, or compensate for such impacts.
- National Policy Statement for Renewable Energy Infrastructure (NPS EN-3) (December 2025, published January 2026)<sup>3</sup> sets out the technology-specific policy for renewable electricity generation. Section 2.10 provides detailed policy for Solar Photovoltaic Generation. Requirements for assessing cumulative impacts now derive from the overarching assessment principles in NPS EN-1, which apply to all technologies, including solar photovoltaic (PV).
- National Policy Statement for Electricity Networks Infrastructure (NPS EN-5) (December 2025, published January 2026)<sup>4</sup> requires applicants to assess environmental, landscape and visual effects of electricity network infrastructure, including any cumulative effects, as part of the wider applicant assessment process set out in Section 2.9.
- National Planning Policy Framework (NPPF) (2024)<sup>5</sup> makes reference to ensuring adverse cumulative effects are addressed appropriately, particularly related to highways, landscape and visual, flood risk, ground conditions and pollution, air quality, human health and the historic environment.

### **Local planning policy**

- East Riding of Yorkshire Council (ERYC) Local Plan Update 2020-2039, specifically policies<sup>6</sup>:
  - ENV1: Integrating High Quality Design;
  - ENV2: Promoting a High Quality Landscape;
  - ENV3: Valuing our Heritage;
  - ENV5: Enhancing Biodiversity and Geodiversity;
  - ENV6: Managing Environmental Hazards;
  - EC5: Supporting the Renewable and Low Carbon Energy Sector; and
  - C1: Providing Infrastructure and Facilities.

### **Guidance**

- Nationally Significant Infrastructure Projects: Advice on Cumulative Effects Assessment (2024)<sup>7</sup>; and

- Institute of Environmental Management and Assessment: The State of Environmental Impact Assessment in the UK (2011)<sup>8</sup>.

**19.3 What are the intra-project combined effects?**

- 19.3.1 There is the potential for the interaction and combination of different environmental residual effects from within Mylen Leah Solar Farm to affect certain receptors discussed in the assessments for more than one environmental factor.
- 19.3.2 The approach to the preliminary assessment of interactions of environmental effects (intra-project combined effects) has considered the changes in baseline conditions at common sensitive receptors (i.e., those receptors that have been identified as experiencing likely significant effects by more than one environmental factor) due to Mylen Leah Solar Farm.
- 19.3.3 The preliminary assessment has been based upon residual (post-additional mitigation) effects that are of a greater significance than ‘slight’ or ‘minor’ only (‘negligible’ residual effects have not been considered). The preliminary assessment includes consideration of where multiple effects identified individually as not significant could combine to become significant. The study area for the preliminary assessment of intra-project combined effects has been informed by the study areas for the individual environmental factor assessments.
- 19.3.4 Preliminary consideration of the potential for intra-project combined effects between environmental factors has been undertaken to inform this PEIR and is reported in **Table 19.1** below.
- 19.3.5 A full assessment of the potential intra-project combined effects on environmental receptors will be undertaken and detailed within the ES. This will include a summary of the impact interactions and will set out how each of the environmental factor assessments have considered and assessed secondary effects arising as a result of the direct impacts from other environmental factors.

**Table 19.1: Preliminary assessment of intra-project combined effects**

Environmental factor	Potential intra-project combined effects
Air quality	Intra-project combined effects could include, for example, effects on human receptors arising from air quality (dust), visual, and noise impacts. However, at this stage it is not considered that there would be likely significant intra-project combined effects associated with this aspect of Mylen Leah Solar Farm.
Biodiversity	Intra-project combined effects could include from the construction, operation and decommissioning phases of Mylen Leah Solar Farm such as visual disturbance, dust, and noise and vibration, which, in combination, will increase the magnitude of effect (e.g., disturbance to breeding birds, wintering birds and foraging and commuting bats).

Environmental factor	Potential intra-project combined effects
	<p>Similarly, planting proposed to mitigate landscape and visual effects would have a combined effect with biodiversity enhancement proposals, as landscaping works would also increase biodiversity value of the Site and would be located in areas that will benefit existing habitats and designated sites through connectivity or buffering, and subsequently the species that these sites and habitats support.</p> <p>Therefore, there is potential that there could be significant intra-project combined effects associated with this aspect of Mylen Leah Solar Farm, which will be assessed further in the ES.</p>
Cultural heritage	<p>Intra-project combined effects could include impacts on listed buildings (for example, pollution or dust may impact on the historic fabric of listed buildings, and listed buildings may be residential properties where residents may be impacted by amenity) and scheduled monuments (where residents may be impacted by amenity). Such effects may also impact the ability to appreciate the heritage significance of the asset through changes to its setting or the contribution made to its significance by setting.</p> <p>However, at this stage, it is not considered that there would be likely significant intra-project combined effects associated with this aspect of Mylen Leah Solar Farm.</p>
Land and groundwater	<p>Intra-project combined effects could include the interaction and combination of residual effects identified in other environmental assessments presented in this PEIR to affect sensitive groundwater receptors. This could include, for example, effects on soil and impacts on water receptors.</p> <p>However, at this stage, it is not considered that there would be likely significant intra-project combined effects associated with this aspect of Mylen Leah Solar Farm.</p>
Landscape and visual	<p>Intra-project combined effects could include the interaction with landscape features identified within this preliminary assessment (e.g. existing trees and hedgerows), which may also have biodiversity value. The landscape provides ecosystem services beyond purely the aesthetic and when considering the significance of effects on landscape character any biodiversity or recreational value associated with the landscape has been taken into account.</p> <p>It is recognised that there is the potential for the interaction and combination of residual effects identified in other environmental assessments presented in this</p>

Environmental factor	Potential intra-project combined effects
	<p>PEIR to affect certain visual receptors. This could include, for example, effects on residential receptors and/or users of public rights of way arising from visual, noise and air quality (dust) impacts. There is potential for intra-project combined effects associated with the potential visual impacts to users of the Wilberforce Way long distance path.</p> <p>Therefore, there is potential that there could be significant intra-project combined effects associated with this aspect of Mylen Leah Solar Farm, which will be assessed further in the ES.</p>
<p>Noise and vibration</p>	<p>Intra-project combined effects could arise during the construction phase resulting from noise generation, increase in dust/air emissions and increased vehicle movements on the local road links.</p> <p>It is recognised that there could be potential for intra-project combined effects on ecological receptors within the underground grid connection corridor during construction and decommissioning.</p> <p>Therefore, there is potential that there could be significant intra-project combined effects associated with this aspect of Mylen Leah Solar Farm, which will be assessed further in the ES.</p>
<p>Population</p>	<p>Intra-project combined effects could include the amenity of residents, businesses and users of public rights of way, and human health to be impacted by noise, air quality, visual and traffic effects arising from the construction and operation of Mylen Leah Solar Farm.</p> <p>It is recognised that there is potential for intra-project combined effects associated with the potential significant visual impacts to users of the Wilberforce Way long distance path.</p> <p>Therefore, there is potential that there could be significant intra-project combined effects associated with this aspect of Mylen Leah Solar Farm, which will be assessed further in the ES.</p>
<p>Transport and access</p>	<p>Intra-project combined effects could include impacts on public rights of way.</p> <p>Conversely, the emissions from construction traffic are a source of effects for multiple receptors related to other environmental assessments, including air quality, noise and vibration and biodiversity.</p> <p>However, at this stage it is not considered that there would be likely significant intra-project combined effects associated with this aspect of Mylen Leah Solar Farm.</p>

Environmental factor	Potential intra-project combined effects
Water	<p>Intra-project combined effects could include impacts on water receptors due to mobilisation of soils during construction.</p> <p>However, at this stage it is not considered that there would be likely significant intra-project combined effects associated with this aspect of Mylen Leah Solar Farm.</p>
Glint and glare	<p>Intra-project combined effects could include visual impacts on residential properties.</p> <p>However, at this stage it is not considered that there would be likely significant intra-project combined effects associated with this aspect of Mylen Leah Solar Farm.</p>
Soil	<p>Intra-project combined effects could arise, for example, from the synergy between the soil assessment and the biodiversity and water assessments.</p> <p>It is recognised that there is the potential for the interaction and combination of residual effects identified in other environmental assessments presented in this PEIR to affect agricultural land quality.</p> <p>At this stage, it is not considered that there would be likely significant intra-project combined effects associated with this aspect of Mylen Leah Solar Farm.</p>

19.3.6 The full assessment of intra-project combined effects, to be presented in the ES, will be undertaken using a two-stage approach:

**Stage 1 – Screening**

19.3.7 Screening will be undertaken to determine whether a sensitive receptor is exposed to more than one type of residual (post-additional mitigation) effect during the construction, operational and/or decommissioning phases of Mylen Leah Solar Farm. Those common sensitive receptors exposed to two or more types of residual (post-additional mitigation) effects with significance of ‘**slight/minor**’ or greater, will be taken forward to Stage 2 of the assessment.

19.3.8 If there is only one type of effect on a sensitive receptor (i.e., only one environmental factor assessment has identified effects on that sensitive receptor), then it will be considered that there are no potential intra-project combined effects and the sensitive receptor will not be taken forward to Stage 2 of the assessment.

**Stage 2 – Assessment of intra-project combined effects**

19.3.9 A quantitative assessment of the overall significance of the intra-project combined effects on common sensitive receptors identified at Stage 1 will be undertaken, based on technical information provided in the environmental factor assessments and supporting appendices, as well as professional judgement. Given that the types of effects may be very different in some cases, a quantitative assessment may not be possible, and it may be

necessary to apply professional judgement in determining the significance of each individual effect.

19.3.10 The evaluation at the receptor level will consider:

- the magnitude of change at the common receptor;
- previously identified sensitivity/importance/value; and
- duration and reversibility of interaction.

19.3.11 The focus will be on determining a change in the level of effect likely to be experienced and whether this is significant or not.

#### **19.4 What are the inter-project cumulative effects?**

19.4.1 The ES will include an assessment of the potential effects of Mylen Leah Solar Farm in the context of other existing and/or approved development(s), as detailed below, to determine the cumulative effects that may result from Mylen Leah Solar Farm and the other existing and/or approved development(s) on the same receptor or environmental factor.

19.4.2 The approach to the assessment of inter-project cumulative effects will consider the deviation from the baseline conditions at common sensitive receptors as a result of changes brought about as a result of Mylen Leah Solar Farm in combination with one or more other existing and/or approved developments. The assessment of the inter-project cumulative effects will be based upon the residual (post-additional mitigation) effects that have been identified in the various environmental factor assessments for Mylen Leah Solar Farm, as well as available environmental information for the other existing and/or approved developments.

19.4.3 In accordance with the Planning Inspectorate's Nationally Significant Infrastructure Projects: Advice on Cumulative Effects Assessment<sup>9</sup>, the assessment of other existing and/or approved developments comprises four clear stages, as follows:

- **Stage 1:** establish a long list of other existing and/or approved developments based on appropriate spatial and temporal limits.
- **Stage 2:** apply a clear rationale to establish a shortlist of other existing and/or approved developments which, in combination with Mylen Leah Solar Farm, have the potential to result in a significant cumulative effect for inclusion within the assessment.
- **Stage 3:** gather information on each of the other existing and, or approved developments shortlisted at Stage 2.
- **Stage 4:** assess the cumulative effects of Mylen Leah Solar Farm with the other existing and, or approved development identified in Stages 1 to 3.

19.4.4 For the purposes of this preliminary assessment, Stages 1 and 2 have been completed in order to identify a preliminary shortlist of other existing and/or approved developments to inform a high-level overview of potential inter-project cumulative effects.

**Stage 1: Long list methodology**

- 19.4.5 In accordance with the Planning Inspectorate’s Advice on Cumulative Effects Assessment, the first task in establishing the long list of relevant other existing and/or approved development(s) is to determine the ‘search area’. For the purposes of this assessment, the ‘search area’ has been determined by affording consideration to the Zone of Influence (Zol) for each environmental factor assessed within this PEIR.
- 19.4.6 The Zol for each environmental factor is defined as the spatial area over which an effect is likely to be experienced. The Zol for each environmental factor has been identified based on the extent of the likely effects as identified as the study area in each of the individual environmental factor assessments (**Chapters 6 to 17 in Volume 1**), whilst also reflecting any additional area over which cumulative effects may occur for particular cumulative scenarios (e.g., sequential cumulative visual effects on users of linear routes).
- 19.4.7 The environmental factor-specific study areas presented in **Chapters 6 to 17 in Volume 1**, and appropriate justifications for these study areas, are provided below in **Table 19.2**.
- 19.4.8 It is worth noting that the potential impact of climate change is an inherent cumulative effect of all human actions (including development) and is therefore not considered further in this assessment as this has already been undertaken in greater depth in **Chapter 8: Climate in Volume 1**. GHG emissions are a unique type of impact that demands consideration in a different manner to the other types of impact. GHG emissions are inherently cumulative; no specific impact location or magnitude can be attributed to a particular emission and all emissions have the same impact on the same ultimate receptor. The impact is climate change, or global warming, caused by the radiative forcing effects of GHGs in the atmosphere. The affected receptor is the global climate and all the ecosystems and biomes that depend on it.
- 19.4.9 Emissions from nearby and associated developments will have a cumulative effect with those from any GHG-emitting activity both nationally, and indeed globally. Therefore, aligned with IEMA guidance<sup>10</sup>, it is not appropriate to consider the effects of GHG emissions from specific other existing and/or approved developments in the nearby area, as there is no basis for selecting any particular development over any other.

**Table 19.2: Zone of influence for each environmental factor**

Environmental factor	Study area	Justification
Air quality	250m from the draft Order Limits 50m for trackout activities	Based on the Institute of Air Quality Management (IAQM) Guidance of the Assessment of Dust from Demolition and Construction v2.2 <sup>11</sup> , the study area for sensitive human receptors for demolition (during the

Environmental factor	Study area	Justification
		decommissioning phase only), earthworks and general construction activities is up to 250m from the draft Order Limits. For trackout activities, which are defined as the transport of dust and dirt from the construction/demolition sites onto public road network, the study area for sensitive human receptors is up to 50m from the edge of the roads likely to be affected by trackout.
Biodiversity	<p>10km from the draft Order Limits for international/European statutory designated sites.</p> <p>5km from the draft Order Limits for national statutory designated sites.</p> <p>1km from the draft Order Limits for non-statutory designated sites.</p> <p>The draft Order Limits for habitats of principal importance and irreplaceable habitats (including ancient woodland, veteran and ancient trees and important hedgerows).</p> <p>The draft Order Limits for notable plants and plant communities; invertebrates; and fish.</p>	<p>Background data searches for statutory and non-statutory designated sites and protected species records focus on the draft Order Limits, extended to 5km for national statutory designated sites, and 10km for International/European statutory designated sites.</p> <p>The Humber Estuary Special Protection Area and Ramsar site (beyond 10km from the draft Order Limits) has also been included at the request of Natural England.</p>
Cultural heritage	2km from the draft Order Limits	<p>A 2km buffer surrounding the draft Order Limits, within which the archaeological and historical development of the Site and surrounding area has been considered.</p> <p>This study area encompasses designated and non-designated</p>

Environmental factor	Study area	Justification
		heritage assets. This was agreed as an appropriate dataset for assessment by the Historic Environment Record Officer and the Development Management Archaeologist for ERYC.
Land and groundwater	1km from the draft Order Limits for groundwater 250m from the draft Order Limits for land	A 1km buffer has been considered with regard to identifying groundwater related receptors and 250m for land related receptors that could be impacted by the construction, operation and/or decommissioning of Mylen Leah Solar Farm.
Landscape and visual	5km from the draft Order Limits	The ZTVs presented in <b>Figures 11.2 and 11.3</b> in <b>Volume 2</b> demonstrate that any visibility of Mylen Leah Solar Farm could potentially extend beyond 3km from the Site. In theory, sequential cumulative visual effects on users of linear routes (e.g. roads or long distance recreational footpaths) could be influenced by developments beyond the Study area of Mylen Leah Solar Farm itself. In order to consider this scenario, the Study area for the cumulative assessment is set at 5km from the draft Order Limits. It is considered that sequential cumulative visual effects on users of linear routes at greater distances would be no greater than negligible due to the considerable separation distances.
Noise and vibration	The study area for the assessment of environmental noise is	The assessment of noise on human receptors attributable to the

Environmental factor	Study area	Justification
	<p>defined through the identification of the closest Noise Sensitive Receptors to the development.</p> <p>Noise levels are calculated at 49 Noise Assessment Locations which have been selected to represent the closest residential Noise Sensitive Receptors to Mylen Leah Solar Farm.</p> <p>For clusters of residential Noise Sensitive Receptors, a single representative Noise Assessment Location has been defined, which is located on the most exposed side of the closest receptor to the draft Order Limits.</p>	<p>construction, decommissioning and operation of Mylen Leah Solar Farm considers the nearest and most sensitive Noise Sensitive Receptors only, on the assumption that if sound levels at these receptors are within the defined limits, then sound levels at Noise Sensitive Receptors at greater distances and/or sensitivities should also be within acceptable levels. In this case, the most sensitive receptors are residential properties.</p> <p>The influence of cumulative traffic flows during the construction phase will consider the same study area as defined in the traffic and transport assessment.</p>
Population	<p><b>Agricultural Land Holdings</b></p> <p>The draft Order Limits</p> <p><b>Business and employment land, and users of recreational routes</b></p> <p>The draft Order Limits plus a 500m radius</p>	<p>The likely significant effects to agricultural land holdings are limited to where Mylen Leah Solar Farm will limit or cease agricultural operations; therefore, the study area is confined to the draft Order Limits.</p> <p>The assessment of potential effects on users of recreational routes, and businesses and employment land is limited to the location where users are likely to experience effects to the use of a receptor, therefore the study area is confined to the draft Order Limits plus a 500m radius.</p>

Environmental factor	Study area	Justification
	<p><b>Tourism</b> The draft Order Limits plus a 3km radius</p>	<p>The assessment of likely significant effects on tourism is focused on impacts to visitors' experience as a result of noise impacts, visual change and increased traffic.</p> <p>As detailed in <b>Chapter 11: Landscape and Visual</b> in <b>Volume 1</b>, it is considered unlikely that there would be anything other than negligible, distant and filtered glimpses of the solar PV modules and substation/switchgear beyond 3km.</p> <p>As such, a 3km study area has been selected, as it represents the largest study area of which noise, traffic and visual impacts are assessed.</p>
	<p><b>Employment, gross value added, agricultural economy and occupancy rates</b> East Riding of Yorkshire administrative boundaries</p>	<p>The assessment of employment (i.e., job creation through Mylen Leah Solar Farm and the potential loss of agricultural jobs), associated agricultural economy, occupancy rates and gross value added in relation to Mylen Leah Solar Farm focuses on the effects within the East Riding of Yorkshire administrative boundaries.</p> <p>The assessment of occupancy rates as a result of the increase in workforce staff during construction and decommissioning will be based on the availability of accommodation options within local settlements of East Riding of Yorkshire.</p>

Environmental factor	Study area	Justification
Transport and access	<p>Extent of the local road network including:</p> <ul style="list-style-type: none"> <li>– A19 between Selby and Escrick;</li> <li>– A163 between the A19 and Foggathorpe;</li> <li>– B1228 between Highfield and Melbourne Road;</li> <li>– Ash Lane/Seaton Common Lane between the B1228 and Seaton Ross;</li> <li>– Melbourne Road between Seaton Ross and the A1079;</li> <li>– A1079 between Barmby Moor and Hayton; and</li> <li>– Main Road, Laytham.</li> </ul>	<p>Extent of the local road network affected by the construction phase, as well as any identified sensitive receptors, within that study area. This study area has been identified based upon the access routes for materials and staff movements.</p>
Water	1km from the draft Order Limits	<p>In absence of specific guidance for water receptors, professional judgement has been informed by the Design Manual for Roads and Bridges 'LA 113: Road Drainage and the Water Environment'<sup>12</sup> to define a 1km study area for water environment assessments and receptors that could be impacted by the construction, operation, and/or decommissioning of Mylen Leah Solar Farm. It is considered that this buffer is a sufficient distance to enable the deposition of silts in overland flows and dilution of any concentrated pollutants, so that waterbodies at a greater distance than the buffer would not be at significant risk of being affected.</p>

Environmental factor	Study area	Justification
Glint and glare	<p>20km from the solar PV module areas for midsized aviation receptors, including licensed airports and their air traffic control towers.</p> <p>10km from the solar PV module areas for small aviation receptors, including unlicensed airports and aerodromes, airfields and airstrips.</p> <p>1km from the solar PV module areas for ground-based receptors, including roads, buildings, PRow and bridleways. This study area is smaller than the above due to the reduced visibility on the ground (solar reflections shielding by obstructions).</p>	<p>There is little formal guidance with regard to the maximum distance at which glint and glare should be assessed. However, based on industry best practice and professional judgement, the study areas are considered appropriate for the construction, operation and decommissioning phases of Mylen Leah Solar Farm.</p>
Soil	The draft Order Limits	<p>Soil is highly localised and can dramatically change over a small area therefore it is not considered necessary or appropriate to extend the study area beyond the draft Order Limits.</p>

19.4.10 The overall combined ‘search area’ for the long list of relevant other existing and/or approved development(s) has been based on the largest, appropriate Zol (study area) in terms of distance, which in this case is 10km from the draft Order Limits for international/European statutory designated sites in relation to Biodiversity.

19.4.11 However, for some factors/elements in **Table 19.2** above, the Zol is greater than 10km. This is the case for transport and glint and glare and population (occupancy rates). Since the Zols for these factors/elements only apply to specific receptors (e.g. 20km from the solar PV module areas but only for midsized aviation receptors, including licensed airports and their air traffic control towers for glint and glare), it is not considered proportionate to base **Appendix 19.1: Long List of Other Existing and/or Approved Developments** in **Volume 3** on these wider Zol.

19.4.12 Following the adoption of the 10km Zol, a planning application search was undertaken to identify other existing and/or approved developments within

the 10km ZoI, using the planning portals of East Riding of Yorkshire Council, City of York Council, North Yorkshire Council and the Planning Inspectorate.

19.4.13 The central National Grid Reference point of other existing and/or approved developments has been used to determine their location, in the absence of an application boundary in Geographic Information Systems (GIS) format.

19.4.14 Only the following types of other existing and/or approved developments have been considered for inclusion on the long list, as the Applicant considers that any development that does not fall within these types would not likely give rise to a significant inter-project cumulative effect<sup>1</sup>:

- Employment developments;
- Residential developments of 10+ dwellings;
- Minerals and waste applications;
- Industrial developments;
- Nationally Significant Infrastructure Project (NSIP) developments<sup>2</sup>;
- Transport infrastructure developments (trunk roads or motorways only); and
- Energy infrastructure developments.

19.4.15 Of the development types listed above, only those that meet one or more of the following criteria have been included on the long list (in accordance with the 'Tier 1' and 'Tier 2' descriptions in the Planning Inspectorate's Advice on Cumulative Effects Assessment):

- Projects that are under construction but that will not be completed prior to Mylen Leah Solar Farm commencing<sup>3</sup>;
- Projects with planning permission within the last five years<sup>4</sup> (whether under the Planning Act 2008<sup>13</sup> or other regimes), but not yet implemented;
- Submitted applications (whether under the Planning Act 2008<sup>13</sup> or other regimes), but not yet determined, and all refusals subject to appeal procedures not yet determined; and

---

<sup>1</sup> Based on professional judgement with reference to EIA screening thresholds and reference to definitions of major development.

<sup>2</sup> As defined by the Planning Act 2008

<sup>3</sup> In accordance with the Planning Inspectorate's Advice on Cumulative Effects Assessment, other projects that are expected to be completed before construction of Mylen Leah Solar Farm, and the effects of those projects have been fully determined within their respective applications, are considered as part of the baseline.

<sup>4</sup> A five-year period is considered a reasonable time period to capture all other existing and/or approved developments that still have the potential to be built. Standard planning permission conditions typically state that development must be begun no later than the expiration of three years from the date of permission. Developments with planning permission older than five years will likely have been built or will not likely be built at all.

- Projects on the Planning Inspectorate's Programme of Projects where an EIA Scoping Report has been submitted, but for which an application has not yet been submitted.

19.4.16 In accordance with the Planning Inspectorate's Advice on Cumulative Effects Assessment, Tier 1 is defined as an other existing and, or approved development that is:

- under construction.
- permitted applications under the Planning Act or other regimes but not yet implemented.
- submitted applications under the Planning Act or other regimes but not yet determined.
- all refusals subject to appeal procedures not yet determined.

19.4.17 Tier 2 is defined as:

- projects on the Planning Inspectorate's programme of projects.

19.4.18 The Applicant's interpretation of the last bullet point above is that this solely relates to NSIPs. However, the Applicant has chosen to widen this particular criterion to include projects screened as EIA development under other regimes where an EIA Scoping Report has been submitted, but for which an application has not yet been submitted.

19.4.19 It should be noted that with reference to 'Tier 3' descriptions in the Planning Inspectorate's Advice on Cumulative Effects Assessment, the following other existing and/or approved development(s) have not been considered for inclusion in the long list. None of the below will have sufficient environmental assessment information freely and publicly available to inform the inter-project cumulative effects assessment, nor a high level qualitative assessment. The Applicant therefore does not consider the below to be 'existing and/or approved development':

- Projects on the Planning Inspectorate's Programme of Projects where an EIA Scoping Report has not been submitted;
- Projects that have been identified in the relevant Development Plan(s) (and emerging Development Plans); and
- Projects identified in other plans and programmes (as appropriate) which set the framework for future development consents/approvals, where such development is reasonably likely to come forward.

19.4.20 The long list of other existing and/or approved developments is provided in **Appendix 19.1: Long List of Other Existing and/or Approved Developments** in **Volume 3** and follows the Matrix set out in Annex 1 of the Planning Inspectorate's Advice on Cumulative Effects Assessment. This long list (and shortlist) is accurate as of 6 March 2026 and has been kept under review by the Applicant's planning team to allow for a robust assessment of inter-project cumulative effects. **Appendix 19.1: Long List of Other Existing and/or Approved Developments** in **Volume 3** and shortlist will remain under review using the sources outlined within this chapter to include any new other existing and/or approved development brought forward. In

some cases, other existing and/or approved developments that were previously 'Tier 3' may be recategorised as 'Tier 1' or 'Tier 2' and taken forward for further assessment.

### **Stage 2: Shortlist methodology**

19.4.21 Following the formation of the long list, the eligible other existing and/or approved developments identified have been through further assessment (Stage 2) to establish a shortlist of other existing and/or approved developments which, in combination with Mylen Leah Solar Farm, have the potential to result in significant inter-project cumulative effects.

19.4.22 The criteria used to determine whether to include or exclude an existing and/or approved development on the shortlist reflects the process established by the Planning Inspectorate's Advice on Cumulative Effects Assessment and has regard to relevant policy and guidance documents and consultation with the relevant statutory consultation bodies (particularly ERYC). The Planning Inspectorate's Advice on Cumulative Effects Assessment states that the criteria should address the following:

- **Temporal scope:** The relative construction, operation and decommissioning programmes of the other existing and/or approved developments identified in the Zol together with Mylen Leah Solar Farm, to establish whether there is overlap and any potential for interaction;
- **Scale and nature of development:** The scale and nature of the other existing and/or approved developments identified in the Zol that are likely to interact with Mylen Leah Solar Farm. Statutory definitions of major development and EIA screening thresholds may be of assistance when considering issues of scale;
- **Other factors:** For example, the nature and/or capacity of the receiving environment, which could make a significant cumulative effect with the other existing and/or approved developments more or less likely. Consider using a source-pathway receptor approach to inform the assessment.

19.4.23 The Planning Inspectorate's Advice on Cumulate Effects Assessment suggests that professional judgement may also be used to supplement the threshold criteria and in order to avoid excluding other existing and/or approved development that is:

- *"Below the threshold criteria limits but has characteristics likely to give rise to a significant effect; or*
- *Below the threshold criteria limits but could give rise to a cumulative effect by virtue of its proximity to the proposed NSIP".*

19.4.24 The Planning Inspectorate's Advice on Cumulative Effects Assessment also notes:

*"Professional judgement could be applied to support the exclusion of other existing and, or approved development that exceeds the thresholds but may not give rise to evident effects. All the other existing and, or*

*approved development considered should be documented and the reasons for inclusion or exclusion clearly stated.”*

19.4.25 Taking the above into consideration as well as Annex 1 of the Planning Inspectorate’s Advice on Cumulative Effects Assessment, the other existing and/or approved developments on the long list have been reviewed against the following criteria to form the shortlist of other existing and/or approved developments:

- **Criteria 1:** The other existing and/or approved development has a construction, operation, and/or decommissioning phase that may overlap with any phase of Mylen Leah Solar Farm;
- **Criteria 2:** The other existing and/or approved development and Mylen Leah Solar Farm share common sensitive receptors/resources which are assessed and described in the supporting environmental documentation, and have the potential to be significantly affected by the combination of the other existing and/or approved development and Mylen Leah Solar Farm;
- **Criteria 3:** The other existing and/or approved development has sufficient environmental assessment information readily and publicly available (including traffic flows) to inform the inter-project cumulative effects assessment. The assessment of each existing and/or approved development on the shortlist will be proportionate to the environmental assessment information available<sup>5</sup>.

19.4.26 Where an existing and/or approved development meets all of the above criteria, it has been included on the ‘shortlist’ and has been taken forward for further consideration in the assessment. The ‘shortlist’ is detailed below in **Table 19.3** and the location of each shortlisted existing and/or approved development is shown in **Figure 19.1: Shortlist of Other Existing and/or Approved Developments** in **Volume 2**. This shortlist will be kept under review and agreement sought with ERYC prior to the completion of the ES to allow for a robust assessment of cumulative effects. Note that the identification numbers in the first column of **Table 19.3** correspond with those in **Appendix 19.1: Long List of Other Existing and/or Approved Developments** in **Volume 3**.

---

<sup>5</sup> In the unlikely event that a Tier 1 or 2 development, which is known will be progressed, but has insufficient environmental assessment information, a detailed inter-project cumulative effects assessment may not be possible. It may, however, still be prudent to consider the development in the inter-project cumulative effects assessment. The assessment may therefore take the form of listing the development and why it has not been considered in detail, or the potential inter-project cumulative effect could be discussed at a high level (qualitatively) using professional judgement.

**Table 19.3: Shortlist of other existing and/or approved development**

Shortlist ID	Long list ID	Application reference	Planning regime	Brief description	Distance from Mylen Leah Solar Farm	Status
1.	1	EN010143 - East Yorkshire Solar Farm	Planning Act 2008	The scheme will comprise the construction, operation (including maintenance), and decommissioning of a solar photovoltaic (PV) electricity generating facility, with a total capacity exceeding 50 megawatts (MW) and export connection to the national electricity transmission system at National Grid's Drax Substation.	3.5km S	Approved Order Made on the 9 May 2025
2.	2	EN0110012 - Light Valley Solar	Planning Act 2008	The project comprises seven solar development sites, located in rural areas to the north and east of Selby, covering an area of approximately 1022ha. Within the boundaries of these sites, ground mounted solar photovoltaic (PV) modules accompanied with the necessary infrastructure to generate and store electricity, and environmental mitigation/biodiversity net gain areas, are proposed. The proposal also includes approximately 30 km of underground cabling, both on and off-site, to connect between the sites and to National Grid's transmission network.	6.5km NW	Accepted for examination on 9 March 2026

## Mylen Leah Solar Farm

Shortlist ID	Long list ID	Application reference	Planning regime	Brief description	Distance from Mylen Leah Solar Farm	Status
3.	14	21/04505/STPLF	Town and Country Planning Act 1990	Construction of solar photovoltaic development, installation of battery energy storage system (BESS), energy management and grid stabilisation equipment with landscaping, access and associated infrastructure and erection of temporary construction compounds	0km - boundary overlaps with the draft Order Limits in the North	Approved - November 2022
4.	21	21/00107/PLF	Town and Country Planning Act 1990	Change of use of land to allow the siting of 75 additional static caravans and the formalisation of the existing access road and gas tank compound (retrospective permission), with associated landscape and infrastructure works	0.75km N	Approved May 2021
5.	24	24/02531/STPLF	Town and Country Planning Act 1990	Construction of new roundabout and link road connecting The Balk with the A1079 as detailed within condition 18 of Outline planning application 18/04097/STOUT approved under appeal reference APP/E2001/W/20/3259	3.5km NE	Approved 14 April 2025
6.	42	22/02830/STREM	Town and Country Planning Act 1990	Erection of 380 dwellings with associated access, parking and infrastructure following outline application 18/04097/STOUT (all matters to be considered)	4km NE	Approved 23 March 2023

Mysten Leah Solar Farm

Shortlist ID	Long list ID	Application reference	Planning regime	Brief description	Distance from Mylen Leah Solar Farm	Status
7.	43	22/01990/STPLF	Town and Country Planning Act 1990	Construction of sub-surface cable route from Drax Power Station to Fraisthorpe Coastline with associated accesses and temporary construction compounds in association with the Scotland to England Green Link	4km SE	Approved 03 March 2023
8.	44	23/01953/STPLF	Town and Country Planning Act 1990	Erection of 193 dwellings with associated open space, landscaping and infrastructure following demolition of existing agricultural buildings	9km E	Approved 23 August 2024
9.	47	22/02118/STPLFE	Town and Country Planning Act 1990	Hybrid Planning Application comprising of: a) Full Planning Permission for the construction of a Relief Road from Thorpe Road to Station Road with drainage and landscaping, erection of an industrial unit (Use Class B2/B8 with associated parking, drainage, creation of a bund with fencing and landscaping; Continued use of the temporary construction access onto Thorpe Road (planning application 22/02029/STPLF) and b) Outline Permission for erection of a residential development (Use Class C3), community facilities including a supermarket, small retail units and small business/employment space (Use Class E), a medical centre (Use Class	8km S	Approved 26 January 2024

Mylen Leah Solar Farm

Shortlist ID	Long list ID	Application reference	Planning regime	Brief description	Distance from Mylen Leah Solar Farm	Status
				F2), public house and restaurant with accommodation (Use Class Sui Generis/C1), elderly care home accommodation (Use Class C2/C3), a two-form entry primary school (Use Class F1), community park, car parks, sports pitches and pavilion, open space, a habitat area, drainage and landscaping (All Matters Reserved)		
10.	50	25/00852/STPLF	Town and Country Planning Act 1990	Construction and installation of a Battery Energy Storage Facility with associated infrastructure, access, landscaping and buried cable grid connection route	0km (overlaps with draft Order Limits)	Approved 28th Aug 2025
11.	56	25/02146/PLF	Town and Country Planning Act 1990	Erection of a free range egg production unit (32,000 birds) with associated feed bins, egg packing and storage building, access track, parking, turning areas and associated infrastructure	7.75km N	Approved 6th November 2025
12.	57	25/01816/STREM	Town and Country Planning Act 1990	Erection of 120 dwellings and 30 garages with associated infrastructure following outline planning permission 22/01242/STOUT (Appearance, Landscaping, Layout and Scale to be considered)	9km E	Submitted 26th June 2025, awaiting decision

## Mylen Leah Solar Farm

Shortlist ID	Long list ID	Application reference	Planning regime	Brief description	Distance from Mylen Leah Solar Farm	Status
13.	62	2022/0052/SCN	Town and Country Planning Act 1990	EIA screening request for proposed solar farm	6km W	EIA not required - March 2022
14.	65	2021/0978/FULM	Town and Country Planning Act 1990	Installation of renewable energy generating station comprising ground mounted photovoltaic solar arrays together with substation, transformer stations, site accesses, internal access tracks, security measures, access gates other ancillary infrastructure and landscaping and biodiversity enhancements	8km SW	Permitted - July 2022
15.	68	ZG2024/0630/FUL	Town and Country Planning Act 1990	Installation and operation of a Battery Energy Storage System (BESS) and ancillary infrastructure	9.6km SW	Permitted January 2025
16.	69	ZG2024/0023/FULM	Town and Country Planning Act 1990	Residential development of 137 dwellings, open space, landscaping, and associated infrastructure and Community Centre with associated car parking and recreational space	10km SW	Validated - February 2024. Awaiting Decision
17.	71	ZG2025/0733/EIA	Town and Country Planning Act 1990	Construction and operation of solar photovoltaic farm and Battery Energy Storage System (BESS) including access, fencing, CCTV, internal service	8km SW	Awaiting decision - Validated July 2025

## Mylen Leah Solar Farm

Shortlist ID	Long list ID	Application reference	Planning regime	Brief description	Distance from Mylen Leah Solar Farm	Status
				tracks, ancillary equipment and scheme of landscaping		
18.	78	24/01238/FULM	Town and Country Planning Act 1990	Installation of a solar photovoltaic array with associated infrastructure including transformer, security fencing, pole mounted CCTV, temporary construction access and compound.	4km NW	Under Determination
19.	81	23/00124/FUL	Town and Country Planning Act 1990	Installation of array of ground mounted solar panels and metering kiosk	4km NW	Approved - 28 April 2023
20.	82	23/00117/FUL	Town and Country Planning Act 1990	Installation of array of ground mounted solar panels and metering kiosk	5km NW	Approved - 28 April 2023
21.	83	21/02283/FULM	Town and Country Planning Act 1990	Erection of 139 no. dwellings with associated landscaping and infrastructure	4.5km NW	Approved - 17 May 2024
22.	84	25/01321/STPLF	Town and Country Planning Act 1990	Construction and operation of a Battery Energy Storage Facility (BESS) and 20.0m high telecommunications mast with associated infrastructure, fencing, access tracks, cable corridors and landscaping	0km - boundary overlaps with the Site to the north	Approved - 12 December 2025

19.4.27 Where other existing and/or approved developments have been discounted from the shortlist, they will continue to be monitored to ensure that any changes to those developments are identified and their omission from the shortlist is reassessed prior to undertaking the cumulative assessment for the ES.

19.4.28 The Applicant recognises that Island Green Power has launched Humberhead Solar into the public domain. This development has the potential to give rise to significant cumulative effects however; a full cumulative effects assessment cannot be undertaken at this time due to lack of available detail. The progress of this development will continue to be monitored closely. The Applicant is committed to fully assessing the potential cumulative effects of this development in the ES should further details come forward within the appropriate timeframes.

### **Stage 3: Information gathering**

19.4.29 The other existing and/or approved developments that form part of the shortlist will be subject to a review of environmental information, where available, including details of:

- Location;
- Proposed design.
- Programme, including construction, operation, and decommissioning;
- Baseline data; and
- Effects arising from such other existing and/or approved developments on common sensitive receptors.

### **Stage 4: Assessment**

19.4.30 A full cumulative assessment will be reported in the ES. Should likely significant cumulative effects be identified, consideration will be given to additional mitigation to avoid, prevent, reduce or, if possible, offset any identified significant adverse cumulative effects.

19.4.31 There is no formal guidance on the criteria for determining significance of inter-project cumulative effects. The following principles will be considered in assessing the significance of inter-project cumulative effects, in accordance with the Planning Inspectorate's Advice on Cumulative Effects Assessment and in consideration of any mitigation measures required to avoid, prevent, reduce or, if possible, offset any identified significant adverse inter-project cumulative effects:

- The duration of effect (temporary or permanent);
- The extent of effect (the geographical area);
- The type of effect (whether additive or synergistic);
- The frequency of the effect; and
- The value and resilience of the receptor affected.

- 19.4.32 When considering the inter-project cumulative effects with other existing and/or approved developments, it will be assumed that standard and good practice mitigation measures will be applied to the developments (e.g., use of Construction Environmental Management Plans) and that such mitigation would be secured as part of any planning permission granted. As such, it is appropriate to rely on these mitigation measures when completing the inter-project cumulative effects assessment.
- 19.4.33 The Applicant considers it not possible to assess all the inter-project cumulative effects of decommissioning activities as there is currently no mechanism to identify other existing and/or approved developments that would be relevant at that time. However, where possible, an assessment will be completed. It is anticipated that further consideration of the potential inter-project cumulative effects of decommissioning will be a matter for the relevant consenting authority at the time.

## **19.5 What are the results of the preliminary inter-project cumulative assessment?**

- 19.5.1 This section presents a high-level overview of potential cumulative effects based on the shortlisted other existing and/or approved developments presented in **Table 19.3**. Detailed assessment of inter-project cumulative effects will be included within the ES.

### **Air quality**

- 19.5.2 With respect to air quality, potential inter-project cumulative effects could include additional construction dust impacting on receptors within 250m of the draft Order Limits and cumulative construction traffic along the same route that construction traffic from Mylen Leah Solar Farm will take.
- 19.5.3 The following other existing and/or approved developments have the potential to have cumulative effects on air quality:
- 25/00852/STPLF (construction and installation of a Battery Energy Storage Facility); and
  - 25/01321/STPLF (construction and operation of a Battery Energy Storage Facility (BESS) and 20.0m high telecommunications mast).

### **Biodiversity**

- 19.5.4 With respect to biodiversity, the following receptors have been identified as having the potential to experience inter-project cumulative effects when considering the other existing and/or approved developments detailed in **Table 19.3**:
- International/European and national statutory designated sites;
  - Non statutory designated sites;
  - Habitats of principal importance and irreplaceable habitats;
  - Invertebrates;
  - Amphibians;
  - Breeding and non-breeding birds;

- Bats; and
- Otters

19.5.5 Biodiversity surveys are ongoing and a final assessment will be provided with the ES. For the purpose of this preliminary assessment the potential inter-project cumulative effects for the receptors listed above include:

- Habitat loss (land take);
- Habitat degradation;
- Habitat fragmentation (including connectivity);
- Displacement of species;
- Incidental mortality of species; and
- Disturbance effects (comprising light, noise and visual disturbance).

19.5.6 All other existing and/or approved developments listed in **Table 19.3** have the potential to result in inter-project cumulative effects relating to the biodiversity receptors and impacts outlined above.

#### **Cultural heritage**

19.5.7 With respect to cultural heritage, the following other existing and/or approved developments have the potential to result in inter-project cumulative effects with Mylen Leah Solar Farm:

- EN010143 East Yorkshire Solar Farm;
- 21/04505/STPLF (Soay Solar Farm and a Greener Grid Park);
- 25/00852/STPLF (construction and installation of a Battery Energy Storage Facility);
- 25/01321/STPLF (construction and operation of a Battery Energy Storage Facility (BESS) and 20.0m high telecommunications mast); and
- 21/00107/PLF (Allerthorpe Park Golf Club static caravans and associated infrastructure works).

19.5.8 Other existing and/or approved developments detailed in **Table 19.3** that are not listed above are considered unlikely to result in inter-project cumulative effects on cultural heritage receptors. This is due to a number of reasons, including the distance of the other existing and/or approved developments from Mylen Leah Solar Farm and the lack of visibility or other connections with the heritage assets in the area.

#### **Land and groundwater**

19.5.9 With respect to land and groundwater, the following other existing and/or approved developments have the potential to result in inter-project cumulative effects with Mylen Leah Solar Farm:

- 21/04505/STPLF (Soay Solar Farm and a Greener Grid Park);
- 25/00852/STPLF (construction and installation of a Battery Energy Storage Facility);

- 21/00107/PLF (Allerthorpe Park Golf Club static caravans and associated infrastructure works); and
- 25/01321/STPLF (construction and operation of a Battery Energy Storage Facility (BESS) and 20.0m high telecommunications mast).

### **Landscape and visual**

19.5.10 With respect to landscape and visual, the following other existing and/or approved developments have the potential to result in inter-project cumulative effects with Mylen Leah Solar Farm:

- EN010143 - East Yorkshire Solar Farm;
- EN0110012 - Light Valley Solar;
- 21/04505/STPLF (Soay Solar Farm and a Greener Grid Park);
- 25/00852/STPLF (construction and installation of a Battery Energy Storage Facility);
- 21/00107/PLF (Allerthorpe Park Golf Club static caravans and associated infrastructure works);
- 24/02531/STPLF (Construction of new roundabout and link road connecting The Balk with the A1079 as detailed within condition 18 of Outline planning application);
- 22/02830/STREM (Erection of 380 dwellings with associated access, parking and infrastructure following outline application);
- 22/01990/STPLF (Construction of sub-surface cable route from Drax Power Station to Fraisthorpe Coastline with associated accesses and temporary construction compounds in association with the Scotland to England Green Link);
- 25/00852/STPLF (Construction and installation of a Battery Energy Storage Facility with associated infrastructure, access, landscaping and buried cable grid connection route);
- 24/01238/FULM (Installation of a solar photovoltaic array with associated infrastructure including transformer, security fencing, pole mounted CCTV, temporary construction access and compound);
- 23/00124/FUL (Installation of array of ground mounted solar panels and metering kiosk);
- 21/02283/FULM (Erection of 139 no. dwellings with associated landscaping and infrastructure); and
- 25/01321/STPLF (construction and operation of a Battery Energy Storage Facility (BESS) and 20.0m high telecommunications mast).

19.5.11 These other existing and/or approved developments are located within the ZTV for Mylen Leah Solar Farm and could give rise to locally significant effects on landscape character and visual receptors lying between the proposed sites. If the projects were constructed in tandem, it is likely that the cumulative landscape and visual effects in the tracts of the landscape described would be greater than if the projects were constructed in isolation.

Therefore, assuming a worst case scenario, it is possible that significant cumulative landscape and visual effects may arise.

### **Noise and vibration**

19.5.12 With respect to construction noise, the following other existing and/or approved developments have the potential to result in inter-project cumulative effects:

- 24/02531/STPLF (Construction of new roundabout and link road);
- 25/00852/STPLF (Construction and installation of a Battery Energy Storage Facility); and
- 25/01321/STPLF (Construction and operation of a Battery Energy Storage Facility (BESS)).

19.5.13 With respect to operational noise, the following other existing and/or approved developments have the potential to result in inter-project cumulative effects:

- 21/04505/STPLF (Construction of solar photovoltaic development, installation of battery energy storage system (BESS));
- 25/00852/STPLF (Construction and installation of a Battery Energy Storage Facility); and
- 25/01321/STPLF (Construction and operation of a Battery Energy Storage Facility (BESS)).

19.5.14 With respect to operational and construction vibration, no other existing and/or approved developments have the potential to result in inter-project cumulative effects.

19.5.15 The following additional development is noted:

- 21/00107/PLF (Erection of 75 Static Homes).

19.5.16 Whilst this development is not anticipated to have an impact on cumulative noise levels in the area, it may introduce new Noise Sensitive Receptors (NSRs) that may need consideration with the Noise and Vibration ES chapter.

### **Population**

19.5.17 With respect to population, the following other existing and/or approved developments which are located within the 500m study area have the potential to result in inter-project cumulative effects on businesses, users of recreational routes, tourism receptors, employment and gross value added, occupancy rates and the agricultural economy:

- 21/04505/STPLF (Soay Solar Farm and a Greener Grid Park);
- 25/00852/STPLF (Battery Energy Storage Facility and associated infrastructure); and
- 25/01321/STPLF (Battery Energy Storage Facility and 20.0m high telecommunications mast).

19.5.18 In addition to the above other existing and/or approved developments, the following other existing and/or approved developments, identified within 3km of the draft Order Limits have the potential to result in inter-project cumulative effects on tourism:

- EN010143 East Yorkshire Solar Farm; and
- 21/00107/PLF (Allerthorpe Park Golf Club static caravans and associated infrastructure works).

19.5.19 The following other existing and/or approved developments, identified within East Riding of Yorkshire, have the potential to result in inter-project cumulative effects on employment and gross value added, occupancy rates and the agricultural economy:

- EN0110012 Light Valley Solar;
- 22/02830/STREM (Erection of 380 dwellings with associated access);
- 22/01990/STPLF (Construction of sub-surface cable route);
- 23/01953/STPLF (Erection of 193 dwellings with associated infrastructure);
- 22/02118/STPLFE (Construction of relief road, erection of residential development and associated community facilities);
- 22/03575/EIASCO (Warehousing and distribution with ancillary office and infrastructure);
- 24/01238/FULM (Installation of solar photovoltaic array with associated infrastructure);
- 23/00124/FUL (Installation of array of ground mounted solar panels);
- 23/00117/FUL (Installation of array of ground mounted solar panels); and
- 21/02283/FULM (Erection of 139 no. dwellings with associated landscaping and infrastructure).

### **Transport and access**

19.5.20 With respect to transport and access, the addition of cumulative traffic flows will increase the baseline traffic level that Mylen Leah Solar Farm traffic will be measured against. As such, the percentage impact of construction traffic on the study area network will be reduced. The potential impact of other existing and/or approved developments together with Mylen Leah Solar Farm construction traffic is highly unlikely to affect network capacity.

19.5.21 The access route for Mylen Leah Solar Farm north of the A163 is not shared with other existing and/or approved developments and as such, there are unlikely to be further inter-project cumulative effects within the study area. Should this situation change, any inter-project cumulative effects will be considered in the ES. An Outline Construction Traffic Management Plan (Outline CTMP) will be submitted in support of the DCO application. The finalised Construction Traffic Management Plan would be secured pursuant to the DCO as a requirement, and in accordance with the Outline CTMP.

## Water

19.5.22 With respect to water, the majority of the other existing and/or approved developments are not located within the same Water Framework Directive waterbody catchments as Mylen Leah Solar Farm so there is therefore no hydrological connection to this receptor. The underground grid connection corridor of Mylen Leah Solar Farm is located within the same hydrological catchment as four of the other existing and/or approved developments for Pocklington Beck Water Framework Directive waterbody and Pocklington Canal SSSI, being application references:

- 21/04505/STPLF (Soay Solar Farm and a Greener Grid Park);
- 21/00107/PLF (Allerthorpe Park Golf Club static caravans and associated infrastructure works);
- 25/00852/STPLF (construction and installation of a Battery Energy Storage Facility); and
- 25/01321/STPLF (construction and operation of a Battery Energy Storage Facility (BESS) and 20.0m high telecommunications mast).

19.5.23 However, it is unlikely that the other existing and/or approved developments listed in **Table 19.3** will result in significant inter-project cumulative effects with Mylen Leah Solar Farm due to the implementation of the Outline Construction Environmental Management Plan (Outline CEMP), Outline Operational Environmental Management Plan (Outline OEMP) and Outline Decommissioning Environmental Management Plan (Outline DEMP) to control silts and sediments entering the local watercourses. It is assumed that the other existing and/or approved developments will also adopt appropriate development-free easements to limit the potential for the mobilisation of sediment to watercourses.

19.5.24 In regard to flood risk as a receptor, there are unlikely to be cumulative effects from the other existing and/or approved developments listed in **Table 19.3**, as the main common thread with respect to the identified other existing and/or approved developments is the requirement to limit offsite surface water discharges to greenfield rates (where an effect is identified) that will mimic the natural runoff scenario and ensure no increase in flood risk either onsite or downstream. In addition, Mylen Leah Solar Farm is positioned in mostly Flood Zone 1 and within areas at generally low risk of flooding from other sources.

## Glint and glare

19.5.25 With respect to glint and glare, the following other existing and/or approved developments have the potential to result in inter-project cumulative effects with Mylen Leah Solar Farm:

- 21/04505/STPLF (Soay Solar Farm and a Greener Grid Park);
- 25/00852/STPLF (construction and installation of a Battery Energy Storage Facility);
- 21/00107/PLF (Allerthorpe Park Golf Club static caravans and associated infrastructure works); and

- 25/01321/STPLF (construction and operation of a Battery Energy Storage Facility (BESS) and 20.0m high telecommunications mast).

19.5.26 A standalone glint and glare assessment will be appended to the ES, which will discuss any potential inter-project cumulative effects with Mylen Leah Solar Farm. Therefore, glint and glare will not form part of the Cumulative Effects ES chapter.

### **Soil**

19.5.27 The following other existing and/or approved developments have the potential to have cumulative effects on soil receptors:

- 21/04505/STPLF (Soay Solar Farm and a Greener Grid Park);
- 25/00852/STPLF (construction and installation of a Battery Energy Storage Facility); and
- 25/01321/STPLF (construction and operation of a Battery Energy Storage Facility (BESS) and 20.0m high telecommunications mast).

19.5.28 A cumulative assessment will be undertaken for Best and Most Versatile agricultural land at a regional level. This will be assessed in the ES once the full suite of agricultural land classification surveys has been undertaken.

## **19.6 What difficulties and uncertainties have been encountered in this preliminary cumulative effects assessment?**

19.6.1 The assessment of inter-project cumulative effects will be limited to publicly available information obtained from the relevant planning applications on the planning portals of ERYC, City of York Council, North Yorkshire Council, and the Planning Inspectorate. For some of the shortlisted other existing and/or approved developments, relevant information to inform this assessment may not be available.

## **19.7 What further work is required to inform the full cumulative effects assessment in the DCO application?**

19.7.1 The long list and shortlist of other existing and/or approved developments presented within this chapter have not been finalised and agreed at this stage. Further consultation with ERYC to agree the final shortlist for inclusion in the ES will be undertaken.

19.7.2 Any other existing and/or approved developments that are identified will be considered as part of the long list and a decision will be taken in accordance with the methodology detailed in **Section 19.4** to determine whether a particular development will be included in the shortlist. An assessment cut-off date will be reported within the ES, as advised in the Planning Inspectorate's Nationally Significant Infrastructure Projects: Advice on Cumulative Effects Assessment.

---

<sup>1</sup> The Infrastructure Planning (Environmental Impact Assessment) Regulations 2017. Available online: [The Infrastructure Planning \(Environmental Impact Assessment\) Regulations 2017](#)

---

<sup>2</sup> Department for Energy Security and Net Zero (December 2025, published January 2026). Overarching National Policy Statement for Energy (NPS EN-1), 2025 Available online: [Overarching National Policy Statement for energy \(EN-1\), 2025 - GOV.UK](#)

<sup>3</sup> Department for Energy Security and Net Zero (December 2025, published January 2026). National Policy Statement for Renewable Energy Infrastructure (NPS EN-3), 2025 Available online [National Policy Statement for renewable energy infrastructure \(EN-3\), 2025 - GOV.UK](#)

<sup>4</sup> Department for Energy Security and Net Zero (December 2025, published January 2026). National Policy Statement for Electricity Networks Infrastructure (NPS EN-5), 2025 Available online: [National Policy Statement for electricity networks infrastructure \(EN-5\), 2025 - GOV.UK](#)

<sup>5</sup> Ministry of Housing, Communities & Local Government (2024) National Planning Policy Framework. Available online: [National Planning Policy Framework - GOV.UK](#)

<sup>6</sup> East Riding of Yorkshire Council (2025) East Riding of Yorkshire Local Plan Update 2020–2039. Available online: [East Riding Local Plan Update](#)

<sup>7</sup> Planning Inspectorate (2024) Nationally Significant Infrastructure Projects: Advice on Cumulative Effects Assessment. Available online: [Nationally Significant Infrastructure Projects: Advice on Cumulative Effects Assessment - GOV.UK](#)

<sup>8</sup> Institute of Environmental Management and Assessment (2011) The State of Environmental Impact Assessment in the UK. Available online: [2011-State-of-EIA- IEMA.pdf](#)

<sup>9</sup> Planning Inspectorate (2025). Nationally Significant Infrastructure Projects: Advice on Cumulative Effects Assessment. Available online: [Nationally Significant Infrastructure Projects: Advice on Cumulative Effects Assessment - GOV.UK](#)

<sup>10</sup> Institute of Environmental Management and Assessment (2022) Assessing Greenhouse Gas Emissions and Evaluating their Significance. Available online: [2022 iema greenhouse gas guidance eia.pdf](#)

<sup>11</sup> Institute of Air Quality Management (2024). Guidance of the Assessment of Dust from Demolition and Construction (Version 2.2). Available online :[Construction-Dust-Guidance-Jan-2024.pdf](#)

<sup>12</sup> Design Manual for Roads and Bridges (2020). LA 113 Road drainage and the water environment. Available online: [LA 113 revision 1 Road drainage and the water environment-web.pdf](#)

<sup>13</sup> Planning Act 2008. Available online: [Planning Act 2008](#)