

N

Draft Order Limits

Zone of Influence

- Habitats of principal importance and irreplaceable habitats including ancient woodland
- Notable plants and plant communities
- Invertebrates
- Fish
- Reptiles
- Bats
- Other species of principal importance

30m Zone of Influence

- Badgers

200m Zone of Influence

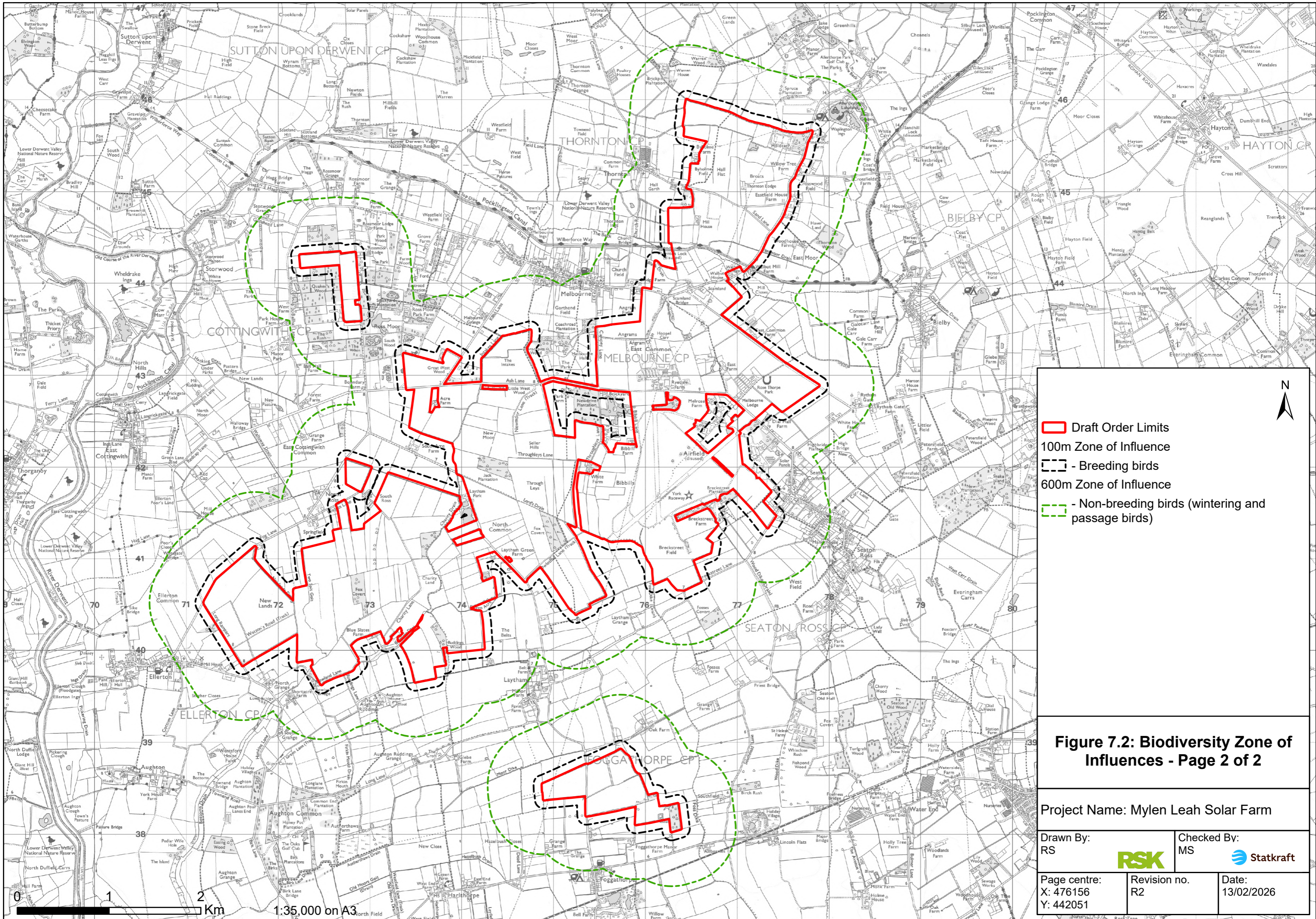
- Water vole
- Otters

500m Zone of Influence

- Amphibians

Figure 7.2: Biodiversity Zone of Influences - Page 1 of 2

Project Name: Mylen Leah Solar Farm	
Drawn By: RS	Checked By: MS
Page centre: X: 476258 Y: 442056	Revision no. R2
Date: 13/02/2026	



- Draft Order Limits
- 100m Zone of Influence
- Breeding birds
- 600m Zone of Influence
- Non-breeding birds (wintering and passage birds)

Figure 7.2: Biodiversity Zone of Influences - Page 2 of 2

Project Name: Mylen Leah Solar Farm	
Drawn By: RS	Checked By: MS
Page centre: X: 476156 Y: 442051	Revision no. R2
Date: 13/02/2026	