

Key

BS 5837 Category Colours		
Higher quality trees. Concerted efforts should be made to integrate these trees into design layouts and avoid their RPA entirely.	● A ● B	A B
Lower quality trees or smaller trees. Retention of these trees may be desirable in terms of future succession and providing ecological and environmental benefits.	● C ● U	C U

- Draft Order Limits
- Underground grid connection corridor
- Topographic Survey
- Hedge
- Notable Tree RPA
- Ancient and Veteran Tree RPA

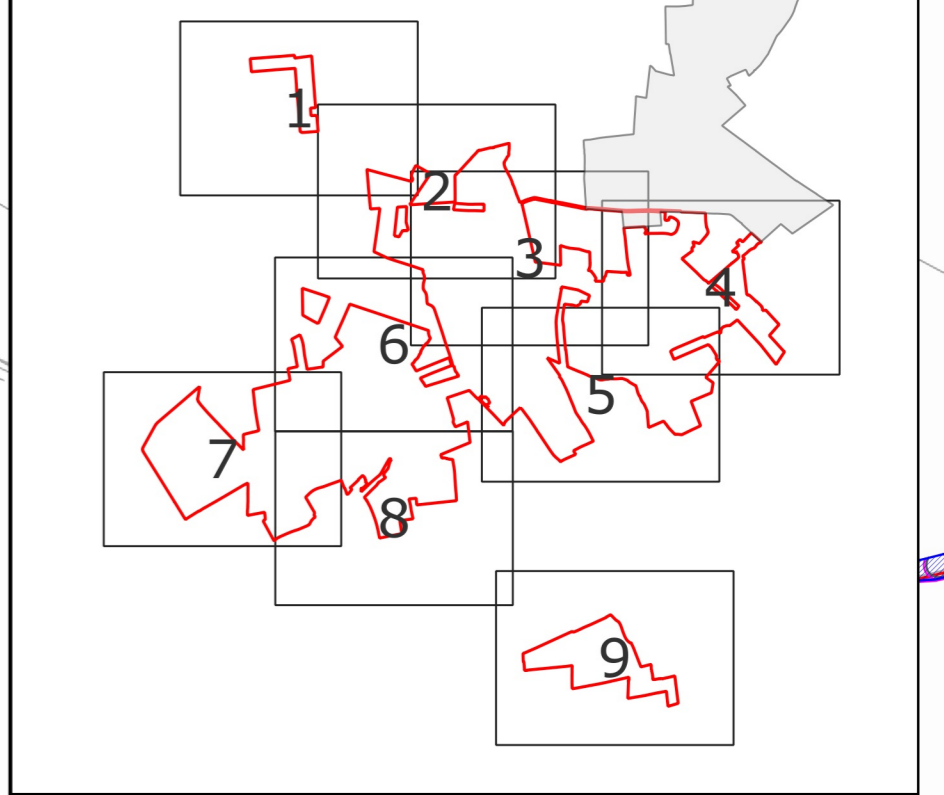


Figure 7.3: Tree Constraints Plan - Sheet 1 of 9

Project Name: Mylen Leah Solar Farm

Drawn By: GE0173

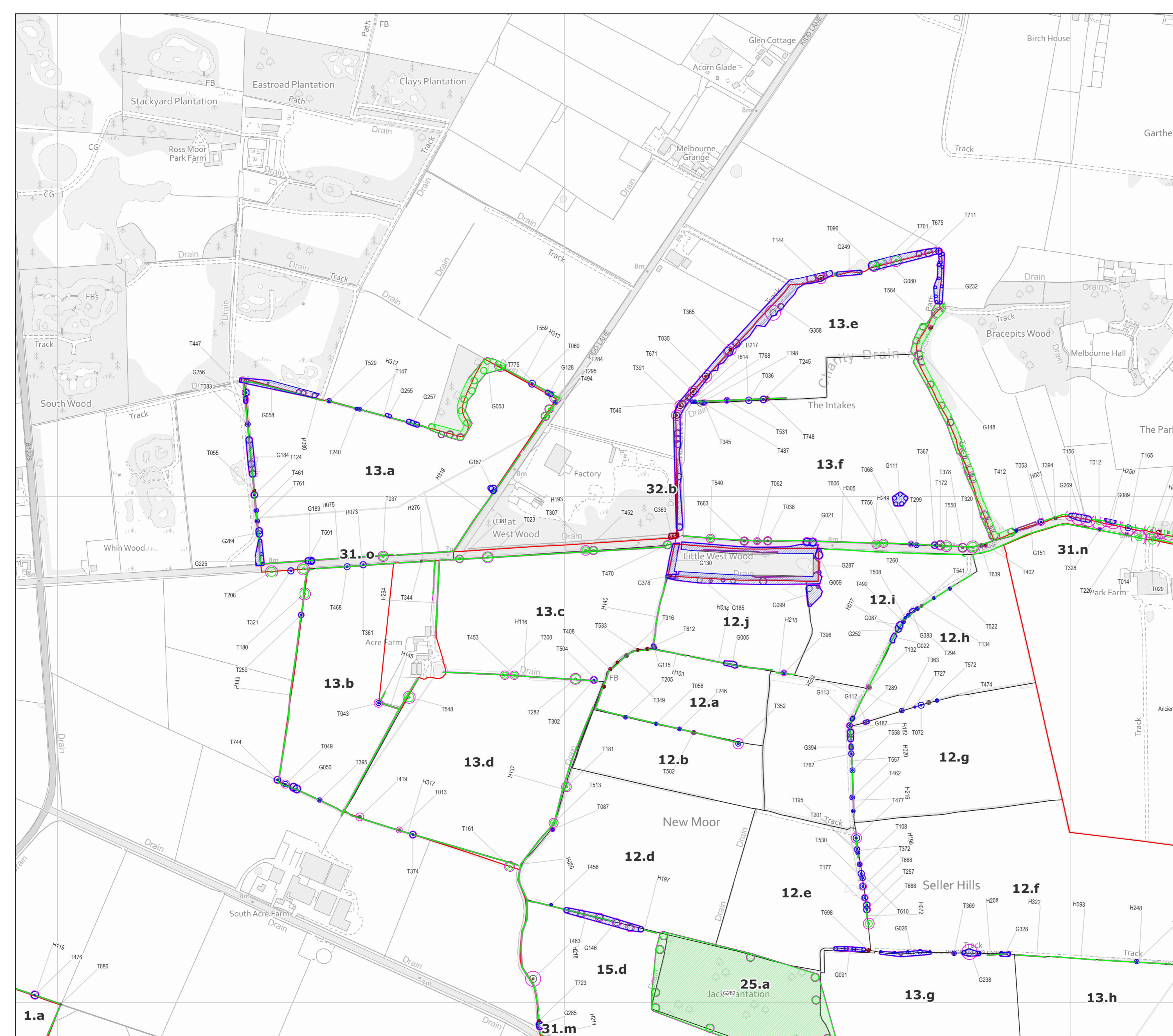
Checked By: MS



Page centre:
X: 473052
Y: 443833

Revision no.
R1

Date:
13/02/2026



Key

BS 5837 Category Colours

Higher quality trees. Concerted efforts should be made to integrate these trees into design layouts and avoid their RPA entirely.	● A	● B
Lower quality trees or smaller trees. Retention of these trees may be desirable in terms of future succession and providing ecological and environmental benefits.	● C	● U

	Draft Order Limits
	Underground grid connection corridor
	Topographic Survey
	Hedge
	Notable Tree RPA
	Ancient and Veteran Tree RPA

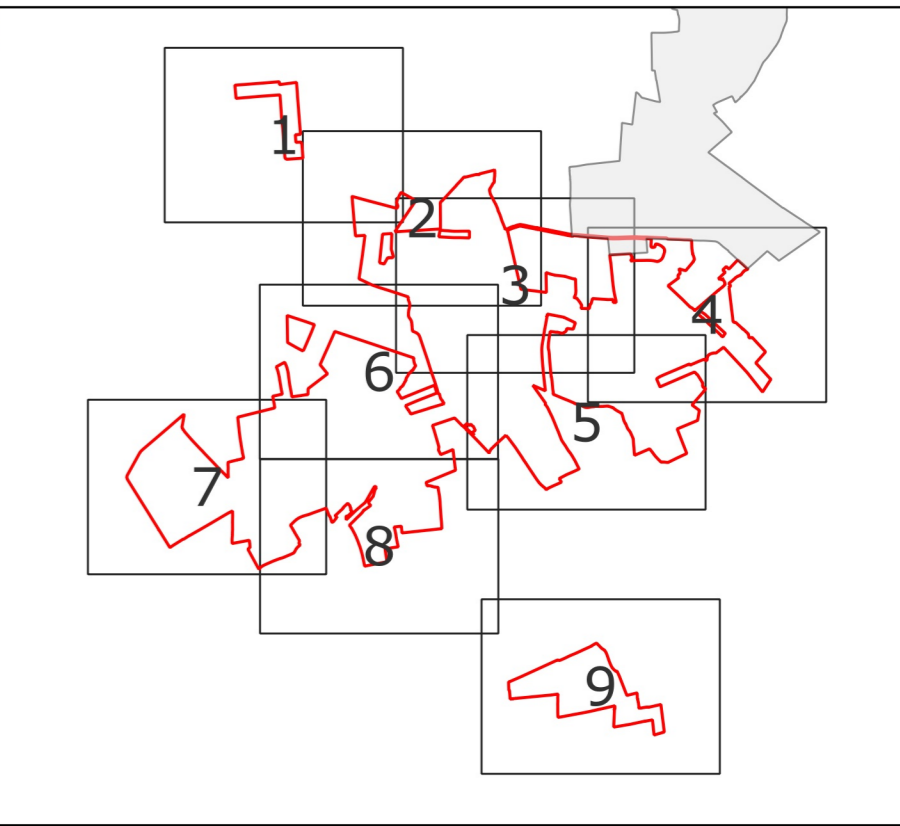
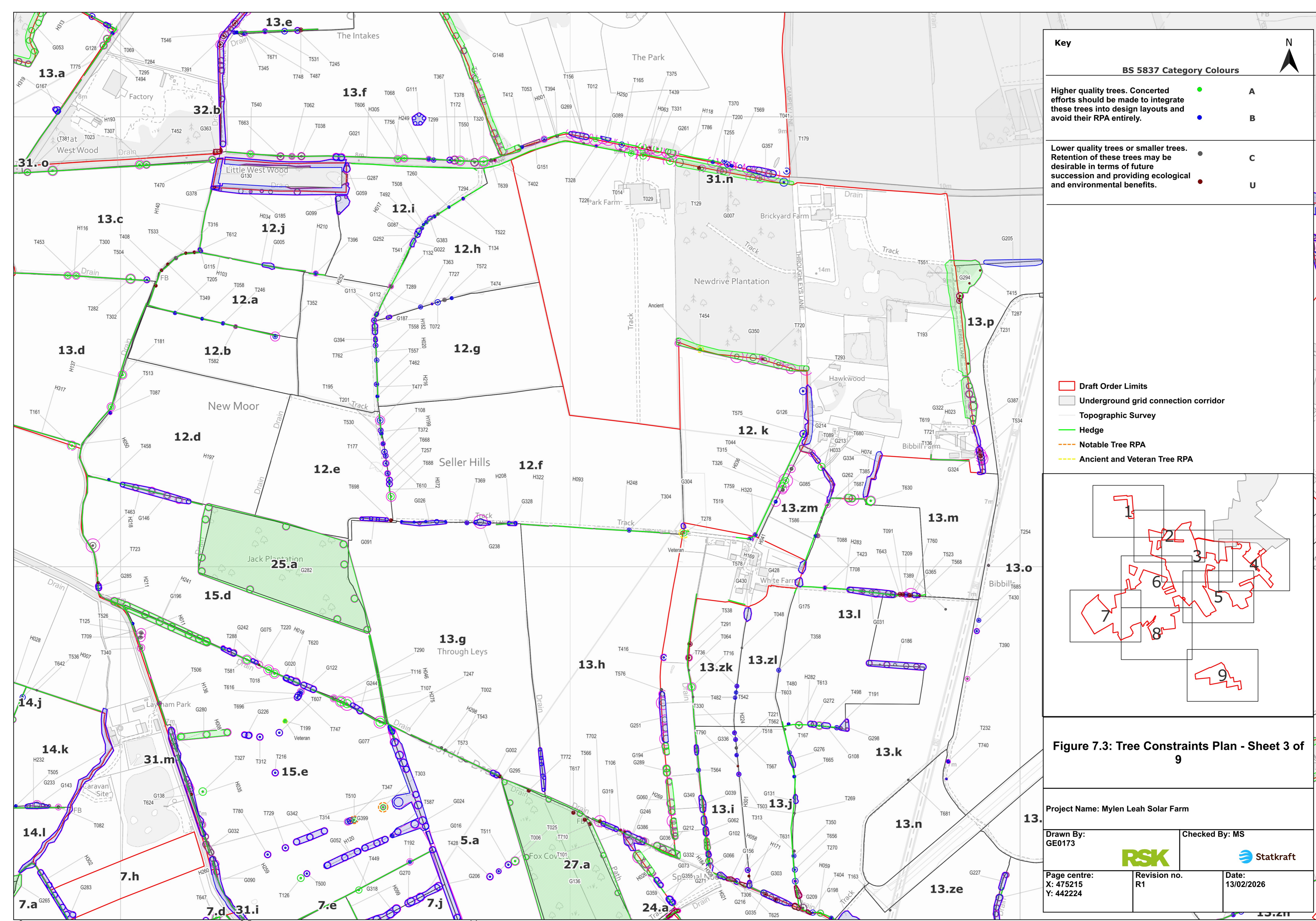


Figure 7.3: Tree Constraints Plan - Sheet 2 of 9

Project Name: Mylen Leah Solar Farm	
Drawn By: GE0173	Checked By: MS
Page centre: X: 474373 Y: 442944	Revision no. R1
Date: 13/02/2026	



Key		BS 5837 Category Colours	
Higher quality trees. Concerted efforts should be made to integrate these trees into design layouts and avoid their RPA entirely.	●	A	●
	●	B	●
Lower quality trees or smaller trees. Retention of these trees may be desirable in terms of future succession and providing ecological and environmental benefits.	●	C	●
	●	U	●

Draft Order Limits
Underground grid connection corridor
Topographic Survey
Hedge
Notable Tree RPA
Ancient and Veteran Tree RPA

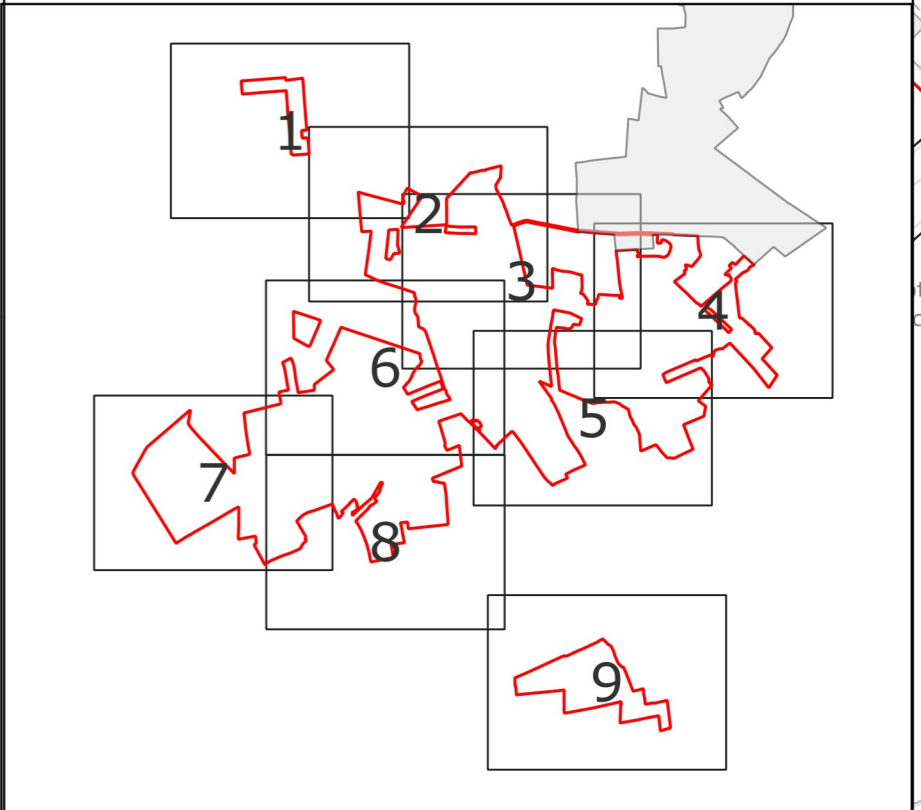
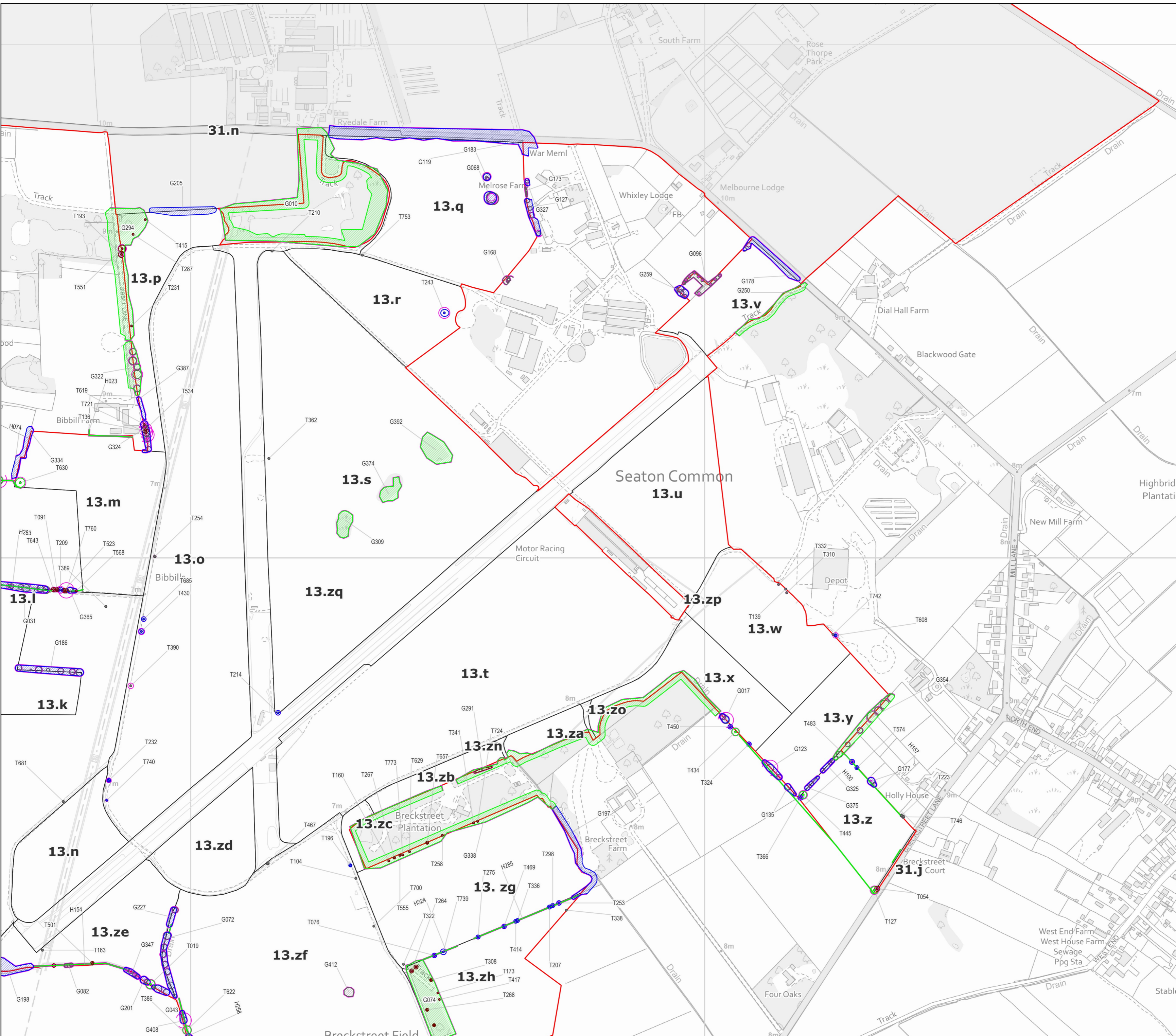


Figure 7.3: Tree Constraints Plan - Sheet 3 of 9

Project Name: Mylen Leah Solar Farm		
Drawn By: GE0173	Checked By: MS	
Page centre: X: 475215 Y: 442224	Revision no. R1	Date: 13/02/2026



Key		
BS 5837 Category Colours		
Higher quality trees. Concorted efforts should be made to integrate these trees into design layouts and avoid their RPA entirely.	● A	A
	● B	B
Lower quality trees or smaller trees. Retention of these trees may be desirable in terms of future succession and providing ecological and environmental benefits.	● C	C
	● U	U

Draft Order Limits
Underground grid connection corridor
Topographic Survey
Hedge
Notable Tree RPA
Ancient and Veteran Tree RPA

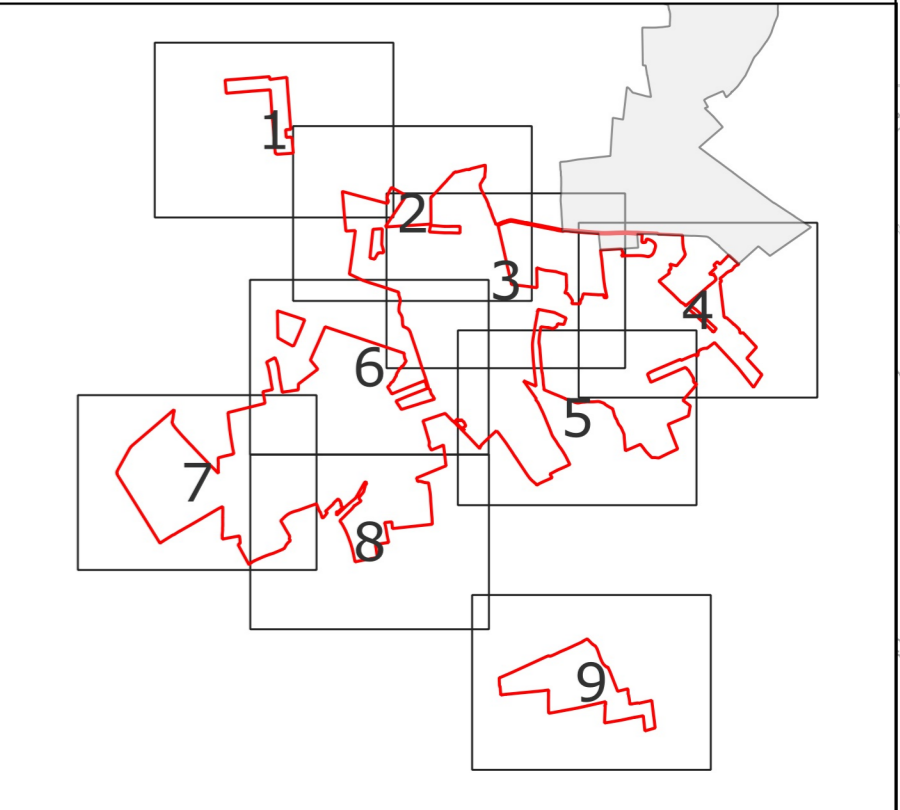
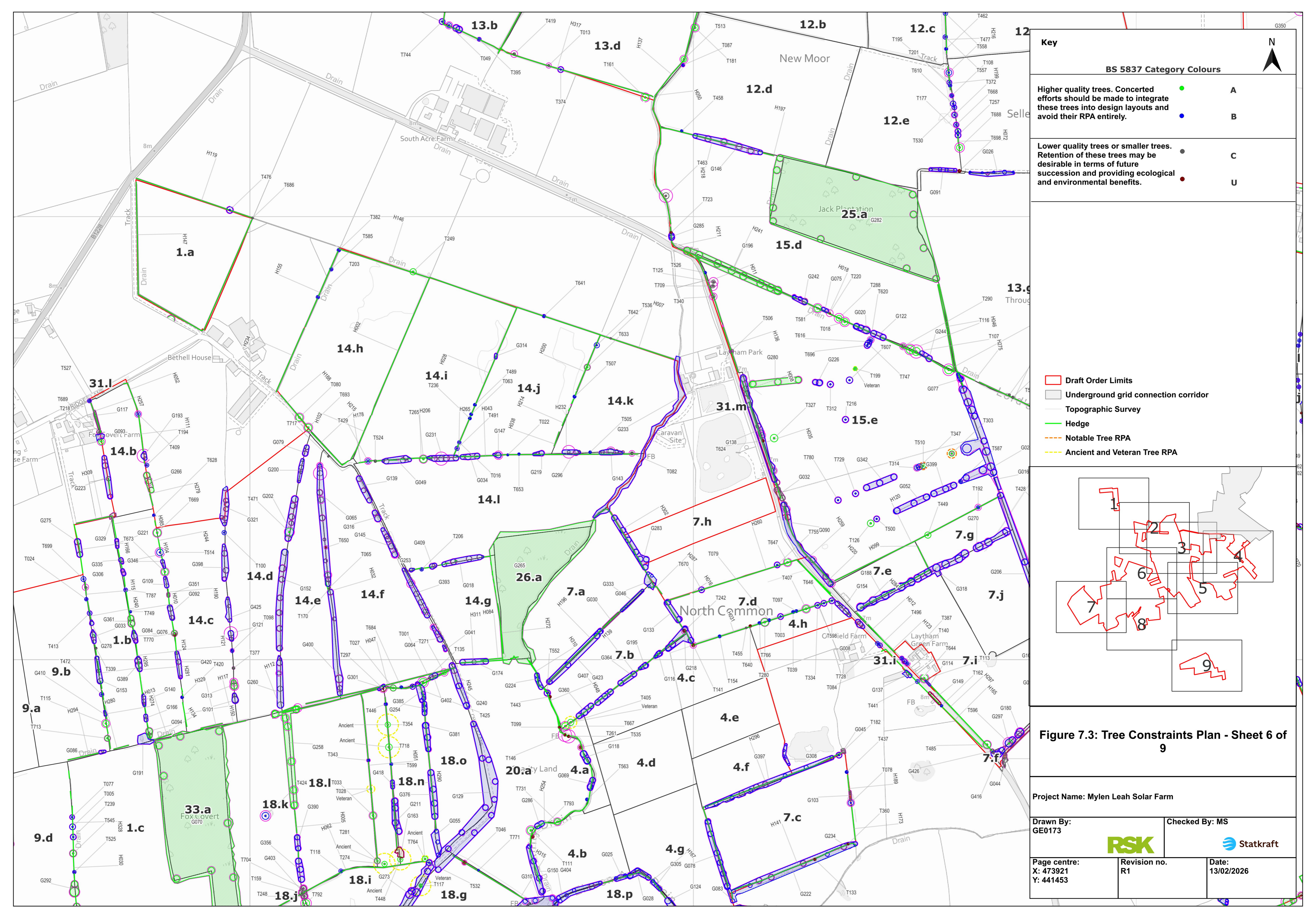


Figure 7.3: Tree Constraints Plan - Sheet 4 of 9

Project Name: Mylen Leah Solar Farm		
Drawn By: GE0173	Checked By: MS	
Page centre: X: 477085 Y: 442071	Revision no. R1	Date: 13/02/2026



Key

BS 5837 Category Colours

Higher quality trees. Concerted efforts should be made to integrate these trees into design layouts and avoid their RPA entirely.	●	A
Lower quality trees or smaller trees. Retention of these trees may be desirable in terms of future succession and providing ecological and environmental benefits.	●	B
	●	C
	●	U

	Draft Order Limits
	Underground grid connection corridor
	Topographic Survey
	Hedge
	Notable Tree RPA
	Ancient and Veteran Tree RPA

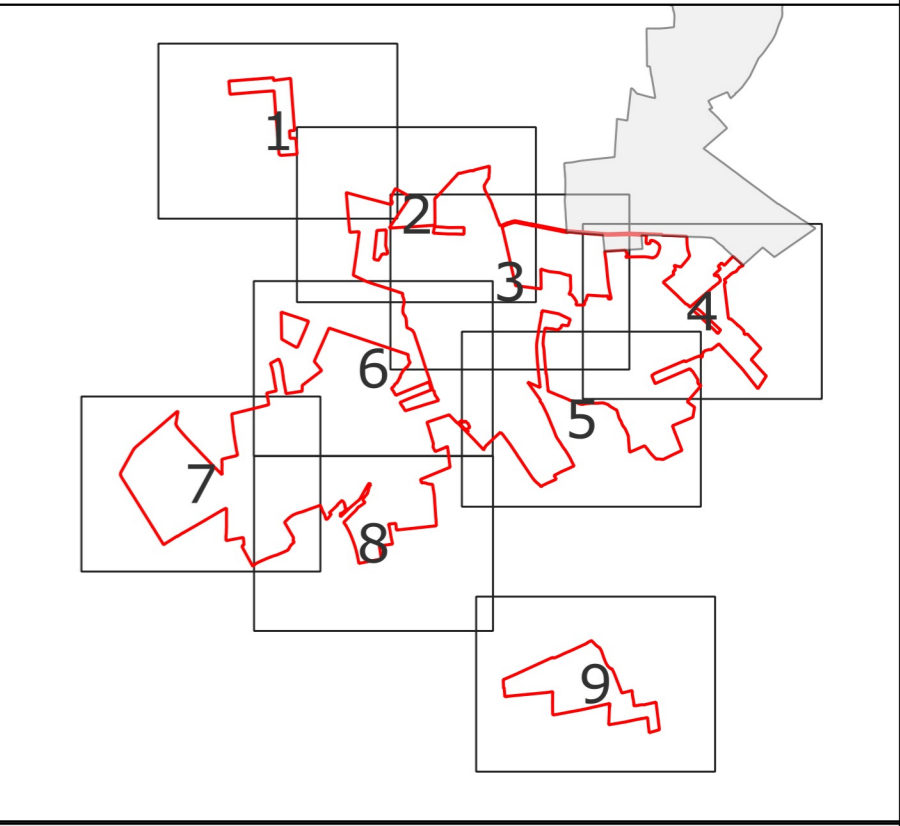
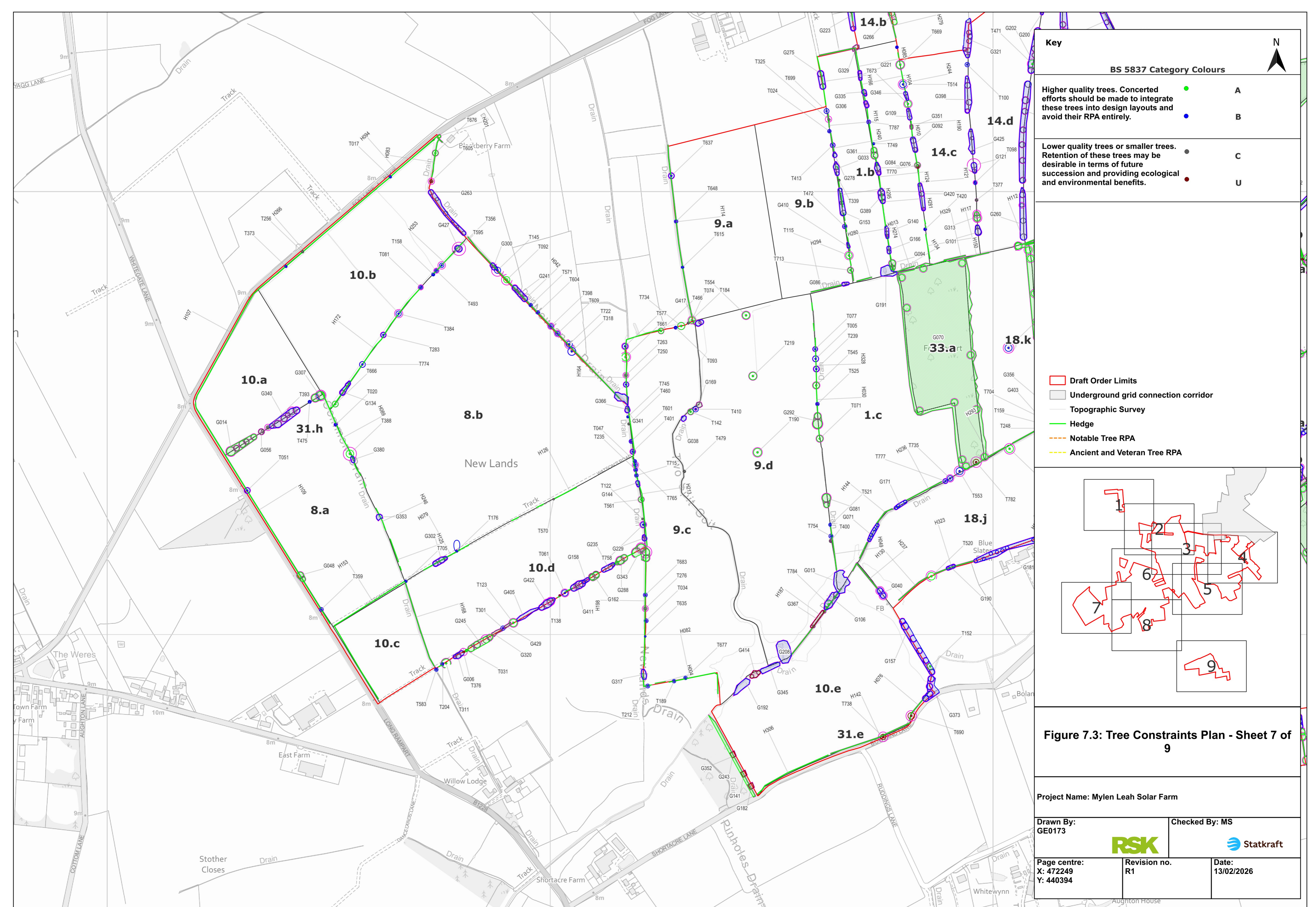


Figure 7.3: Tree Constraints Plan - Sheet 6 of 9

Project Name: Mylen Leah Solar Farm		
Drawn By: GE0173	Checked By: MS	
Page centre: X: 473921 Y: 441453	Revision no. R1	Date: 13/02/2026



Key

BS 5837 Category Colours		
Higher quality trees. Concerted efforts should be made to integrate these trees into design layouts and avoid their RPA entirely.	● A	● B
Lower quality trees or smaller trees. Retention of these trees may be desirable in terms of future succession and providing ecological and environmental benefits.	● C	● U

- Draft Order Limits
- Underground grid connection corridor
- Topographic Survey
- Hedge
- Notable Tree RPA
- Ancient and Veteran Tree RPA

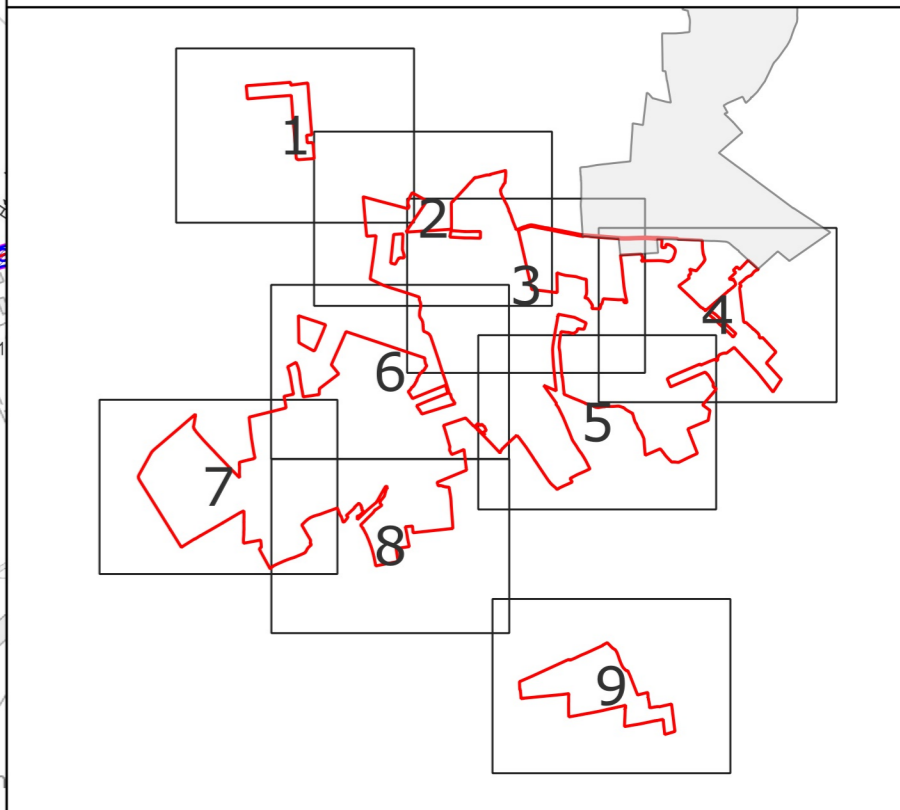
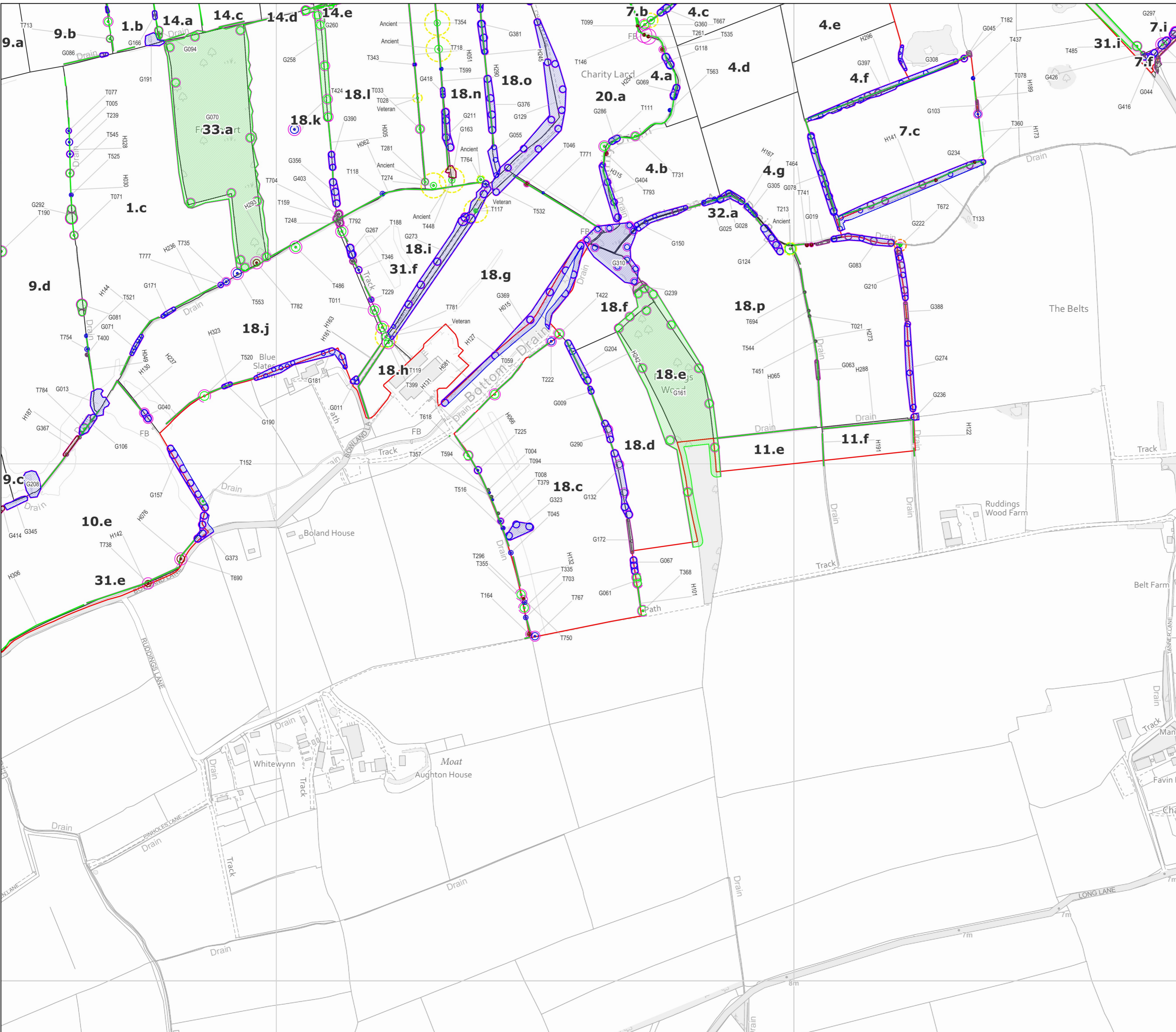


Figure 7.3: Tree Constraints Plan - Sheet 7 of 9

Project Name: Mylen Leah Solar Farm

Drawn By: GE0173	Checked By: MS
Page centre: X: 472249 Y: 440394	Date: 13/02/2026



Key

BS 5837 Category Colours

- | | |
|--|-----|
| Higher quality trees. Concerted efforts should be made to integrate these trees into design layouts and avoid their RPA entirely. | ● A |
| | ● B |
| Lower quality trees or smaller trees. Retention of these trees may be desirable in terms of future succession and providing ecological and environmental benefits. | ● C |
| | ● U |

- Draft Order Limits
- Underground grid connection corridor
- Topographic Survey
- Hedge
- Notable Tree RPA
- Ancient and Veteran Tree RPA

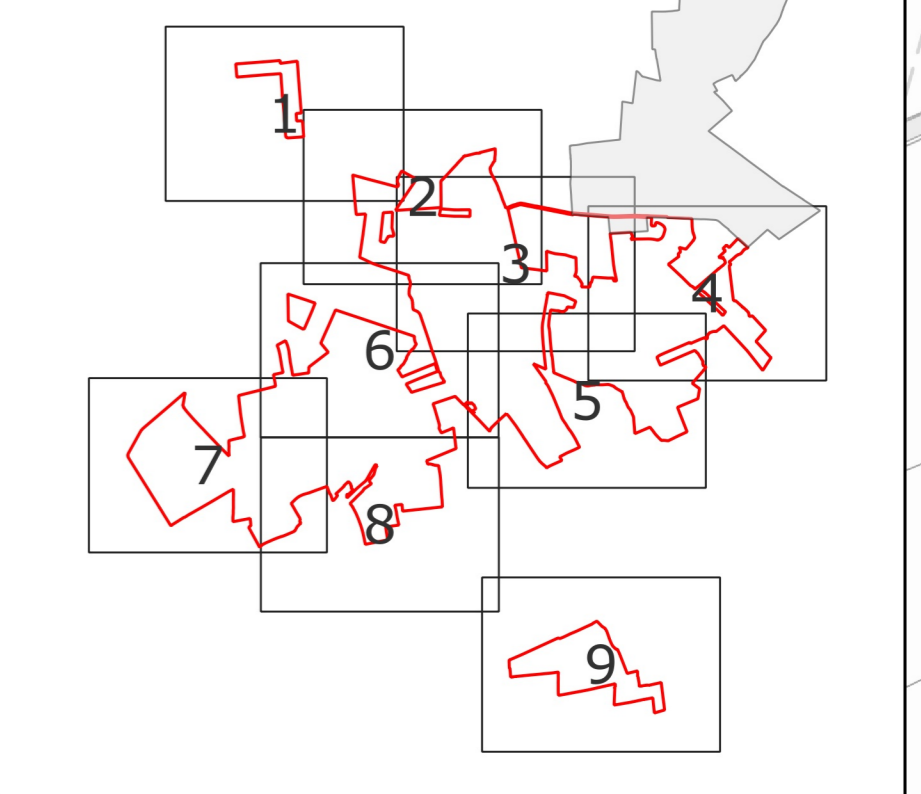


Figure 7.3: Tree Constraints Plan - Sheet 8 of 9

Project Name: Mylen Leah Solar Farm

Drawn By: GE0173

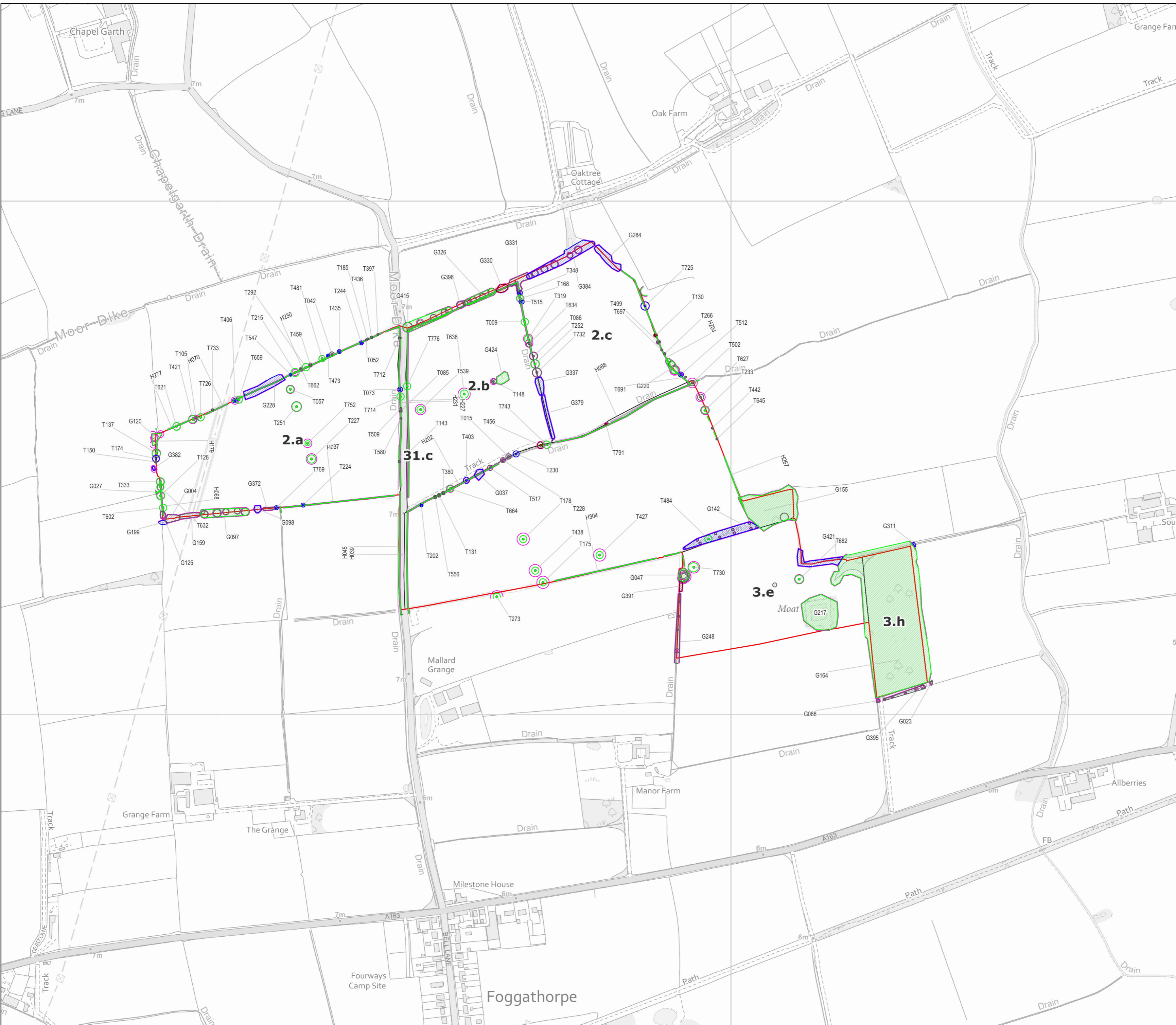
Checked By: MS



Page centre:
X: 473917
Y: 439891

Revision no.
R1

Date:
13/02/2026



Key		BS 5837 Category Colours	
Higher quality trees. Concerted efforts should be made to integrate these trees into design layouts and avoid their RPA entirely.	●	A	●
	●	B	●
Lower quality trees or smaller trees. Retention of these trees may be desirable in terms of future succession and providing ecological and environmental benefits.	●	C	●
	●	U	●

	Draft Order Limits
	Underground grid connection corridor
	Topographic Survey
	Hedge
	Notable Tree RPA
	Ancient and Veteran Tree RPA

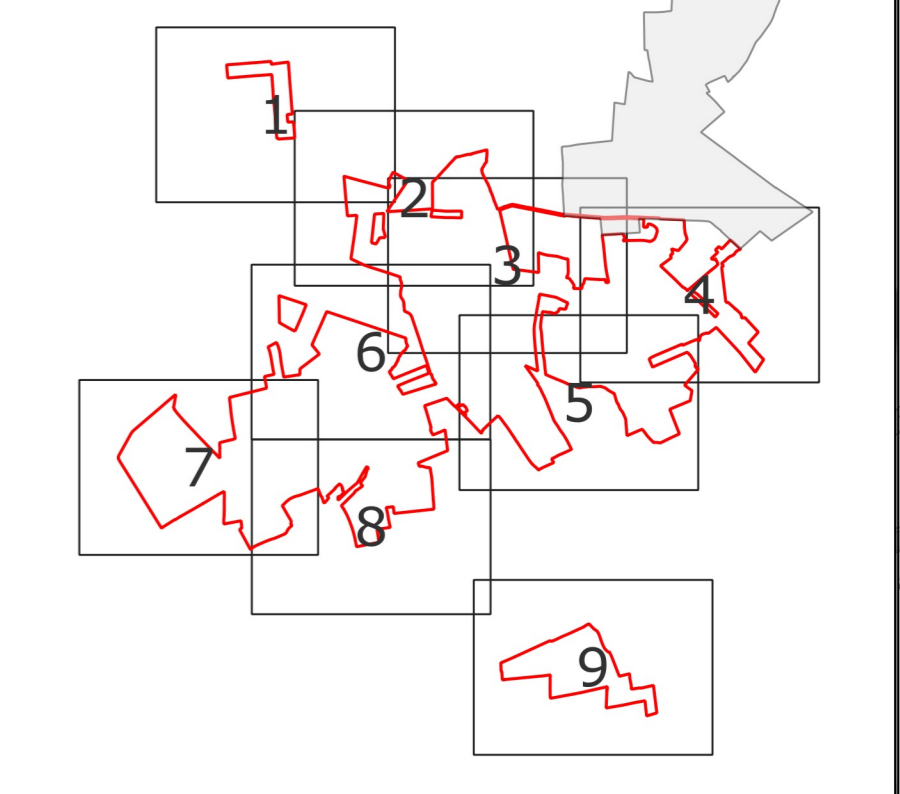


Figure 7.3: Tree Constraints Plan - Sheet 9 of 9

Project Name: Mylen Leah Solar Farm		
Drawn By: GE0173	Checked By: MS	
Page centre: X: 476034 Y: 438385	Revision no. R1	Date: 13/02/2026