

Legend

- Draft Order Limits
- Distance radii from nearest potential PV module (1km, 2km, 3km)
- Existing Woodland
- Existing Buildings
- Extent of proposed area for PV panels

Zone of Theoretical Visibility (3.5m to top of panels)

- More theoretical visibility
- Less theoretical visibility

FIGURE DATA:
 This figure has been based on the following data:
 Layout file: Mylen Leah 100F
 Terrain data: LiDAR-5m-derived-DSM-derived.asc
 Viewer's eye height: 2m above ground level
 Calculation grid size: 5m

NOTES:
 This drawing is based upon computer generated Zone of Theoretical Visibility (ZTV) studies produced using the Viewshed routine in the Visibility Analysis plugin for QGIS

The areas shown are the maximum theoretical visibility, taking into account topography, principal woodlands and buildings

A digital surface model (DSM) has been derived from Defra Survey LiDAR DTM, DSM Data height data. Locations of buildings have been taken from the OS Open Map Local dataset. Locations of woodland and vegetation higher than 2.5m have been taken from the Environment Agency's Vegetation Object Model dataset. Heights of buildings, woodland and vegetation have been taken from LiDAR DSM height data.

The actual extent of visibility on the ground will be less than that suggested by this plan.

The ZTV includes an adjustment that allows for Earth's curvature and light refraction. It is based on a derived DSM and has a 5m sq resolution.

Figure 11.2a: Solar PV Modules ZTV – Area B

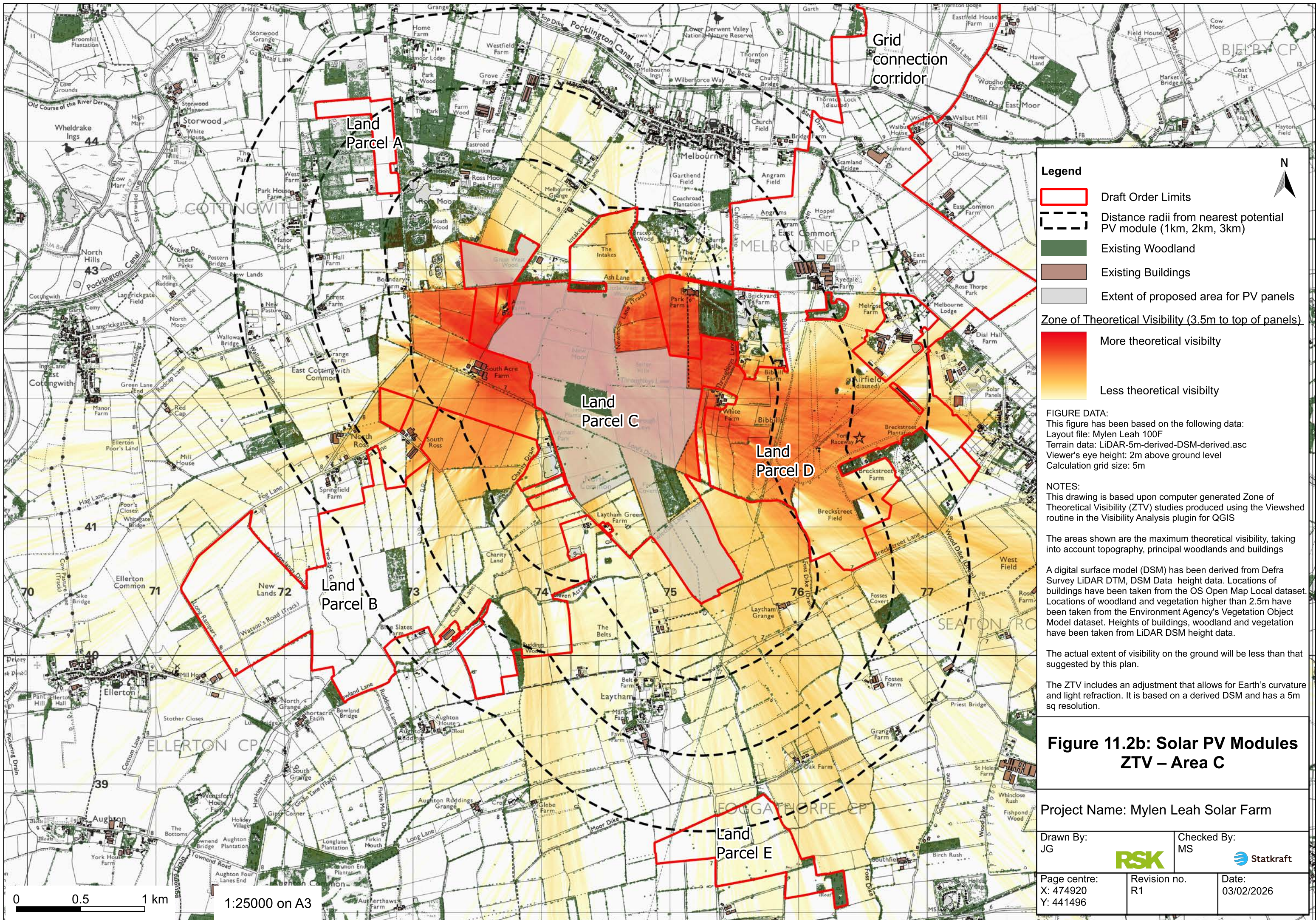
Project Name: Mylen Leah Solar Farm

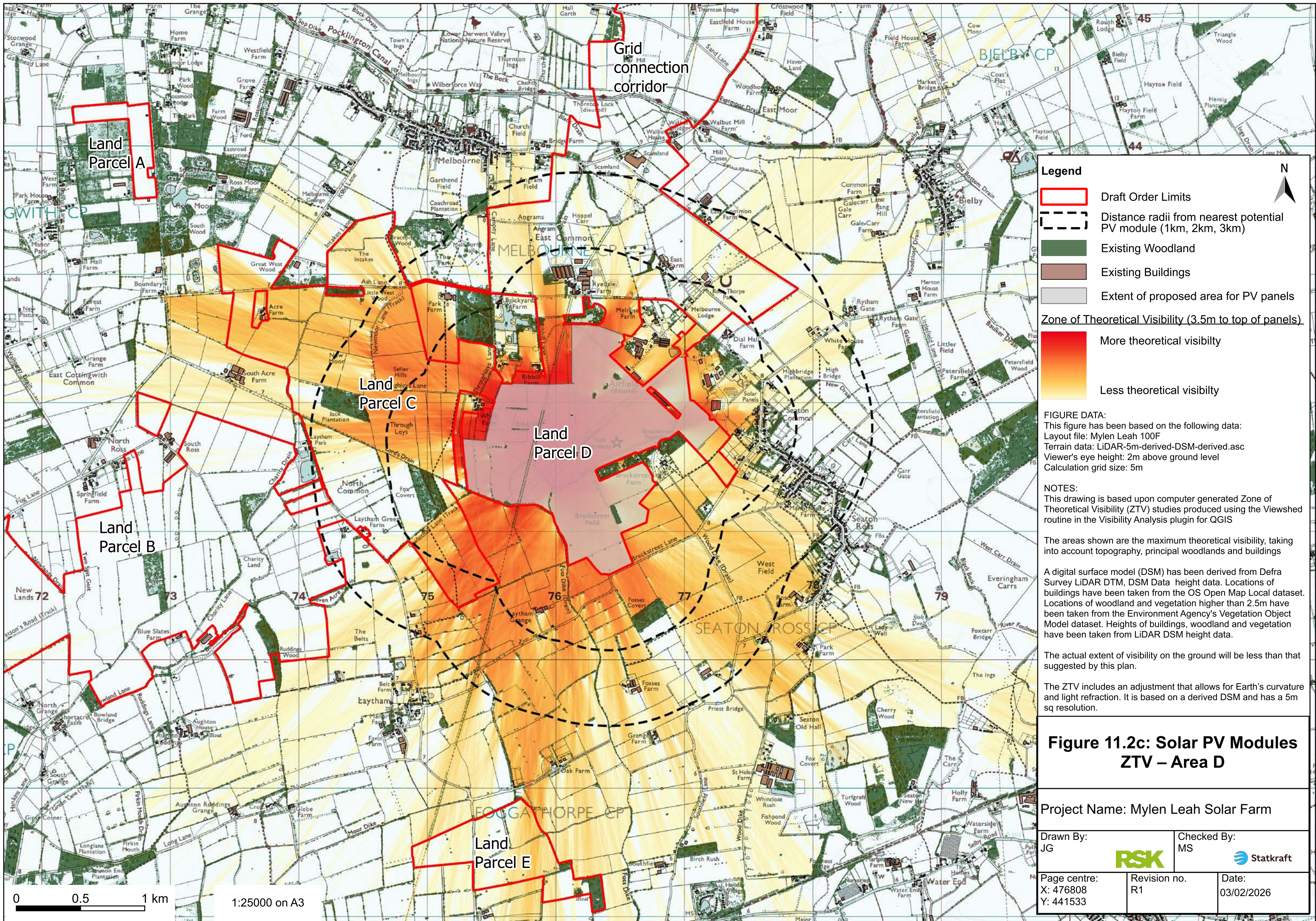
Drawn By: JG	Checked By: MS
-----------------	-------------------



Page centre: X: 474100 Y: 440738	Revision no. R1	Date: 03/02/2026
--	--------------------	---------------------

0 0.5 1 km 1:25000 on A3





Legend

- Draft Order Limits
- Distance radii from nearest potential PV module (1km, 2km, 3km)
- Existing Woodland
- Existing Buildings
- Extent of proposed area for PV panels

Zone of Theoretical Visibility (3.5m to top of panels)

- More theoretical visibility
- Less theoretical visibility

FIGURE DATA:
 This figure has been based on the following data:
 Layout file: Mylen Leah 100F
 Terrain data: LiDAR-5m-derived-DSM-derived.asc
 Viewer's eye height: 2m above ground level
 Calculation grid size: 5m

NOTES:
 This drawing is based upon computer generated Zone of Theoretical Visibility (ZTV) studies produced using the Viewshed routine in the Visibility Analysis plugin for QGIS

The areas shown are the maximum theoretical visibility, taking into account topography, principal woodlands and buildings

A digital surface model (DSM) has been derived from Defra Survey LiDAR DTM, DSM Data height data. Locations of buildings have been taken from the OS Open Map Local dataset. Locations of woodland and vegetation higher than 2.5m have been taken from the Environment Agency's Vegetation Object Model dataset. Heights of buildings, woodland and vegetation have been taken from LiDAR DSM height data.

The actual extent of visibility on the ground will be less than that suggested by this plan.

The ZTV includes an adjustment that allows for Earth's curvature and light refraction. It is based on a derived DSM and has a 5m sq resolution.

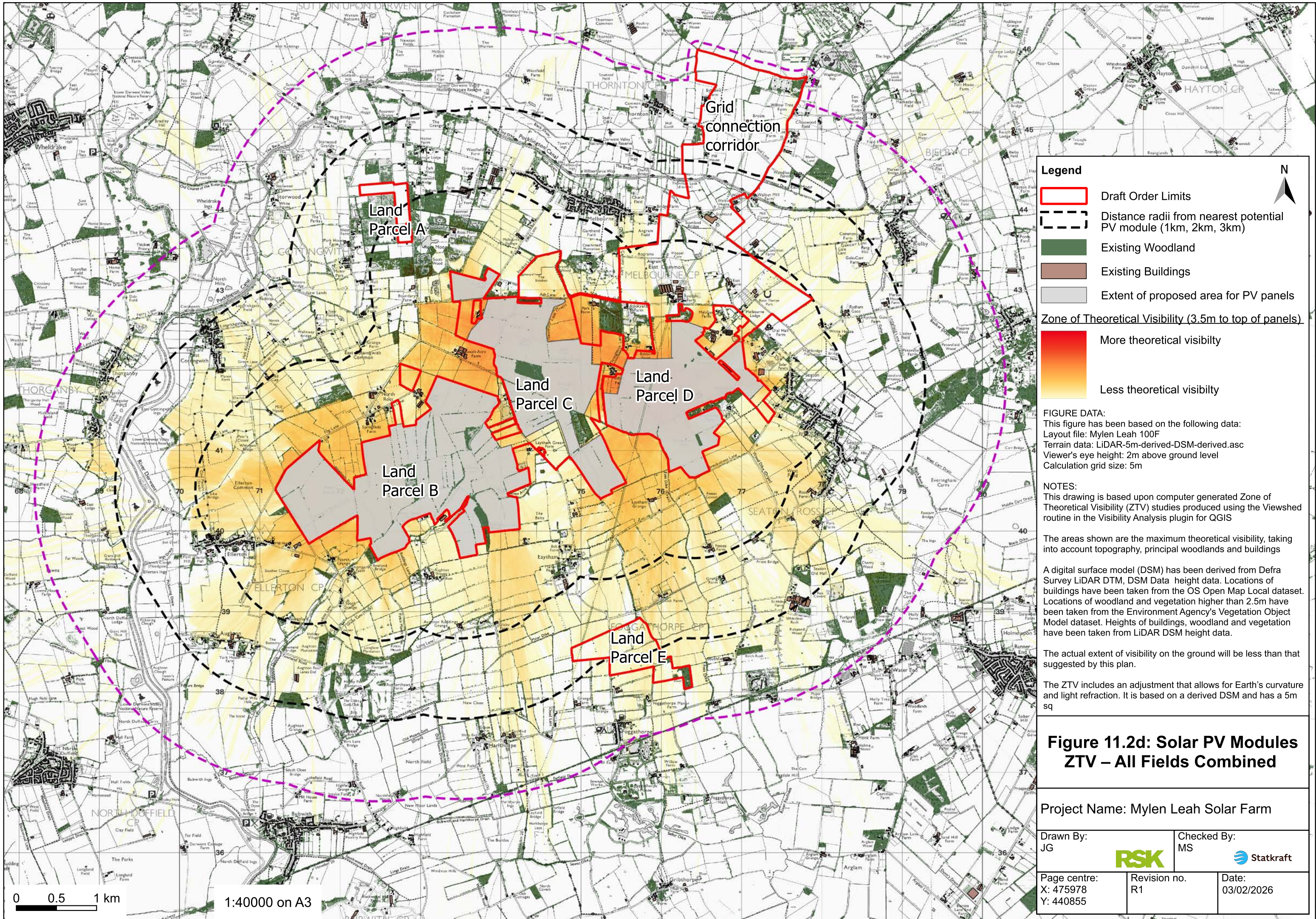
Figure 11.2c: Solar PV Modules ZTV – Area D

Project Name: Mylen Leah Solar Farm

Drawn By: JG	Checked By: MS

Page centre: X: 476808 Y: 441533	Revision no. R1	Date: 03/02/2026
--	--------------------	---------------------

0 0.5 1 km 1:25000 on A3



Legend

- Draft Order Limits
- Distance radii from nearest potential PV module (1km, 2km, 3km)
- Existing Woodland
- Existing Buildings
- Extent of proposed area for PV panels

Zone of Theoretical Visibility (3.5m to top of panels)

- More theoretical visibility
- Less theoretical visibility

FIGURE DATA:
 This figure has been based on the following data:
 Layout file: Mylen Leah 100F
 Terrain data: LiDAR-5m-derived-DSM-derived.asc
 Viewer's eye height: 2m above ground level
 Calculation grid size: 5m

NOTES:
 This drawing is based upon computer generated Zone of Theoretical Visibility (ZTV) studies produced using the Viewshed routine in the Visibility Analysis plugin for QGIS

The areas shown are the maximum theoretical visibility, taking into account topography, principal woodlands and buildings

A digital surface model (DSM) has been derived from Defra Survey LiDAR DTM, DSM Data height data. Locations of buildings have been taken from the OS Open Map Local dataset. Locations of woodland and vegetation higher than 2.5m have been taken from the Environment Agency's Vegetation Object Model dataset. Heights of buildings, woodland and vegetation have been taken from LiDAR DSM height data.

The actual extent of visibility on the ground will be less than that suggested by this plan.

The ZTV includes an adjustment that allows for Earth's curvature and light refraction. It is based on a derived DSM and has a 5m sq

Figure 11.2d: Solar PV Modules ZTV – All Fields Combined

Project Name: Mylen Leah Solar Farm

Drawn By: JG	Checked By: MS

Page centre: X: 475978 Y: 440855	Revision no. R1	Date: 03/02/2026
--	--------------------	---------------------

0 0.5 1 km 1:40000 on A3