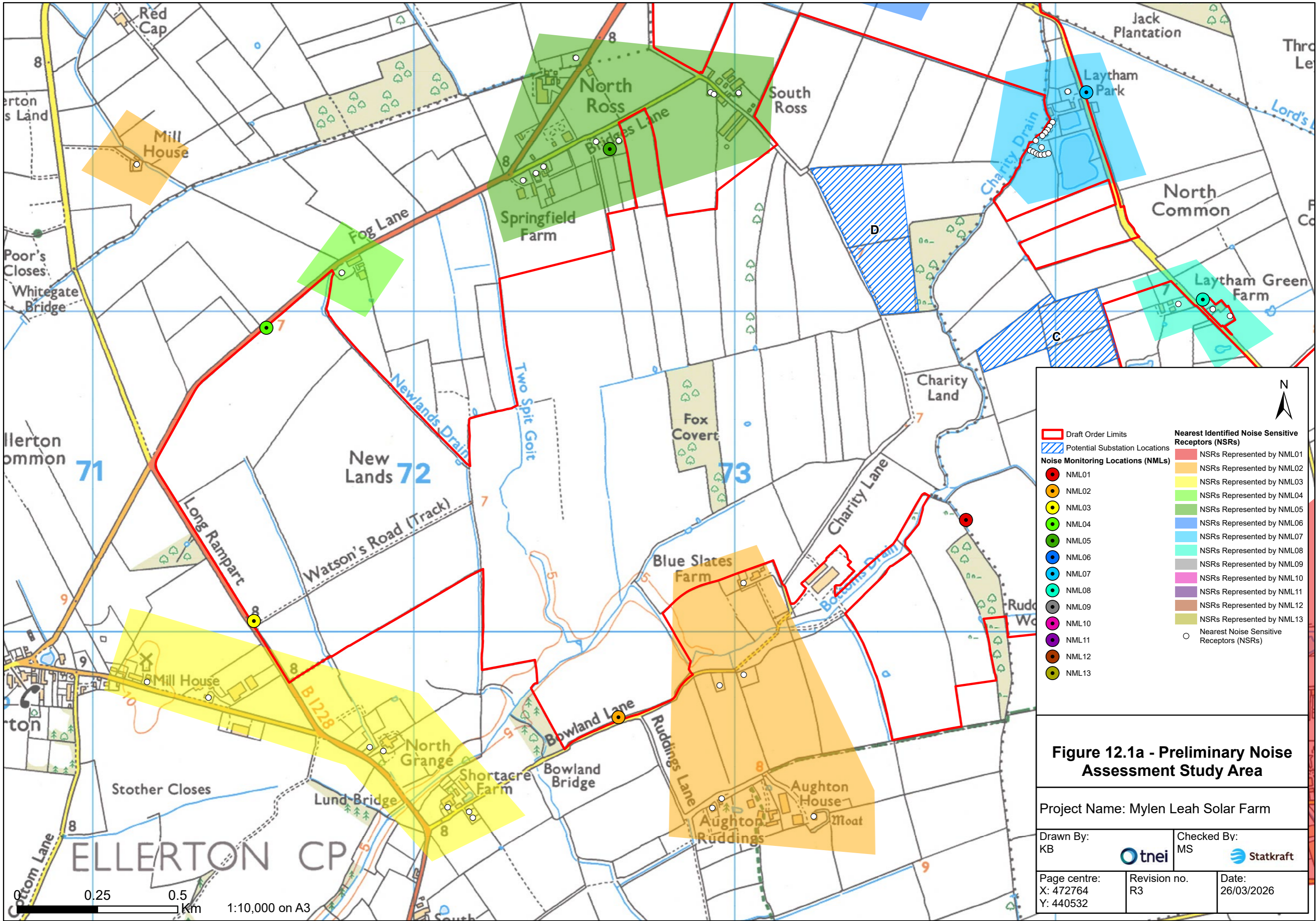


Legend

- Draft Order Limits
- Potential Substation Locations
- Noise Monitoring Locations (NMLs)**
- NML01
- NML02
- NML03
- NML04
- NML05
- NML06
- NML07
- NML08
- NML09
- NML10
- NML11
- NML12
- NML13
- NSRs Represented by NML01
- NSRs Represented by NML02
- NSRs Represented by NML03
- NSRs Represented by NML04
- NSRs Represented by NML05
- NSRs Represented by NML06
- NSRs Represented by NML07
- NSRs Represented by NML08
- NSRs Represented by NML09
- NSRs Represented by NML10
- NSRs Represented by NML11
- NSRs Represented by NML12
- NSRs Represented by NML13
- Nearest Noise Sensitive Receptors (NSRs)

Figure 12.1 - Preliminary Noise Assessment Study Area

Project Name: Mylen Leah Solar Farm	
Drawn By: KB	Checked By: MS
Page centre: X: 476802 Y: 441917	Revision no. R3
Date: 26/03/2026	

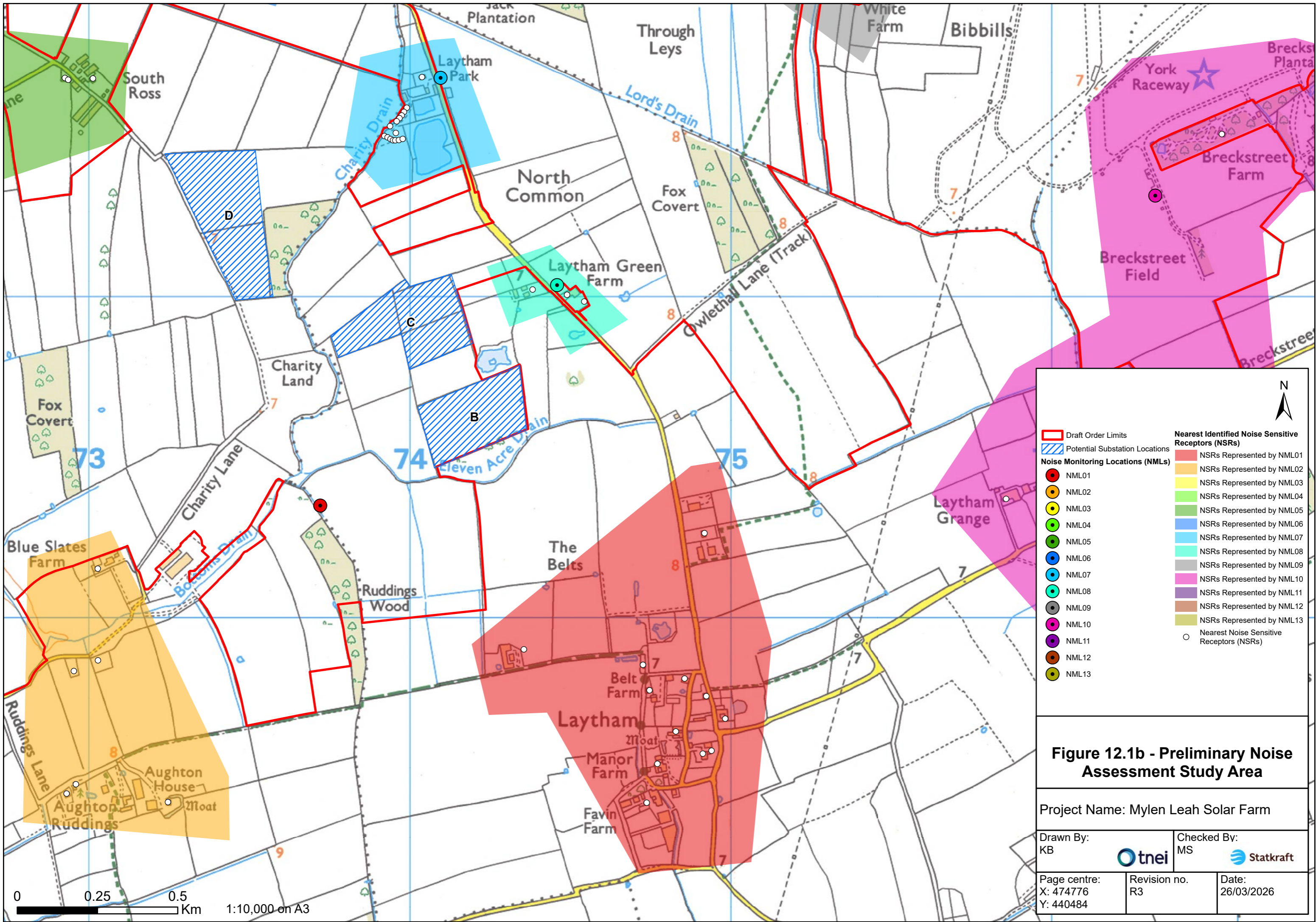


Legend

- Draft Order Limits
- Potential Substation Locations
- Noise Monitoring Locations (NMLs)**
 - NML01
 - NML02
 - NML03
 - NML04
 - NML05
 - NML06
 - NML07
 - NML08
 - NML09
 - NML10
 - NML11
 - NML12
 - NML13
- Nearest Identified Noise Sensitive Receptors (NSRs)**
 - NSRs Represented by NML01
 - NSRs Represented by NML02
 - NSRs Represented by NML03
 - NSRs Represented by NML04
 - NSRs Represented by NML05
 - NSRs Represented by NML06
 - NSRs Represented by NML07
 - NSRs Represented by NML08
 - NSRs Represented by NML09
 - NSRs Represented by NML10
 - NSRs Represented by NML11
 - NSRs Represented by NML12
 - NSRs Represented by NML13
 - Nearest Noise Sensitive Receptors (NSRs)

Figure 12.1a - Preliminary Noise Assessment Study Area

Project Name: Mylen Leah Solar Farm	
Drawn By: KB	Checked By: MS
Page centre: X: 472764 Y: 440532	Revision no. R3
Date: 26/03/2026	

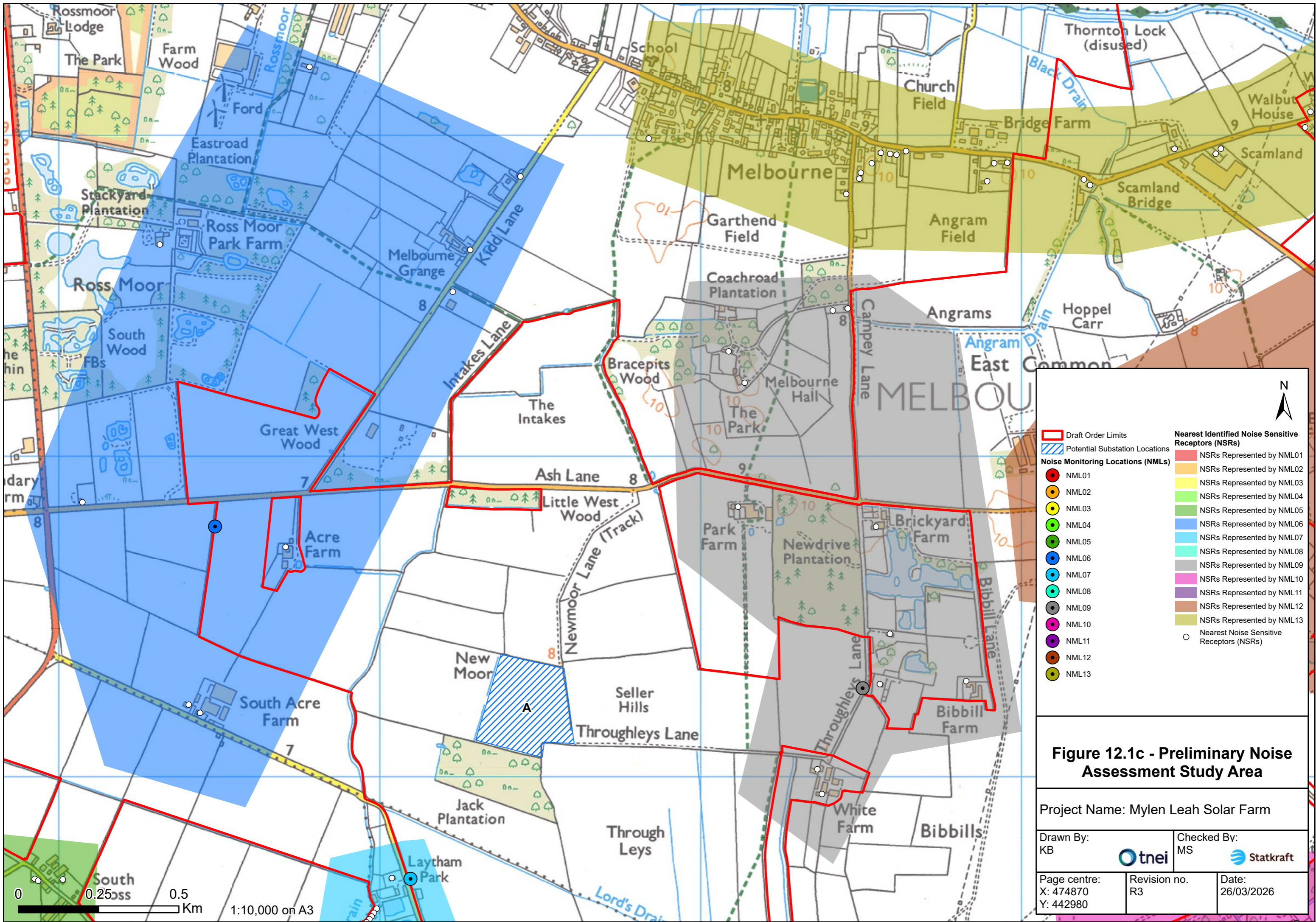


Draft Order Limits	NSRs Represented by NML01
Potential Substation Locations	NSRs Represented by NML02
Noise Monitoring Locations (NMLs)	NSRs Represented by NML03
NML01	NSRs Represented by NML04
NML02	NSRs Represented by NML05
NML03	NSRs Represented by NML06
NML04	NSRs Represented by NML07
NML05	NSRs Represented by NML08
NML06	NSRs Represented by NML09
NML07	NSRs Represented by NML10
NML08	NSRs Represented by NML11
NML09	NSRs Represented by NML12
NML10	NSRs Represented by NML13
NML11	Nearest Noise Sensitive Receptors (NSRs)
NML12	
NML13	

Figure 12.1b - Preliminary Noise Assessment Study Area

Project Name: Mylen Leah Solar Farm

Drawn By: KB	Checked By: MS
Page centre: X: 474776 Y: 440484	Revision no. R3
	Date: 26/03/2026

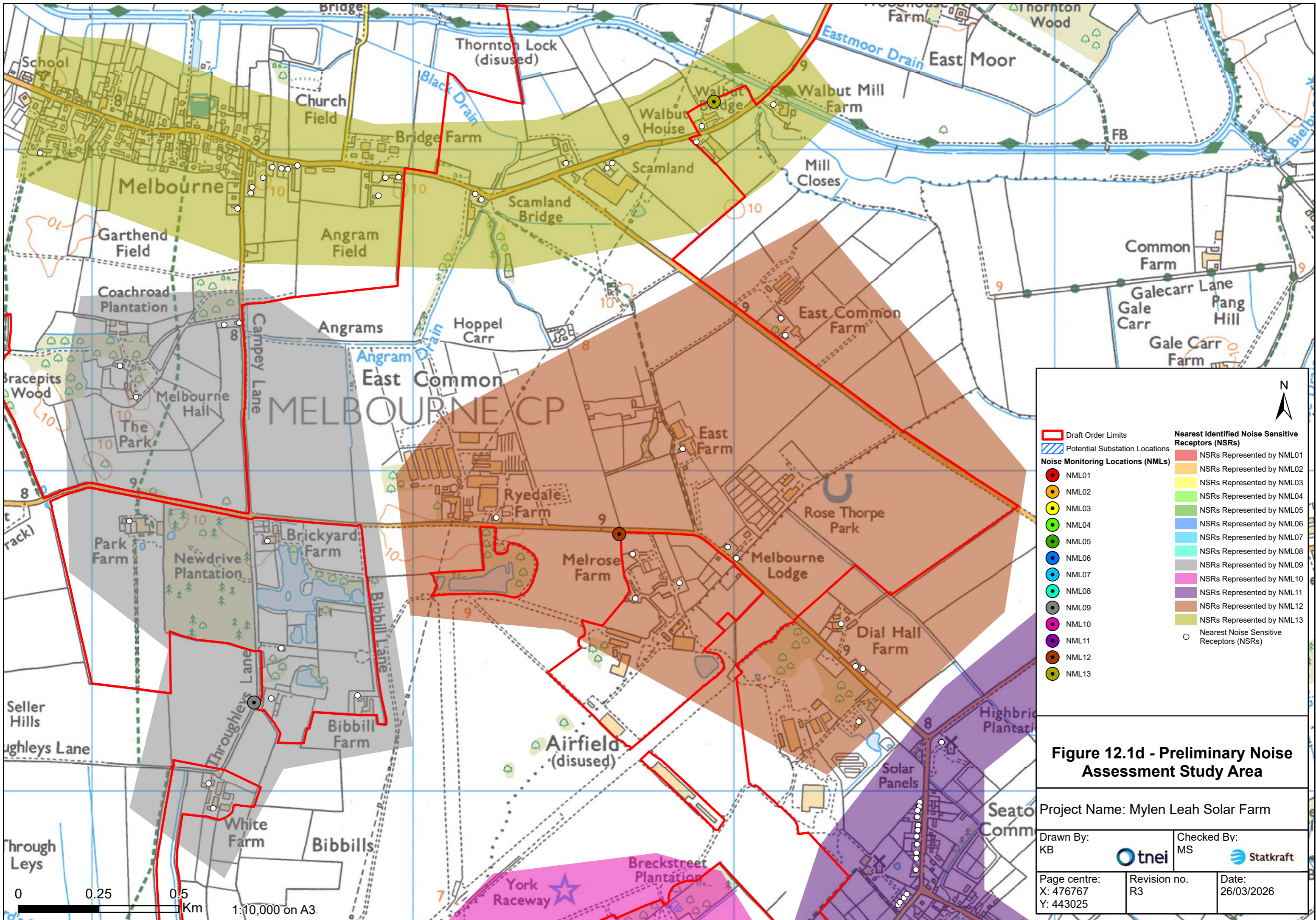


Legend

- Draft Order Limits
- Potential Substation Locations
- Noise Monitoring Locations (NMLs)**
 - NML01
 - NML02
 - NML03
 - NML04
 - NML05
 - NML06
 - NML07
 - NML08
 - NML09
 - NML10
 - NML11
 - NML12
 - NML13
- Nearest Identified Noise Sensitive Receptors (NSRs)**
 - NSRs Represented by NML01
 - NSRs Represented by NML02
 - NSRs Represented by NML03
 - NSRs Represented by NML04
 - NSRs Represented by NML05
 - NSRs Represented by NML06
 - NSRs Represented by NML07
 - NSRs Represented by NML08
 - NSRs Represented by NML09
 - NSRs Represented by NML10
 - NSRs Represented by NML11
 - NSRs Represented by NML12
 - NSRs Represented by NML13
 - Nearest Noise Sensitive Receptors (NSRs)

Figure 12.1c - Preliminary Noise Assessment Study Area

Project Name: Mylen Leah Solar Farm		
Drawn By: KB	Checked By: MS	
Page centre: X: 474870 Y: 442980	Revision no. R3	Date: 26/03/2026

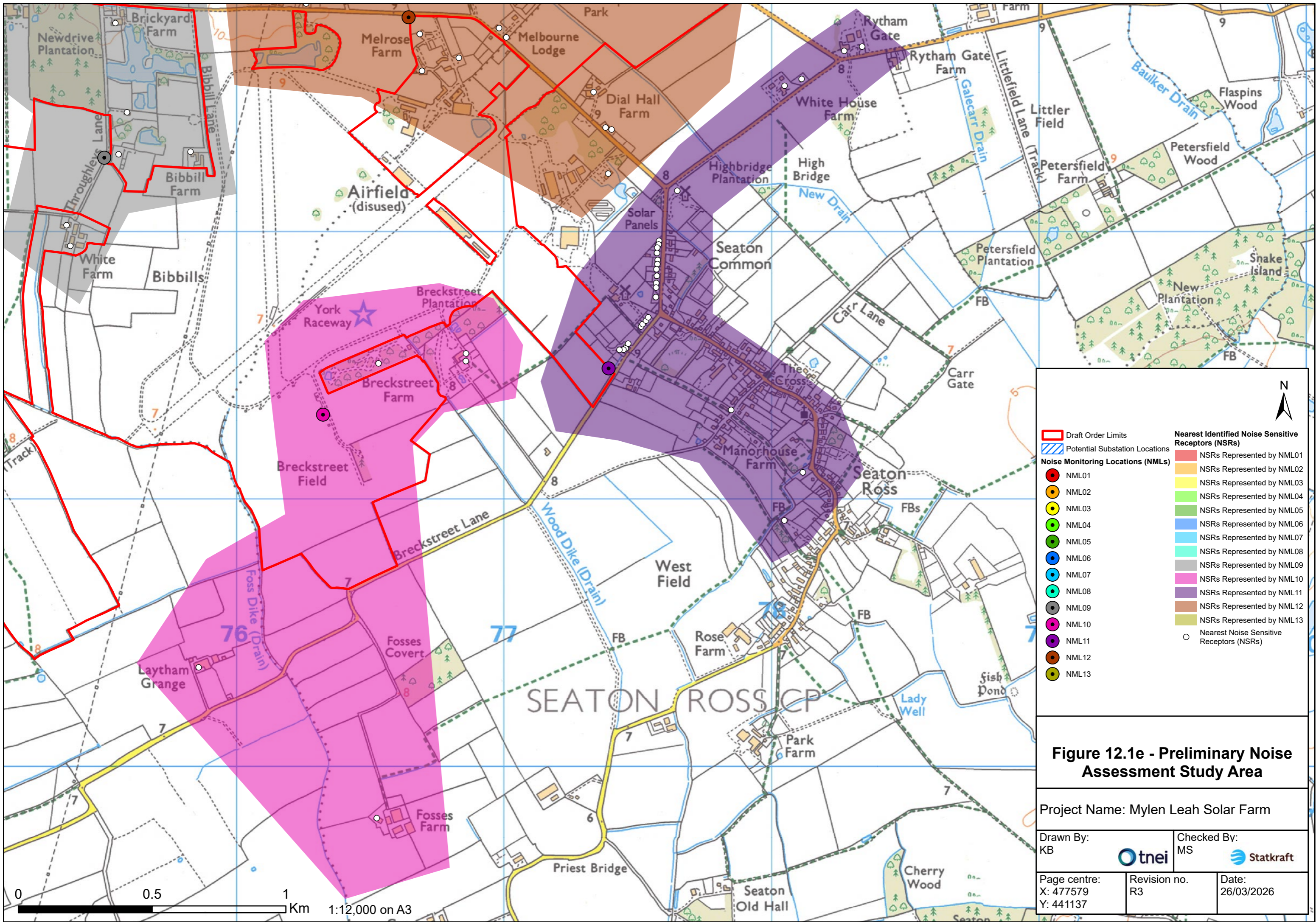


Legend

- Draft Order Limits
- Potential Substation Locations
- Noise Monitoring Locations (NMLs)**
 - NML01
 - NML02
 - NML03
 - NML04
 - NML05
 - NML06
 - NML07
 - NML08
 - NML09
 - NML10
 - NML11
 - NML12
 - NML13
- Nearest Identified Noise Sensitive Receptors (NSRs)**
 - NSRs Represented by NML01
 - NSRs Represented by NML02
 - NSRs Represented by NML03
 - NSRs Represented by NML04
 - NSRs Represented by NML05
 - NSRs Represented by NML06
 - NSRs Represented by NML07
 - NSRs Represented by NML08
 - NSRs Represented by NML09
 - NSRs Represented by NML10
 - NSRs Represented by NML11
 - NSRs Represented by NML12
 - NSRs Represented by NML13
 - Nearest Noise Sensitive Receptors (NSRs)

Figure 12.1d - Preliminary Noise Assessment Study Area

Project Name: Mylen Leah Solar Farm		
Drawn By: KB	Checked By: MS	
Page centre: X: 476767 Y: 443025	Revision no. R3	Date: 26/03/2026



- Draft Order Limits**
- [Red outline] Draft Order Limits
- Potential Substation Locations**
- [Blue hatched box] Potential Substation Locations
- Noise Monitoring Locations (NMLs)**
- [Red circle] NML01
 - [Orange circle] NML02
 - [Yellow circle] NML03
 - [Light green circle] NML04
 - [Green circle] NML05
 - [Blue circle] NML06
 - [Cyan circle] NML07
 - [Teal circle] NML08
 - [Light blue circle] NML09
 - [Pink circle] NML10
 - [Purple circle] NML11
 - [Brown circle] NML12
 - [Olive circle] NML13
- Nearest Identified Noise Sensitive Receptors (NSRs)**
- [Red box] NSRs Represented by NML01
 - [Orange box] NSRs Represented by NML02
 - [Yellow box] NSRs Represented by NML03
 - [Light green box] NSRs Represented by NML04
 - [Green box] NSRs Represented by NML05
 - [Blue box] NSRs Represented by NML06
 - [Cyan box] NSRs Represented by NML07
 - [Teal box] NSRs Represented by NML08
 - [Light blue box] NSRs Represented by NML09
 - [Pink box] NSRs Represented by NML10
 - [Purple box] NSRs Represented by NML11
 - [Brown box] NSRs Represented by NML12
 - [Olive box] NSRs Represented by NML13
 - [White circle] Nearest Noise Sensitive Receptors (NSRs)

0 0.5 1 Km 1:12,000 on A3