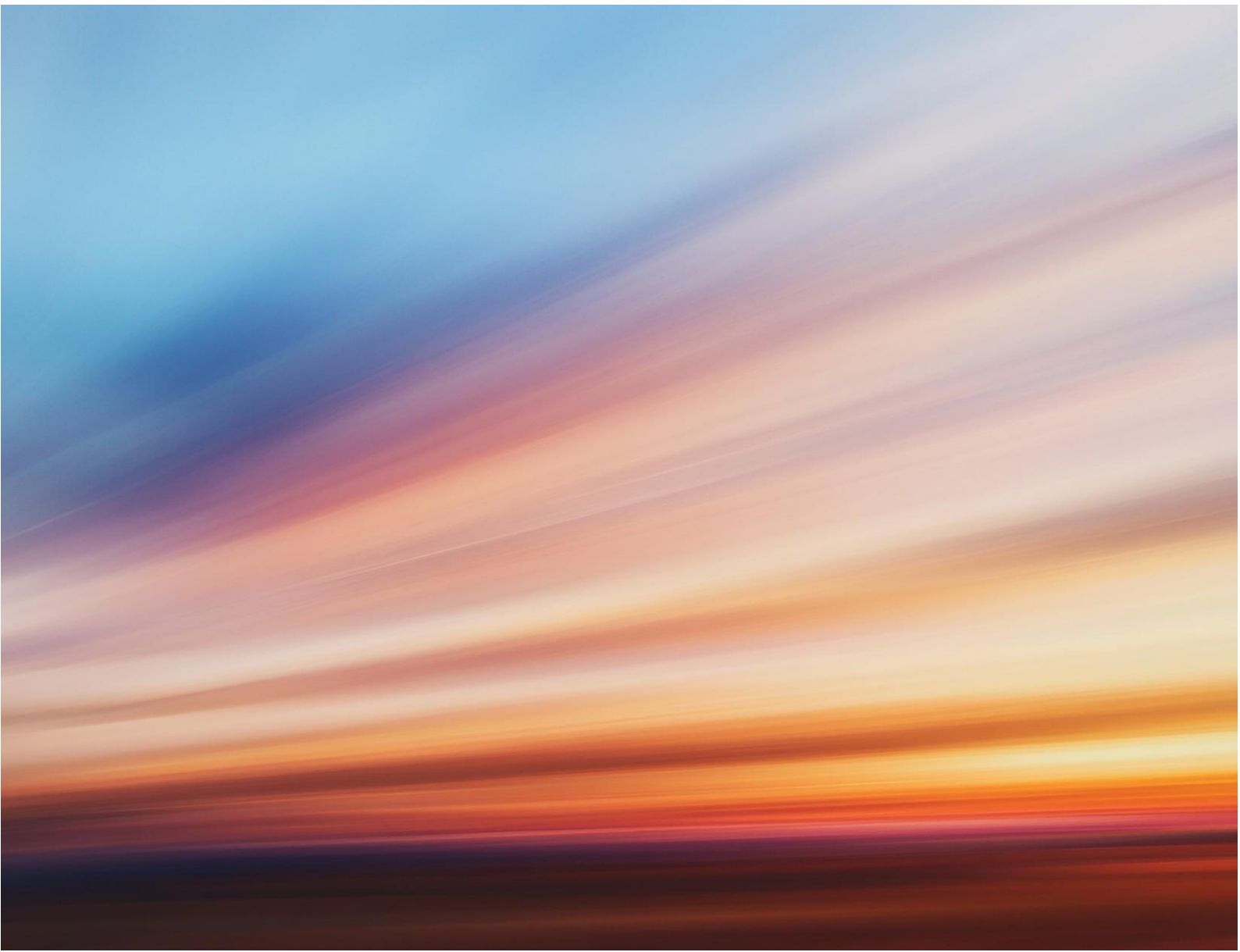


**Mylen Leah Solar Farm**  
**Preliminary Environmental**  
**Information Report**  
**Volume 3**  
**Appendix 11.3: Landscape**  
**Sensitivity Appraisal**

April 2026



# Contents

1. Introduction..... 1

## 1. Introduction

- 1.1.1 This appendix considers the sensitivity of landscape character within the study area of Mylen Leah Solar Farm. The concluding judgements regarding landscape sensitivity are carried through into the preliminary assessment of effects presented in **Chapter 11: Landscape and Visual** in **Volume 1**.
- 1.1.2 In the context of Landscape and Visual Impact Assessment (LVIA), landscape sensitivity as described in paragraph 5.39 of Guidelines for Landscape and Visual Impact Assessment (GLVIA3<sup>1</sup>) is not absolute and is specific to each development and its location. To assess the sensitivity of a particular landscape, it is good practice to consider the value attached to the landscape and its susceptibility to the particular type of change likely to result from the specific development under consideration.
- 1.1.3 The appraisal of sensitivity in this appendix draws upon observations contained within Natural England's National Character Area Profile 39 (NCA 39) Humberhead Levels<sup>2</sup> and NCA 28 Vale of York<sup>3</sup>, and the East Riding of Yorkshire Landscape Character Assessment<sup>4</sup> as summarised in **Appendix 11.2: Extracts from Published Landscape Character Assessments** in **Volume 3**; as well as observations made in the field during the baseline assessment of landscape character. Where relevant, extracts from the two documents above are reproduced in the appraisal below (in italics).
- 1.1.4 The landscape value criteria below are based on guidance contained within Landscape Institute Technical Guidance Note 02-21: Assessing Landscape Value Outside National Designations<sup>5</sup> : Assessing landscape value outside national designations; specifically Table 1 within that document.
- 1.1.5 With reference to the East Riding of Yorkshire Landscape Character Assessment, the majority of the above ground components of the Mylen Leah Solar Farm are located within Landscape Character Type (LCT) 6: Wooded Open Farmland and more specifically within Landscape Character Area (LCA) 6A: South of Pocklington Canal Wooded Farmland. A smaller portion of the above ground components also fall within LCT 5: Open Farmland and more specifically LCA 5B: West of Holme on Spalding Moor Farmland.
- 1.1.6 The underground grid connection corridor is situated across LCT 1: Flat Open Farmland and LCT 3: River/Canal Corridors, and more specifically across LCA 1C: Newton Upon Derwent, Wilberfoss, Allerthorpe and Hayton Farmland and LCA 3C: Pocklington Canal and Beck Corridor, respectively.
- 1.1.7 LCAs 6A and 5B are therefore considered to be 'host landscape character areas' and are considered in this PEIR. It has been determined that there would be no greater than a negligible effect on any other LCAs and therefore the appraisal of sensitivity in this appendix focuses solely on these two LCA.
- 1.1.8 It should be noted that LCA 5B extends considerably beyond the study area to the south; in contrast, LCA 6A contains the majority of Mylen Leah Solar Farm and does not extend much beyond 1-2km in all directions. Some of the descriptive text relating to the LCAs, in particular LCA 5B, in the East Riding of Yorkshire Landscape Character Assessment is therefore not considered

relevant and the discussion of landscape sensitivity below specifically focuses on the tract of the LCAs within the study area.

- 1.1.9 Part of the process of determining landscape sensitivity requires a judgement regarding the susceptibility of the LCA to the specific type of change likely to result from the specific development under consideration.
- 1.1.10 For the avoidance of doubt it should be noted that the sensitivity and capacity judgments presented in the East Riding of Yorkshire Landscape Character Assessment do not consider sensitivity to solar farm development and the constituent judgements regarding susceptibility cannot be extrapolated directly to form judgments in this PEIR. Where relevant, analysis in the East Riding of Yorkshire Landscape Character Assessment has been taken into account.
- 1.1.11 However, the judgements below relating to LCAs 6A and 5B specifically the type of development being a commercial scale ground mounted solar PV development. The location of the character areas in relation to the draft Order Limits can be seen on **Figure 11.4: Landscape Character in Volume 2.**

**Table 1.1: Host Landscape – LCA 6A South of Pocklington Canal Woodland**

Factors indicating sensitivity	Lower Sensitivity to Solar Development	Higher Sensitivity to Solar Development	Explanation	Judgement
<b>Value attached to Landscapes</b>				
Designated scenic quality	No specific designation.	National or regional designation.	Pockets of the LCA fall within the East Riding of Yorkshire Council Important Landscape Area that follows the Pocklington Canal.	Community
Natural Heritage	Low presence of ecological or geological/geomorphological interest.	High presence of ecological or geological/geomorphological interest.	There is one Site of Special Scientific Interest (SSSI) in the wider LCT (South Cliffe Common), however this is situated in the neighbouring LCA i.e. outside the study area. Additionally, <i>“There are a number of Local Wildlife Sites within the character area, including the two areas of ancient woodland, with some important ecological and habitat benefits”</i> .	Community
Cultural Heritage	Low presence of archaeology or historical interests.	High presence of archaeology or historical interests.	There are several Grade II listed assets in the LCA, with a particular concentration at Seaton Ross. The LCA also takes in the Grade II Melbourne Hall located south of the village of Melbourne.	Community
Landscape condition/quality	Landscape in a poor state of repair with incongruous elements.	Landscape fully intact in good condition with limited incongruous elements.	<i>“This is a medium to large scale landscape with a mix of grassland and arable land use. Hedgerows are generally in good condition with few gaps.”</i> (East Riding of Yorkshire Landscape Character Assessment)	Community

Factors indicating sensitivity	Lower Sensitivity to Solar Development	Higher Sensitivity to Solar Development	Explanation	Judgement
Cultural associations	No identified strong associations with notable people, events or the arts.	Strong cultural associations with notable people, events or the arts, which contribute to perceptions of natural beauty.	There are two Second World War airfields in the wider LCT, one of which is Melbourne Airfield (now home to Melbourne Raceway) which is situated in this LCA. Whilst there are other cultural associations, these are more relevant to the neighbouring LCA.	Community
Distinctiveness	Commonplace elements and features, or commonplace landscape itself. Lacking distinctive and strongly expressed character and with no important relationship to a settlement.	Presence of rare elements or features or rarity of the landscape itself. Landscape with a distinctive and clearly expressed character and/or with an important relationship to a settlement.	“Good to ordinary in quality” with a “strong sense of place as a result of the plantations, the settlement pattern and field pattern” (East Riding of Yorkshire Landscape Character Assessment).	Regional
Amenity and recreation	Limited access and/or amenity/recreational function where experience of the landscape is important.	Well used for recreation where experience of the landscape is important; or forms part of a view that is important to a recreational	The LCT has some public rights of way (PRoW), particularly around Seaton Ross, within the study area. There is poor connectivity for PRoW across the wider landscape.  There is a permissive right of way in the form of the dismantled Market Weighton to Selby railway line,	Community

Factors indicating sensitivity	Lower Sensitivity to Solar Development	Higher Sensitivity to Solar Development	Explanation	Judgement
		experience. May contain National Trails or other long distance routes.	however it only passes through this LCA to a small extent at its southeast.  York Model Boat Club is located at Laytham Park Lake.	
Perceptual (Scenic)	Landscape with no particular scenic/ visual appeal.	Landscape with strong appeal to the senses, particularly visual.	The landscape <i>“is attractive in parts”</i> (East Riding of Yorkshire Landscape Character Assessment) but would be unlikely to draw visitors for the specific purpose of experiencing the available views. The East Riding of Yorkshire Landscape Character Assessment identifies that there are some agricultural detractors in the LCT; the development of agricultural scattered farmsteads in the vicinity of Melbourne Airfield (York Raceway) is a visual detractor and this area is located within the Site boundary.  The East Riding of Yorkshire Landscape Character Assessment states that, in this LCT, <i>“Single development turbines and pylons are a visual detractor within the flat landscape”</i> however turbines look to be restricted to the southeast corner of this LCA, as well as to the neighbouring LCA.	Community
Perceptual (Wildness and Tranquillity)	Busy with evidence of human activity, well-lit.	Remote, peaceful or with a sense of wildness.	The East Riding of Yorkshire Landscape Character Assessment acknowledges that there are few roads in the wider LCT, which it considers to be isolated in nature: <i>“There is a strong rural character which is generally remote and tranquil”</i> .	Regional

Factors indicating sensitivity	Lower Sensitivity to Solar Development	Higher Sensitivity to Solar Development	Explanation	Judgement
Function	No important blue/green infrastructure function or important relationship with national landscape designation. Landscape on lower quality agricultural land.	Landscape with important blue/green infrastructure function or strong relationship that is important to a national landscape designation. Landscape on highest quality agricultural land.	<p>“Agricultural land Classification is mainly Grade 3, with a large area of Grade 4 east of Seaton Ross and some scattered areas of Grade 5.”</p> <p>There are drains and ditches running through the arable landscape with varying degrees of ecological interest. There is also a network of field edge ponds across the landscape. Blocks of woodland often not connected and field edges varied in quality.</p>	Community
<b>Overall Judgement of Value</b>				<b>Community</b>

<b>Susceptibility</b>				
Scale	Landscapes where scale of development is similar to or smaller than scale of receiving landscape.	Landscapes where scale of development is larger than scale of receiving landscape.	This LCA is a “ <i>medium to large scale landscape</i> ” (East Riding of Yorkshire Landscape Character Assessment) and therefore not incongruous to the scale of development.	Medium/Low
Landform	Smooth regular flowing, or uniform landscapes.	Dramatic and rugged landscapes.	Flat and expansive agricultural landscape.	Low

Mylen Leah Solar Farm

Factors indicating sensitivity	Lower Sensitivity to Solar Development	Higher Sensitivity to Solar Development	Explanation	Judgement
Openness/ enclosure	Enclosed and sheltered landscapes.	Open and exposed landscapes.	Open landscape, owing to its low lying, flat arable farmland. Flat nature of landscape results in vegetation being the main screening influence to views.	Medium
Land cover, complexity and patterns	Lower quality agricultural land, regular field patterns.	Higher quality agricultural land, complex and irregular field patterns.	In the wider LCT, there are “Hedgerow field boundaries highlighting landscape pattern that is a mix of regular and irregular field indicating the different phases of enclosure.” (East Riding of Yorkshire Landscape Character Assessment) It is also noted that where irregularity occurs, this applies to field size and pattern.	Medium
Built Environment	Contemporary masts, pylons, industrial elements, buildings infrastructure, settlements.	Established, traditional or historic built character.	Pylons, agricultural developments and scattered farmsteads are common features within the landscape. Villages tend to have historic cores. Melbourne Airfield has different feel to wider landscape due to increased openness, lack of field structure and the presence larger commercial and agricultural buildings.	Medium
Views and intervisibility	Visually contained and have limited inward or outward views.	Extensive views within or of the area with distant horizons.	There are open, expansive and long-distance views with vegetation forming the main screening effect due to flat nature of wider landscape	Medium
Landscapes that form settings, skylines,	Generally low lying landscapes without distinctive landform or horizon.	Areas with strong features, focal points that define the setting or skyline.	This is a low lying landscape with few features of note to contribute to a backdrop.	Low

Mylen Leah Solar Farm

Factors indicating sensitivity	Lower Sensitivity to Solar Development	Higher Sensitivity to Solar Development	Explanation	Judgement
backdrops, focal points				
<b>Overall Judgement of Susceptibility</b>				<b>Medium</b>

<b>Overall Judgement of Sensitivity (component judgements of value and susceptibility)</b>	<b>Medium/Low</b>
--	-------------------

**Table 1.2: Host Landscape – LCA 5B West of Holme on Spalding Moor Farmland**

Factors indicating sensitivity	Lower Sensitivity to Solar Development	Higher Sensitivity to Solar Development	Explanation	Judgement
<b>Value attached to Landscapes</b>				
Designated scenic quality	No specific designation.	National or regional designation.	No national, regional or local landscape designations.	Community
Natural Heritage	Low presence of ecological or geological/geomorphological interest.	High presence of ecological or geological/geomorphological interest.	One Special Protection Area (SPA) and Special Area of Conservation (SAC) (Lower Derwent Valley) and two SSSI are located in the wider LCT, none of which are within the study area in this LCA.	Community
Cultural Heritage	Low presence of archaeology or historical interests.	High presence of archaeology or historical interests.	Several sparsely distributed Grade II listed assets are located within the study area. There is a Scheduled Monument (Moated site at Chapelgarth) in close proximity to the Site boundary to the south.	Community
Landscape condition/quality	Landscape in a poor state of repair with incongruous elements.	Landscape fully intact in good condition with limited incongruous elements.	East Riding of Yorkshire Landscape Character Assessment states that the landscape has been subject to fragmentation, the main cause of which has been “... <i>intensive farming practices that resulted in the loss of hedgerows and the creation of larger fields. Grassland has been converted to arable farmland and there has been relatively little woodland planting in the area.</i> ”	Community
Cultural associations	No strong associations with	Strong cultural associations with notable people,	The area has associations with the Aske family, a prominent Yorkshire family, which established a presence in Aughton in the 14 <sup>th</sup> century.	Regional

Factors indicating sensitivity	Lower Sensitivity to Solar Development	Higher Sensitivity to Solar Development	Explanation	Judgement
	notable people, events or the arts.	events or the arts, which contribute to perceptions of natural beauty.		
Distinctiveness	Commonplace elements and features, or commonplace landscape itself. Lacking distinctive and strongly expressed character and with no important relationship to a settlement.	Presence of rare elements or features or rarity of the landscape itself. Landscape with a distinctive and clearly expressed character and/or with an important relationship to a settlement.	The East Riding of Yorkshire Landscape Character Assessment states: "This is a large scale pleasant agricultural landscape with few features of note." It goes on to note: "There is little to distinguish the landscape character from similar areas nationwide."	Community
Amenity and recreation	Limited access and/ or amenity/ recreational function where experience of the landscape is important.	Well used for recreation where experience of the landscape is important; or forms part of a view that is important to a recreational experience. May contain National Trails or other long distance routes.	There is a network of PRow. There is also a permissive right of way in the form of the dismantled Market Weighton to Selby railway line. Within this LCA, this railway line route (FOGGB15) comes into close proximity to the Site boundary (within 1km) south of the A163 near Foggathorpe. To the south of Harlthorpe the railway line route (FOGGB14) also forms part of the Howden 20 recreational route, a 20-mile local long distance path starting and ending in Howden, which also falls within the study area.  <i>"The area around Foggathorpe contains a recreation and tourism development including man-made lakes</i>	Community

Factors indicating sensitivity	Lower Sensitivity to Solar Development	Higher Sensitivity to Solar Development	Explanation	Judgement
			<p><i>and log cabin accommodation. There are other similar small scale developments in this landscape.</i>" (East Riding of Yorkshire Landscape Character Assessment)</p> <p>Two golf courses in this LCA including The Oaks Golf Club near Aughton (within the study area). Yellowtop Country Park is located within 1km from the Site boundary.</p>	
Perceptual (Scenic)	Landscape with no particular scenic/ visual appeal.	Landscape with strong appeal to the senses, particularly visual.	<p>The landscape is not particularly scenic and it would not attract visitors for the specific purpose of experiencing the available views. The East Riding of Yorkshire Landscape Character Assessment identifies that there are some agricultural detractors in the LCT and that where these are present they are <i>"highly visible due to lack of trees and flat landform."</i> Pylons and wind turbines in the wider landscape are also identified in the East Riding of Yorkshire Landscape Character Assessment as a detracting element.</p>	Community
Perceptual (Wildness and Tranquillity)	Busy with evidence of human activity, well-lit.	Remote, peaceful or with a sense of wildness.	<p><i>"There is a strong rural character which is open, remote and rural."</i> (East Riding of Yorkshire Landscape Character Assessment)</p>	Regional
Function	No important blue/ green infrastructure	Landscape with important blue/ green	<p><i>"Agricultural Land Classification varies, predominantly Grade 3 with pockets of Grade 2, a large area of Grade 4..."</i></p>	Community

Factors indicating sensitivity	Lower Sensitivity to Solar Development	Higher Sensitivity to Solar Development	Explanation	Judgement
	function or important relationship with national landscape designation. Landscape on lower quality agricultural land.	infrastructure function or strong relationship that is important to a national landscape designation. Landscape on highest quality agricultural land.	<p>Network of drains and ditches run through the area many of which with limited ecological value. Some areas of woodland with poor connectivity through the landscape.</p> <p>Land to west of the LCA forms part of the floodplain landscape for the River Derwent, however this forms a small portion of the overall LCA.</p>	
<b>Overall Judgement of Value</b>				<b>Community</b>

<b>Susceptibility</b>				
Scale	Landscapes where scale of development is similar to or smaller than scale of receiving landscape.	Landscapes where scale of development is larger than scale of receiving landscape.	East Riding of Yorkshire Landscape Character Assessment states that this is a “ <i>large scale agricultural landscape</i> ”. This is not incongruous with the scale of Mylen Leah Solar Farm.	Medium/Low
Landform	Smooth regular flowing, or uniform landscapes.	Dramatic and rugged landscapes.	Flat and expansive agricultural landscape.	Low
Openness/ enclosure	Enclosed and sheltered landscapes.	Open and exposed landscapes.	The East Riding of Yorkshire Landscape Character Assessment discusses the openness of this landscape, with the sky dominating open views. Flat nature of landscape means that it is vegetation that	Medium

Factors indicating sensitivity	Lower Sensitivity to Solar Development	Higher Sensitivity to Solar Development	Explanation	Judgement
			forms any screening to views. Openness to adjacent LCA tends to be limited to areas within relatively close proximity.	
Land cover, complexity and patterns	Lower quality agricultural land, regular field patterns.	Higher quality agricultural land, complex and irregular field patterns.	The East Riding of Yorkshire Landscape Character Assessment states that <i>“Areas of less regular field patterns amongst the more rectilinear and regular fields that resulted from parliamentary enclosure are a relic of past farming activity.”</i>	Medium
Built Environment	Contemporary masts, pylons, industrial elements, buildings infrastructure, settlements.	Established, traditional or historic built character.	Pylons and large agricultural buildings are common features within the landscape. Villages tend to have historic core with local road network largely made up of traditional lanes. Low level development in adjacent LCA unlikely to have a notable influence over built environment	Medium/Low
Views and intervisibility	Visually contained and have limited inward or outward views.	Extensive views within or of the area with distant horizons.	<i>“Openness, long distance views over flat arable land”</i> (East Riding of Yorkshire Landscape Character Assessment). Vegetation forms screening function within the landscape and limits extent of visibility of adjacent character areas.	Medium
Landscapes that form settings, skylines, backdrops, focal points	Generally low lying landscapes without distinctive landform or horizon.	Areas with strong features, focal points that define the setting or skyline.	This LCA is a low lying landscape, lacking a distinctive landform and with few features of note to contribute to a backdrop.	Low

Myleh Leah Solar Farm

Factors indicating sensitivity	Lower Sensitivity to Solar Development	Higher Sensitivity to Solar Development	Explanation	Judgement
Overall Judgement of Susceptibility				Medium

Overall Judgement of Sensitivity (component judgements of value and susceptibility)	Medium/Low
---	------------

**Table 1.3: Host Landscape – LCA 3C Pocklington Canal and Beck Corridor**

Factors indicating sensitivity	Lower Sensitivity to Solar Development	Higher Sensitivity to Solar Development	Explanation	Judgement
<b>Value attached to Landscapes</b>				
Designated scenic quality	No specific designation.	National or regional designation.	The River Derwent Corridor, and the Lower Derwent Valley and Pocklington Canal are recognised as Important Landscape Areas. These areas were identified in the East Riding Local Plan.	Regional
Natural Heritage	Low presence of ecological or geological/geomorphological interest.	High presence of ecological or geological/geomorphological interest.	This part of River Derwent is one of the best examples in Britain of a river of this type. It is designated as a SSSI, SPA and SAC and support a diverse range of fauna and flora	National
Cultural Heritage	Low presence of archaeology or historical interests.	High presence of archaeology or historical interests.	Pocklington Canal and is of historical interest with three of the bridges that cross it listed as scheduled monuments.	Regional
Landscape condition/ quality	Landscape in a poor state of repair with incongruous elements.	Landscape fully intact in good condition with limited incongruous elements.	The canal itself is disused but as a result important for nature conservation	Regional
Cultural associations	No strong associations with notable people, events or the arts.	Strong cultural associations with notable people, events or the arts, which contribute to	LCT has association with battle of Stamford Bridge but this sits outside of LCA.	Community

Mylen Leah Solar Farm

Factors indicating sensitivity	Lower Sensitivity to Solar Development	Higher Sensitivity to Solar Development	Explanation	Judgement
		perceptions of natural beauty.		
Distinctiveness	Commonplace elements and features, or commonplace landscape itself. Lacking distinctive and strongly expressed character and with no important relationship to a settlement.	Presence of rare elements or features or rarity of the landscape itself. Landscape with a distinctive and clearly expressed character and/or with an important relationship to a settlement.	Canal corridor has quite a distinctive character but with limited association with any settlement within the LCA. There is a meandering beck running alongside it.	Regional
Amenity and recreation	Limited access and/ or amenity/ recreational function where experience of the landscape is important.	Well used for recreation where experience of the landscape is important; or forms part of a view that is important to a recreational experience. May contain National Trails or other long distance routes.	Pocklington Canal has the Wilberforce Way long distance path running along it. Angling available along River Derwent. Public right of way connectivity to wider landscape is more limited.	Regional

Factors indicating sensitivity	Lower Sensitivity to Solar Development	Higher Sensitivity to Solar Development	Explanation	Judgement
Perceptual (Scenic)	Landscape with no particular scenic/ visual appeal.	Landscape with strong appeal to the senses, particularly visual.	Canal route has a scenic appeal in part due to high ecological value.	Regional
Perceptual (Wildness and Tranquillity)	Busy with evidence of human activity, well-lit.	Remote, peaceful or with a sense of wildness.	The East Riding of Yorkshire Landscape Character Assessments states that <i>“There is a strong, unspoilt rural character which is generally remote and tranquil.”</i>	Regional
Function	No important blue/ green infrastructure function or important relationship with national landscape designation. Landscape on lower quality agricultural land.	Landscape with important blue/ green infrastructure function or strong relationship that is important to a national landscape designation. Landscape on highest quality agricultural land.	Pocklington Canal corridor feeds into River Derwent which is of national importance.	Regional
<b>Overall Judgement of Value</b>				<b>Regional</b>

Susceptibility				
Scale	Landscapes where scale of development is	Landscapes where scale of development is	Smaller scale field structure than surrounding landscape and more vegetated. Still part of wider more expansive landscape.	Medium

## Mylen Leah Solar Farm

Factors indicating sensitivity	Lower Sensitivity to Solar Development	Higher Sensitivity to Solar Development	Explanation	Judgement
	similar to or smaller than scale of receiving landscape.	larger than scale of receiving landscape.		
Landform	Smooth regular flowing, or uniform landscapes.	Dramatic and rugged landscapes.	Flat landscape, The canal form a north / south barrier in the landscape connecting westwards into the Derwent	Low
Openness/ enclosure	Enclosed and sheltered landscapes.	Open and exposed landscapes.	Relatively open but stronger field edge boundaries than adjacent landscape.	Medium/Low
Land cover, complexity and patterns	Lower quality agricultural land, regular field patterns.	Higher quality agricultural land, complex and irregular field patterns.	Grade 3 and 4 agricultural landscape classification, smaller fields.	Medium/Low
Built Environment	Contemporary masts, pylons, industrial elements, buildings infrastructure, settlements.	Established, traditional or historic built character.	Built form based around passage of canal through LCA so landscape more traditional in structure, relates to Melbourne in the south. Some pylons and wind turbines visible in wider landscape.	Medium
Views and intervisibility	Visually contained and have limited inward or outward views.	Extensive views within or of the area with distant horizons.	Landscape is relatively open with views filtered and contained by surrounding vegetation. Limited visibility into adjacent LCA.	Medium Low

Mysten Leah Solar Farm

Factors indicating sensitivity	Lower Sensitivity to Solar Development	Higher Sensitivity to Solar Development	Explanation	Judgement
Landscapes that form settings, skylines, backdrops, focal points	Generally low lying landscapes without distinctive landform or horizon.	Areas with strong features, focal points that define the setting or skyline.	Low lying flat landscape comparable to other similar landscapes in wider area.	Low
<b>Overall Judgement of Susceptibility</b>				<b>Medium</b>
<b>Overall Judgement of Sensitivity (component judgements of value and susceptibility)</b>				<b>Medium</b>

**Table 04: Host Landscape – LCA 1C – Newton Upon Derwent, Wilberfloss, Allerthorpe and Hayton Farmland**

Factors indicating sensitivity	Lower Sensitivity to Solar Development	Higher Sensitivity to Solar Development	Explanation	Judgement
<b>Value attached to Landscapes</b>				
Designated scenic quality	No specific designation.	National or regional designation.	No scenic designations within character area other than small pockets within adjacent Important Landscape Area.	Community
Natural Heritage	Low presence of ecological or geological/ geomorphological interest.	High presence of ecological or geological/ geomorphological interest.	Lower Derwent Valley is National Nature Reserve, SPA, SSSI and RAMSAR.	National
Cultural Heritage	Low presence of archaeology or historical interests.	High presence of archaeology or historical interests.	Several conservation areas within LCT. A1079 follows route of Roman Road.	Regional
Landscape condition/ quality	Landscape in a poor state of repair with incongruous elements.	Landscape fully intact in good condition with limited incongruous elements.	Generally flat, intensive farmland with sparse woodland cover and a mix of linear and nucleated villages.	Community
Cultural associations	No strong associations with notable people, events or the arts.	Strong cultural associations with notable people, events or the arts, which contribute to	LCT has associations with St Everilda (a 7 <sup>th</sup> century saint) and the Constable family (family linked to Everington with significant lands who built what is now St Mary & St Everilda).	Community

Factors indicating sensitivity	Lower Sensitivity to Solar Development	Higher Sensitivity to Solar Development	Explanation	Judgement
		perceptions of natural beauty.		
Distinctiveness	Commonplace elements and features, or commonplace landscape itself. Lacking distinctive and strongly expressed character and with no important relationship to a settlement.	Presence of rare elements or features or rarity of the landscape itself. Landscape with a distinctive and clearly expressed character and/or with an important relationship to a settlement.	Predominantly agricultural land with along with an area of common land located at Allerthorpe.	Community
Amenity and recreation	Limited access and/ or amenity/ recreational function where experience of the landscape is important.	Well used for recreation where experience of the landscape is important; or forms part of a view that is important to a recreational experience. May contain National Trails or other long distance routes.	Limited opportunities for PRow with poor connectivity through the area. Parking at Allerthorpe Common to access woodland.	Community

Factors indicating sensitivity	Lower Sensitivity to Solar Development	Higher Sensitivity to Solar Development	Explanation	Judgement
Perceptual (Scenic)	Landscape with no particular scenic/ visual appeal.	Landscape with strong appeal to the senses, particularly visual.	East Riding of Yorkshire Landscape Character Assessment states that <i>"Fragmented by development encroaching on rural landscape with pylons communications and transport infrastructure detracting from the scenic quality."</i>	Community
Perceptual (Wildness and Tranquillity)	Busy with evidence of human activity, well-lit.	Remote, peaceful or with a sense of wildness.	East Riding of Yorkshire Landscape Character Assessment states that <i>"Generally open and rural the LCA has at relatively remote and tranquil character"</i> .	Regional
Function	No important blue/ green infrastructure function or important relationship with national landscape designation. Landscape on lower quality agricultural land.	Landscape with important blue/ green infrastructure function or strong relationship that is important to a national landscape designation. Landscape on highest quality agricultural land.	Some important green infrastructure around River Derwent and at Allerthorpe Wood. Series of ditches and drains running through landscape.	Regional
<b>Overall Judgement of Value</b>				<b>Regional/Community</b>

**Susceptibility**

Factors indicating sensitivity	Lower Sensitivity to Solar Development	Higher Sensitivity to Solar Development	Explanation	Judgement
Scale	Landscapes where scale of development is similar to or smaller than scale of receiving landscape.	Landscapes where scale of development is larger than scale of receiving landscape.	Large scale open landscape, wind turbines spread through north of LCT.	Low
Landform	Smooth regular flowing, or uniform landscapes.	Dramatic and rugged landscapes.	Flat, relatively open farmland.	Low
Openness/ enclosure	Enclosed and sheltered landscapes.	Open and exposed landscapes.	Relatively open with vegetation forming main screen to longer views, limited interaction with adjacent LCA.	Medium
Land cover, complexity and patterns	Lower quality agricultural land, regular field patterns.	Higher quality agricultural land, complex and irregular field patterns.	East Riding of Yorkshire Landscape Character Assessment states that <i>“Patchwork of generally rectangular fields in a sub regular pattern.”</i>	Medium/Low
Built Environment	Contemporary masts, pylons, industrial elements, buildings infrastructure, settlements.	Established, traditional or historic built character.	East Riding of Yorkshire Landscape Character Assessment states that <i>“LCA centred on the villages of Newton upon Derwent, Wilberfoss and Allerthorpe”</i> . Character of built environment unlikely to be influenced by low level development in adjacent LCA.	Low

Factors indicating sensitivity	Lower Sensitivity to Solar Development	Higher Sensitivity to Solar Development	Explanation	Judgement
Views and intervisibility	Visually contained and have limited inward or outward views.	Extensive views within or of the area with distant horizons.	Rural character that is generally open in nature. Flat nature of landscape results in vegetation providing screening to longer views to adjacent LCA.	Medium/Low
Landscapes that form settings, skylines, backdrops, focal points	Generally low lying landscapes without distinctive landform or horizon.	Areas with strong features, focal points that define the setting or skyline.	Low lying flat landscape typical of the wider area.	Low
<b>Overall Judgement of Susceptibility</b>				<b>Medium/Low</b>
<b>Overall Judgement of Sensitivity (component judgements of value and susceptibility)</b>				<b>Medium/Low</b>

---

<sup>1</sup> The Landscape Institute/Institute of Environmental Management and Assessment; Guidelines for Landscape and Visual Impact Assessment Third Edition; Spon; 2013

<sup>2</sup> Natural England. (2015) National Character Area (NCA) Profile 39: Humberhead Levels. Available online: [Humberhead Levels - National Character Area Profiles](#)

<sup>3</sup> Natural England. (2015) National Character Area (NCA) Profile 28: Vale of York. Available online: [Vale of York - National Character Area Profiles](#)

<sup>4</sup> AECOM. (2018) East Riding of Yorkshire Landscape Character Assessment. (2018) Available online: [Landscape character assessment](#)

<sup>5</sup> Landscape Institute Technical Guidance Note 02-21: Assessing Landscape Value Outside National Designations. Available online: [tgn-02-21-assessing-landscape-value-outside-national-designations.pdf](#)