

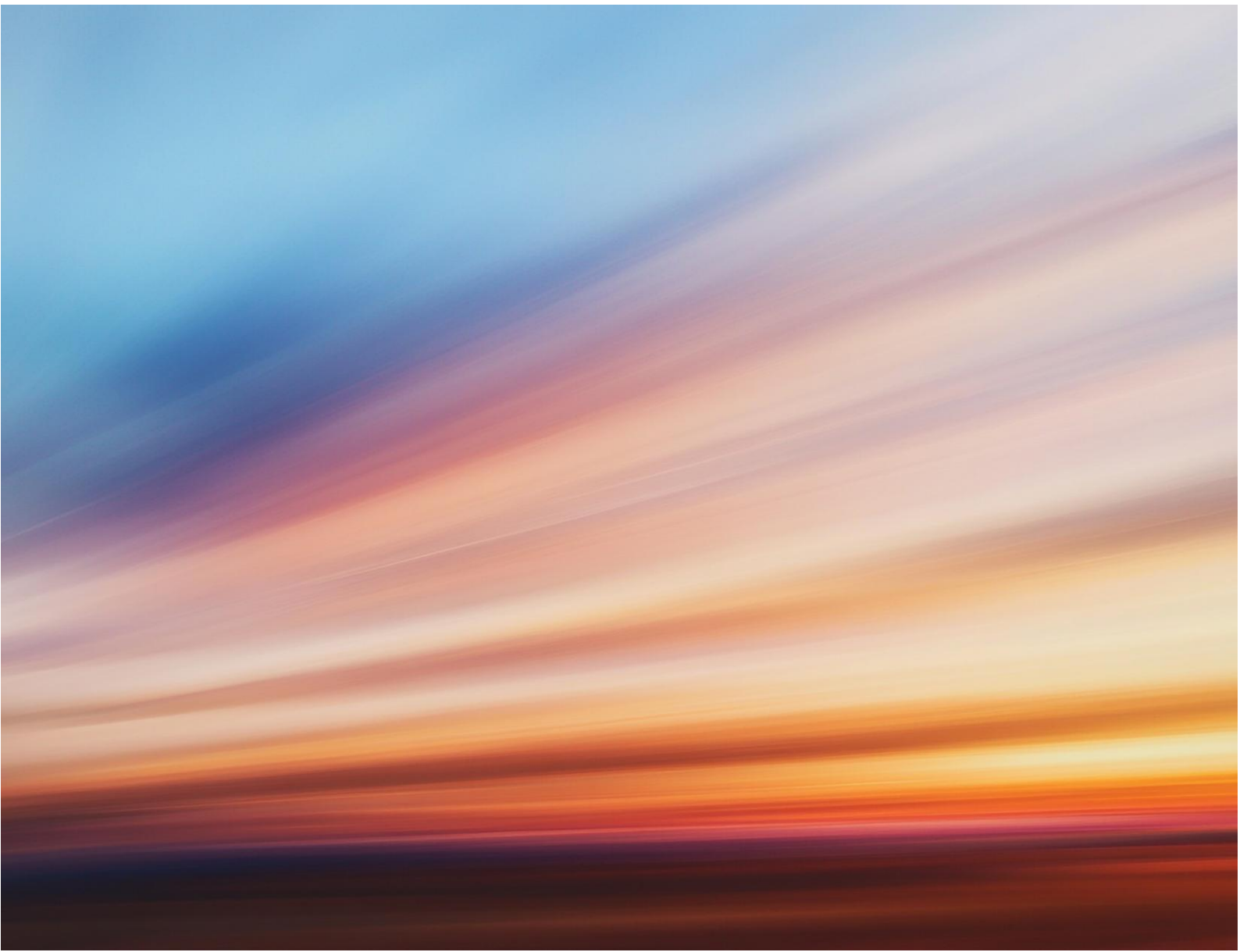
Mylen Leah Solar Farm

Preliminary Environmental Information Report (PEIR)

Volume 3

Appendix 16.1: Glint and Glare Analysis Elements

April 2026



Contents

- 1. Aviation receptors..... 1
- 2. Ground-based receptors..... 2
- 3. Solar farms near the Site..... 7

1. Aviation receptors

Table 1.1: Aviation infrastructures¹

Code	Name	Runways	Notes
AR02	Elvington Airfield GB-0075	08/26	Small airport, potentially disused.
AR03	Pocklington Aerodrome GB- 0391	13/31, 18/36	Unlicensed small airport. Limited flying by Wolds Gliding Club.
AR04	Brighton Airfield GB-0075	10/28	Unpaved airfield. Limited flying by Real Aeroplane Company and Brighton Flying Club. Former RAF aerodrome EGBR runways covered by buildings.
AR05	Cliffe Airstrip (Beeches Farm) GB-0361	10/28	Unpaved airstrip.
AR06	Birchwood Lodge Airstrip GB-0723	08/26	Unpaved airstrip.
AR07	Redmoor Farm Airstrip GB-0228	10/28	Unpaved airstrip, potentially disused.
AR08	Gilrudding Grange Airstrip GB-0714	09/27	Unpaved airstrip.
AR09	Leeds East Airport EGCM	06/24, 16/34	Licensed as a private mid-sized airport. No Air Traffic Control Tower.

Table 1.2: Approaching flying path receptors

Code	Notes
FP03	Pocklington Aerodrome runway 18
FP04	Pocklington Aerodrome runway 13
FP05	Elvington Airfield runway 8
FP06	Gilrudding Grange Airstrip runway 9
FP07	Leeds East Airport runway 6
FP08	Redmoor Farm Airstrip runway 10
FP09	Birshwood Lodge Airstrip runway 8
FP10	Cliffe Airstrip runway 10
FP11	Brighton Aerodrome runway 10

¹ Aerodromes and airfields are identified by their ICAO (International Civil Aviation Organization) four-letters code or by their UK identification code (GB).

2. Ground-based receptors

NOTE: Cardinal directions are denoted by the first letter (N, S, E and W). Acronyms are also used for intermediate directions (i.e. NW refers to north-west).

Table 2.1: Road receptors

Code	Name	Level	Local screening
RD1	B1228	Regional / local	Hedges and trees along the road, mainly deciduous.

Table 2.2: Building receptors

Code	Name	Local screening
BL001	Hall Park	Woods to NW/N, barns to W/SW, trees and hedges to S/SE/E/NE.
BL002	Melbourne Hall	Barns to N, woods to W/NW/N/NE, trees and hedges to SW/S/SE/E/NE.
BL003	Park Farm	Barns and woods to NE/E/SE, trees and hedges to W.
BL004	Brickyard Farm	Woods to NW/W/SW/SE, buildings to NE/E, tall hedges to NW/N/W, trees to S.
BL005	Hawkwood	Woods to W/NW/S/SE, barn to SW, trees and hedges to E/NE/N.
BL006	Alders	Woods to W/N/NE, sheds to NE, trees and hedges around.
BL007	Barn End	Barns to NW/NE/E/SE, hedges to SW/W/NW/N.
BL008	White Farm	Barns to N/NE/E, hedges to W/SW/S.
BL009	Bibbil Farm	Barns to E/SE, woods to NW/N, trees to NE/W, hedges to NE/N/NW/W/SW/S.
BL010	Ryedale House	Barns to W/NW/N/NE, woods to SW/S/NE, trees to W, hedges and sheds to NE/E/SE.
BL011	East Common Farm	Barns to N/NE/E, woods to W/NW/N, trees and hedges to E/SE/S/SW.
BL012	Johnson Haulage Krone	Barns to N/NE/E/SE/S, woods to NW/W, trees and hedges to NW/W/SW.
BL013	Melrose Farm	Woods to E, trees and hedges to NE, N/NW/W/SW/S/SE.
BL014	Unknown	Woods to NE/SW, buildings to NE/SE/SW, trees and hedges to NW/SW/S/E.
BL015	Melbourne Lodge	Buildings to NE/N/W/SE, woods to N/SW, trees and hedges to NE/E/SW/W/NW.
BL016	Whixley Lodge	Houses to NW//N/NE/SE, woods to W/SW, trees and hedges around.
BL017	Boundary Cottage	Houses to NW/N, woods to W/SW, trees to SW/NW, hedges to N/NE/E/SW/W/NW.
BL018	Dial Hall Farm	Buildings to W/NW/N/NE/E, woods to W/SW/S.
BL019	Lynwood House	Buildings to NW/N/SE, woods to NW/W/SW/S/SW, low hedges to NW/N/NE.
BL020	Blackwood Gate	Buildings to NW/W, woods to NW/W/SW/S/SE, low hedges to NW/N/NE/E.

Code	Name	Local screening
BL021	White House Farm	Buildings to W/NW/N/E, trees and hedges to W/S/E, low hedges to SE.
BL022	Chery Links	Houses to N/NE/E/SE/S, woods to SW, trees to SW/W, low hedges and sheds to W/NW.
BL023	Old Mill Cottages	Buildings to NW/NE/E/SW, woods to N/NE/SE, trees and hedges to W/SW/S/SE.
BL024	Holly Cottage	Buildings to NE/W, woods to E, trees, sheds and hedges to NE/N/NW/W/SW/S/SE.
BL025	Breckstreet Court	Buildings to S/SE/NW/N, woods to NE/E, trees to NE/E, hedges to W/NW/N.
BL026	Four Oaks	Woods around, trees to E.
BL027	Breckstreet Farm	Barns to N/NW/W, woods to NE/N/NW/W/SW, trees to E/SE/S.
BL028	Appleton House	Woods to NW, houses to NE/E/SE, trees to N/NW, low hedges to E/SE/S/SW.
BL029	West House Farm	Buildings to NW/N/NE/E/SE/S, hedges to N/NW/W/SW.
BL030	Fosses Farm	Barns to E/SE, trees to N, low hedges to N/NW/W/SW/S.
BL031	Grange Garth	Barns to NW, hedges to E/SE/S/SW.
BL032	Laytham Grange	Barns to NW/N/NE/E.
BL033	Oakfield Farm	Buildings to W/SW/E, woods to SW/SE, trees and low hedges to N/NE/E/SE/S.
BL034	Laytham Green Farm	Buildings to W/NE/E, woods to W/SW/S, trees and hedges to N/NW/W/SW/SE.
BL035	Dovecote	Buildings to W/NW, woods to W, tall hedges to S/SW/SE/N. Elevated ground floor?
BL036	Harthill Farm	Barns to N/S/SE, trees and low hedges to NW/W/SW.
BL037	Pear Tree/Snowdrop/Three Barn	House to W, woods to N/SW, hedges and trees around.
BL038	Hall Farm Cottage / The Lodge	Buildings to N/SW/S, woods to W/S/SW/SE, hedges to NE/E/W/SW, low hedges to N/NW.
BL039	Meadow View	Barns to W, woods to SW/S, trees and hedges to NE, fences and low hedges to E.
BL040	Layham Hall	Buildings to N/NE/E, woods to NE/SE/S/SW/W, hedges to NW/N/NE.
BL041	Granary Court	Houses to W/SW/S/SE, woods to NE/E/SW, hedges to W/S/SE.
BL042	Lowther Farm	Buildings to NW/E/SE, woods to S/SW/W/N/SE, hedges around.
BL043	Chapel Barn	Buildings to NW/N/NE, woods to N/W/SW, hedges around.
BL044	Field View	Buildings to S/SE/W/NW/NE, woods to W/NW/N/NE, low hedges around.
BL045	Favin Farm	Buildings to N/E/SE/S/SW/W, woods to W/NW/N/NW.

Code	Name	Local screening
BL046	Manor Barn	Woods, trees and hedges around.
BL047	Belt Farm	Buildings to N/SE, woods to E, trees and hedges to N/NE/E/SE.
BL048	Orchard Cottage	Buildings to S/SE, woods to NW/E/NE, hedges to NE/E/SE, low hedges to S.
BL049	Ruddings Wood Farm	Barns to W/SW, trees and hedges to N/NE/SE/S.
BL050	Glabe Farm	Buildings to NW/N/NE, woods to N, trees and hedges to WSW/S/E.
BL051	The Croft	Buildings to NE/E, woods to NE, trees and hedges around.
BL052	Aughton Rudding Grange	Buildings to W/NW/N, hedges and trees to W/SW/SE/E/NE.
BL053	Augton House	Buildings to W/NW, trees without hedges to E/SE/S/SW.
BL054	Rosewood Farm	Buildings to S/SE, woods to W/SW, trees and hedges to NW/N/NE.
BL055	A & A Wake	House to SW, woods to N/NE/E/SE, fences to W, trees and hedges to S.
BL056	The Oaks	House to NE, woods to NE/E/SE, fences to E, trees and hedges to N/NW/W/SW.
BL057	Bowland House	Woods to NW, trees and hedges to SW/W/NW/N/NE.
BL058	Acorn Cottage	Woods to NW/N/NE, trees and hedges to S/SW/W/E.
BL059	Blue Slates Farm	Buildings to E/NE, trees and hedges to SW/W/NW/N/NE/E.
BL060	South Grange Farm	Buildings to S, trees and hedges to W/NW/N/NE/E.
BL061	Sunny Bank	Buildings to NW/N/NE, trees to W/SW, low hedges to S/SE/E.
BL062	4 Shortacre Lane	Buildings to NW, woods to N, hedges and trees to NE/E/SE, low hedges to S/SW/W/NE/E.
BL063	Short Acre Farm	Buildings to NW/N/NE/E, tall hedges to SE/S/SW/W.
BL064	North Grange	Buildings to N/NE//NW, woods to S/SW, trees and hedges to W/NW/E.
BL065	North Grange	Buildings to N/NE/E/SE/S/W, woods to S/SW, trees and hedges to W/NW.
BL066	Willow Lodge	Buildings to NW/NE/E, woods to SE/E, trees and hedges to N/NE/E/SE/S/SW.
BL067	South View Farm	Barns to NW/N/NE/E, trees and hedges to W/SW/SE, sheds to W.
BL068	Mill House	Buildings to W/NW/N, trees and hedges to SW/S/SE, low hedges to E/NE.
BL069	The Old Mill	Buildings to W/SW/S, hedges to W/NW, low hedges to N/NE/E/SE.
BL070	Pheasant View	Houses to SW/S/SE, tall and dense hedges to SW/W/NW/NE/E/SE.

Code	Name	Local screening
BL071	8 Aughton Lane	Houses to NW/N/NE, woods to S/SW/W/NW, low hedges to E/W.
BL072	Tregonning Cottage	Trees and hedges around.
BL073	Millbridge Cottage	Buildings to S/SW, woods to NW/N, trees and hedges to SE/E/NE/N.
BL074	Mill House Farm	Barn to N/NW, hedges, sheds and trees to W/SW/S/SE/E/NE.
BL075	Blackberry Farm	Barn to E, hedges to SW/W/NW/N/SE.
BL076	Springfield Farm	Buildings to S/SE/E/NE, trees and hedges to N/W/SW/SE/NE, low hedges to NW.
BL077	Springhouse Farm	Buildings to NW/W/SW/S, trees and hedges to W/NW/N/NE/E.
BL078	Bridges Farm	Trees and hedges all around.
BL079	Oak Cottage	Buildings to NE/E/S, trees and hedges to NE/E/SE/S.
BL080	North Ross Farm	Buildings to W/SW/S/SE, trees and hedges to S/SE/E/NE/N.
BL081	Tivoli Lodge	Buildings to SW, trees and hedges to W/SW/S, hedges to SE/E/NE.
BL082	Fox Covert Farm	Barn to W, woods to SW/S/SE, trees and hedges to E/NE/N/NW/W/SW.
BL083	Bethel House	Barns to N/NE/E/SE.
BL084	South Ross Farm	Barns to N/NW/W/S, trees to SW, trees and low hedges to SE/E/NE.
BL085	Laytham Park	Buildings to SW/SE, trees and hedges around, open to S.
BL086	South Acre Farm	Buildings to NW/N/NE/E, hedges to W/SW/S/SE.
BL087	Unknown	Buildings to NE/E/SE, hedges to NW/W/SW/S/SE.
BL088	Acre Farm	Barns to S/SE/NE, trees to S/SW, hedges to NE.
BL089	Whinwood	Woods to N/NE, trees and hedges to W/NW/NE/E, hedges to SW/S/SE.
BL090	Boundary Farm	Barns to N/NW/W, trees and hedges to SW/S/SE/E/NE.
BL091	Boundary Farm Bungalow	Barn to NE, woods to N, trees and hedges to E/NE, buildings to S, low hedges to S/SW/W/NW.
BL092	Green Acres	Trees and hedges to SW/W/NW/N/NE/E, woods to SE, barn to S.
BL093	Ball Hall Farm	Woods and trees all around.
BL094	Willow Glade Farm	Woods all around
BL095	Melross	Barn to S, woods to SW/W/NW/NE/E/SE, trees to N.
BL096	Ross Moor Park Farm	Buildings to NE, woods and trees around.
BL097	West End Poultry Farm	Barns to E/SE, woods to NW/W/SW/S/NE, trees and hedges to S/SE/E.
BL098	Melbourne Grange Farm	Barns to NW/W/SW, woods to N, hedges to NE/E/SE/S.

Mylen Leah Solar Farm

Code	Name	Local screening
BL099	The Oaks	Buildings to SW/NW/NE, woods to NW/W/SW/S, trees and hedges to around.
BL100	Gamekeepers Cottage	Buildings to SW/W, woods to SW/W, trees and hedges around.

3. Solar farms near the Site

Table 3.1: Solar farms near the Site

Code	Name	Notes
SF01	Ryedale Farm	Small solar farm in Melbourne.
SF02	The Airfield	Small solar farm in Seaton Ross.
SF03	East Yorkshire Solar Farm	Large solar farm (400MW). DCO granted in May 2025.