

Welcome

Welcome to our consultation event for Mylen Leah Solar Farm.

We are here today to share our proposals for the project.



You can view all materials available to view today on the project website at: www.mylenleah-solar.co.uk

You are invited to take part in our statutory consultation, which runs from Thursday 16 April to Thursday 28 May 2026.



About Mylen Leah Solar Farm

If consented, Mylen Leah Solar Farm would have a capacity of approximately 500 megawatts (MW), generating enough clean electricity to power the equivalent of around 180,000 homes, helping to strengthen the UK's energy security.

- Mylen Leah Solar Farm will require a grid connection via underground cabling to National Grid Thornton Substation, which would transfer the electricity to the national electricity network.
- There is no battery energy storage system (BESS) included in the proposal. All the electricity produced would go directly to the national grid.
- Mylen Leah Solar Farm will play a key role in reducing the need to import expensive gas from abroad. Over its operational lifetime, the project would deliver real benefits, including employment during construction, opportunities for local businesses to become suppliers and a community benefit fund.

Who is Statkraft?

Statkraft is at the heart of the UK's energy transition. Since 2006, Statkraft has gone from strength to strength in the UK, building experience across wind, solar, hydro, energy storage and grid stability projects.

Invested
£1.8 billion
in the UK's
renewable energy
infrastructure.

Facilitated
**4.5 gigawatts
(GW)**
of new-build
renewable
energy.

Employs more than
500 people
in England,
Scotland
and Wales.

Statkraft's Talayuela Solar Farm, Spain



Consultation to date

April 2024

Introductory meeting held with East Riding of Yorkshire Council and The Planning Inspectorate



September 2024

Near-neighbour and grid search area landowner letters sent



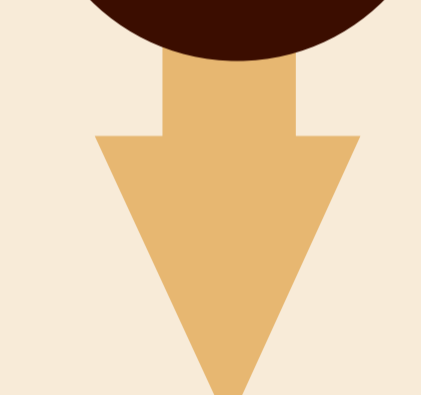
October 2024

Introductory meeting held with local Ward Members



March 2025

Online webinars to present the findings from the co-design workshops held



September 2024

Introductory letters sent to local community members, inviting them to meet and discuss Mylen Leah Solar Farm

September 2024

Mylen Leah Solar Farm website launched and the concept masterplan published

November 2024

In-person co-design workshops held in Melbourne and Bubwith and attendance at scheduled parish council meetings in Seaton Ross, Melbourne, East Cottingwith and Storwood

March 2025

Report presenting the key findings and themes from the co-design workshops published

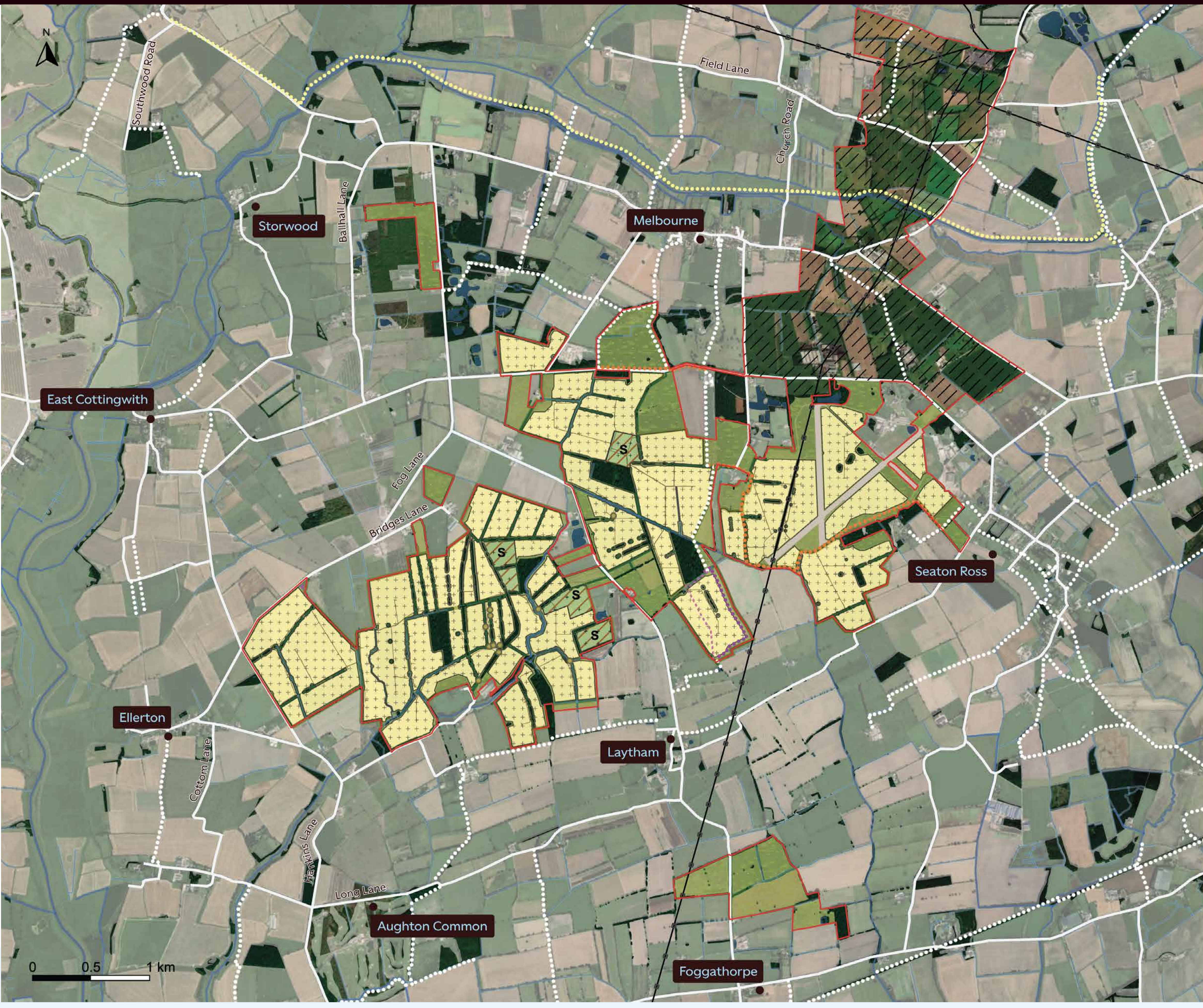
In addition to the activities outlined below, we have continued to engage with key stakeholders, including parish councillors and landowners, to discuss the project and incorporate feedback iteratively as we develop our more detailed proposals.



Details of how we have considered feedback to date is shown on page 9 of the information booklet.



Our proposals



Legend

- Draft Order Limits

Existing Features and Constraints

- Existing vegetation within and around the site
- Existing public rights of way (PRoW)
- National long distance path
- Existing overhead electricity lines
- Existing watercourses
- Existing waterbodies
- Existing former airfield runway
- Existing veteran or ancient tree

Indicative Proposed Development

- Proposed area of solar PV development and/or associated development
- Proposed area for ecological mitigation and enhancement
- Proposed woodland planting for screening
- Proposed hedgerows for screening and creation of ecological corridors to be maintained at a minimum height of 2.5m
- Existing hedgerow to be maintained at a minimum height of 2.5m (where required for screening purposes) and may require new planting (gapping up)
- Proposed section of PRoW to be diverted
- Proposed diverted PRoW
- Proposed permissive route
- S Potential substation location (maximum 2 out of 4 will be included within DCO application. Locations identified as not requiring a substation are proposed to accommodate PV panels)
- Proposed underground grid connection corridor
- Proposed internal access roads

i

A high-resolution version of the masterplan is available to view at this event, alongside a series of other maps and plans showing features such as proposed access routes.

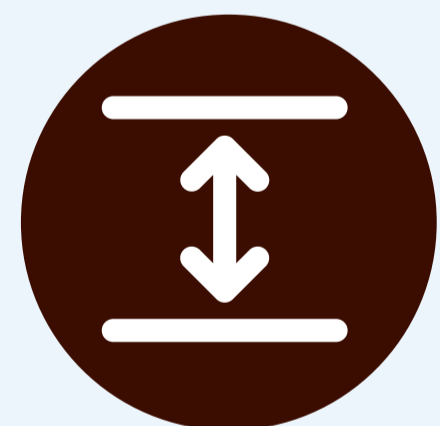
If you would like help finding these, or any assistance locating the information you are looking for, please speak to a member of the project team, who will be happy to assist.

How our plans have evolved



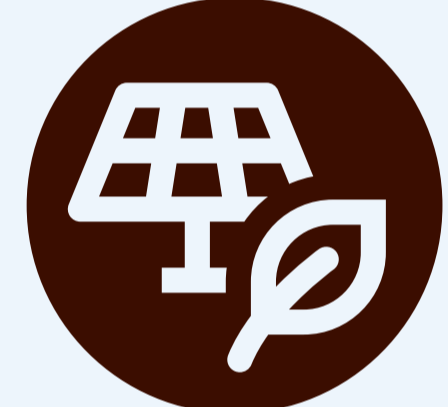
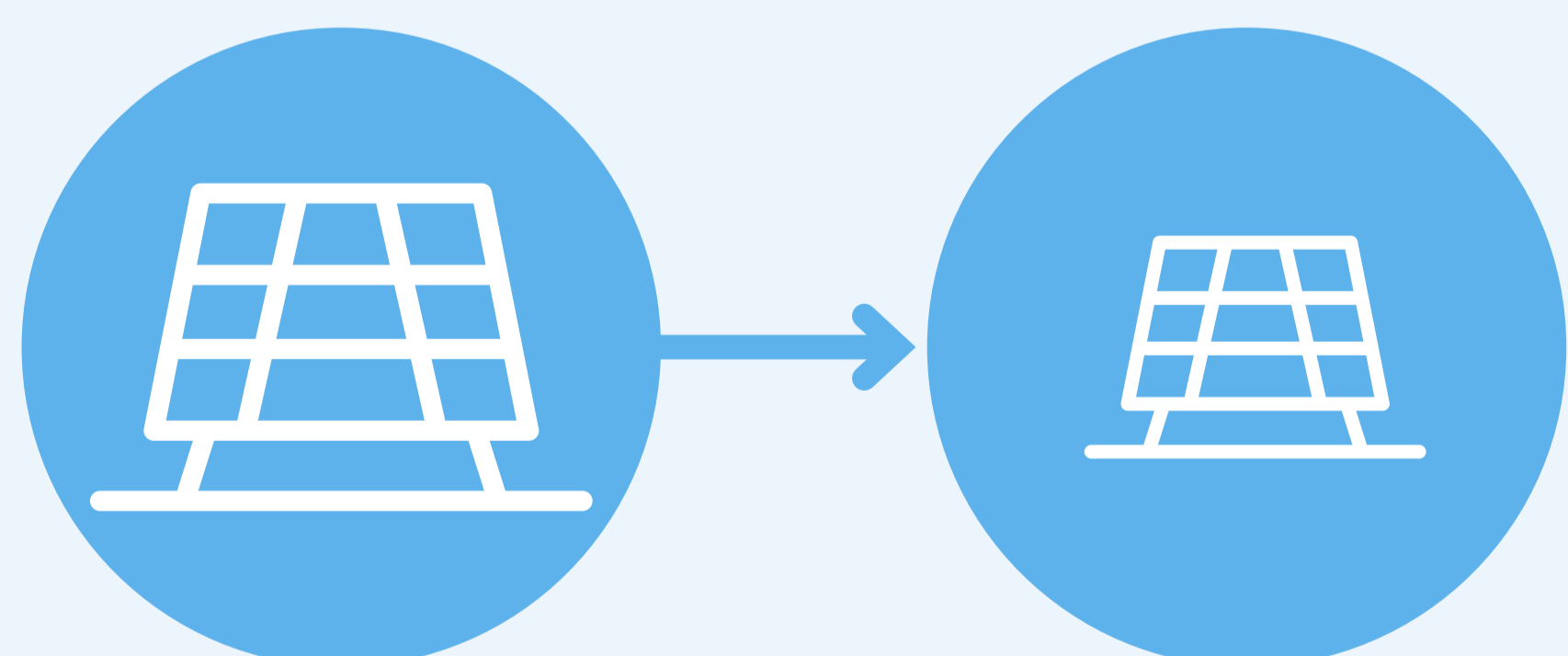
Removal of panels from southern area of the site

One of the most significant changes we have made to the project is the removal of solar panels from the southern part of the site closest to Foggathorpe. Some of the southern area remains where we are proposing to use it for biodiversity and landscape planting, including new hedgerows, meadow grassland and other habitats.



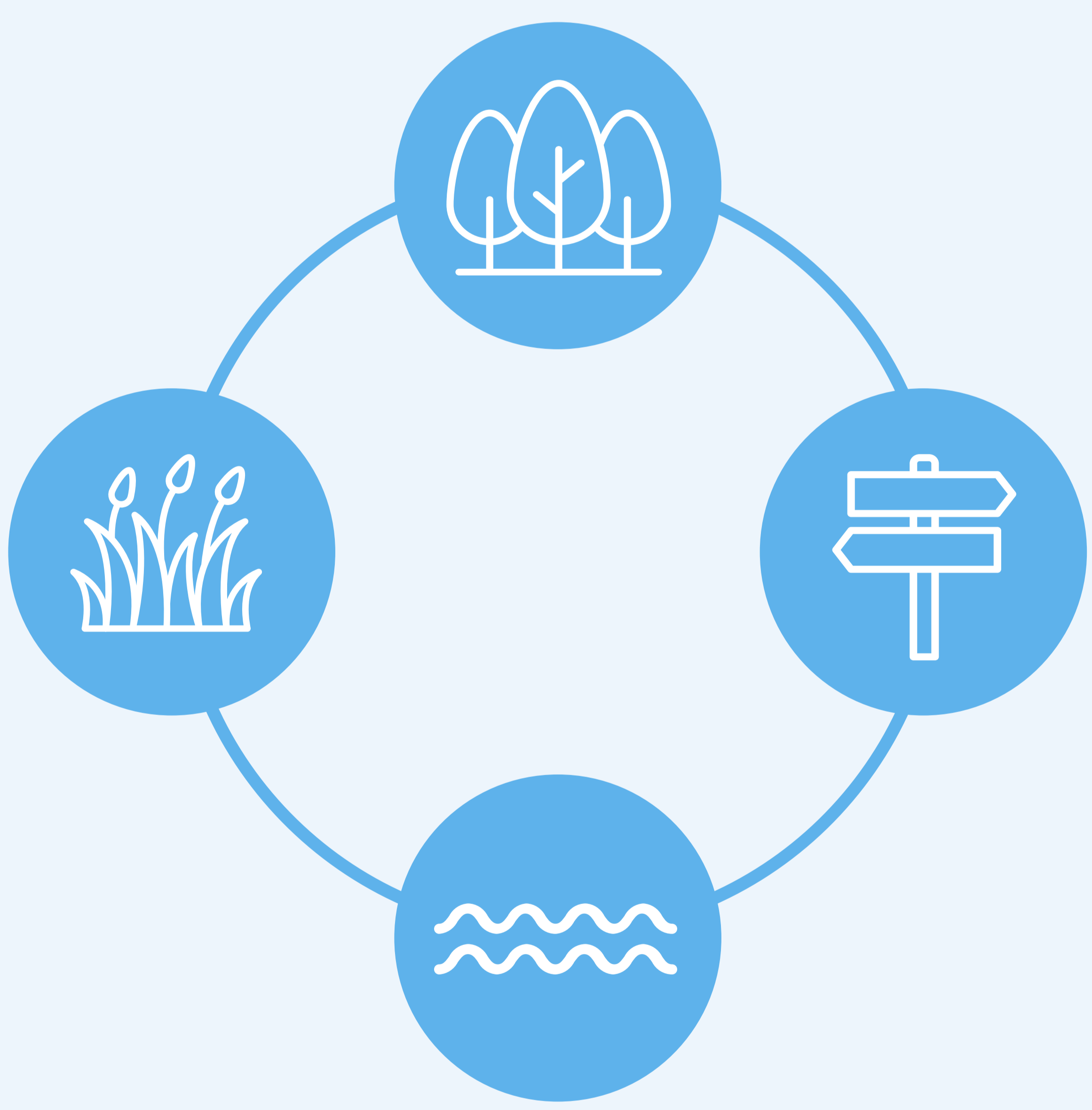
Reducing panel height

We have reduced the maximum height of the solar panels from 5.5 metres to 3.5 metres.



Reducing visual impact

Across the site, we have worked to ensure that the layout sits sensitively within the local landscape.



We have also considered how the project's larger infrastructure, such as the on-site substation(s), can be positioned and designed to reduce its visual presence, locating them away from residential properties, sensitive views and existing woodland blocks.



Design principles

We have developed a series of project design principles to ensure that we mitigate the effects of the project where possible, and conserve and enhance the natural environment.

These design principles will be refined further at the application stage.



Climate action

- Maximise the potential to efficiently generate clean, secure and affordable energy.
- Take steps to decarbonise Mylen Leah Solar Farm throughout its project lifecycle.
- Design for resilience against the effects of climate change.



Place

- Protect the amenity of homes and villages, with buffers and setbacks from built development.
- Retain and enhance existing public rights of way and create new permissive footpaths.



Environment

- Retain and protect existing trees and woodlands from built development, where possible.
- Retain and protect existing hedgerows and ditches, where feasible.
- Create new habitats to support biodiversity to help regenerate ecosystems that integrate with the landscape.
- Respect the setting of historic and cultural sites.
- Protect and enhance the local environment.
- Retain and enhance green infrastructure corridors to improve connectivity for wildlife through the Site and into the surrounding landscape.
- Reinforce the existing landscape structure and sequential experience for users.



Shared value

- Create jobs and contribute to the local economy, through our local supply chain registry.
- Provide resources for research and development.
- Provide a positive legacy for local communities through our community benefit fund, which would last for the operational lifetime of Mylen Leah Solar Farm.

For more information, see Chapter 3 of our Preliminary Environment Information Report (PEIR).

Alternatively, you can speak to a member of the environmental team to discuss the design principles and how they have shaped our proposals.



Overview of the EIA Process

Mylen Leah Solar Farm is classified as an Environmental Impact Assessment (EIA) development, which means we are required to assess the likely environmental effects of the project.

The goal of the EIA process is to ensure that we:

- identify any likely significant environmental effects (positive or negative) the project may have.
- implement measures to reduce or remove negative effects.
- work to enhance positive effects.

The findings from the EIA will be presented in the Environmental Statement, which will be submitted as part of our DCO application to The Planning Inspectorate.

We have produced a Preliminary Environmental Information Report (PEIR), which sets out our preliminary EIA findings and proposed mitigation measures. We are now consulting on the PEIR so that stakeholders and local communities can develop an informed view of the project and provide feedback.

A summary is provided on pages 16–21 of the information booklet, with the full PEIR and its Non-Technical Summary available to view at this event.



Biodiversity

A key aim of Mylen Leah Solar Farm is to enhance biodiversity and contribute positively to the local environment.

There is an expectation that all projects deliver a biodiversity net gain (BNG) of 10%, however at Statkraft we aim to deliver above this measure. In practice, BNG at Mylen Leah Solar Farm would include new hedgerows, wildflower meadows, native woodland planting, enhanced grassland, and the creation and management of habitats to support wildlife for the lifetime of the project.

As part of our preliminary assessments, we have also engaged with Natural England, East Riding of Yorkshire Council and other stakeholders to inform our approach.

For more information, see PEIR Chapter 7.



We are keen to hear your thoughts on our approach to ecology, mitigation and enhancement.



Public rights of way and permissive routes

The project design takes account of existing public rights of way across the site and we are committed to keeping these open, safe and accessible throughout construction and operation, where possible.

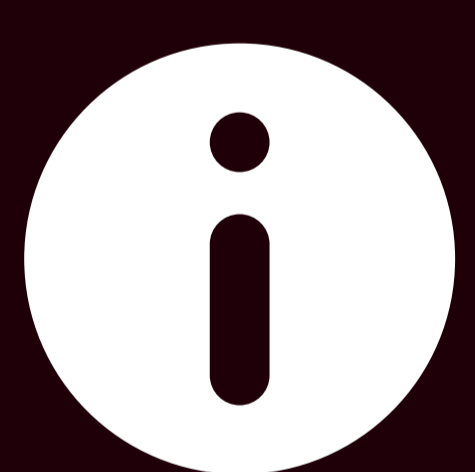
Only one public right of way is proposed to be permanently diverted, and it would remain open while the replacement route is put in place to maintain local connectivity during construction.

New permissive paths and path enhancements within the site would lead to improved amenities for users and would connect to existing routes within the local area.



As part of the statutory consultation, we are keen to hear your thoughts on our proposals for public rights of way and permissive routes, including any improvements or additional links you would like to see to further improve connectivity.

For more information, see PEIR Chapter 3.



Public rights of way and permissive routes are shown on our project masterplan, which is available to view at this event.



Community benefits

Statkraft is committed to supporting local community projects in the areas we operate.

In 2024 we doubled our commitment to £400 per MWac of operational capacity of our solar farms. This equates to an estimated £200,000 annual community fund.

How it works: the fund would be independently administered by a third-party organisation. Final decisions on grant allocation would be made by a local panel of community representatives, and not by Statkraft.

What it funds: community and environmental projects within the parishes closest to the project. These could be, for example, local sustainability or environmental initiatives, village hall improvements, sports-facilities upgrades, funding local school projects and energy-efficiency measures.

When it starts: the earliest possible start date for the fund would be 2030, when Mylen Leah Solar Farm would be operational.



We are interested to hear your thoughts on the proposed community benefit fund, and whether there are any local projects or priorities you think it should support.



Responding to our consultation

You can respond to the consultation in a number of ways, including:



in person at our consultation events



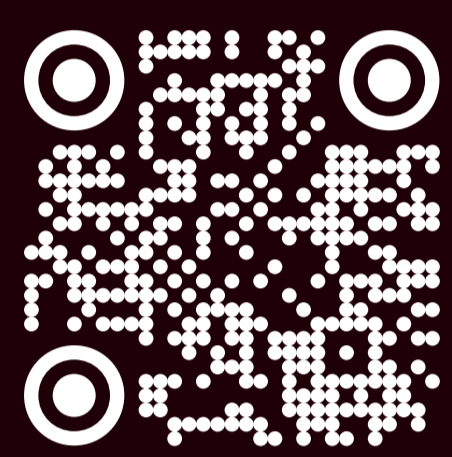
by post using the FREEPOST address – FREEPOST MYLEN LEAH (no stamp required)



by email to community@mylenleah.com



via a printed copy of the feedback form, copies of which are available at events, at local information points and by request.



You can access our website by scanning the QR code on this page, where you will find a link to sign up to our webinars.

What happens next?

After the consultation closes, we will carefully review all feedback received and analyse the main themes of consultation. Respondents' views will be taken into account as we update the design of the project.

Sign up to updates on our project website to be kept up to date with our application's progress.

