



# Achrugan Wind Farm

Strathy and Armadale Community Council

October 2024

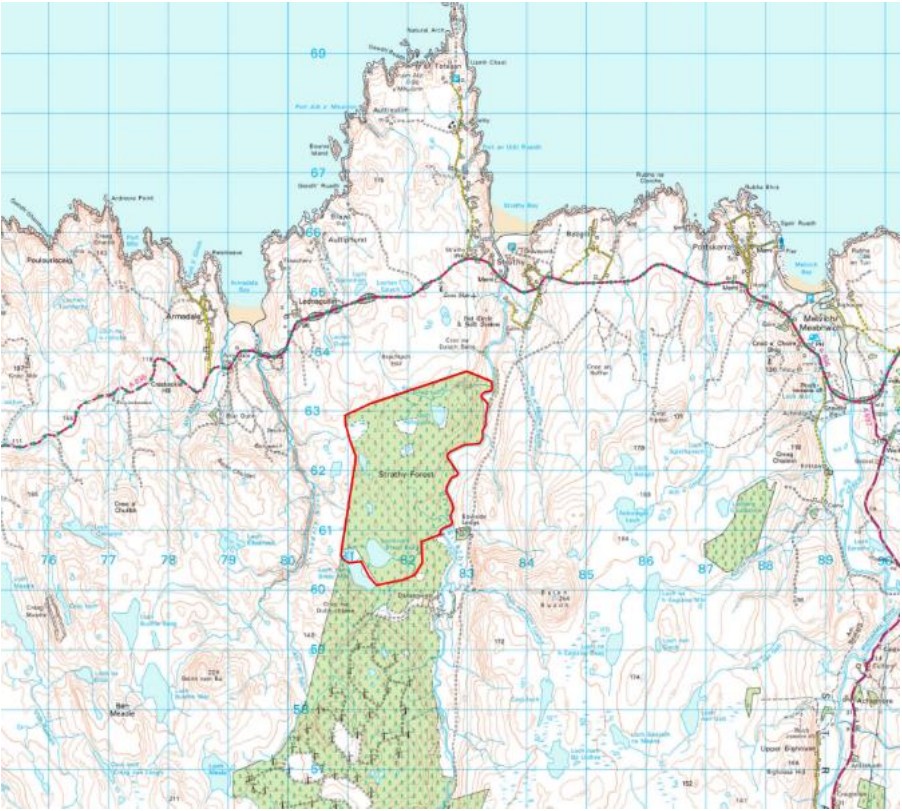


**Statkraft**

# Statkraft



# Achrugan Wind Farm



# Proposed Development



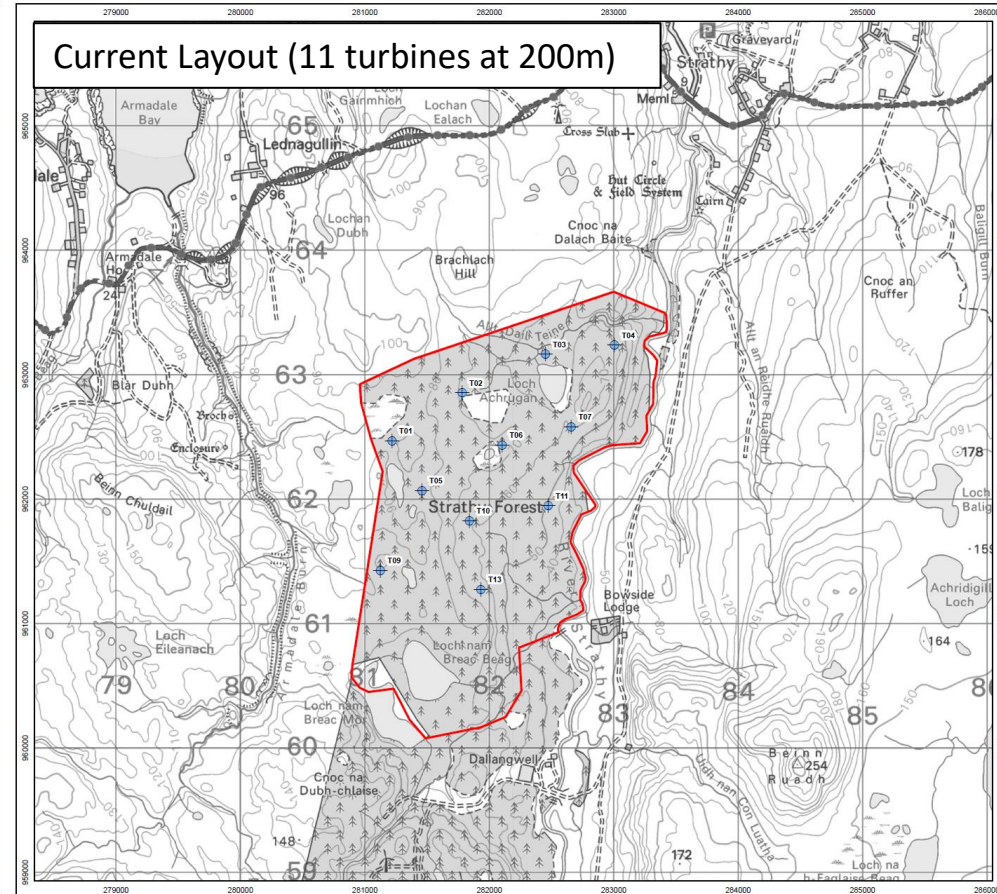
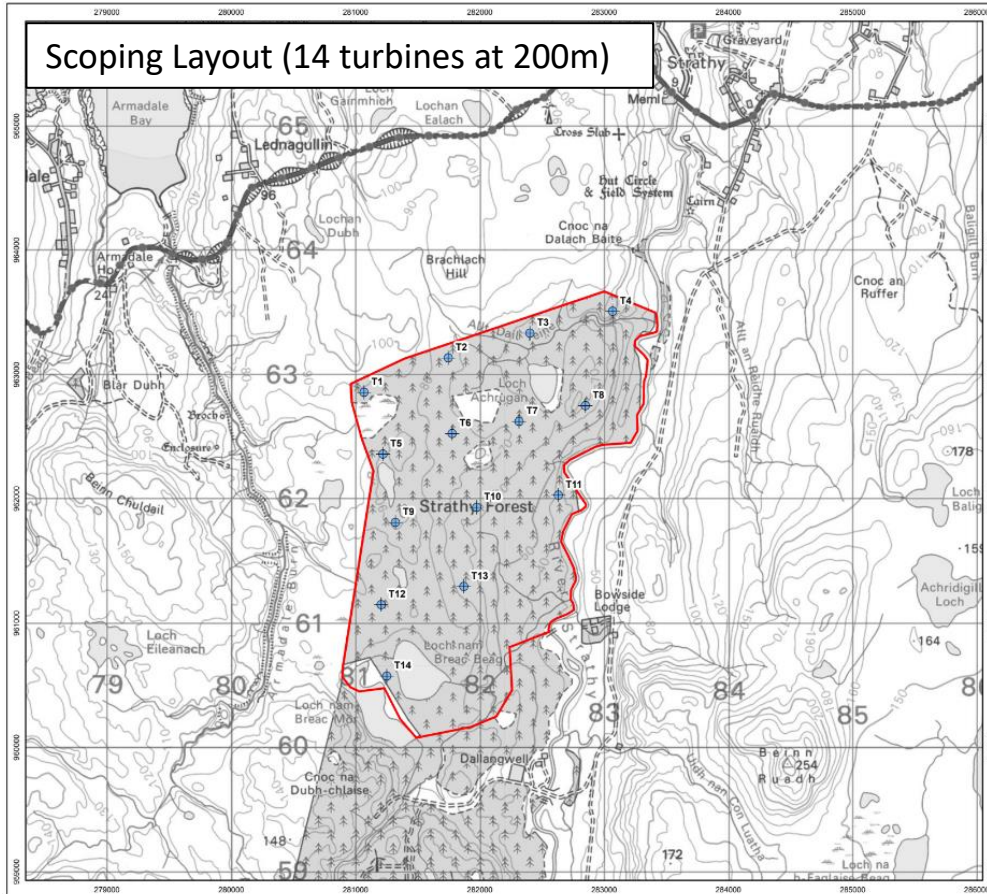
Coniferous Forestry, within Site boundary.

- 11 turbines with maximum tip heights of 200m
- Battery Energy Storage System (BESS) has been removed from our plans for this development
- Significant biodiversity enhancement – forest-to-bog restoration.



Photomontage, east of the site. Bowside Lodge.

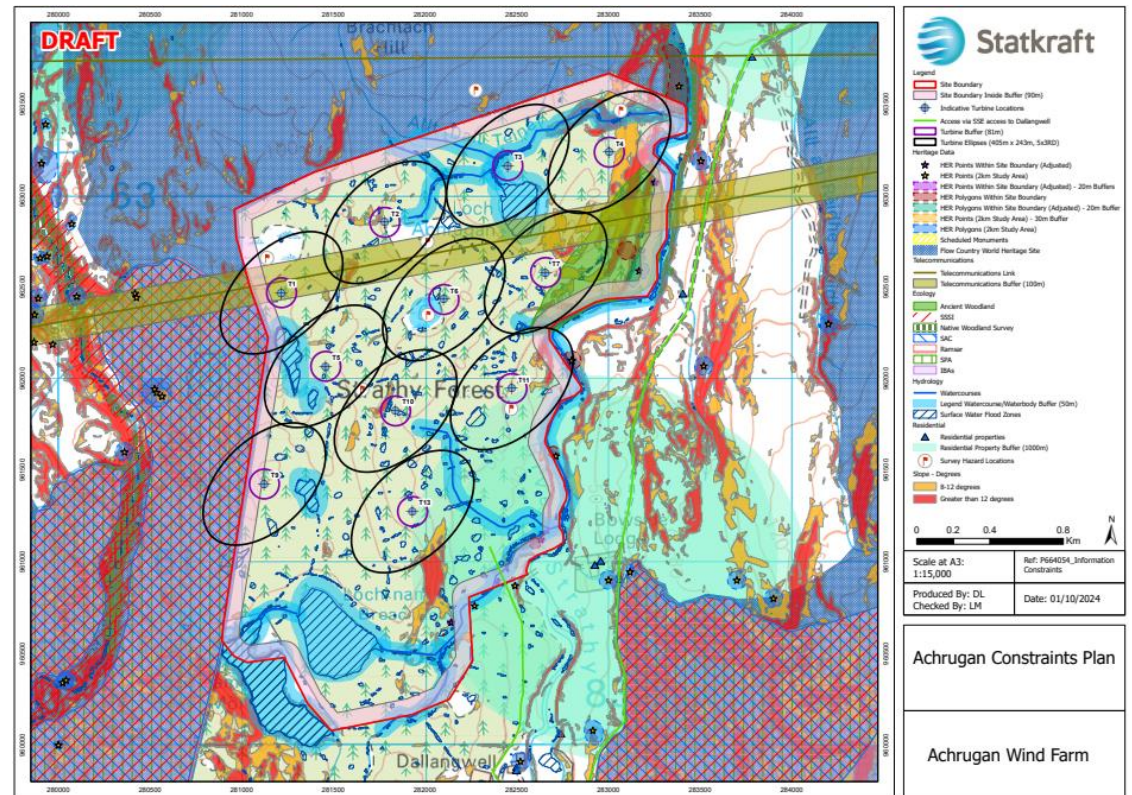
# Design Evolution – live design



- Legend
- Site Boundary
  - Indicative Turbine Locations

# Design Considerations

- Landscape and visual
- Deep peat
- Telecoms link
- Watercourses
- Steep gradient
- Ornithological (nesting protected species)
- Residential properties
- Cultural heritage assets



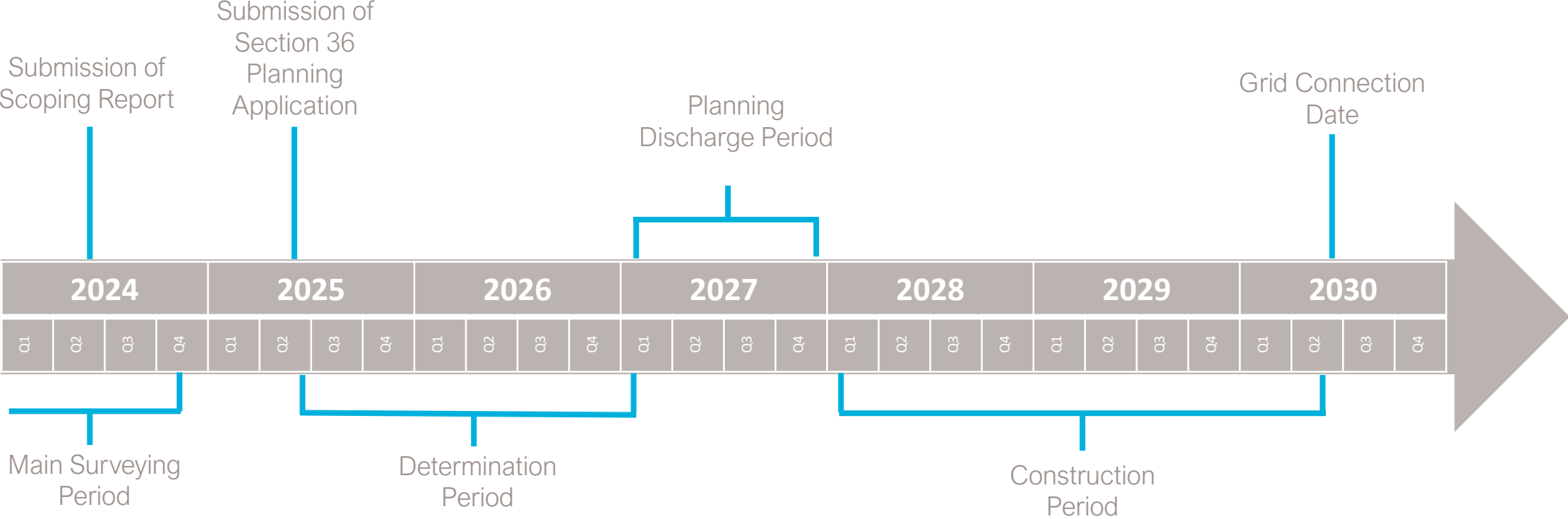
# Why this project is important.

- Climate change is leading to increased frequency of **extreme weather** events such as flash flooding, prolonged rainfall, drought and extreme heat.
- The climate crisis and human **displacement** are becoming increasingly interconnected.
- Global **biodiversity** is declining as an impact of climate change.
- The energy sector is responsible for around three quarters of global greenhouse gas emissions.

## Energy mix is key...



# Project Timeline (key milestones)





# Community Benefit

## Achrugan Wind Farm

- £5,000 per MW of installed capacity
- Opportunity for shared ownership uptake
- Broadband feasibility study

Up to **£396,000** per year for the lifetime of the development.



## Statkraft in the Scotland

- Invested over £4 million in local communities in Scotland since 2006
- Commitment to using local supply chain
- Funding STEM scholarships