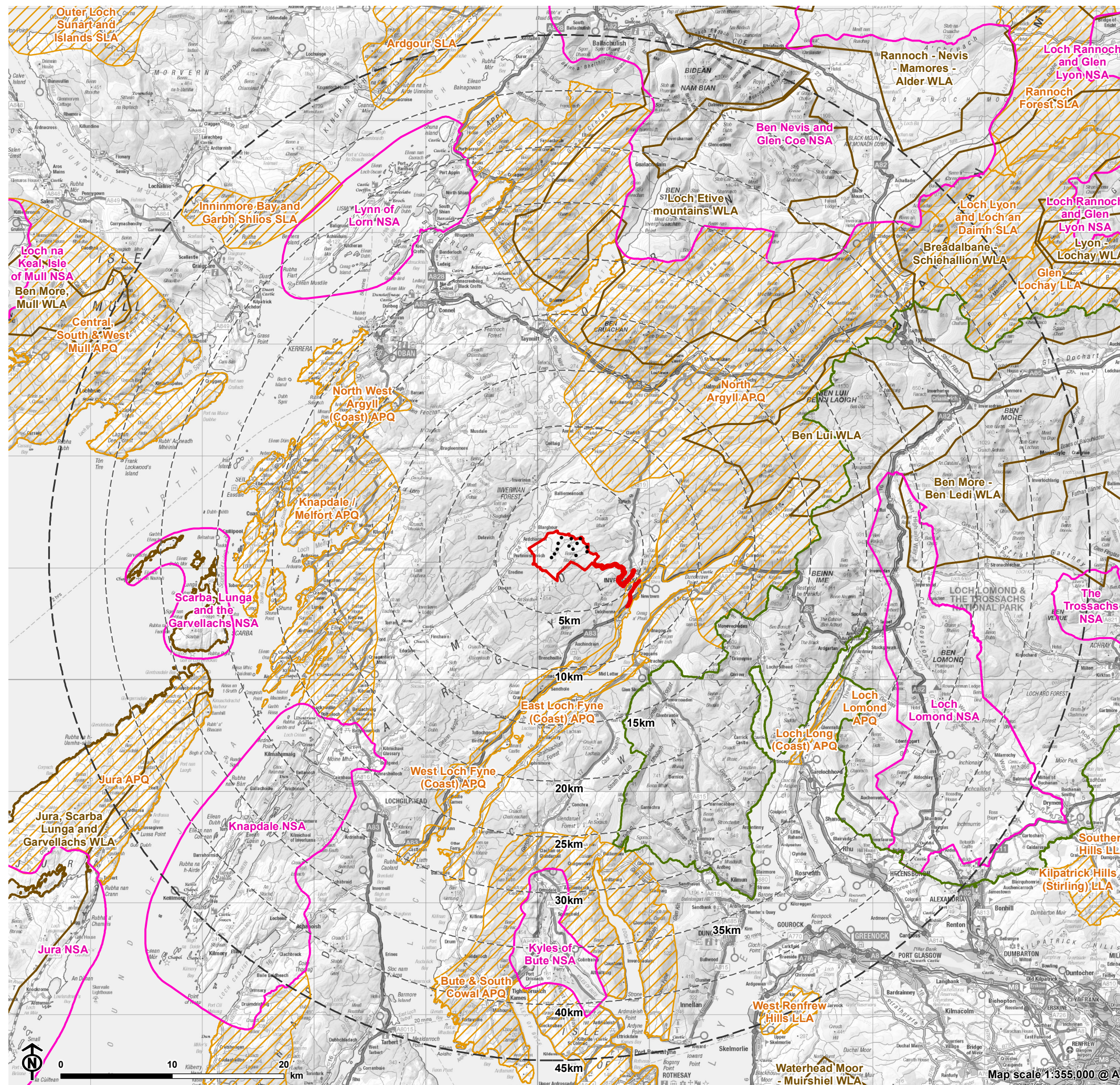


Figure 6.1.6: Designated Landscapes & Wild Land Areas



- Site boundary
- Turbine
- 5km intervals from outermost turbines
- 45km from outermost turbines
- Loch Lomond and the Trossachs National Park
- National Scenic Area (NSA)
- Wild Land Area (WLA)
- Local Landscape Designation (APQ, SLA, LLA)

**Notes:**

The local landscape designations include Areas of Panoramic Quality (APQ) in Argyll and Bute, Special Landscape Areas (SLA) in the Highlands and Perth and Kinross, and Local Landscape Areas (LLA) in Stirling and Inverclyde.