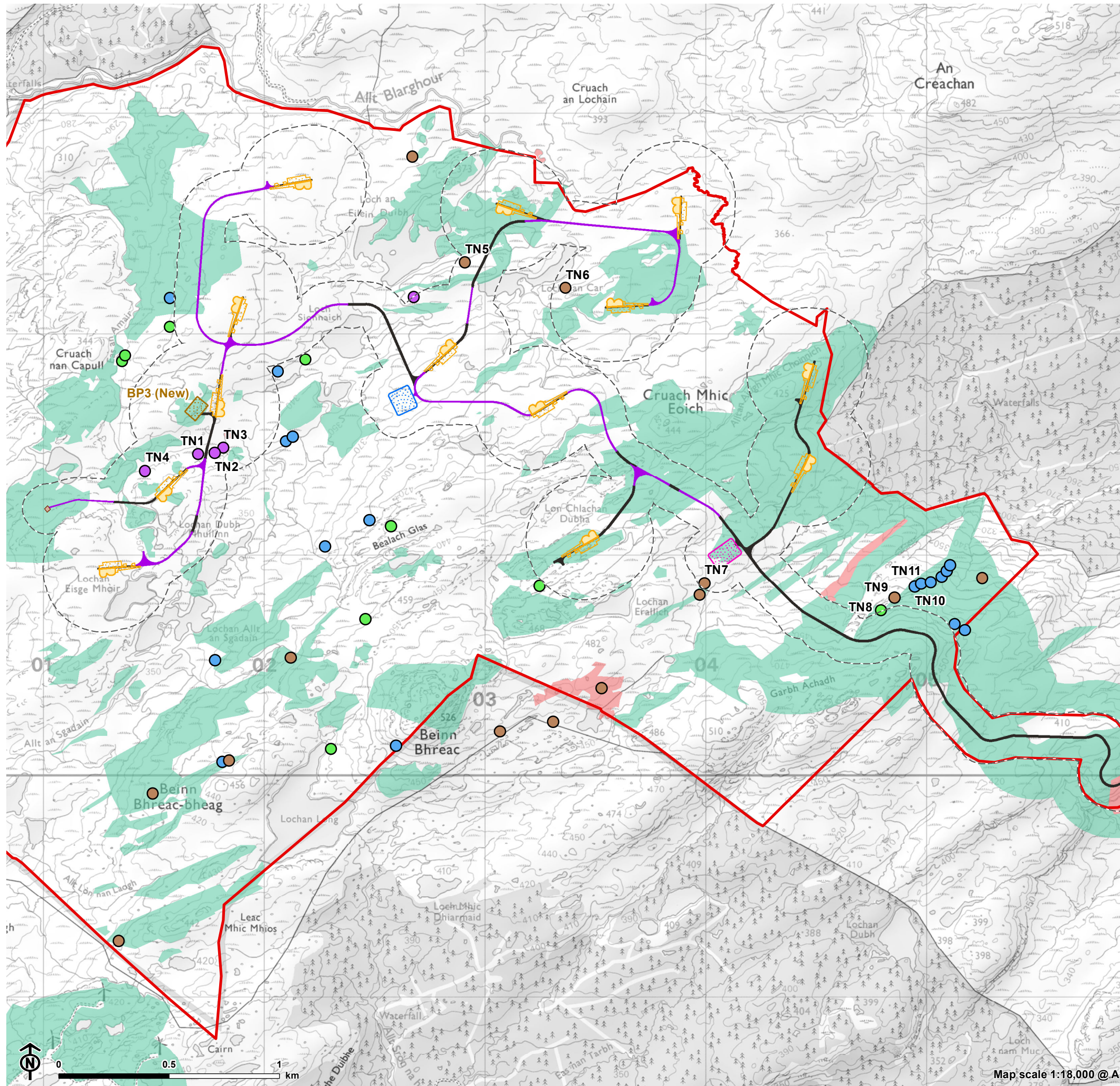


Figure 7.3.1: Ground Water Dependent Terrestrial Ecosystems (GWDEs)



- Site boundary
- Borrow pit
- Temporary construction compound
- Permanent compound including substation and BESS
- Temporary hardstanding
- Permanent hardstanding
- Permanent met mast
- Proposed floating track
- Proposed cut-and-fill track
- Infrastructure buffer

GWDE potential

- High
- Moderate

Potential GWDEs (high potential)

- M10 *Carex dioica*-*Pinguicula vulgaris* mire
- M11 *Carex demissa*-*Saxifraga aizoides* mire
- M32 *Philonotis fontana*-*Saxifraga stellaris* spring
- M6 *Carex echinata*-*Sphagnum recurvum/auriculatum* mire

TN1-TN11 are Potential GWDEs target notes that are discussed within the chapter text.

The infrastructure buffer consists of 250m buffer around turbine foundations and borrow pits (excavations deeper than 1m), and 100m buffer around hardstandings, tracks, construction compounds and met station (excavations shallower than 1m).

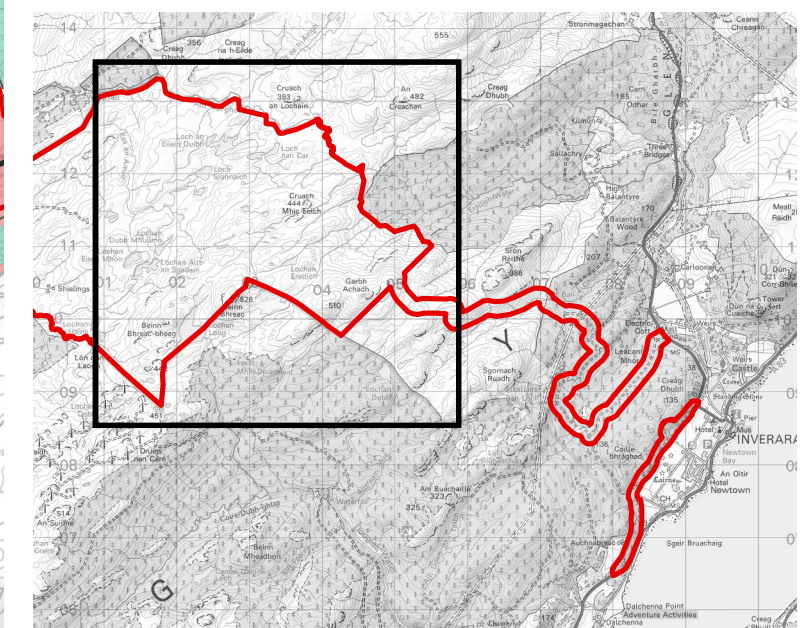
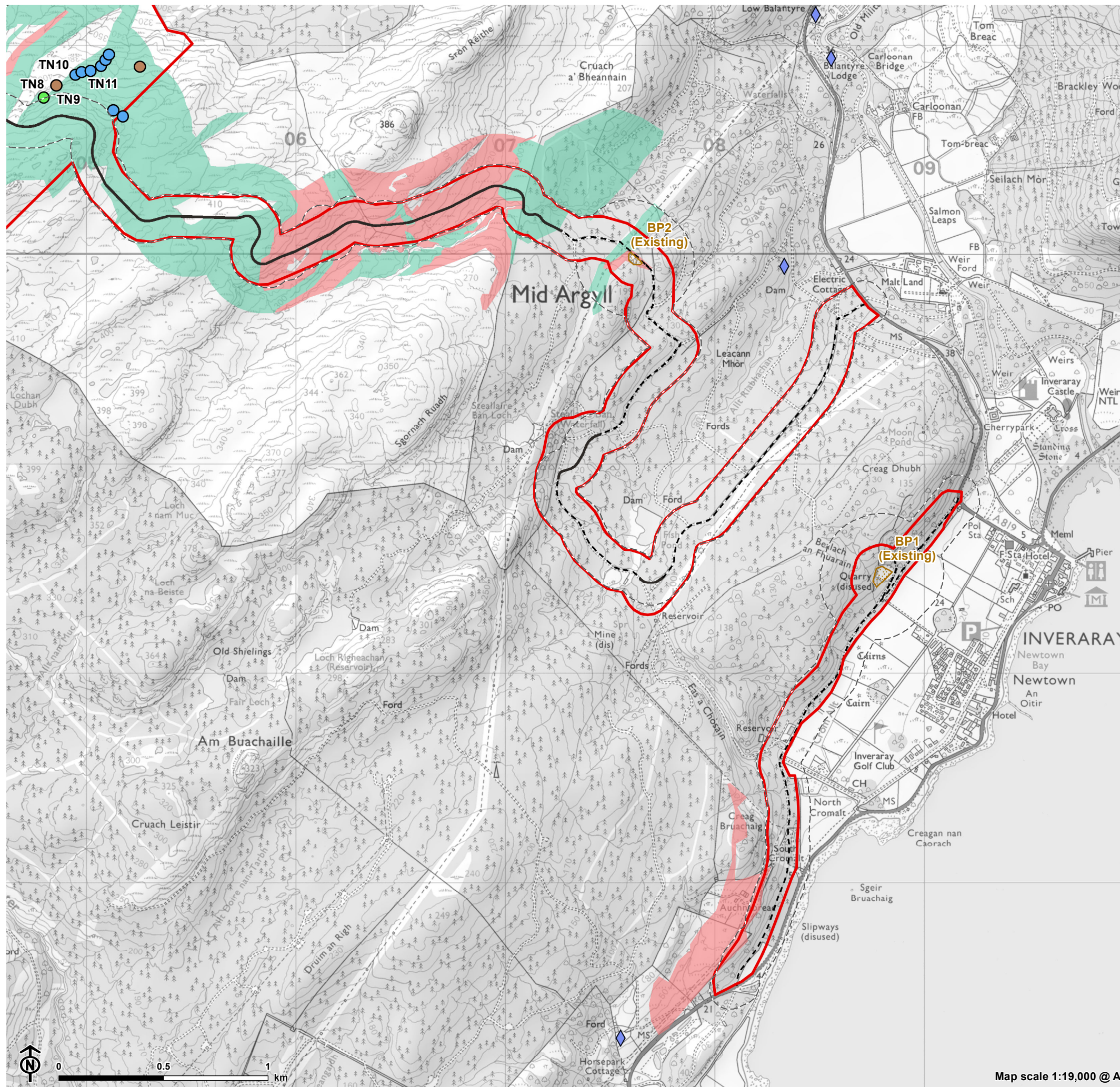


Figure 7.3.2: Ground Water Dependent Terrestrial Ecosystems (GWDEs)



- Site boundary
- Borrow pit
- Existing access track
- Proposed cut-and-fill track
- Infrastructure buffer
- Private Water Supply (PWS) Source

GWDE potential

- High
- Moderate

Potential GWDEs (high potential)

- M10 *Carex dioica*-*Pinguicula vulgaris* mire
- M11 *Carex demissa*-*Saxifraga aizoides* mire
- M32 *Philonotis fontana*-*Saxifraga stellaris* spring

TN1-TN11 are Potential GWDEs target notes that are discussed within the chapter text.

The infrastructure buffer consists of 250m buffer around turbine foundations and borrow pits (excavations deeper than 1m), and 100m buffer around hardstandings, tracks, construction compounds and met station (excavations shallower than 1m).

