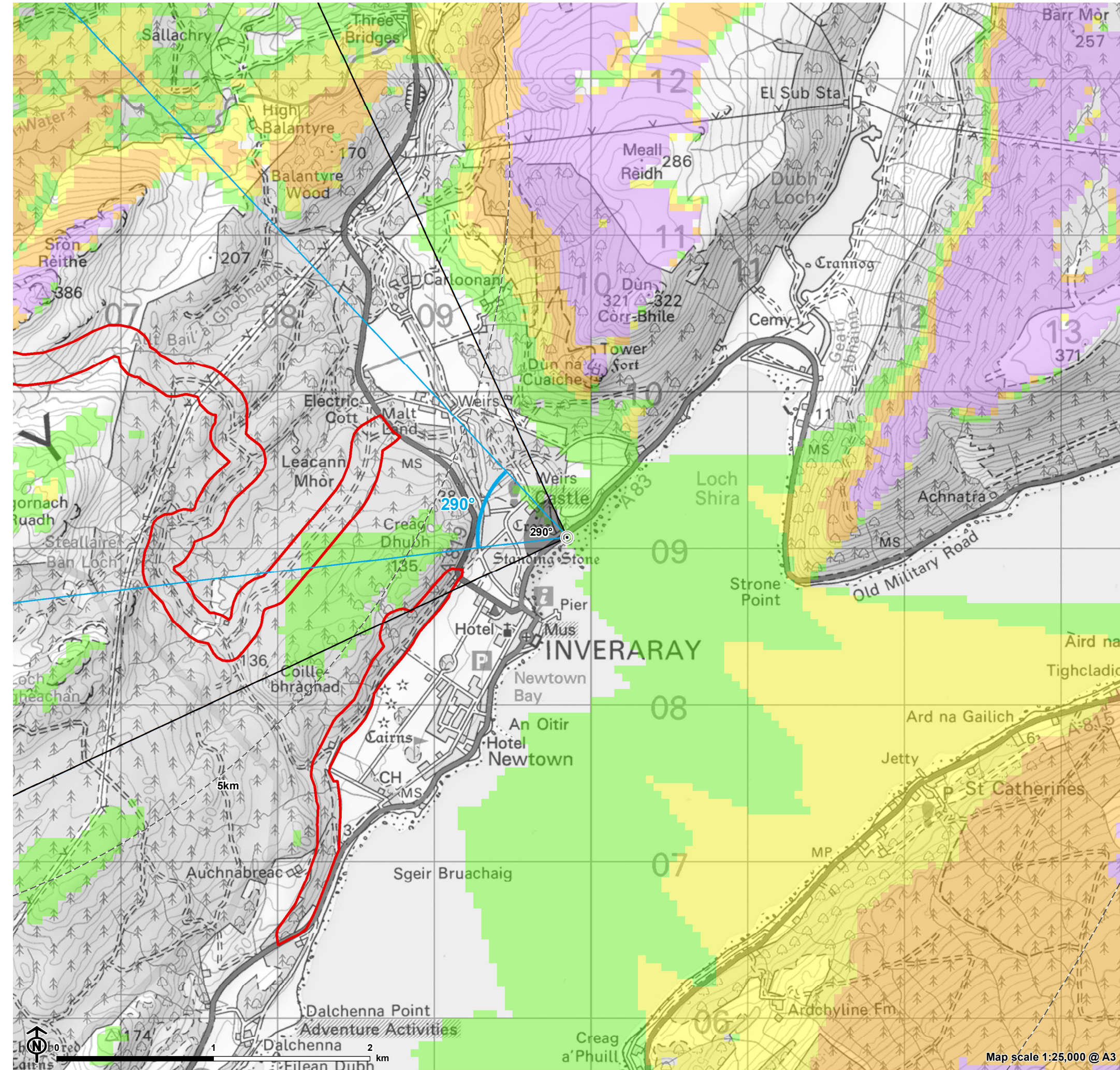
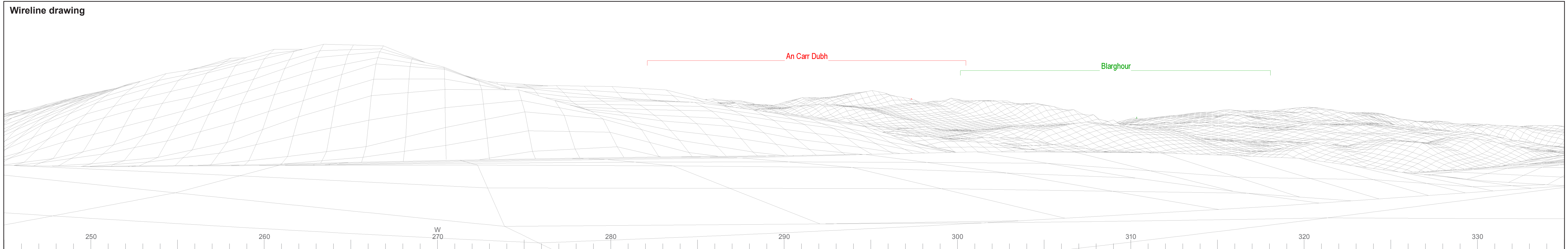


Figure 10.5.15:
Viewpoint CH15 - Inveraray Castle GDL (GDL00223) from Aray
Bridge (LB11545)



- Site boundary
 - + Turbine layout
 - 5km intervals from outermost turbines
 - 45km from outermost turbines
 - o Viewpoint
- Theoretical blade tip visibility (180m)**
- 1-3 turbines visible
 - 4-6 turbines visible
 - 7-9 turbines visible
 - 10-13 turbines visible
- ∠ 53.5° Field of View
- ∠ 90° Field of View

The ZTV is calculated to turbine tip height (180m) from a viewing height of 2m above ground level. The terrain model assumes bare ground and is derived from OS Terrain 50 height data (obtained from Ordnance Survey in July 2019). Earth curvature and atmospheric refraction have been taken into account. The ZTV was calculated using ArcMap 10.8.1 software.



© Crown copyright and database rights 2023. Ordnance Survey data. Licence number: 0100031073



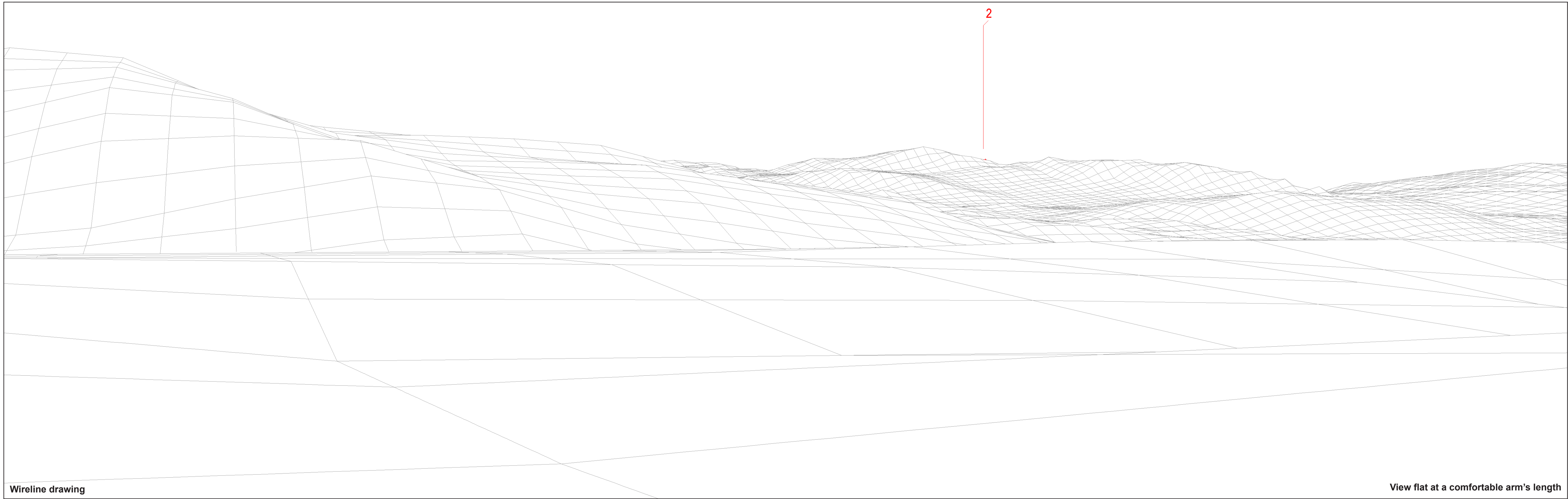
OS reference: 209849E 709070N
 AOD: 2.43 m
 Direction of view: 290°
 Nearest turbine: 5.87 km

Horizontal field of view: 90° (cylindrical projection)
 Principal distance: 522 mm
 Paper size: 841 x 297 mm (half A1)
 Correct printed image size: 820 x 260 mm

Wind Farm Developments key
 (by status):

- Proposed scheme
- Operational
- Under construction
- Consented
- Application
- Scoping
- Appeal/PLI

An Càrr Dubh Wind Farm
Figure: CH15a
 CHVP15: Inveraray Castle GDL (GDL00223) from Aray Bridge (LB11545)



Wireline drawing

View flat at a comfortable arm's length



OS reference: 209849E 709070N
AOD: 2.43 m
Direction of view: 290°
Nearest turbine: 5.87 km

Horizontal field of view: 53.5° (planar projection)
Principal distance: 812.5 mm
Paper size: 841 x 297 mm (half A1)
Correct printed image size: 820 x 260 mm

Wind Farm Developments key
(by status):

Proposed scheme
Operational

An Càrr Dubh Wind Farm
Figure: CH15b
CHVP15: Inveraray Castle GDL (GDL00223) from Aray Bridge (LB11545)



Photomontage

View flat at a comfortable arm's length



OS reference: 209849E 709070N
AOD: 2.43 m
Direction of view: 290°
Nearest turbine: 5.87 km

Horizontal field of view: 53.5° (planar projection)
Principal distance: 812.5 mm
Paper size: 841 x 297 mm (half A1)
Correct printed image size: 820 x 260 mm

Camera: SONY ILCE-7RM3
Lens: 50mm Fixed Focal Length
Camera height: 1.5 m

Photography Date: 10/07/2022
Photography Time: 11:36:00

An Càrr Dubh Wind Farm
Figure: CH15c

CHVP15: Inveraray Castle GDL (GDL00223) from Aray Bridge (LB11545)

© Crown copyright and database rights 2023 Ordnance Survey data. Licence number: 0100031673