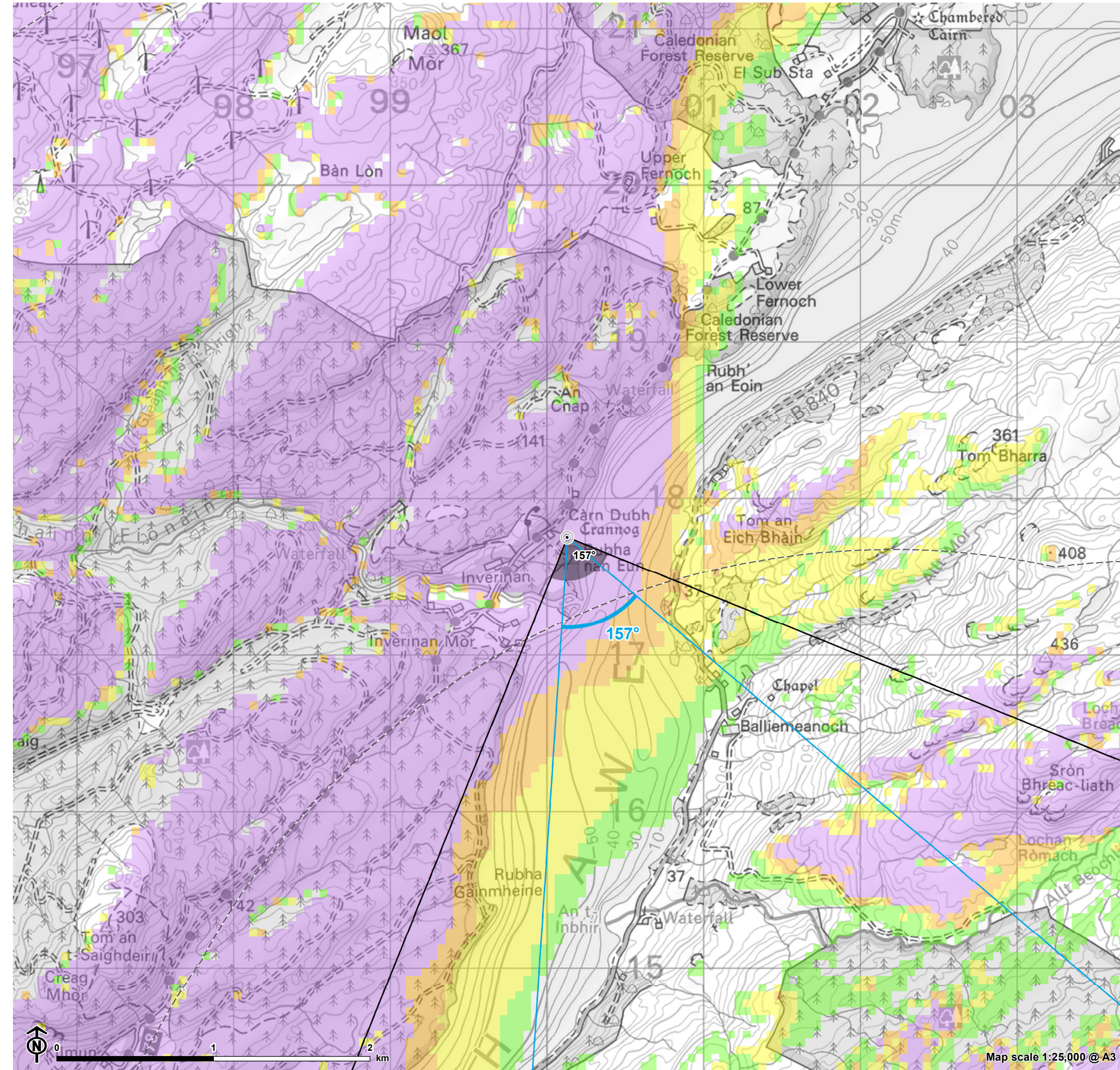
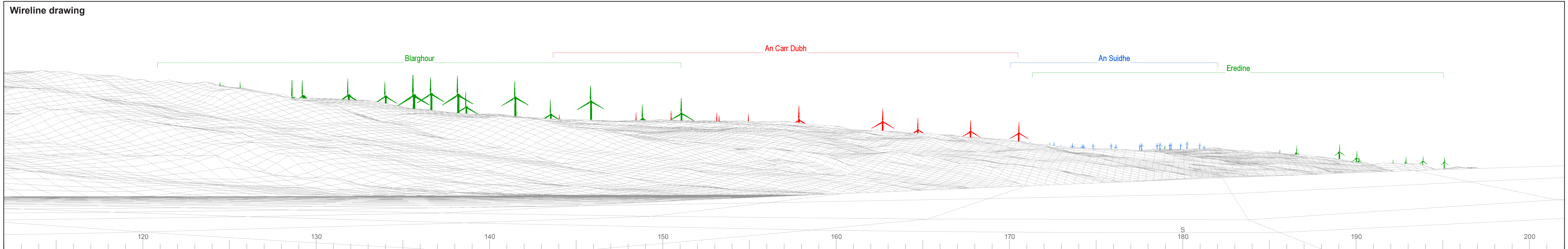


Figure 10.5.16:
Viewpoint CH16 - Carn Dubh, crannog E of Inverinan (SM4175)



- Site boundary
 - + Turbine layout
 - 5km intervals from outermost turbines
 - 45km from outermost turbines
 - o Viewpoint
- Theoretical blade tip visibility (180m)**
- 1-3 turbines visible
 - 4-6 turbines visible
 - 7-9 turbines visible
 - 10-13 turbines visible
- ∠ 53.5° Field of View
- ∠ 90° Field of View

The ZTV is calculated to turbine tip height (180m) from a viewing height of 2m above ground level. The terrain model assumes bare ground and is derived from OS Terrain 50 height data (obtained from Ordnance Survey in July 2019). Earth curvature and atmospheric refraction have been taken into account. The ZTV was calculated using ArcMap 10.8.1 software.



© Crown copyright and database rights 2023. Ordnance Survey data. Licence number: 010031673



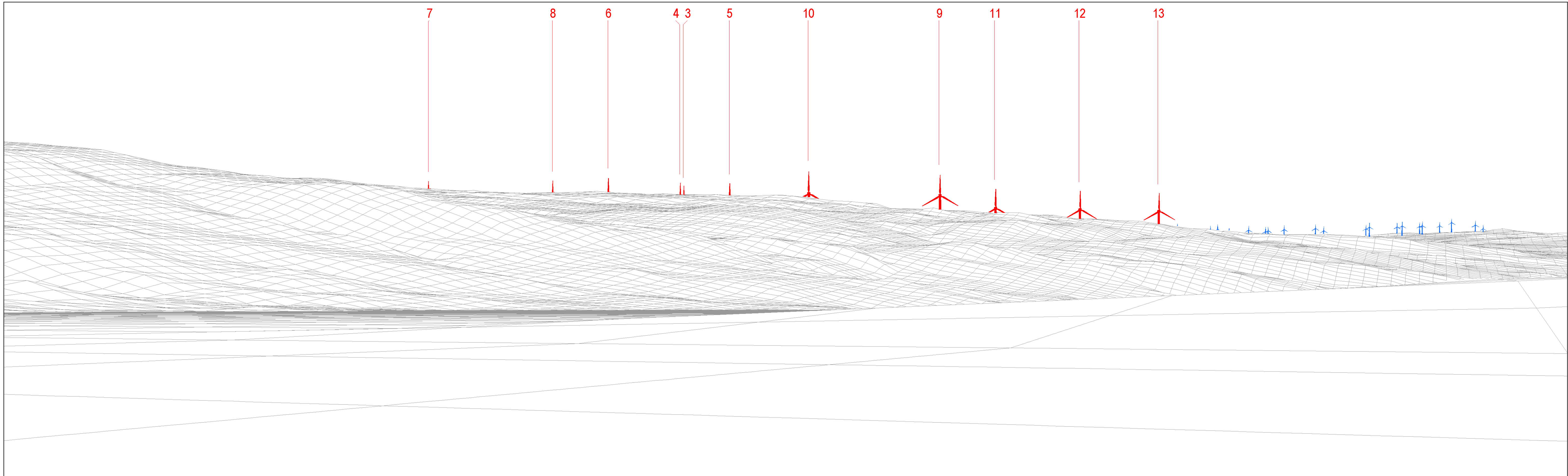
OS reference: 200130E 717751N
 AOD: 35 m
 Direction of view: 157°
 Nearest turbine: 5.48 km

Horizontal field of view: 90° (cylindrical projection)
 Principal distance: 522 mm
 Paper size: 841 x 297 mm (half A1)
 Correct printed image size: 820 x 260 mm

Wind Farm Developments key
 (by status):

Proposed scheme Application
 Operational Scoping
 Under construction Appeal/PLI
 Consented

An Càrr Dubh Wind Farm
Figure: CH16a
CHVP16: Carn Dubh, crannog E of Inverinan (SM4175)



7 8 6 4 3 5 10 9 11 12 13

Wireline drawing

View flat at a comfortable arm's length



OS reference: 200130E 717751N
 AOD: 35 m
 Direction of view: 157°
 Nearest turbine: 5.48 km

Horizontal field of view: 53.5° (planar projection)
 Principal distance: 812.5 mm
 Paper size: 841 x 297 mm (half A1)
 Correct printed image size: 820 x 260 mm

Wind Farm Developments key
 (by status):
 Proposed scheme
 Operational

An Càrr Dubh Wind Farm
 Figure: CH16b
 CHVP16: Carn Dubh, crannog E of Inverinan (SM4175)

© Crown copyright and database rights 2023 Ordnance Survey data. Licence number: 0100051673