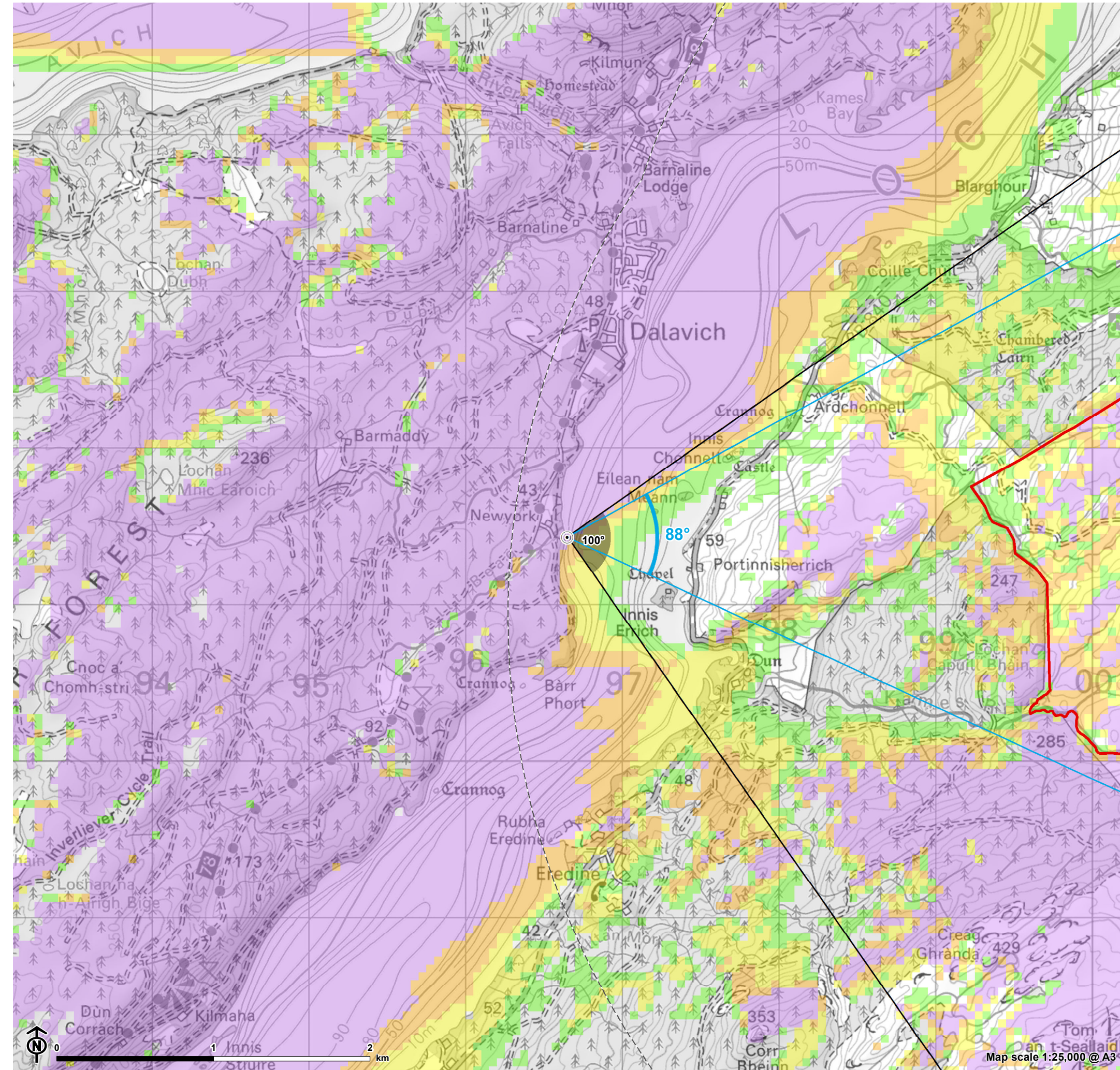


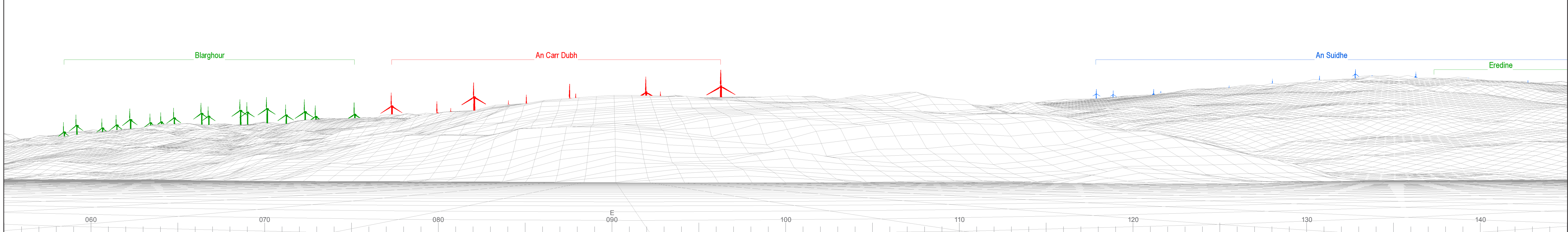
Figure 10.5.3:
Viewpoint CH3 - Ardchnonell Castle (SM291) and Innis Errich (SM4214) from New York Jetty



- Site boundary
 - Turbine layout
 - 5km intervals from outermost turbines
 - 45km from outermost turbines
 - Viewpoint
- Theoretical blade tip visibility (180m)**
- 1-3 turbines visible
 - 4-6 turbines visible
 - 7-9 turbines visible
 - 10-13 turbines visible
 - 53.5° Field of View
 - 90° Field of View

The ZTV is calculated to turbine tip height (180m) from a viewing height of 2m above ground level. The terrain model assumes bare ground and is derived from OS Terrain 50 height data (obtained from Ordnance Survey in July 2019). Earth curvature and atmospheric refraction have been taken into account. The ZTV was calculated using ArcMap 10.8.1 software.

Wireline drawing



© Crown copyright and database rights 2023. Ordnance Survey data. Licence number: 0100031073



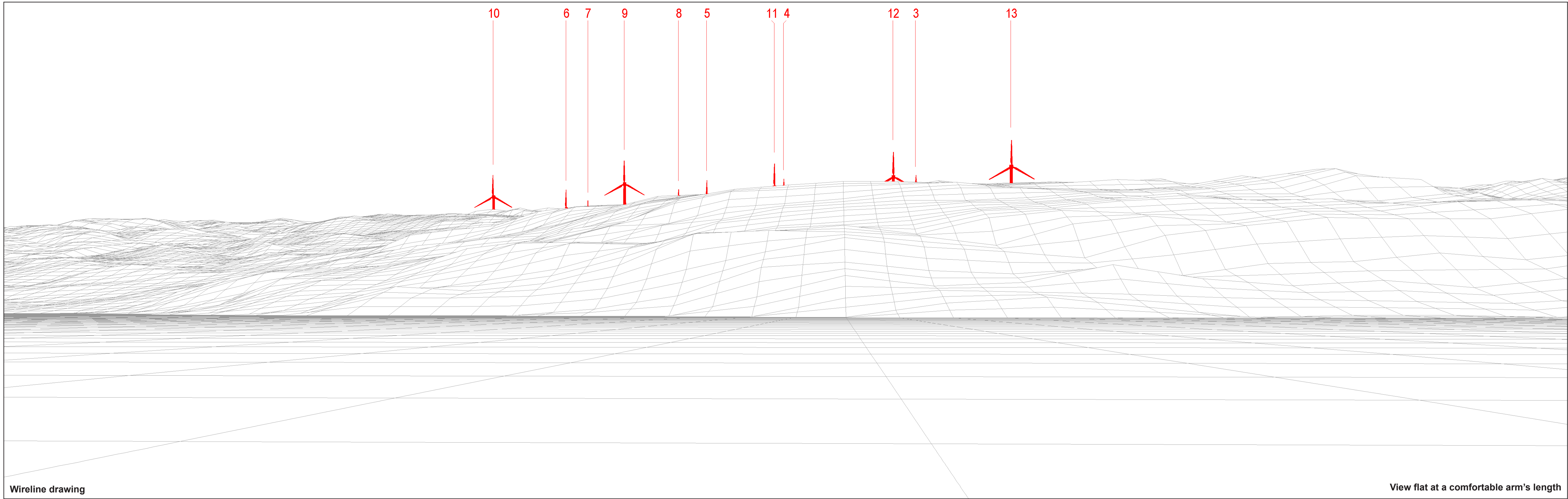
OS reference: 196649E 711428N
 AOD: 37.44 m
 Direction of view: 100°
 Nearest turbine: 4.65 km

Horizontal field of view: 90° (cylindrical projection)
 Principal distance: 522 mm
 Paper size: 841 x 297 mm (half A1)
 Correct printed image size: 820 x 260 mm

Wind Farm Developments key
 (by status):

- Proposed scheme
- Operational
- Under construction
- Consented
- Application
- Scoping
- Appeal/PLI

An Carr Dubh Wind Farm
Figure: CH3a
 CHVP03: Ardchnonell Castle (SM291) and Innis Errich (SM4214) from New York Jetty



© Crown copyright and database rights 2023 Ordnance Survey data Licence number: 0100051673

Wireline drawing

View flat at a comfortable arm's length



OS reference: 196649E 711428N
 AOD: 37.44 m
 Direction of view: 88°
 Nearest turbine: 4.65 km

Horizontal field of view: 53.5° (planar projection)
 Principal distance: 812.5 mm
 Paper size: 841 x 297 mm (half A1)
 Correct printed image size: 820 x 260 mm

Wind Farm Developments key
 (by status):
 Proposed scheme
 Operational

An Càrr Dubh Wind Farm
 Figure: CH3b
 CHVP03: Ardchonnell Castle (SM291) and Innis Errich (SM4214) from New York Jetty



Photomontage

View flat at a comfortable arm's length



OS reference: 196649E 711428N
AOD: 37.44 m
Direction of view: 88°
Nearest turbine: 4.65 km

Horizontal field of view: 53.5° (planar projection)
Principal distance: 812.5 mm
Paper size: 841 x 297 mm (half A1)
Correct printed image size: 820 x 260 mm

Camera: NIKON D600
Lens: 50mm Fixed Focal Length
Camera height: 1.5 m

Photography Date: 27/05/2021
Photography Time: 14:20:00

An Càrr Dubh Wind Farm
Figure: CH3c
CHVP03: Ardchnonell Castle (SM291) and Innis Errich (SM4214) from New York Jetty

© Crown copyright and database rights 2023 Ordnance Survey data. Licence number: 0100051673