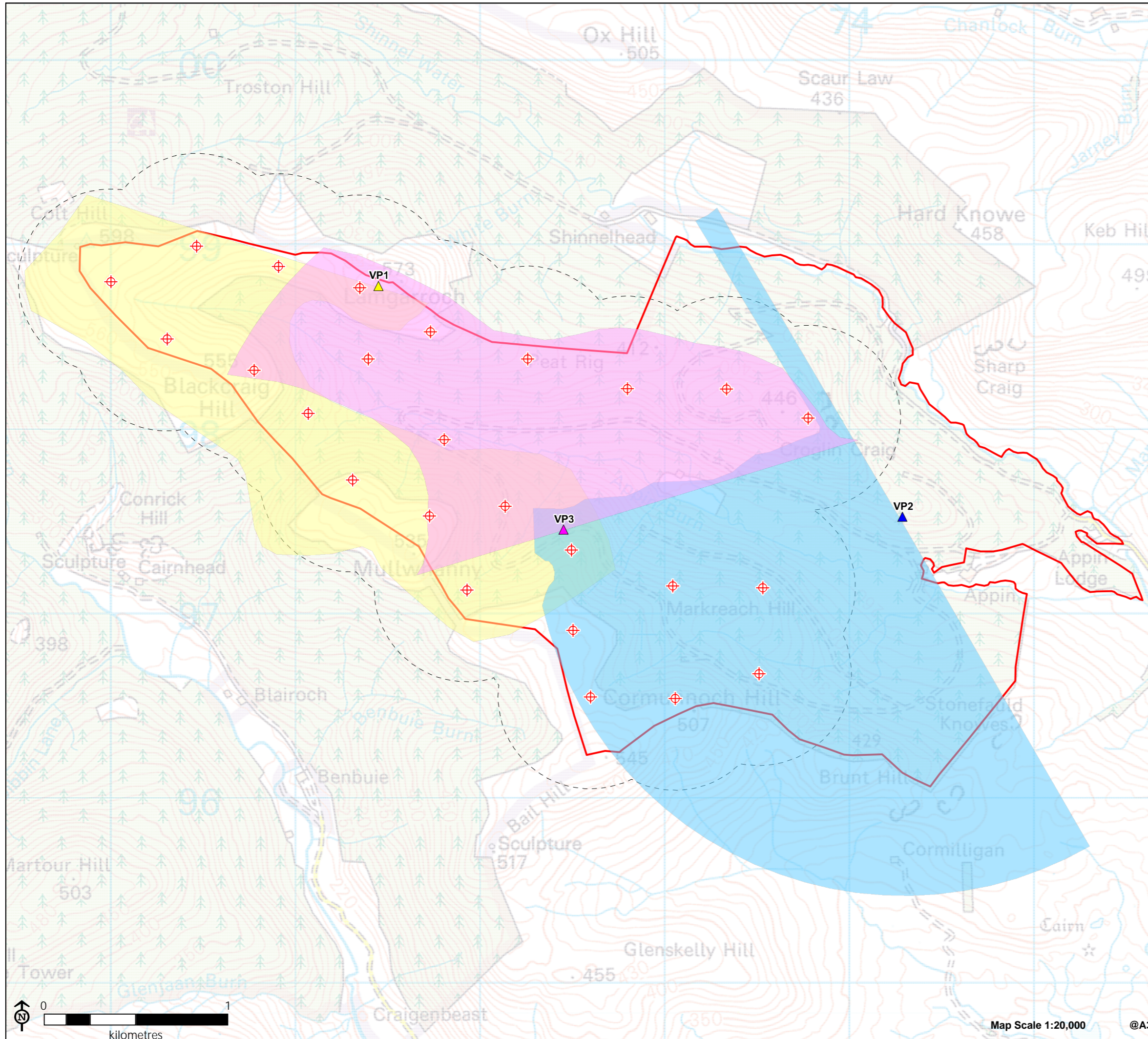


Appin Wind Farm

for Statkraft

Figure 7.2: VP Flight Activity Survey Viewsheds



- Site boundary
- Turbines (Scoping Layout)
- 500m proposed turbine buffer
- Vantage Point (VP) Locations
 - VP1 (NX 71451 98775)
 - VP2 (NX 74391 97573)
 - VP3 (NX 72453 97455)
- VP1 2km viewshed
- VP2 2km viewshed
- VP3 2km viewshed

