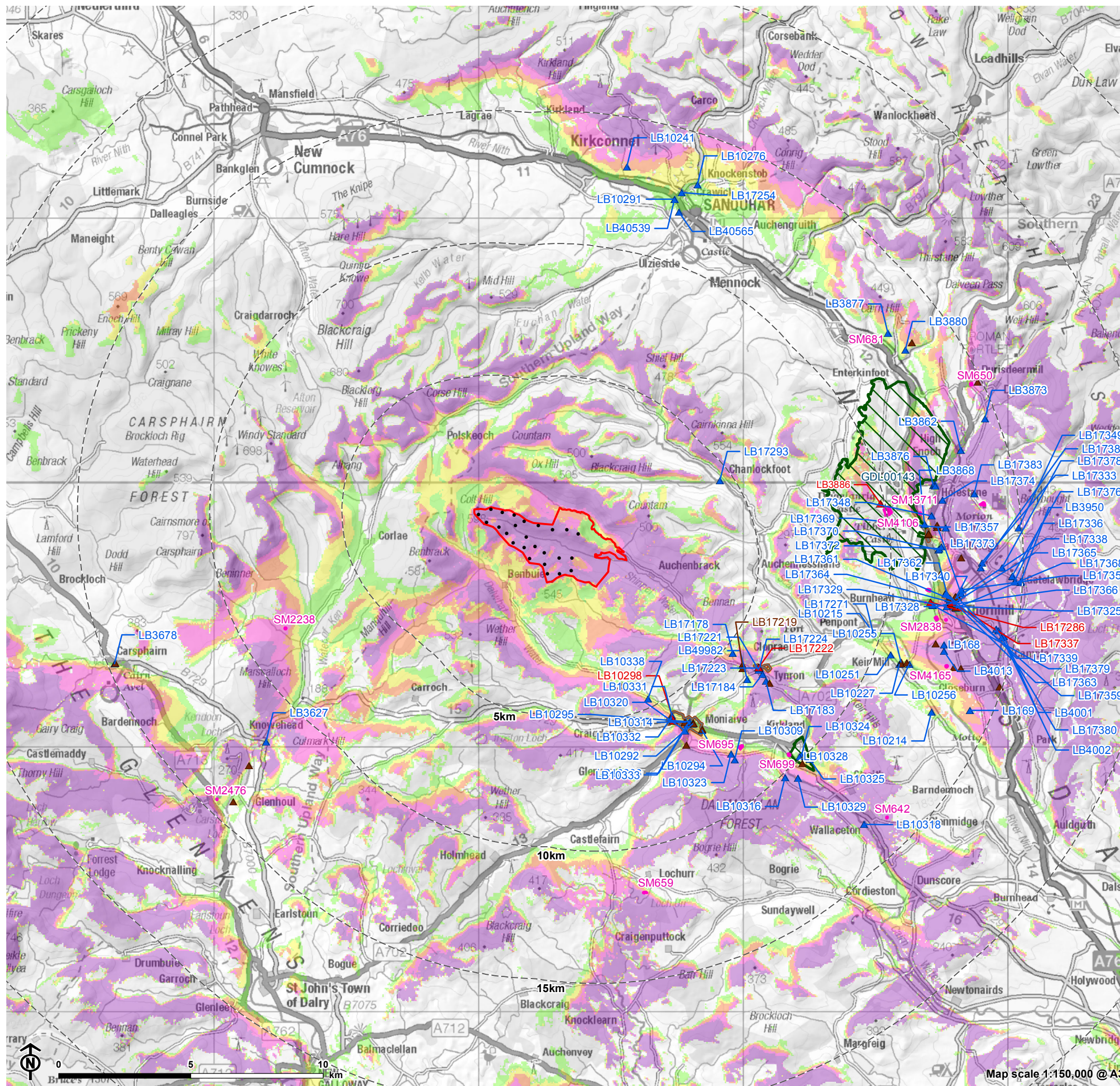


Figure 8.1: Designated Cultural Heritage Assets within the study area



- Turbines (Scoping Layout)
- ▭ Site boundary
- - - 5km buffer intervals from the Site boundary
- ▭ Scheduled monument
- ▭ Conservation Area
- ▭ Gardens and Designated Landscape
- Listed building**
- ▲ Category A
- ▲ Category B
- ▲ Category C\*
- Theoretical Visibility**
- 1 - 5 Turbines Visible
- 6 - 10 Turbines Visible
- 11 - 15 Turbines Visible
- 16 - 20 Turbines Visible
- 21 - 25 Turbines Visible
- Note for Labels:**
- 'LB' = Listed Buildings
- 'SM' = Scheduled Monuments
- 'GDL' = Gardens and Designated Landscapes
- Colour coding of labels corresponds with that in general key above.
- The numbers referenced are the numbers of the assets as cited in official records.

The ZTV is calculated to turbine tip height (230m). The terrain model assumes bare ground and is derived from OS Terrain 50 height data. Earth curvature and atmospheric refraction have been taken into account. The ZTV was calculated using ArcMap 10.8.1.

\* Only Category C buildings that have been scoped are labelled

Map scale 1:150,000 @ A3