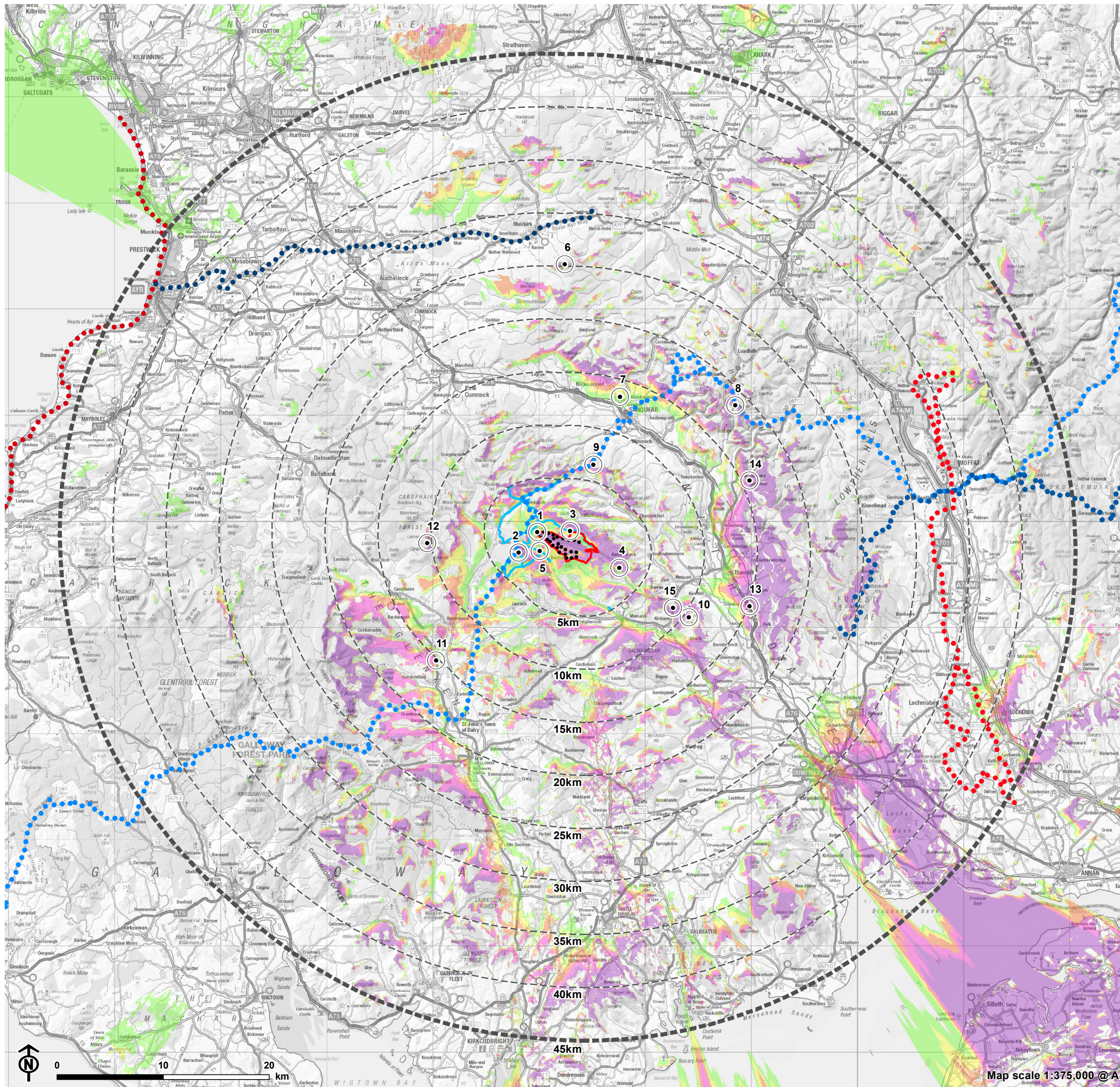


Figure 4.1b – Zone of Theoretical Visibility (Scoping Layout [Hub Height]) and Viewpoint Locations



- Turbines (Scoping Layout)
- ▭ Site boundary
- - - 5km buffer intervals from the Site boundary
- - - 45km buffer from the Site boundary
- Theoretical Visibility**
- 1 - 5 Turbines Visible
- 6 - 10 Turbines Visible
- 11 - 15 Turbines Visible
- 16 - 20 Turbines Visible
- 21 - 25 Turbines Visible
- Recreation**
- Annandale Way
- Ayrshire Coastal Path
- River Ayr Way
- Romans and Reivers Route
- Southern Upland Way
- Core Path (mapped to 5km)
- Viewpoint location
- 1, Colt Hill
- 2, Benbrack
- 3, Shinnelhead
- 4, Shinnel Water Valley near Craigencoon
- 5, Cairnhead Sculpture
- 6, Cairn Table
- 7, Crawick Multiverse
- 8, Lowther Hill
- 9, Southern Upland Way Whing Head
- 10, Wauk Hill
- 11, A713 Stroangassel
- 12, Cairnsmore of Carsphairn
- 13, A76 south of Closeburn
- 14, Durisdeer Rig
- 15, A702 Shinnel Water Valley

The ZTV is calculated to turbine tip height (155m). The terrain model assumes bare ground and is derived from OS Terrain 50 height data. Earth curvature and atmospheric refraction have been taken into account. The ZTV was calculated using ArcMap 10.8.1.