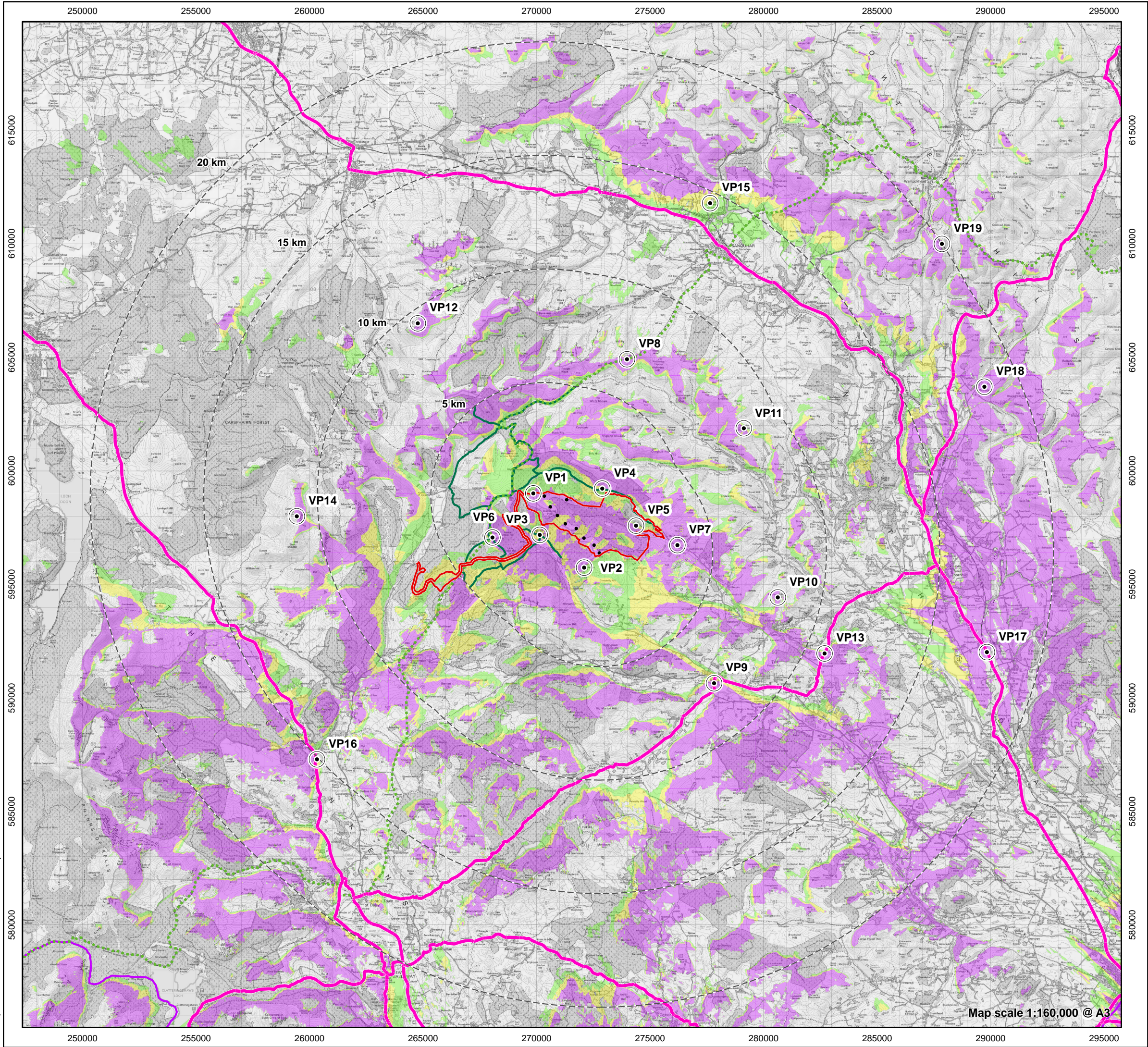


© Crown copyright and database rights (2025) Ordnance Survey AC0000808122©
NatureScot. Contains Ordnance Survey data © Crown copyright and database right 2025
Contains public sector information licensed under the Open Government Licence v3.0



- Site boundary
- Turbine
- 5 km Interval from Outermost Turbines
- A Road
- National Cycle Network
- Core Path within 5 km of Outermost Turbines
- Southern Upland Way

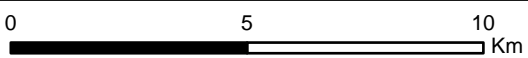
Zone of Theoretical Visibility (Tip Height 200 m)

- 1 - 3 Turbine Blade Tips Visible
- 4 - 6 Turbine Blade Tips Visible
- 7 - 9 Turbine Blade Tips Visible

- Viewpoint

VP1: Colt Hill, Striding Arch	VP11: Cairnkinna Hill
VP2: Bail Hill, Striding Arch	VP12: Blackcraig Hill
VP3: Cairnhead, Striding Arch	VP13: A702, Shinnel Water Valley
VP4: Shinnelhead	VP14: Cairnsmore of Carsphairn
VP5: High Appin	VP15: Crawick Multiverse
VP6: Benbrack, Striding Arch	VP16: A713, near Stroangassel
VP7: Shinnel Water Valley near Craigencon	VP17: A76, south of Closeburn
VP8: SUW near Cloud Hill	VP18: Durisdeer Rig
VP9: Moniaive	VP19: East Mount Lowther
VP10: Auchengibbert Hill	

Note:
The ZTV is calculated to turbine tip height (200 m) from a viewing height of 2 m above ground level. The terrain model assumes bare ground and is derived from OS Terrain 5 height data. Earth curvature and atmospheric refraction have been taken into account. The ZTV was calculated using ArcGIS Pro 3.4.0 software.



Source: LUC, Pell Frischmann, OS, SG, Sustrans

Produced By: HD
Checked By: NE
Version: 00

Date: 08/05/2025
Ref: 11634_EIA_LVIA

Figure 5.2b
Blade Tip Height (200 m) Zone of Theoretical Visibility (ZTV) and Visual Receptors