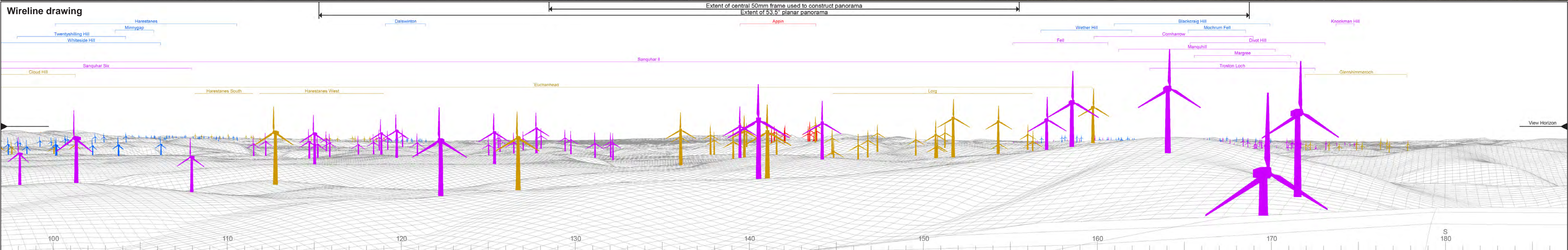




Baseline photograph

This image provides landscape and visual context only

Wireline drawing



OS reference: 264775E 606400N
AOD: 697 m
Direction of view: 142°
Nearest turbine: 9.35 km

Horizontal field of view: 90° (cylindrical projection)
Principal distance: 522 mm
Paper size: 841 x 297 mm (half A1)
Correct printed image size: 820 x 260 mm

Camera: Nikon D750
Lens: 50mm Fixed Focal Length
Camera height: 1.5 m

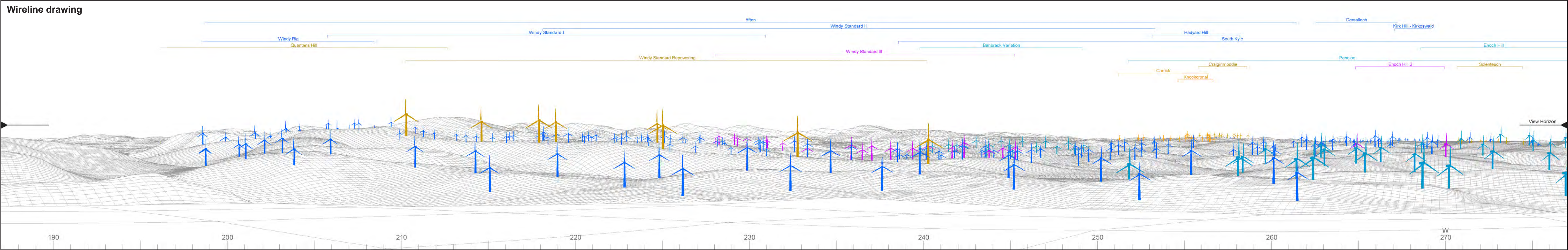
Photography Date: 17/08/2022
Photography Time: 19:59

Wind Farm Developments key
(by status):

Proposed scheme
Operational
Under construction
Consented

Application
Scoping
Appeal/PLI

Appin Wind Farm
Figure: 5.22a
Viewpoint 12: Blackcraig Hill



OS reference: 264775E 606400N
AOD: 697 m
Direction of view: 232°
Nearest turbine: 9.35 km

Horizontal field of view: 90° (cylindrical projection)
Principal distance: 522 mm
Paper size: 841 x 297 mm (half A1)
Correct printed image size: 820 x 260 mm

Camera: Nikon D750
Lens: 50mm Fixed Focal Length
Camera height: 1.5 m

Photography Date: 17/08/2022
Photography Time: 19:59

Wind Farm Developments key
(by status):

Proposed scheme
Operational
Under construction
Consented

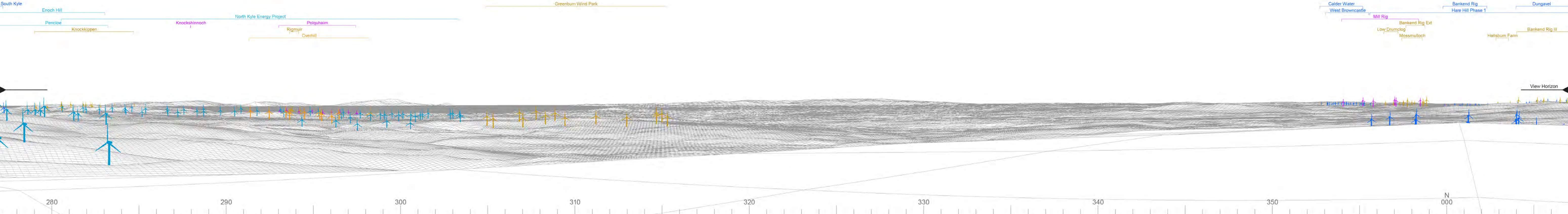
Application
Scoping
Appeal/PLI



Baseline photograph

This image provides landscape and visual context only

Wireline drawing



OS reference: 264775E 606400N
AOD: 697 m
Direction of view: 322°
Nearest turbine: 9.35 km

Horizontal field of view: 90° (cylindrical projection)
Principal distance: 522 mm
Paper size: 841 x 297 mm (half A1)
Correct printed image size: 820 x 260 mm

Camera: Nikon D750
Lens: 50mm Fixed Focal Length
Camera height: 1.5 m

Photography Date: 17/08/2022
Photography Time: 19:59

Wind Farm Developments key
(by status):

Proposed scheme
Operational
Under construction
Consented

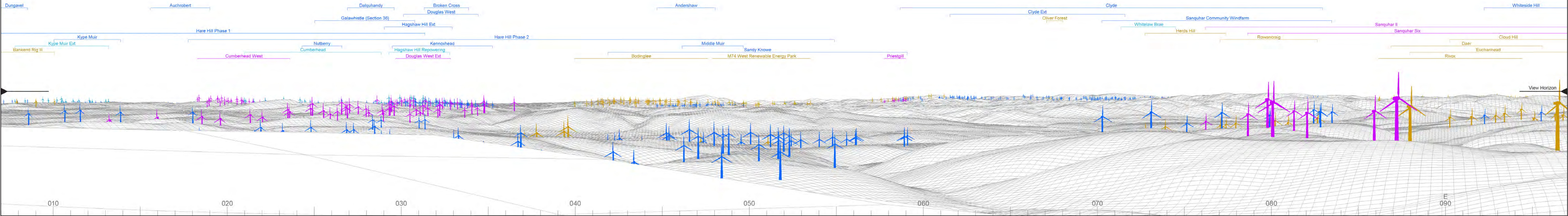
Application
Scoping
Appeal/PLI



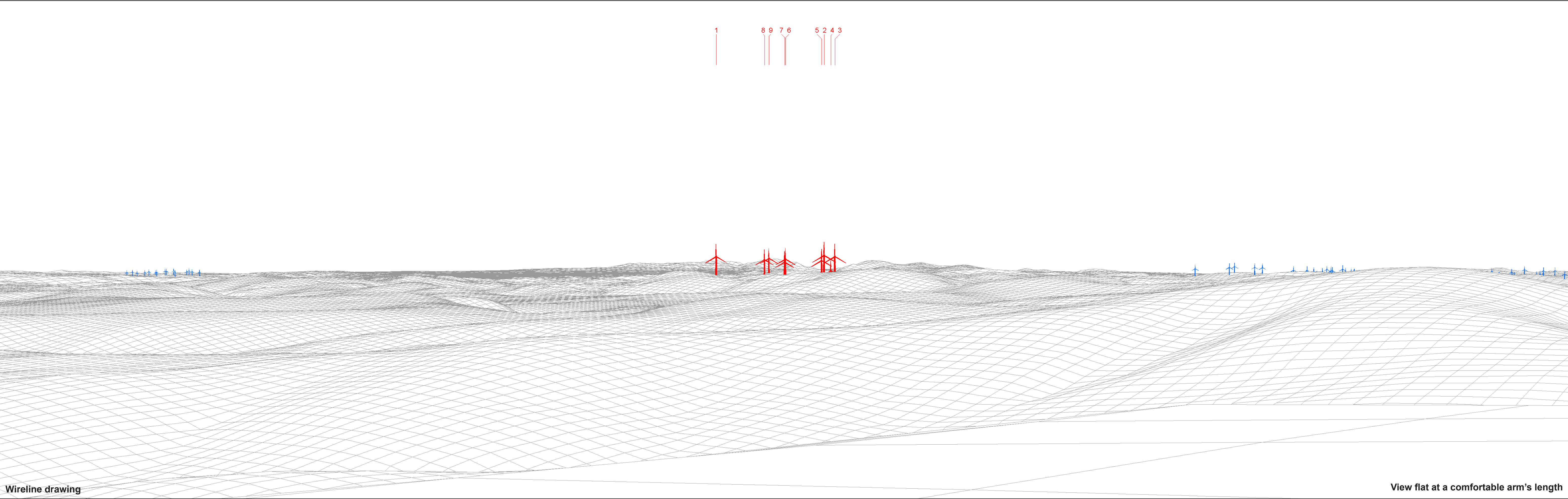
Baseline photograph

This image provides landscape and visual context only

Wireline drawing



© Crown copyright and database rights 2021 Ordnance Survey data Licence number: 0100051673



Wireline drawing

View flat at a comfortable arm's length



OS reference:	264775E 606400N	Horizontal field of view:	53.5° (planar projection)
AOD:	697 m	Principal distance:	812.5 mm
Direction of view:	142°	Paper size:	841 x 297 mm (half A1)
Nearest turbine:	9.35 km	Correct printed image size:	820 x 260 mm

Wind Farm Developments key
(by status):

Proposed scheme
Operational
Under construction

Notes:
1) Aviation lighting will be positioned on the following turbine nacelles (hubs):
T1, T2, T5, T9

Appin Wind Farm
Figure: 5.22e
Viewpoint 12: Blackcraig Hill



Photomontage

View flat at a comfortable arm's length



OS reference:	264775E 606400N	Horizontal field of view:	53.5° (planar projection)	Camera:	Nikon D750	Photography Date:	17/08/2022
AOD:	697 m	Principal distance:	812.5 mm	Lens:	50mm Fixed Focal Length	Photography Time:	19:59
Direction of view:	142°	Paper size:	841 x 297 mm (half A1)	Camera height:	1.5 m		
Nearest turbine:	9.35 km	Correct printed image size:	820 x 260 mm				

Appin Wind Farm
Figure: 5.22f
Viewpoint 12: Blackcraig Hill