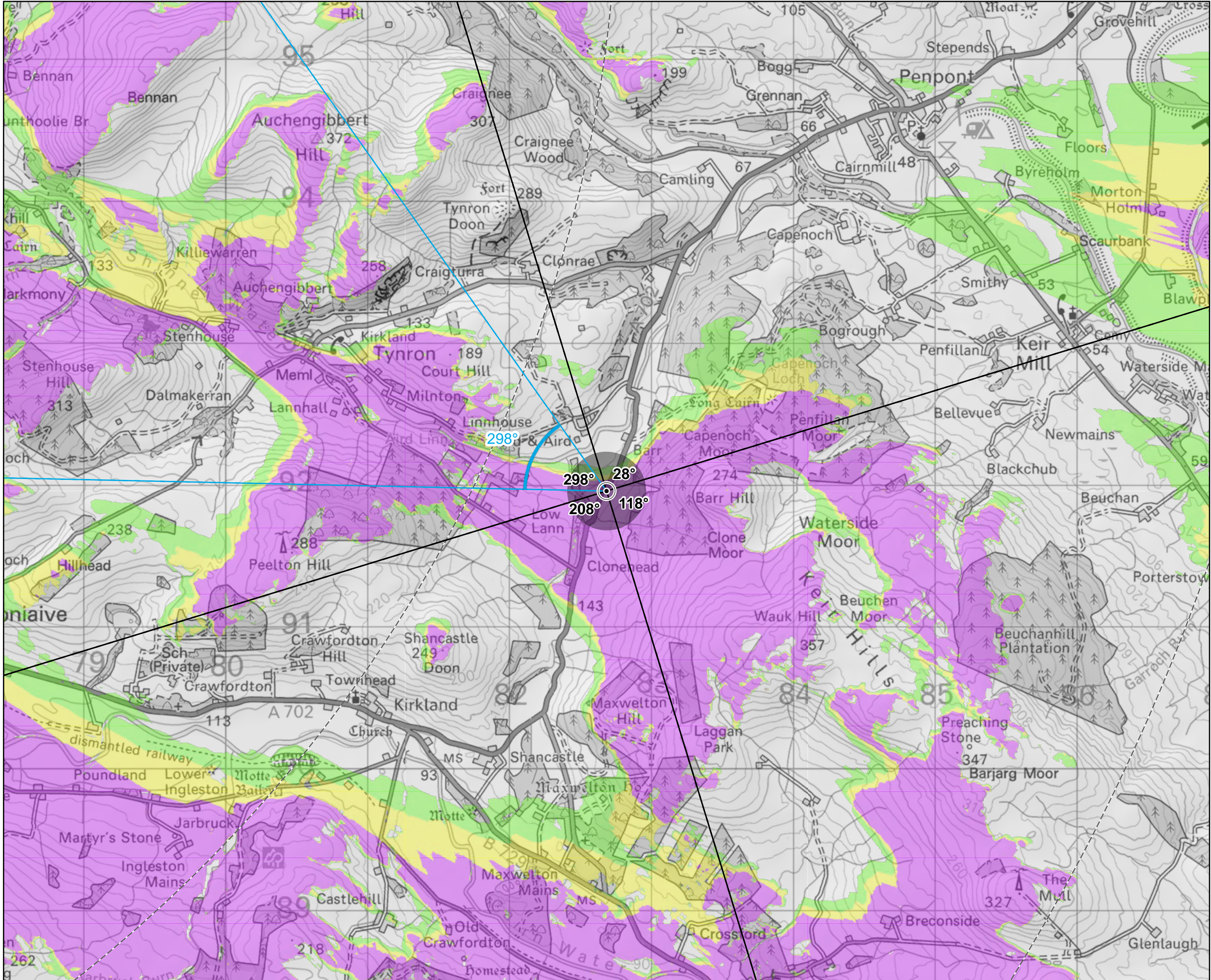
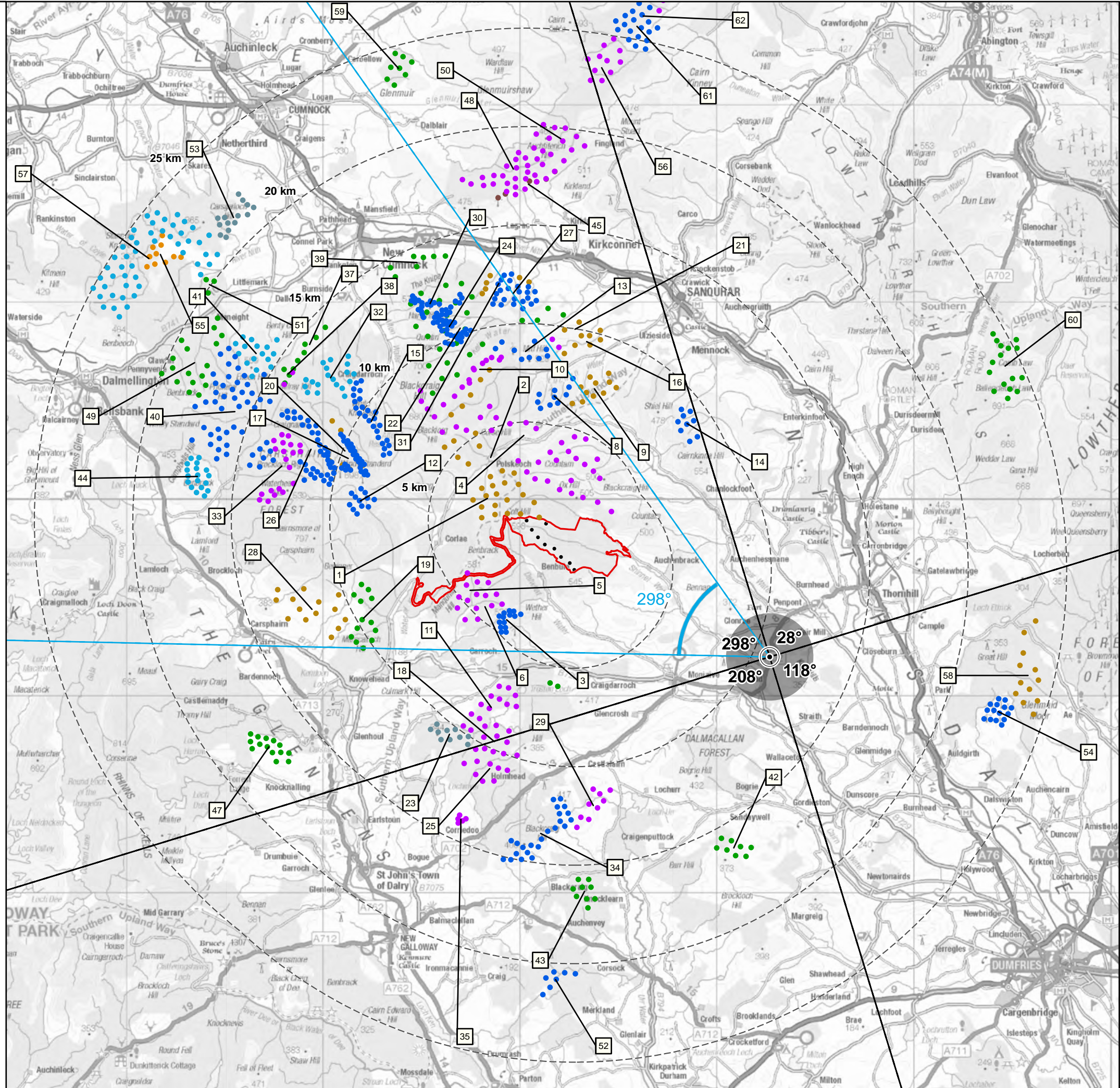


- Wind Farm
- 1: Lorg
 - 2: Eucharhead
 - 3: Wether Hill
 - 4: Sanquhar II
 - 5: Manquhill
 - 6: Cornharrow
 - 7: Knockaughlie Hill
 - 8: Whiteside Hill
 - 9: Cloud Hill
 - 10: Sanquhar Six
 - 11: Troston Loch
 - 12: Windy Rig
 - 13: Sanquhar Community Windfarm
 - 14: Twentyshilling Hill
 - 15: Afton
 - 16: Rowancraig
 - 17: Windy Standard I
 - 18: Margree
 - 19: Shepherds Rig
 - 20: Windy Standard I Repowering
 - 21: Herds Hill
 - 22: Hare Hill Repowering
 - 23: Glenshimmeroch
 - 24: Hare Hill Phase 2
 - 25: Divot Hill
 - 26: Windy Standard II
 - 27: Sandy Knowe
 - 28: Quantans Hill
 - 29: Fell
 - 30: Hare Hill Phase 1
 - 31: Sandy Knowe Extension
 - 32: Pencloe
 - 33: Windy Standard III
 - 34: Blackcraig Hill
 - 35: Knockman Hill
 - 36: Enoch Hill 2
 - 37: Pencloe Extension
 - 38: Monquhill
 - 39: Blackwood (East Ayrshire)
 - 40: South Kyle
 - 41: Enoch Hill
 - 42: Collieston
 - 43: Garcorgo
 - 44: Benbrack Variation
 - 45: Glenmuckloch
 - 47: Knocknalling
 - 48: Lethans
 - 49: South Kyle 2
 - 50: Lethans Extension
 - 51: Lanehead
 - 52: Mochrum Fell
 - 53: Greenburn Wind Park
 - 54: Dalswinton
 - 55: Overhill
 - 56: Kennoxhead Extension II
 - 57: North Kyle Energy Project
 - 58: Harestanes West
 - 59: Drum
 - 60: Watchman Energy Park
 - 61: Kennoxhead Extension



- Site Boundary
- Turbine
- 5 km Interval from Outermost Turbines
- Wind Farm Location (By Status)
- Operational
 - Under Construction
 - Consented
 - Application Submitted
 - Application Submitted (Previously Consented)
 - Appeal/Public Inquiry
 - Design/Scoping
 - Design/Scoping (Previously Consented)
- Viewpoint
- 53.5° Field of View
 - 90° Field of View
- Zone of Theoretical Visibility (Tip Height 200 m)
- 1 - 3 Turbine Blade Tips Visible
 - 4 - 6 Turbine Blade Tips Visible
 - 7 - 9 Turbine Blade Tips Visible

Left hand map: 0 2.5 5 10 Km
Right hand map: 0 0.5 1 Km
Map scale 1:200,000 @ A3
Map scale 1:25,000 @ A3

Source: LUC, Pell Frischmann, OS

Produced By: HD
Checked By: NE
Version: 00
Date: 06/05/2025
Ref: 11634_VPs_DoublePage_A3L

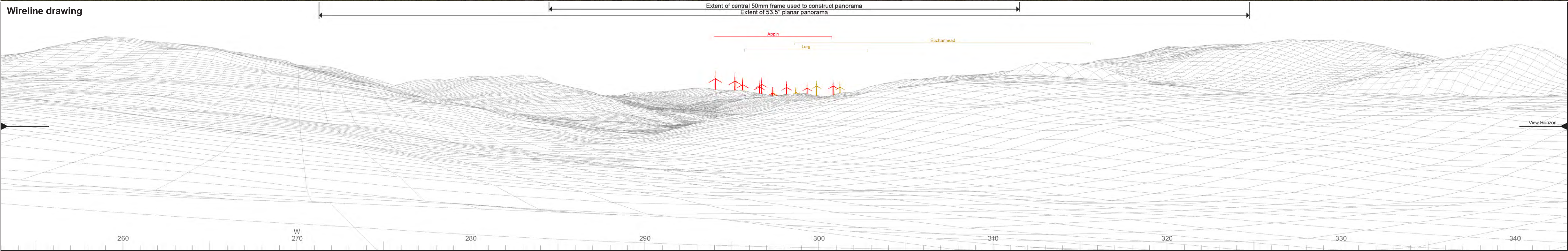
Figure 5.23
Viewpoint 13: A702, Shinnel Water Valley



Baseline photograph

This image provides landscape and visual context only

Wireline drawing



© Crown copyright and database rights 2021 Ordnance Survey data Licence number: 0100031673

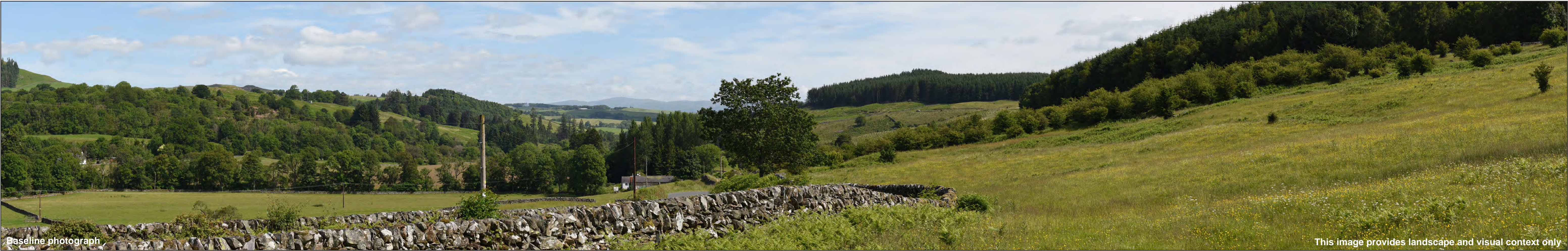


OS reference:	282685E 591957N	Horizontal field of view:	90° (cylindrical projection)	Camera:	Nikon D750	Photography Date:	20/06/2022
AOD:	110 m	Principal distance:	522 mm	Lens:	50mm Fixed Focal Length	Photography Time:	10:37
Direction of view:	298°	Paper size:	841 x 297 mm (half A1)	Camera height:	1.5 m		
Nearest turbine:	10.86 km	Correct printed image size:	820 x 260 mm				

Wind Farm Developments key
(by status):

Proposed scheme	Application
Operational	Scoping
Under construction	Appeal/PLI
Consented	

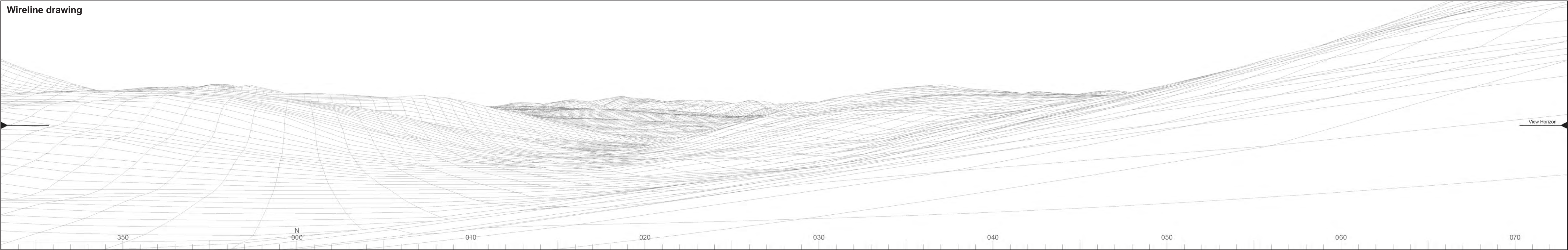
Appin Wind Farm
Figure: 5.23a
Viewpoint 13: A702, Shinnel Water Valley



Baseline photograph

This image provides landscape and visual context only

Wireline drawing

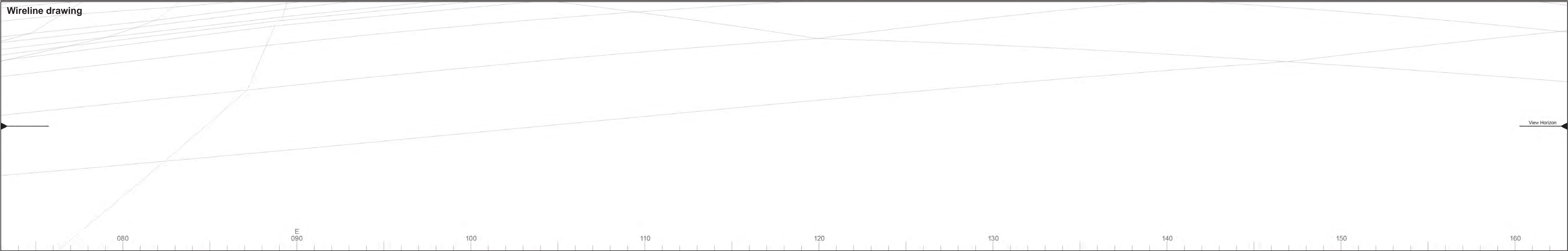




Baseline photograph

This image provides landscape and visual context only

Wireline drawing



OS reference: 282685E 591957N
AOD: 110 m
Direction of view: 118°
Nearest turbine: 10.86 km

Horizontal field of view: 90° (cylindrical projection)
Principal distance: 522 mm
Paper size: 841 x 297 mm (half A1)
Correct printed image size: 820 x 260 mm

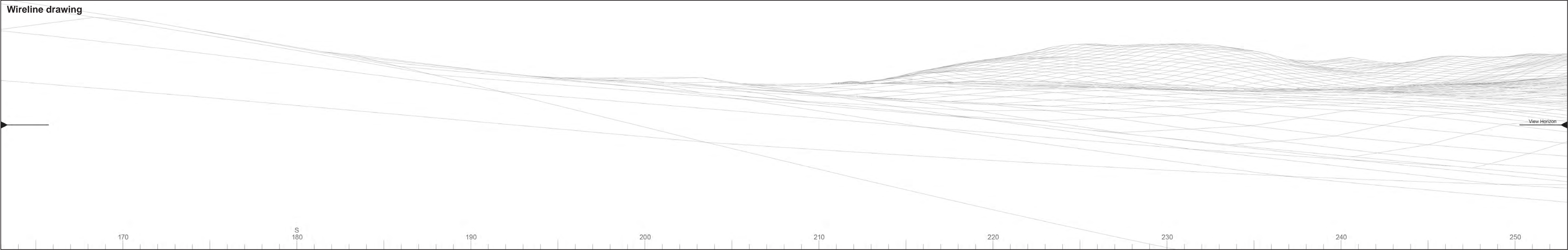
Camera: Nikon D750
Lens: 50mm Fixed Focal Length
Camera height: 1.5 m

Photography Date: 20/06/2022
Photography Time: 10:37

Wind Farm Developments key
(by status):

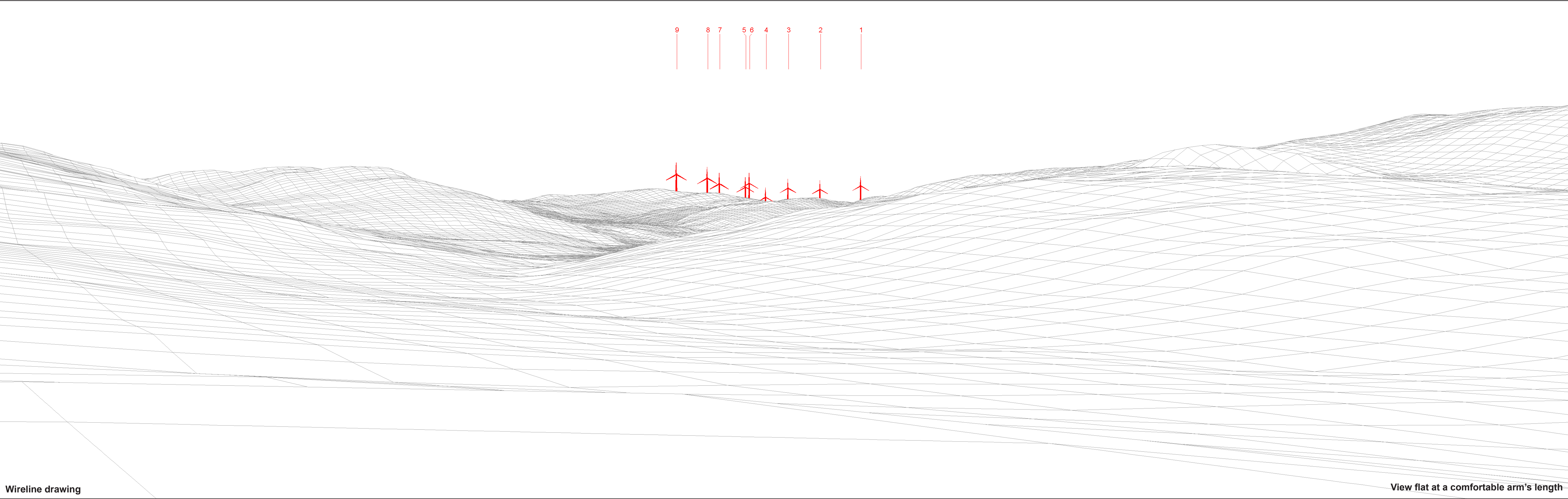
Proposed scheme
Operational
Under construction
Consented

Application
Scoping
Appeal/PLI



Appin Wind Farm
Figure: 5.23d
Viewpoint 13: A702, Shinnel Water Valley

© Crown copyright and database rights 2021 Ordnance Survey data Licence number: 0100051673



Wireline drawing

View flat at a comfortable arm's length



OS reference:	282685E 591957N	Horizontal field of view:	53.5° (planar projection)
AOD:	110 m	Principal distance:	812.5 mm
Direction of view:	298°	Paper size:	841 x 297 mm (half A1)
Nearest turbine:	10.86 km	Correct printed image size:	820 x 260 mm

Wind Farm Developments key
(by status):

Proposed scheme
Operational
Under construction

Notes:
1) Aviation lighting will be positioned on the following turbine nacelles (hubs):
T1, T2, T5, T9

Appin Wind Farm
Figure: 5.23e
Viewpoint 13: A702, Shinnel Water Valley



Photomontage

View flat at a comfortable arm's length



OS reference:	282685E 591957N	Horizontal field of view:	53.5° (planar projection)	Camera:	Nikon D750	Photography Date:	20/06/2022
AOD:	110 m	Principal distance:	812.5 mm	Lens:	50mm Fixed Focal Length	Photography Time:	10:37
Direction of view:	298°	Paper size:	841 x 297 mm (half A1)	Camera height:	1.5 m		
Nearest turbine:	10.86 km	Correct printed image size:	820 x 260 mm				

Appin Wind Farm
Figure: 5.23f
Viewpoint 13: A702, Shinnel Water Valley