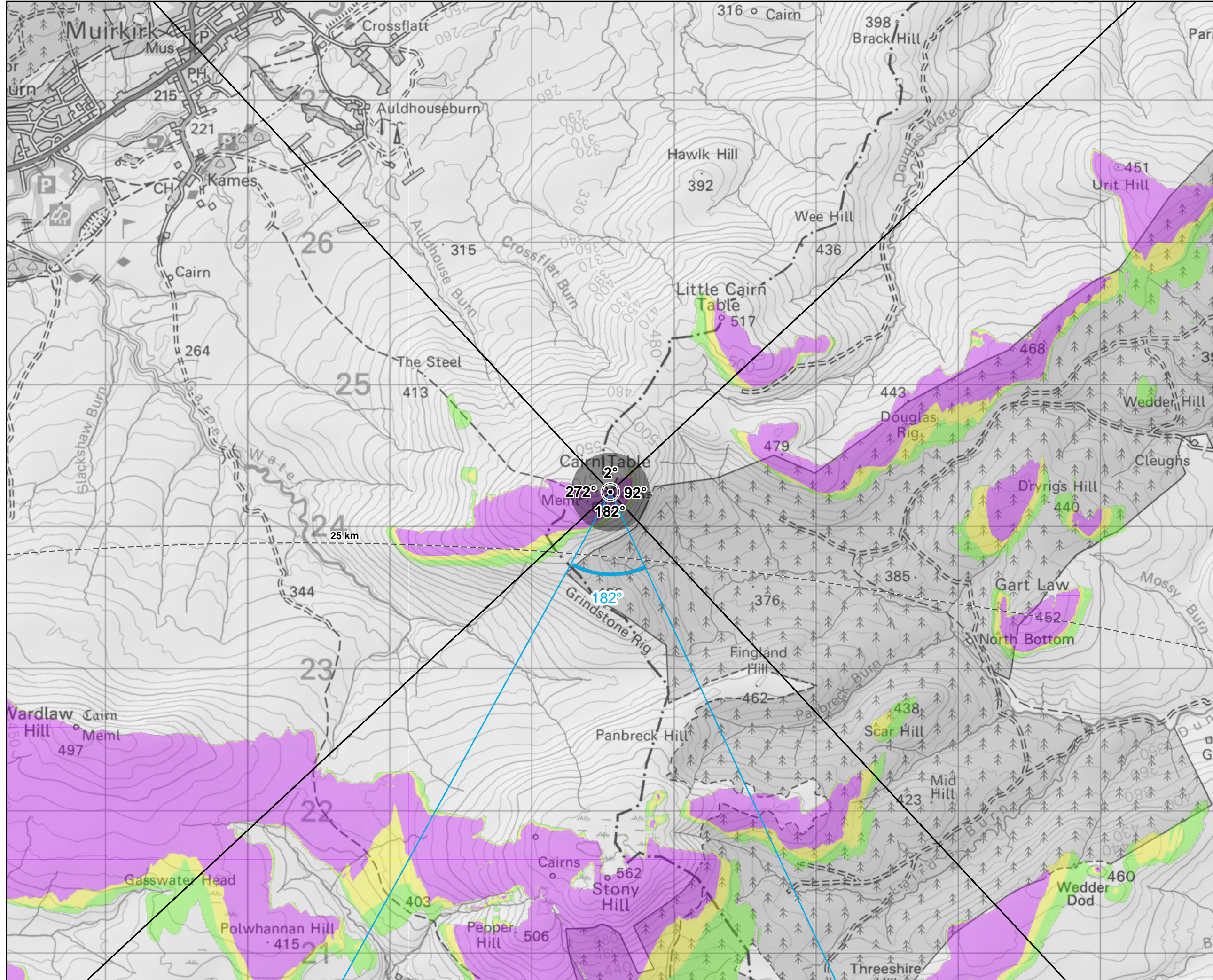
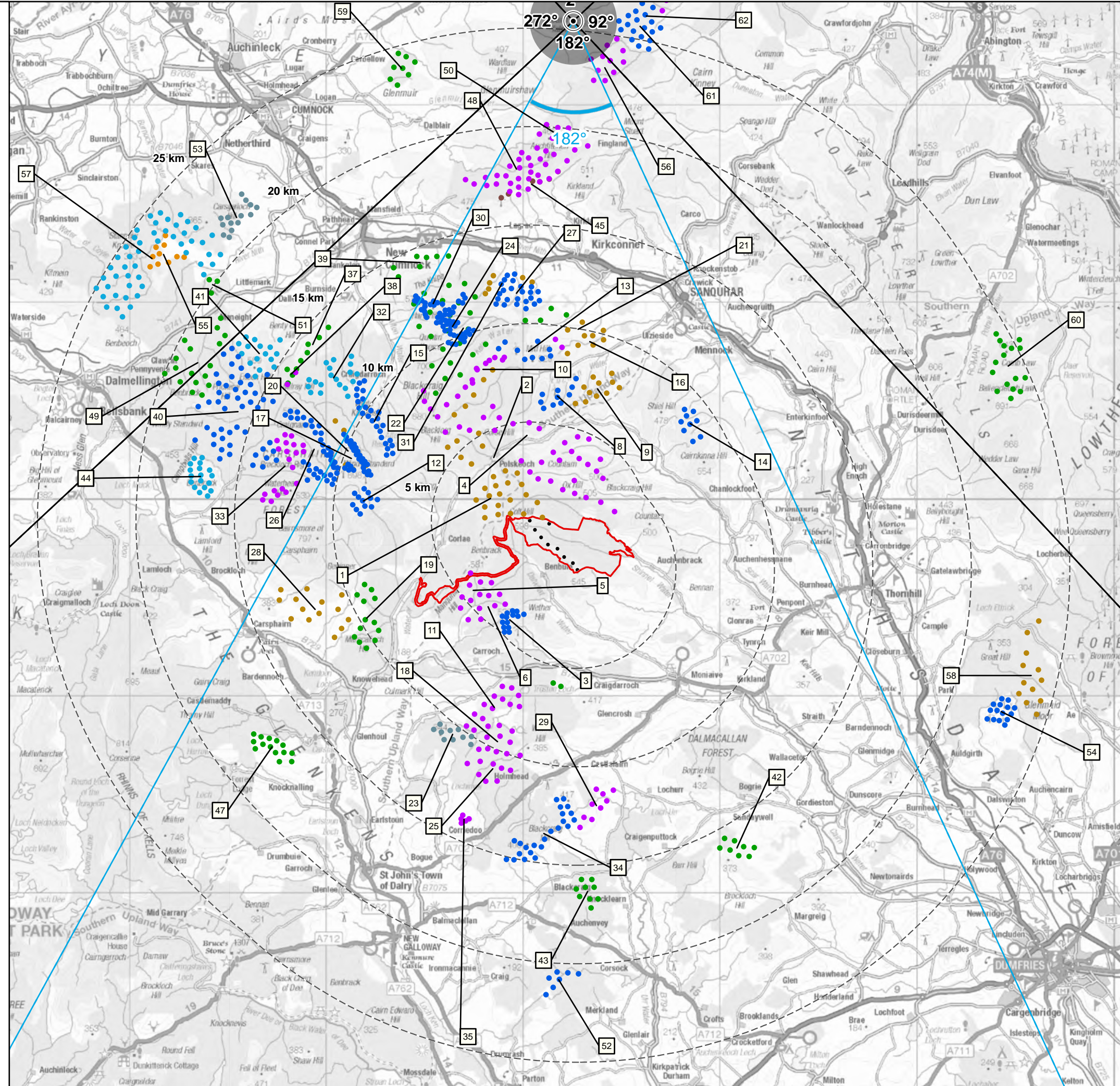




- Wind Farm
- 1: Lorg
 - 2: Eucharhead
 - 3: Wether Hill
 - 4: Sanquhar II
 - 5: Manquhill
 - 6: Cornharrow
 - 7: Knockaughlie Hill
 - 8: Whiteside Hill
 - 9: Cloud Hill
 - 10: Sanquhar Six
 - 11: Troston Loch
 - 12: Windy Rig
 - 13: Sanquhar Community Windfarm
 - 14: Twentyshilling Hill
 - 15: Afton
 - 16: Rowancraig
 - 17: Windy Standard I
 - 18: Margree
 - 19: Shepherds Rig
 - 20: Windy Standard I Repowering
 - 21: Herds Hill
 - 22: Hare Hill Repowering
 - 23: Glenshimmeroch
 - 24: Hare Hill Phase 2
 - 25: Divot Hill
 - 26: Windy Standard II
 - 27: Sandy Knowe
 - 28: Quantans Hill
 - 29: Fell
 - 30: Hare Hill Phase 1
 - 31: Sandy Knowe Extension
 - 32: Pencloe
 - 33: Windy Standard III
 - 34: Blackcraig Hill
 - 35: Knockman Hill
 - 36: Enoch Hill 2
 - 37: Pencloe Extension
 - 38: Monquhill
 - 39: Blackwood (East Ayrshire)
 - 40: South Kyle
 - 41: Enoch Hill
 - 42: Collieston
 - 43: Garcrogro
 - 44: Benbrack Variation
 - 45: Glenmuckloch
 - 47: Knocknalling
 - 48: Lethans
 - 49: South Kyle 2
 - 50: Lethans Extension
 - 51: Lanehead
 - 52: Mochrum Fell
 - 53: Greenburn Wind Park
 - 54: Dalswinton
 - 55: Overhill
 - 56: Kennoxhead Extension II
 - 57: North Kyle Energy Project
 - 58: Harestanes West
 - 59: Drum
 - 60: Watchman Energy Park
 - 61: Kennoxhead
 - 62: Kennoxhead Extension





Site Boundary

- Turbine

Wind Farm Location (By Status)

- Operational
- Under Construction
- Consented
- Application Submitted
- Application Submitted (Previously Consented)
- Appeal/Public Inquiry
- Design/Scoping
- Design/Scoping (Previously Consented)
- Viewpoint
- 53.5° Field of View
- 90° Field of View

Zone of Theoretical Visibility (Tip Height 200 m)

- 1 - 3 Turbine Blade Tips Visible
- 4 - 6 Turbine Blade Tips Visible
- 7 - 9 Turbine Blade Tips Visible

Left hand map: 0 2.5 5 10 Km
Map scale 1:200,000 @ A3

Right hand map: 0 0.5 1 Km
Map scale 1:25,000 @ A3

Source: LUC, Pell Frischmann, OS

Produced By: HD
Checked By: NE
Version: 00

Date: 06/05/2025
Ref: 11634_VPs_DoublePage_A3L

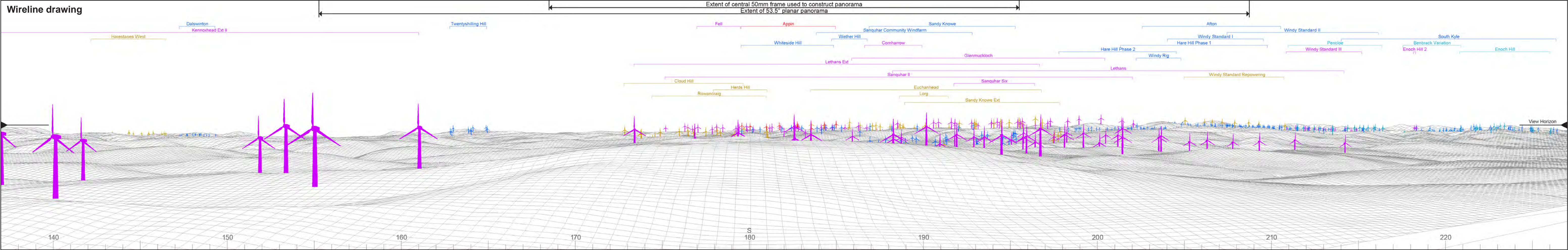
Figure 5.30
Viewpoint 20: Cairn Table

Appin Wind Farm
EIA Report



Baseline photograph

This image provides landscape and visual context only

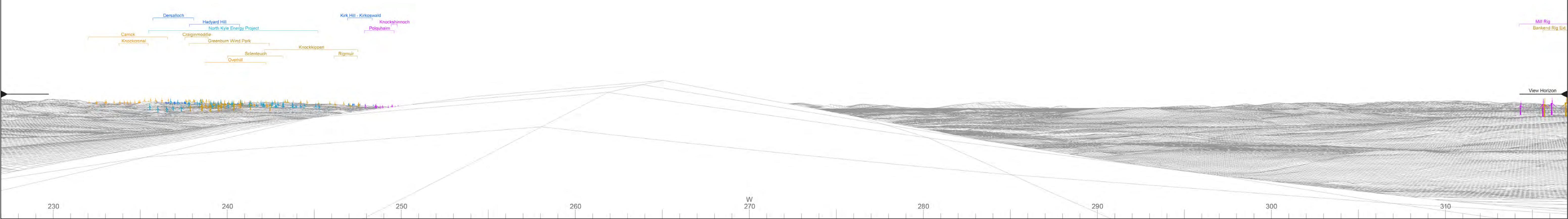




Baseline photograph

This image provides landscape and visual context only

Wireline drawing



OS reference: 272553E 624243N
AOD: 582 m
Direction of view: 272°
Nearest turbine: 25.45 km

Horizontal field of view: 90° (cylindrical projection)
Principal distance: 522 mm
Paper size: 841 x 297 mm (half A1)
Correct printed image size: 820 x 260 mm

Camera: Nikon D750
Lens: 50mm Fixed Focal Length
Camera height: 1.5 m

Photography Date: 04/08/2022
Photography Time: 19:11

Wind Farm Developments key
(by status):

Proposed scheme
Operational
Under construction
Consented

Application
Scoping
Appeal/PLI

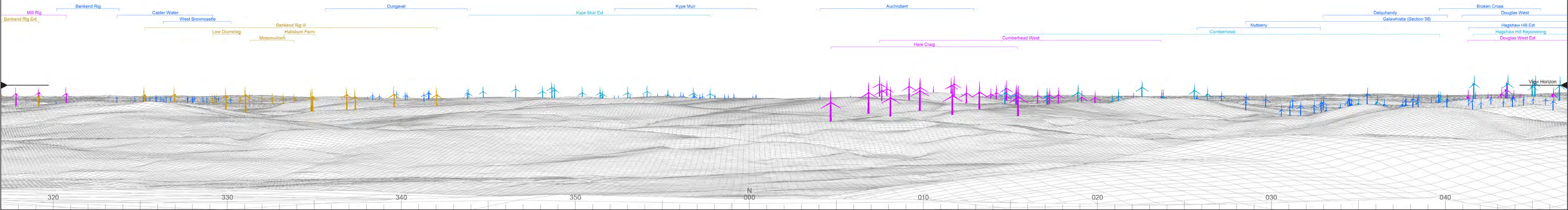
Appin Wind Farm
Figure: 5.30b
Viewpoint 20: Cairn Table



Baseline photograph

This image provides landscape and visual context only

Wireline drawing



OS reference:	272553E 624243N	Horizontal field of view:	90° (cylindrical projection)	Camera:	Nikon D750	Photography Date:	04/08/2022
AOD:	582 m	Principal distance:	522 mm	Lens:	50mm Fixed Focal Length	Photography Time:	19:11
Direction of view:	2°	Paper size:	841 x 297 mm (half A1)	Camera height:	1.5 m		
Nearest turbine:	25.45 km	Correct printed image size:	820 x 260 mm				

Wind Farm Developments key
(by status):

Proposed scheme	Application
Operational	Scoping
Under construction	Appeal/PLI
Consented	

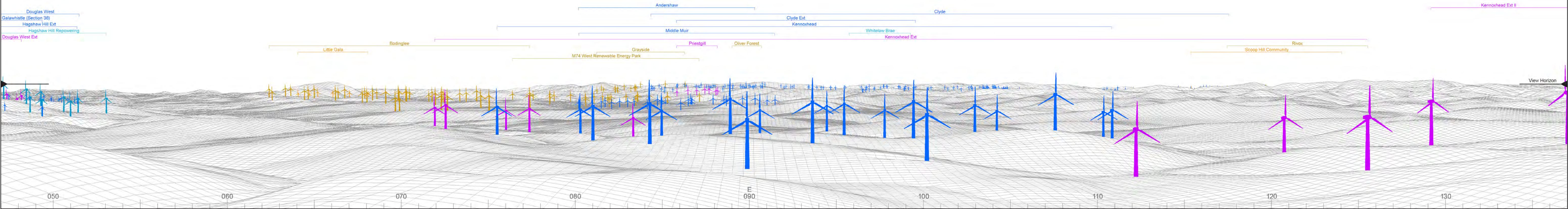
Appin Wind Farm
Figure 5.30c
Viewpoint 20: Cairn Table



Baseline photograph

This image provides landscape and visual context only

Wireline drawing



OS reference: 272553E 624243N
AOD: 582 m
Direction of view: 92°
Nearest turbine: 25.45 km

Horizontal field of view: 90° (cylindrical projection)
Principal distance: 522 mm
Paper size: 841 x 297 mm (half A1)
Correct printed image size: 820 x 260 mm

Camera: Nikon D750
Lens: 50mm Fixed Focal Length
Camera height: 1.5 m

Photography Date: 04/08/2022
Photography Time: 19:11

Wind Farm Developments key
(by status):

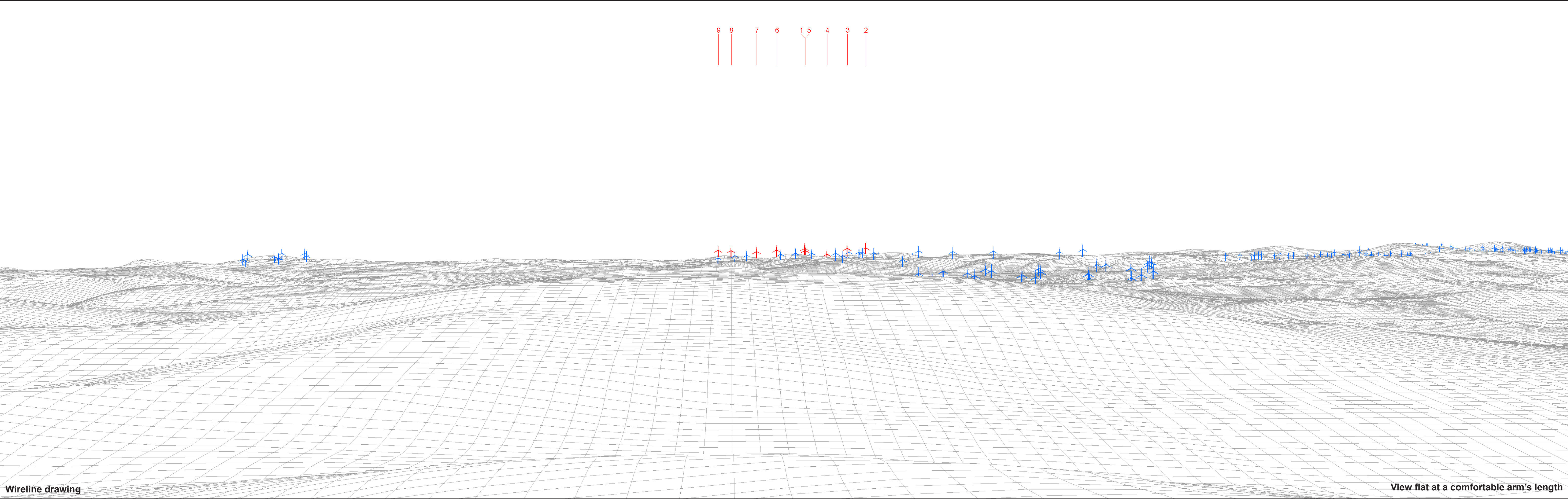
Proposed scheme
Operational
Under construction
Consented

Application
Scoping
Appeal/PLI

Notes:
1) Kennoxhead windfarm is now operational, but visible as under construction in the baseline photograph

Appin Wind Farm
Figure 5.30d
Viewpoint 20: Cairn Table

© Crown copyright and database rights 2021 Ordnance Survey data Licence number: 0100051673



Wireline drawing

View flat at a comfortable arm's length



OS reference:	272553E 624243N	Horizontal field of view:	53.5° (planar projection)
AOD:	582 m	Principal distance:	812.5 mm
Direction of view:	182°	Paper size:	841 x 297 mm (half A1)
Nearest turbine:	25.45 km	Correct printed image size:	820 x 260 mm

Wind Farm Developments key
(by status):

Proposed scheme
Operational
Under construction

Notes:
1) Aviation lighting will be positioned on the following turbine nacelles (hubs):
T1, T2, T5, T9

Appin Wind Farm
Figure: 5.30e
Viewpoint 20: Cairn Table



Photomontage

View flat at a comfortable arm's length



OS reference:	272553E 624243N	Horizontal field of view:	53.5° (planar projection)	Camera:	Nikon D750	Photography Date:	04/08/2022
AOD:	582 m	Principal distance:	812.5 mm	Lens:	50mm Fixed Focal Length	Photography Time:	19:11
Direction of view:	182°	Paper size:	841 x 297 mm (half A1)	Camera height:	1.5 m		
Nearest turbine:	25.45 km	Correct printed image size:	820 x 260 mm				

Appin Wind Farm
Figure: 5.30f
Viewpoint 20: Cairn Table