



# Artfield Forest Wind Farm

## Environmental Impact Assessment Report

Volume 3a: Figures

March 2021





## Volume 3a: Figures – Table of Contents

<b>Chapter 1:</b>	<b>Introduction</b>		
Figure 1.1	Site Location		
<b>Chapter 2:</b>	<b>Development Description</b>		
Figure 2.1	Site Layout		
Figure 2.2	Typical Wind Turbine Elevation		
Figure 2.3	Typical Turbine Foundation and Crane Hardstanding Dimensions		
Figure 2.4	Typical Access Track Detail		
Figures 2.5a-c	Typical Watercourse Crossing Detail		
Figure 2.6	Typical Substation and Control Building Layout		
Figure 2.7	Typical Energy Storage Facility Layout		
Figure 2.8	Typical Temporary Construction Compound Layout		
Figure 2.9	Typical Anemometer Mast		
Figure 2.10	Typical Cable Trench Section		
<b>Chapter 3:</b>	<b>Design Evolution and Alternatives</b>		
Figure 3.1	Gass Wind Farm (Consented Layout)		
Figure 3.2	Turbine Layout Evolution		
Figure 3.3	Design Constraints Heat Map		
Figure 3.4	Turbine Layout Evolution with Heat Map		
Figure 3.5	Layout 4 (Design Freeze) with Peat Depth		
<b>Chapter 4:</b>	<b>Energy and Planning Legislation and Policy</b>		
N/A			
<b>Chapter 5:</b>	<b>Seascape, Landscape and Visual Amenity</b>		
Figure 5.1	Topography	Figure 5.7b	Cumulative ZTV Proposed Development, Glenchamber and Carscreugh
Figure 5.2	Landuse	Figure 5.7c	Cumulative ZTV Proposed Development, Artfield Fell and Balmurrie Fell
Figure 5.3a-b	Landscape Character Type Compared to Local Council	Figure 5.7d	Cumulative ZTV Proposed Development, Wether Hill and Blackcraig Hill
Figure 5.4a	Landscape Designations	Figure 5.7e	Cumulative ZTV proposed Development, North Rhins and Knocknain Farm
Figure 5.4b	Landscape Designations with Blade Tip ZTV	Figure 5.7f	Cumulative ZTV proposed Development, Windy Standard and Windy Standard II
Figure 5.5a	Transportation Route, Recreational Routes, and Summits	Figure 5.7g	Cumulative ZTV Proposed Development, Hare Hill and Hare Hill Extension
Figure 5.5b	Route Analysis	Figure 5.7h	Cumulative ZTV Proposed Development, Afton and Sanquhar
Figure 5.6a	ZTV	Figure 5.7i	Cumulative ZTV Proposed Development, Barlockhart Moor and Barlockhart Moor Extension
Figure 5.6b	Blade Tip v Hub Height ZTV	Figure 5.7j	Cumulative ZTV Proposed Development, Assel Valley and Tralorg
Figure 5.7	Cumulative Context	Figure 5.7k	Cumulative ZTV Proposed Development, Mark Hill and Chirmorrie
Figure 5.7a	Cumulative ZTV Proposed Development, Hadyard Hill and Dersalloch	Figure 5.7l	Cumulative ZTV Proposed Development and Airies
		Figure 5.7m	Cumulative ZTV Proposed Development, Kilgallioch and Kilgallioch Extension
		Figure 5.7n	Cumulative ZTV Proposed Development, Arecleoch and Arecleoch Extension
		Figure 5.7o	Cumulative ZTV Proposed Development, Knockman Hill and Mochrum Fell
		Figure 5.7p	Cumulative ZTV Proposed Development, South Kyle and Benbrack
		Figure 5.7q	Cumulative ZTV Proposed Development, Torrs Hill and Lorg
		Figure 5.7r	Cumulative ZTV Proposed Development, Over Hill and Knockshinnoch
		Figure 5.7s	Cumulative ZTV Proposed Development, Windy Standard III and Windy Rig
		Figure 5.7t	Cumulative ZTV Proposed Development, Enoch Hill and Pencloe Consented Wind Farm
		Figure 5.7u	Cumulative ZTV Proposed Development, Glenshimmeroch and Margree
		Figure 5.7v	Cumulative ZTV Proposed Development, Troston Loch Wind Farm and Cornharrow
		Figure 5.7w	Cumulative ZTV Proposed Development, Meikle Float Farm and Larbrax
		Figure 5.7x	Cumulative ZTV Proposed Development, Stranoch 2 and Glen App
		Figure 5.7y	Cumulative ZTV Proposed Development, Airies II and Kilgallioch Extension
		Figure 5.7z	Cumulative ZTV Proposed Development, Downhill Farm and North Threave
		Figure 5.7za	Cumulative ZTV Proposed Development, Trostie and High Barcaple
		Figure 5.7zb	Cumulative ZTV Proposed Development, North Kyle and High Park
		Figure 5.7zc	Cumulative ZTV Proposed Development Sanquhar Six and Sanquhar II
		Figure 5.7zd	Cumulative ZTV Proposed Development and Kirk Hill Wind Farm
		Figure 5.7ze	Cumulative ZTV Proposed Development and Whiteside Hill
		Figure 5.7zf	Cumulative ZTV Proposed Development and Clauchrie Wind Farm
		Figure 5.7zg	Cumulative ZTV Proposed Development and Greenburn Wind Park
		Figure 5.7zh	Cumulative ZTV Proposed Development and Shepherds Rig
		Figure 5.7zi	Cumulative ZTV Proposed Development and Pencloe Wind Farm
		Figure 5.8	Lighting Intensity – Cardinal Lights
		<b>Chapter 6:</b>	<b>Archaeology and Cultural Heritage</b>
		Figure 6.1	The Site and Heritage Assets
		Figure 6.2	Heritage Assets within 1 km of the Site

Figure 6.3	Heritage Assets within 10 km of the Site
Figure 6.4a	Designated Assets, ASA and the Blade Tip ZTV
Figure 6.4b	Designated Assets, ASA and the Hub Height ZTV
Figure 6.5a	Designated Assets, Northern East Rhins and the Blade Tip ZTV
Figure 6.5b	Designated Assets, Northern East Rhins and the Hub Height ZTV
Figure 6.6a	Designated Assets, Southern East Rhins and the Blade Tip ZTV
Figure 6.6b	Designated Assets, Southern East Rhins and the Hub Height ZTV
Figure 6.7a	Designated Assets, Knock Fell and the Blade Tip ZTV
Figure 6.7b	Designated Assets, Knock Fell and the Hub Height ZTV
Figure 6.8	Cumulative Wind Farms and the Study Area
<i>Figure 6.9 – 6.18 is located within Volume 3b: Visualisations</i>	
Figure 6.19	Cultural Heritage Viewpoint Locations
Figure 6.20	Extract from a Map by Blaeu 1654
Figure 6.21	Extract from a Map by Roy, 1752-55
Figure 6.22	Extract from a Map by Ainslie, 1782
Figure 6.23	Extract from Ordnance Survey Map, 1948-50
Figure 6.24	Extract from Ordnance Survey Map, 1896
<b>Chapter 7:</b>	<b>Ecology</b>
Figure 7.1	Ecological Statutory Designated sites for Nature Conservation
Figure 7.2	Phase 1 Habitat Plan
Figure 7.3	National Vegetation Classification Plan
Figure 7.4	Protected and Notable Flora Records
Figure 7.5	Existing Terrestrial Mammal Records
Figure 7.6	Terrestrial Mammal Survey Results
Figure 7.7	Bat Activity Survey Plan
Figure 7.8	Bat Activity Survey Results
Figure 7.9	Electrofishing Records
Figure 7.10	Fish Habitat Sample Points and Results
<b>Chapter 8:</b>	<b>Ornithology</b>
Figure 8.1	Ornithological Designated Sites
Figure 8.2	Desk Study Records
Figure 8.3	Vantage Point Flight Activity Survey Plan
Figure 8.4	Breeding Bird Study Areas
Figure 8.5a	VP Flight Activity Survey Target Species Results (Raptors)
Figure 8.5b	VP Flight Activity Survey Target Species Results (Non-Raptors)
Figure 8.6	VP Flight Activity Survey Target Species Results (Inside Collision Risk Height)
Figure 8.7:	MBBS Results

**Chapter 9: Hydrology, Hydrogeology and Geology**

Figure 9.1	Surface Water Features
Figure 9.2	Bedrock Geology
Figure 9.3	Superficial Geology
Figure 9.4	Private Water Supplies
Figure 9.5	Soil Map of Scotland
Figure 9.6	GWDTE NVC Classification
Figure 9.7	Peat Depth Survey and Interpolated peat Depths

**Chapter 10: Traffic, Transport and Access**

Figure 10.1	Road Study Area
Figure 10.2	Abnormal Indivisible Load Route

**Chapter 11: Noise and Vibration**

Figure 11.1	Construction Noise Assessment Study Area
Figure 11.2	Noise Monitoring and Assessment Locations
Figure 11.3	Cumulative Wind Farm Locations

**Chapter 12: Aviation and Telecommunications**

N/A

**Chapter 13: Socioeconomics**

N/A

**Chapter 14: Forestry**

Figure 14.1	Forestry Study Area
Figure 14.2	Baseline Age Class
Figure 14.3	Baseline Felling Phases
Figure 14.4	Wind Farm Felling Plan
Figure 14.5	Wind Farm Permanent Woodland Loss
Figure 14.6	Woodland Restocking

**Chapter 15: Shadow Flicker**

Figure 15.1	Shadow Flicker Study Area and Receptors
-------------	-----------------------------------------

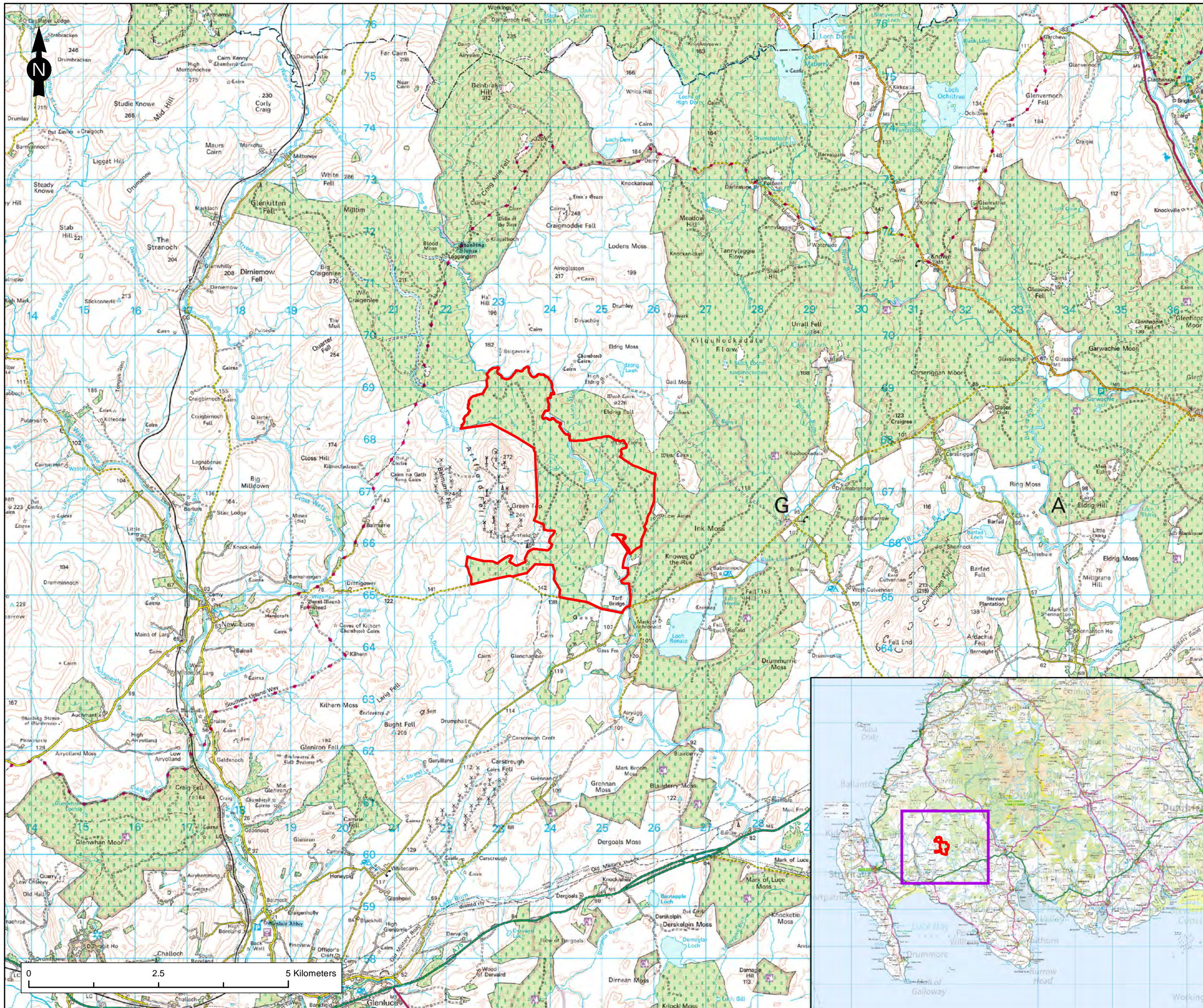
**Chapter 16: Climate**

N/A

**Chapter 17: Summary of Schedule of Mitigation**

N/A





**Legend**

Site Boundary

Figure Title	
Figure 1.1: Site Location	
Project Name	
Artfield Forest Wind Farm EIA Report	
Project Number	Figure No.
1620008937	1.1
Date	Prepared By
November 2020	AC
Scale	Issue
1:70,000 @ A3	1
Client	
Artfield Forest Wind Farm Ltd	