



Welcome

Our team are here to discuss our plans, listen to your views and outline the next steps of our proposal.

About Statkraft

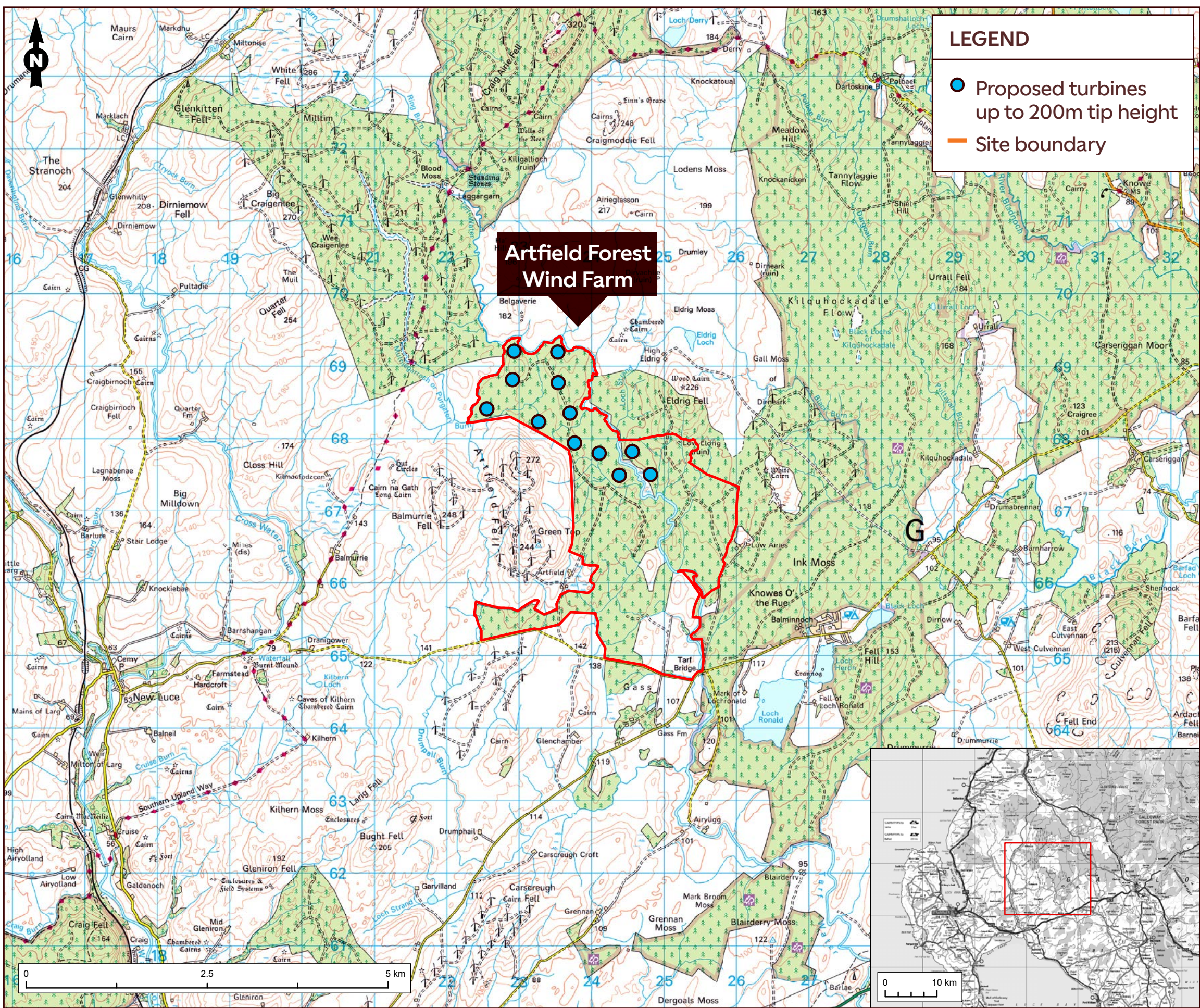
- **The largest generator of renewable energy in Europe**
- **A state owned utility, with origins in Norwegian hydropower over 130 years ago**
- **7,000 employees in over 20 countries, all working towards our low carbon future**
- **Operating in the UK since 2006**
- **Distributed over £4 million to UK communities near operating wind farms**





About Artfield Forest Wind Farm: The Story So Far

The project was consented by the Scottish Government in February 2023. We are now proposing slight changes to the project, aimed at making the best use of the site, using improved turbine technology.



Ordnance Survey © Crown Copyright 2024. All rights reserved. Licence number AC0000808122.

Artfield Forest Wind Farm

No. of Turbines	Up to 12
Max Blade Tip Heights	Up to 200m
Expected Installed Wind Capacity (MW)	Up to 86.4MW (Section 36C)
Estimated Generation (homes equivalent)	Over 80,000 Homes per year ①
Community Fund (per year)	Up to £430,000 per year ②
Operational Life	Up to 50 Years

① Based on 12 x 7.2MW turbines, local wind resource assessment and average Scottish domestic consumption of 3,078kWh pa (DESNZ Jan 2024).
② Based on 86MW x £5k per MW of installed capacity. If consented, value of fund determined by actual installed capacity.



Our Proposed Updated Design

The project is set to connect to the grid in 2030, giving us time to get the most out of the site using the best technology available and bringing more benefits to the local area.

What's staying the same?

- Number of turbines (12)
- Location of turbines
- Wind farm tracks
- Proposed transport route and access points to the site

What's changing?

- 20m tip height extension for all turbines to 200m
- Increase in the capacity of the wind farm by up c. 19MW to up to ~86 MW
- Operational life increasing from 30 years to 50 years
- We are removing the previously proposed Battery Energy Storage (BESS)
- We are removing the second substation location
- We are adding two temporary construction compounds to be used during the construction phase only

What benefits do these changes provide?

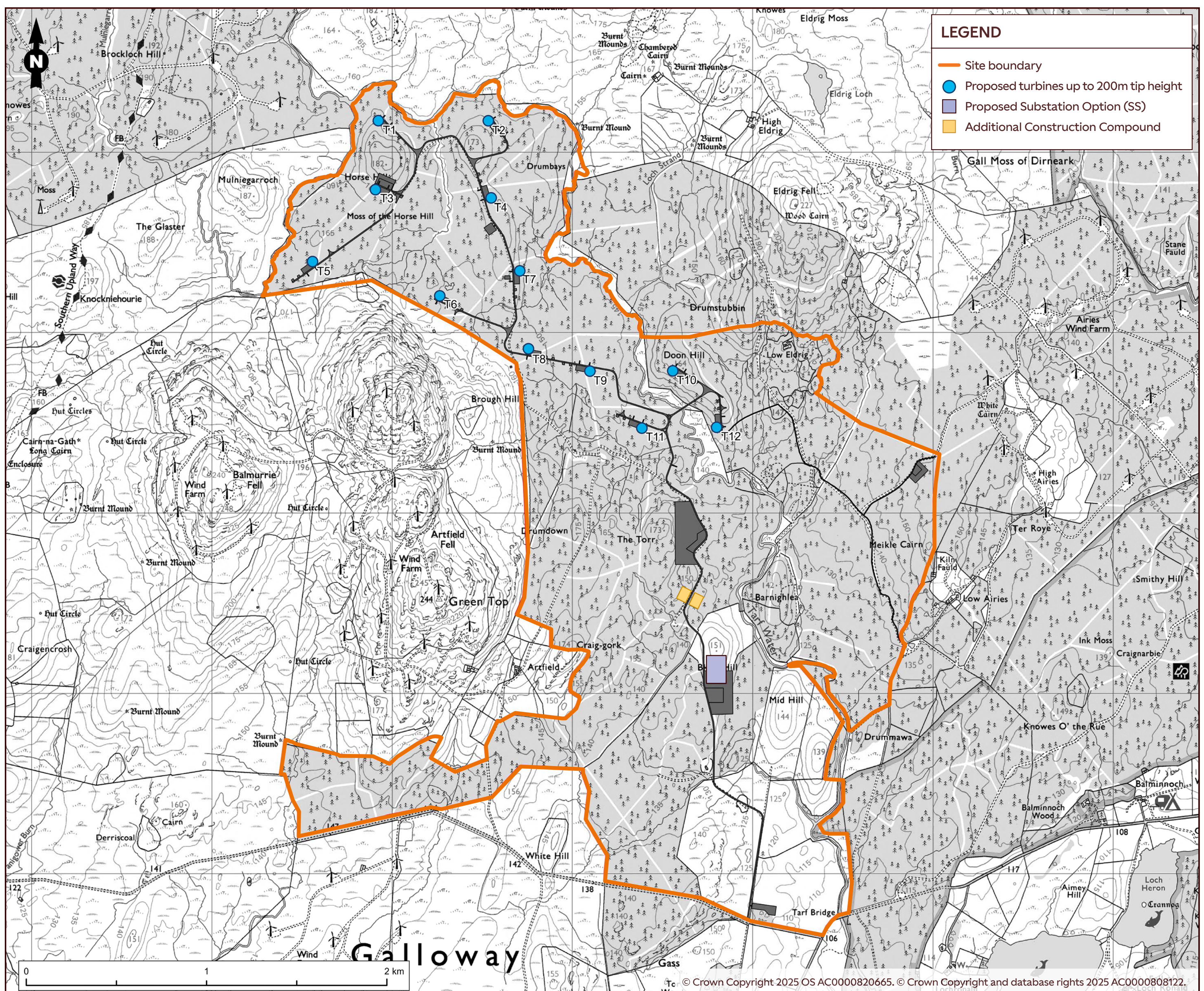
The proposed changes will result in:

- A greater generation of clean, green electricity, enough to **power over 80,000 homes per year**.
- A community benefit fund **increase by up to £95k per annum**, bringing the total to as much as **£430k annually**. Over the lifetime of the wind farm, the additional community benefit could **deliver local projects worth up to £21.5 million**.
- A new and separate dedicated Community Benefit Fund for fostering **career interest in Science, Technology, Engineering and Mathematics (STEM)**.
- An increase in the project's lifespan will enable us to continue producing **clean energy for longer**.



Site layout

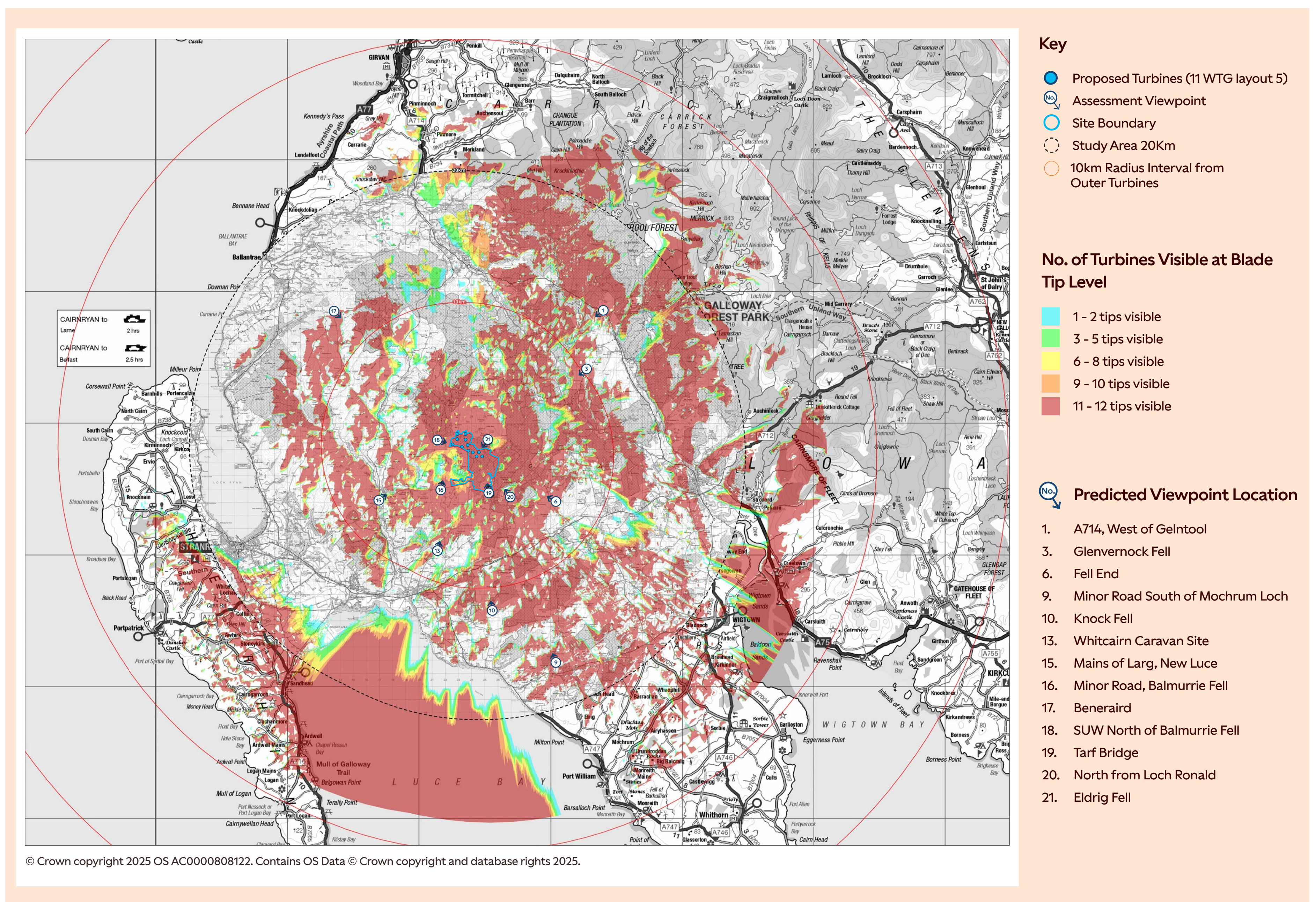
We are seeking to minimise changes to all infrastructure. We are removing the formerly consented battery area and using this for the project's substation. We are removing the second substation location and adding two temporary construction compounds.





What will Artfield Forest Wind Farm look like?

Our updated Zone of Theoretical Visibility and key visualisations will help demonstrate how the development will look in the landscape.



The ZTV illustrates the theoretical visibility of the Proposed Development, based on what is referred to as a “bare earth” model. It does not include the screening effect of ground cover features, such as woodland, vegetation and buildings, which can reduce the extent of actual visibility of wind turbines from some locations.

We have worked with NatureScot to finalise the viewpoint locations for assessment.

A selection of the finalised viewpoint locations and Illustrations of all agreed viewpoints are available for review.

Illustrations of all agreed viewpoints will be available as part of our application submission.



Construction, Transport and Access




The consented construction route will not change. Our continued focus is on minimising the impacts to the local road network, particularly during the 18 month construction period.

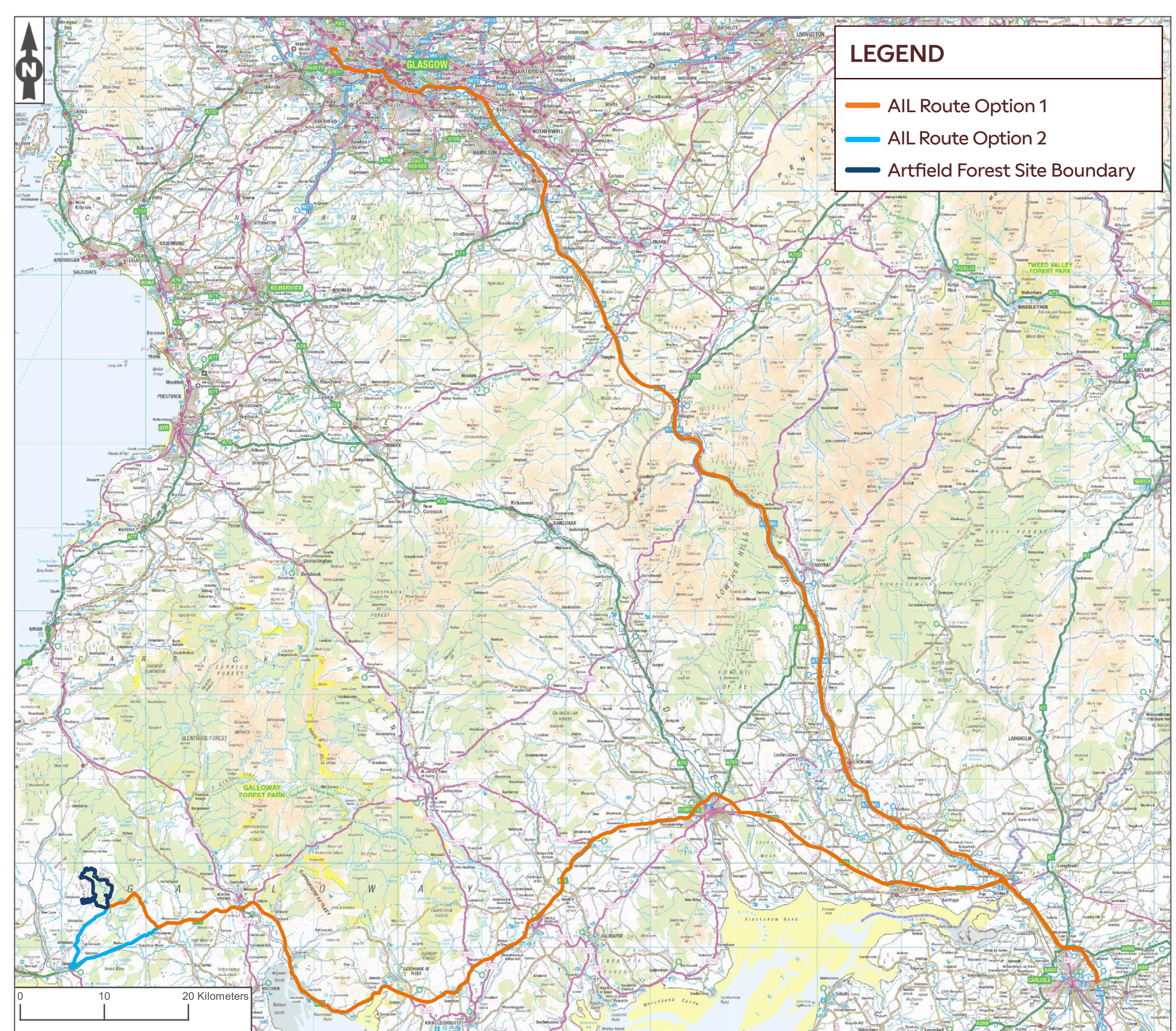
The Transport Assessment chapter of our S35C Environmental Impact Assessment (EIA) Report will include:

- an updated analysis of the traffic and transport associated with the revised wind farm development
- an updated plan to ensure safe and efficient access for the larger turbine deliveries to site
- all road works and traffic measures required for larger turbines

It is proposed that the transport route to the site would be along the **A75 from Gretna (M6) to Glenluce**.

We appreciate that the construction period can be disruptive for the local community. Measures available to reduce these impacts include:

-  Timing deliveries to avoid periods of peak traffic
-  Text messaging service to provide updates on abnormal loads/deliveries
-  Community Liaison Group during construction period.





Environmental Impact Assessment

A range of surveys inform the design of the wind farm.

Statkraft has appointed the same team of specialist environmental and technical consultants to undertake surveys and assessments, specific to the proposed changes.

An Environmental Impact Assessment (EIA) was prepared and submitted as part of the planning application for the consented scheme. The assessments and EIA produced for the consented development will be updated to assess the re-designed wind farm. Additional survey work is underway to inform the EIA on potential changes from the consented EIA.

A new package of mitigation and enhancement measures may be required as part of the new application in line with the Scottish Government's National Planning requirements.

The environmental topics to be updated or reassessed include:

- Landscape and Visual Impact Assessment
- Ornithology
- Transport
- Cultural Heritage
- Ecology
- Forestry
- Noise
- Aviation



Twentyshilling Hill Wind Farm, Dumfries and Galloway. 9 turbines, 140m tip height



Community Benefits

We like our wind farms to be considered a local asset. We look forward to hearing your suggestions on different ways the project can bring positive benefits to the local area.

Some examples of projects that have received funding through Community Benefit Funds



New business grants –
North Coast Watersports



New and upgraded playgrounds



Funding for School Uniform Banks



Maintaining and Upgrading
Recreational Paths

Community Benefit Fund

We are committed to setting up a Community Benefit Fund that delivers £5,000 per MW installed wind capacity per year in line with Scottish Government recommendations.

Improved Broadband

We require a reliable broadband service to operate our wind turbines and commissioned a study in 2020 to explore the potential for improving the local broadband infrastructure in hard-to-reach areas. The community may wish to explore this further with us.

STEM Funding

We are establishing a separate fund for primary schools in the local area, dedicated to fostering career interest in Science, Technology, Engineering and Mathematics (STEM). The project team will be happy to discuss this in more detail at the exhibitions.

Local Supply Chain

We want to engage with local businesses to increase awareness of opportunities during the construction and operation of our projects. Local businesses can register their interest here:



Local Suppliers register:

www.artfield-forest.co.uk/local-suppliers-register

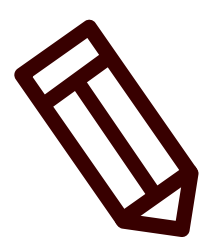


Thank you for visiting

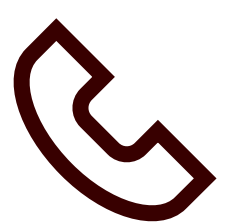
Your comments and feedback are important to us.

We welcome your comments and feedback. Please register your comments by completing a feedback form by **17 July 2025**.

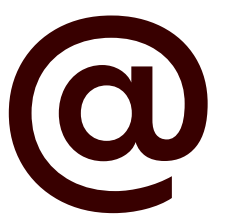
We plan to submit our application in Late 2025. We will advertise when this has happened. There will be an opportunity to submit a formal representation about your views on the project to the Scottish Government Energy Consents Unit.



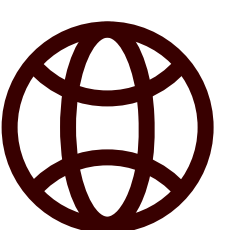
Please return the freepost reply card provided.



Phone the project hotline:
0800 772 0668



UKProjects@statkraft.com



www.artfield-forest.co.uk

Indicative Timeline

Throughout the process Statkraft will engage with the local community.

- **May 2020:**
Scoping Submitted
- **Autumn 2020:**
Virtual Public Exhibition
- **April 2021:**
Application Submitted
- **Feb 2023:**
Artfield Forest Wind Farm consented by the Scottish Government
- **June 2025:**
Public Exhibitions on updated plans
- **Late 2025:**
Updated Application Submitted
- **Autumn 2026:**
Updated Application Decided
- **Autumn 2027:**
Construction commences
- **Summer 2030:**
Operational for up to 50 years