

Artfield Forest Wind Farm Proposal: In Brief

12 turbines

Submitted March 2021
to Scottish Govt.
Energy Consents Unit

Reduced from 20 turbine scoping
layout submitted in May 2020.

£336,000

Community benefit
fund per year

Based on £5,000 x 67.2 MW of installed
capacity. Actual fund value determined
by installed capacity.

67.2 MW

Installed capacity,
up to 180 metre
to blade tip height

12 turbines x 180m to tip height.

Artfield Forest Wind Farm Proposal: In Brief

**Power for
60,000
homes**

Electricity equivalent
to the average
demand of over
60,000 homes*

Sharing

Opportunities
for shared
ownership

30 year

Operating
period

* Based on 12 x 5.6MW turbines, onsite wind speed measurements and average household consumption of 3,618kWhpa (BEIS 2019)

Artfield Forest: Community Engagement

Invited

Over 900 households and businesses to our online exhibition

Invitation to Virtual Exhibition:  Statkraft
24 August – 18 September 2020

Artfield Forest Wind Farm Proposal

We would like to tell you more about ourselves and our proposal for a sustainable energy project, including community investment and improved broadband potential in your area.



We are bringing forward proposals for Artfield Forest Wind Farm, located approximately 8km northeast of Glenluce. In line with Scottish Government advice in relation to Covid-19, we are holding a series of online consultation events, where you can find out more about the plans and help shape the project.

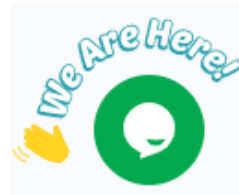
Invite delivered to homes and businesses within c.10km of the proposed development.

Engaged

Digital First approach*:
Online exhibition
Aug/Sept 20



Online presentation



3

Online chat sessions

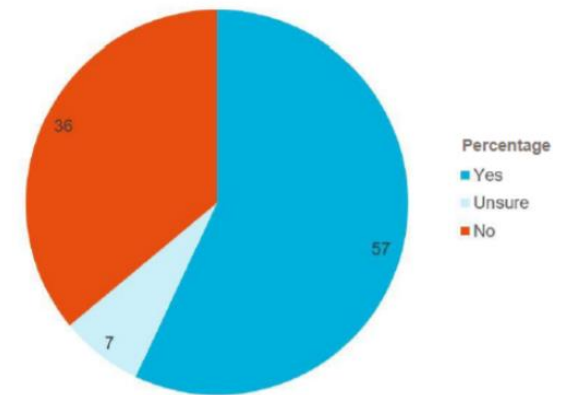
Online meetings with host and neighbouring Community Councils**

* Online resources and exhibition due to Covid-19 restrictions

** Meetings recorded and sent to community councils not possible to meet with.

Listened

Majority agree it's an acceptable location for a wind farm.²



¹ Website activity from 22 May (when website was first published to 31 December 2020.

² Based on 70 feedback form responses received during the online exhibition period.

Artfield Forest: Engagement Influence

Scheme Reduced

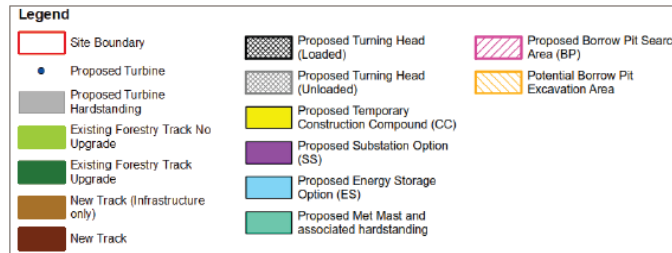
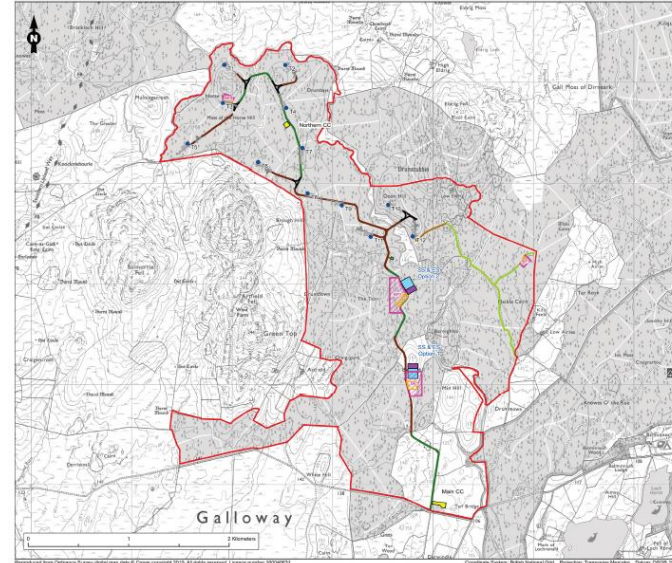


Turbine numbers reduced from 20 to 12 from scoping layout submitted in May 2020.



All turbines 180m to tip height .

Amended Layout



Feedback received on visual and cumulative impact and in response:

- Moved turbines to the north and west of the site to reduce visual impact
- Deliver a coherent scheme that fits with the emergent pattern of development in the area

Artfield Forest: Socio Economic Contribution



Estimated construction spend will be worth approximately:

Scotland
£27.6 million*

Dumfries and Galloway
£8.7 million*

Committed to engaging with local suppliers.

Local suppliers can register interest [here](#):



Artfield Forest: Socio Economic Contribution

A proven commitment to local suppliers



Windy Rig Wind Farm, Dumfries & Galloway.

“Windy Rig is another valuable contract for GTR. We are just one of several local businesses who are directly benefiting from the many wind farm developments within this area. This can only be a good thing for both local businesses and the local economy especially during the current pandemic.”

Tanya Russell, Director, GTR Contracts Ltd

Artfield Forest Wind Farm: Questions



Project Team (L-R):
John Wallace,
Project Manager
Ruth Semple,
Community Liaison Manager

If you have any questions about the proposal,
please get in [touch](#).