

# Borrow Pits on Land at Berry Burn Wind Farm

Pre-Application Consultation Report

---



---

## Appendix 7 Leaflets Provided at Both Public Events

---

# Berry Burn Extension Wind Farm

September/October 2024



Berry Burn Wind Farm, Forres in Moray. 29 turbines, 100m tip height

## Thank you for attending the public consultation for Berry Burn Extension Wind Farm.

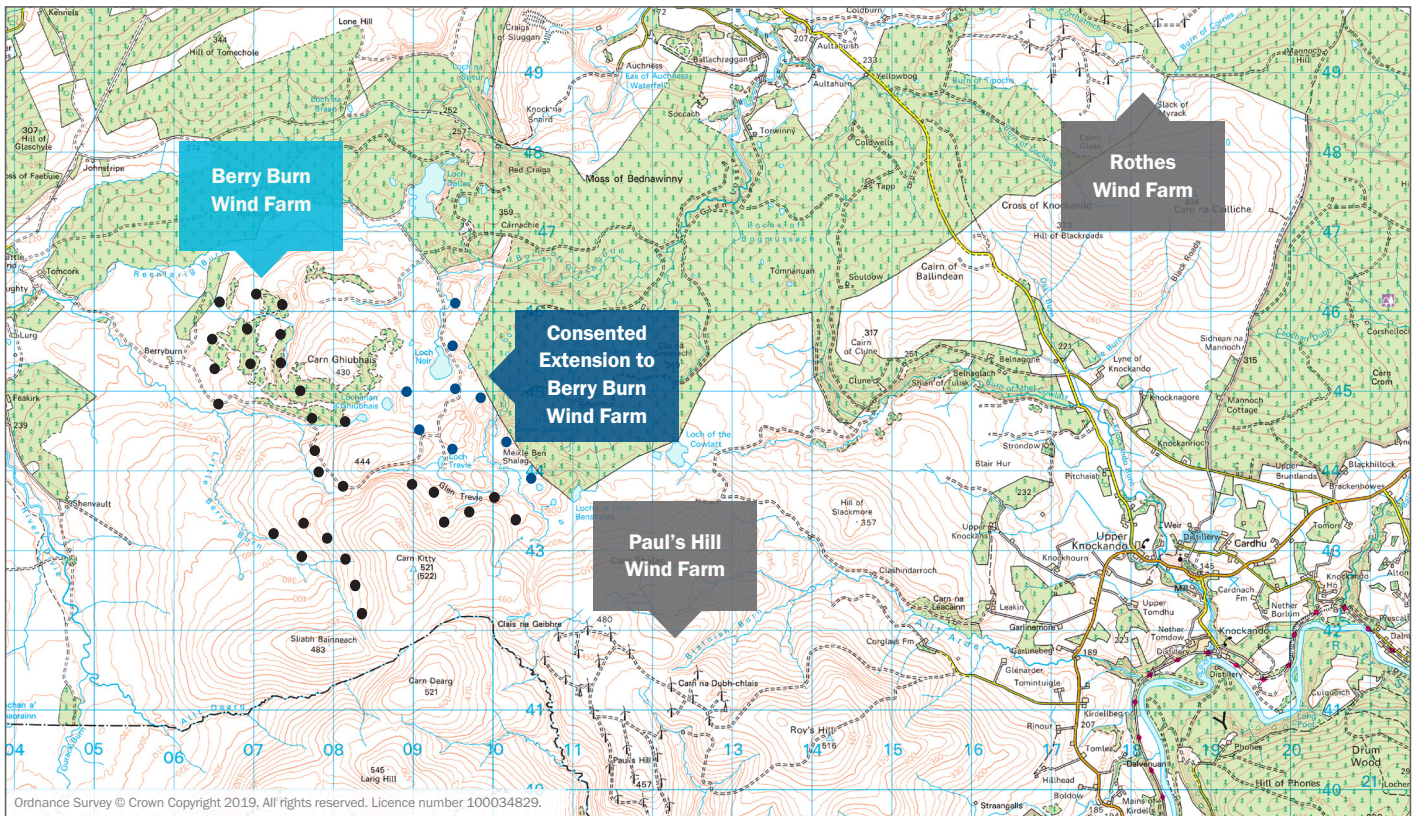
We are keen to update you on progress towards construction of the Berry Burn Extension Wind Farm, and our proposals for two borrow pits for construction materials.

Approved turbine layout as part of Section 36 consent.

## Background

The existing 29 turbine Berry Burn Wind Farm has been operating since 2014. A nine turbine extension was consented by Scottish Ministers in December 2021.

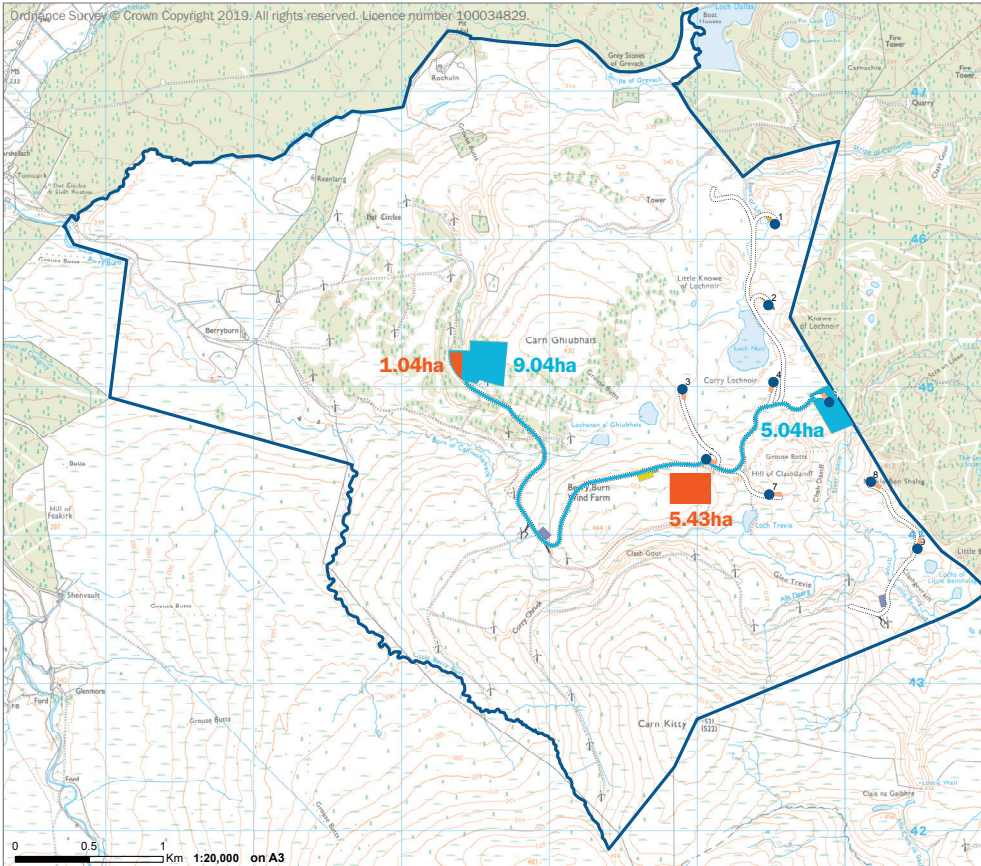
As part of our construction preparations, we are proposing to submit a planning application to enable the use of borrow pits during the construction period. We are not seeking planning permission for further turbines, beyond those nine that are consented.



	No. of Turbines	Turbine (MW)	Total (MW)	Max Blade Tip Heights	Electricity Generation (homes equivalent)	Community Fund (per year)	Community Fund (over project life)
<b>Berry Burn</b>	29	2.3	66.7	100m	over 47,000 homes	Minimum £166,750	Minimum £4.16 million
<b>Extension</b>	9	4.5	40.5	149.9m	over 43,000 homes	Minimum £202,500 (40.5MW x £5,000)	Minimum £6 million

Information based on 9 turbines and current knowledge of site wind speed. These figures may change subject to turbines installed. Calculated using annual average Scottish domestic consumption of 3078 kWh, DESNZ 2024.





LEGEND	
	SITE BOUNDARY
	ACCESS TRACK
	TURBINE LOCATIONS
	BORROW PIT SEARCH AREA AND ACCESS
	CONSENTED BORROW PIT SEARCH AREA
	CONSTRUCTION COMPOUND
	SATELLITE COMPOUND
	SUBSTATION COMPOUND
	HARDSTANDS



Scan the QR code to view the project webpage.

Plan showing Berry Burn Extension Wind Farm site layout and borrow pit locations.

## BORROW PITS

Borrow pits are small on-site quarries, with suitable material for the wind farm's construction. There are many benefits to utilising on-site borrow pits. A key benefit, for the local community and for the environment, is the reduction in construction traffic, with fewer heavy vehicles bringing construction materials to site.

The existing permission for the Wind Farm Extension already includes two borrow pit areas. Site investigations have shown that the original proposed borrow pit locations need to be moved to be optimal for the site. Our aim today is to provide information on what is proposed. Two events are taking place in September and October to consult with the local community.

## Contact us:

	Freephone: <b>0800 772 0668</b>
	Email: <b>UKProjects@statkraft.com</b>
	Website: <b>www.berryburn-extension.co.uk</b>

## PROJECT TIMELINE

- December 2021**  
→ Wind Farm Consent
- November 2023**  
→ Wind Farm and Borrow Pit Site Investigations
- September/October 2024**  
→ Public Exhibitions
- December 2024**  
→ Borrow Pit Planning Submission
- June 2025**  
→ Borrow Pit Planning Decision
- October 2025**  
→ Construction Commencement
- December 2026**  
→ Turbine Deliveries Commence
- October 2027**  
→ Wind Farm Operational

*Indicative timescale, subject to change*