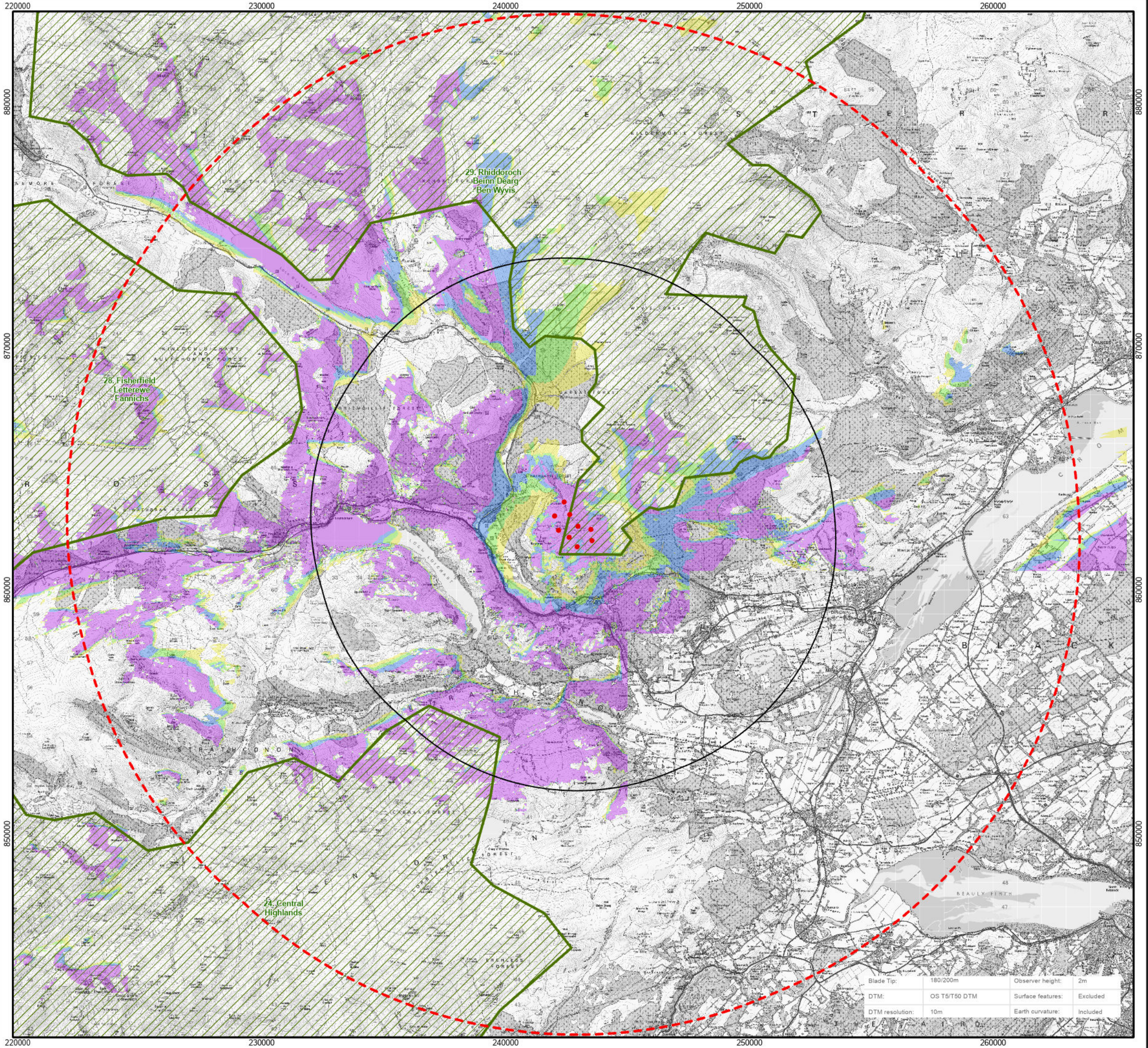




© Crown copyright and database rights (2024) Ordnance Survey ACO000808122. Contains public sector information licensed under the Open Government Licence v3.0. Contains NatureScot information licensed under the Open Government Licence v3.0.





• Proposed Turbine Location

10km Radius

20km Study Area

Wild Land Area

Blade Tip ZTV

Number of Blade Tips Theoretically Visible

1 - 2

3 - 4

5 - 6

7 - 9

1:150,000 on A3

0 5 10 Kilometres

Produced By: GG	Version: 3
Checked By: AW	Date: 02/04/2025

Figure 7.12b

Wild Land with Blade Tip ZTV

(20km Radius)

Carn Ferna Wind Farm

Environmental Impact Assessment Report

Blade Tip:	180/200m	Observer height:	2m
DTM:	OS T5/T50 DTM	Surface features:	Excluded
DTM resolution:	10m	Earth curvature:	Included