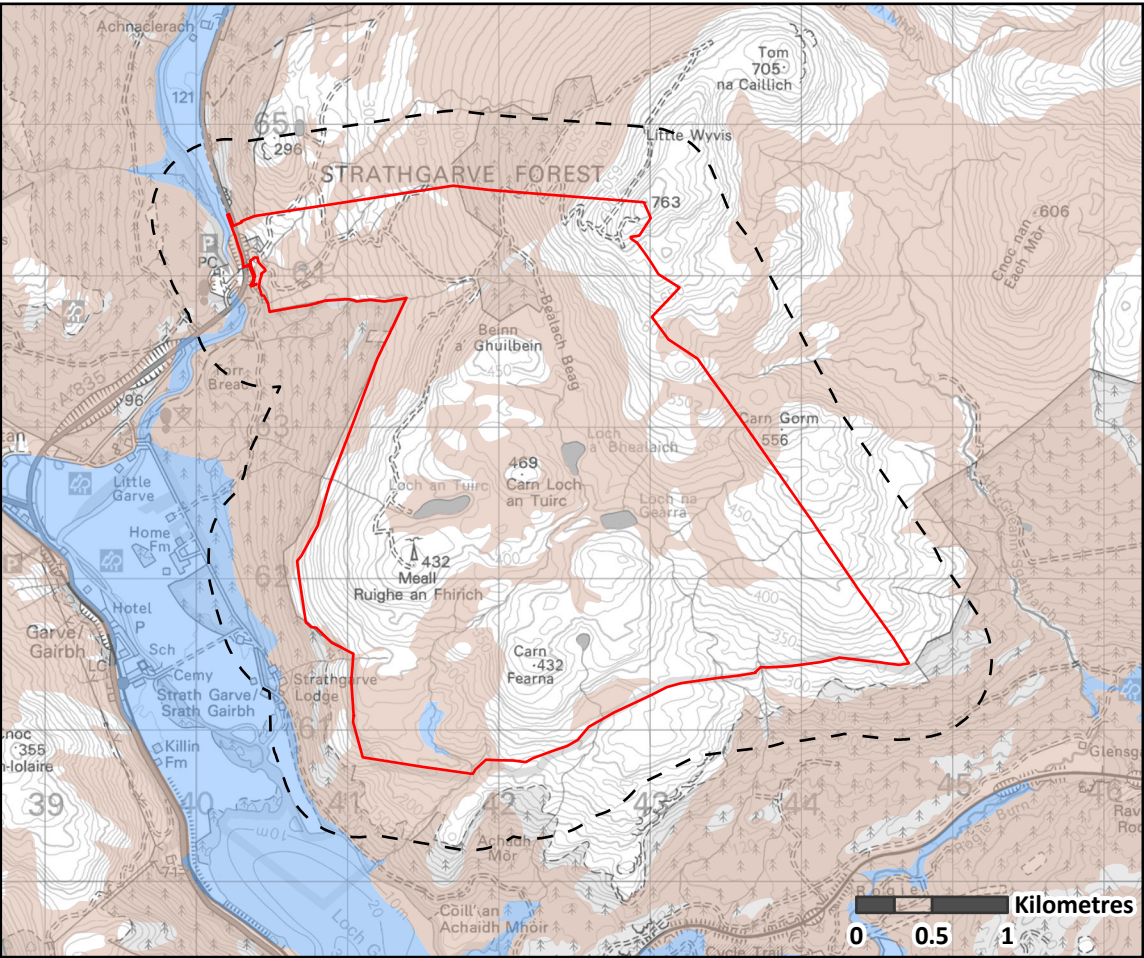


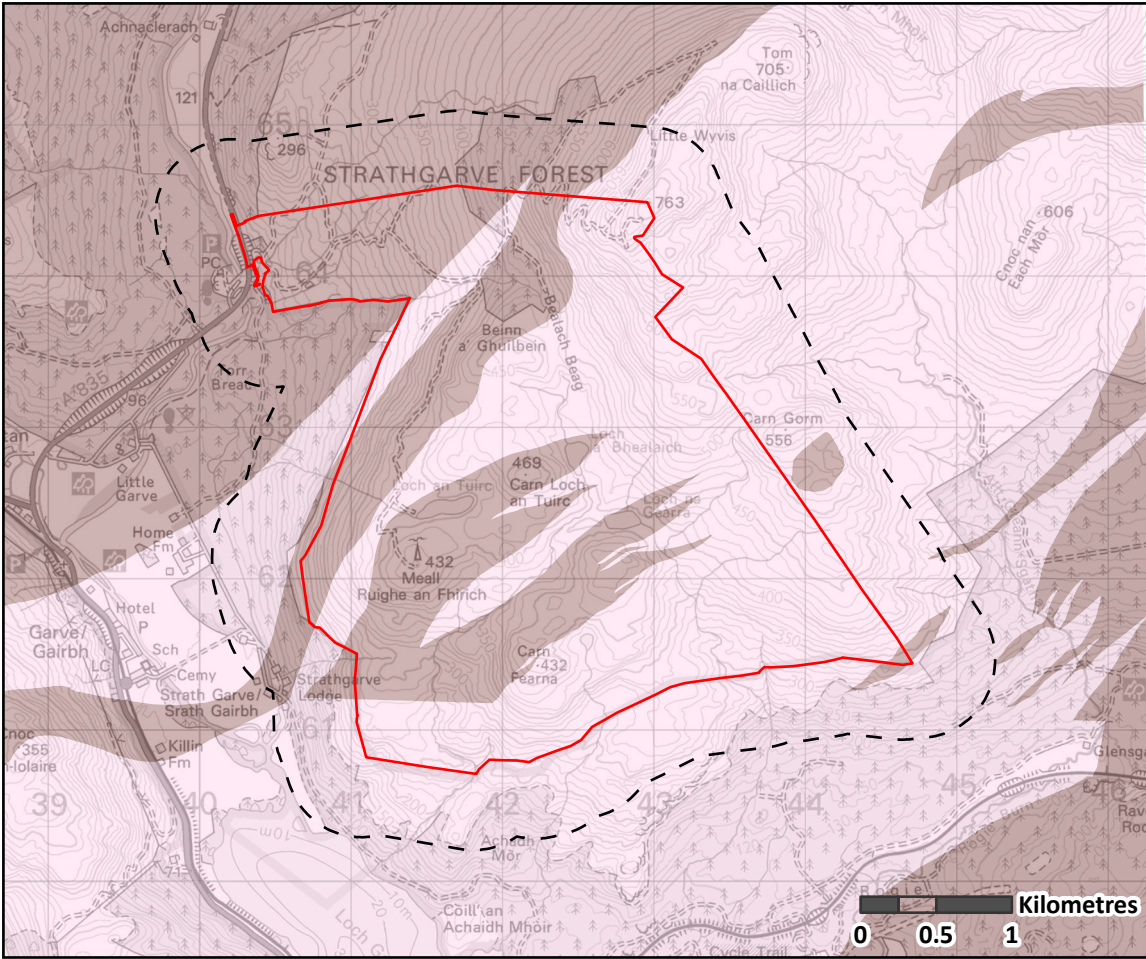
MAP EXTRACT

Scale - 1:300,000@ A3



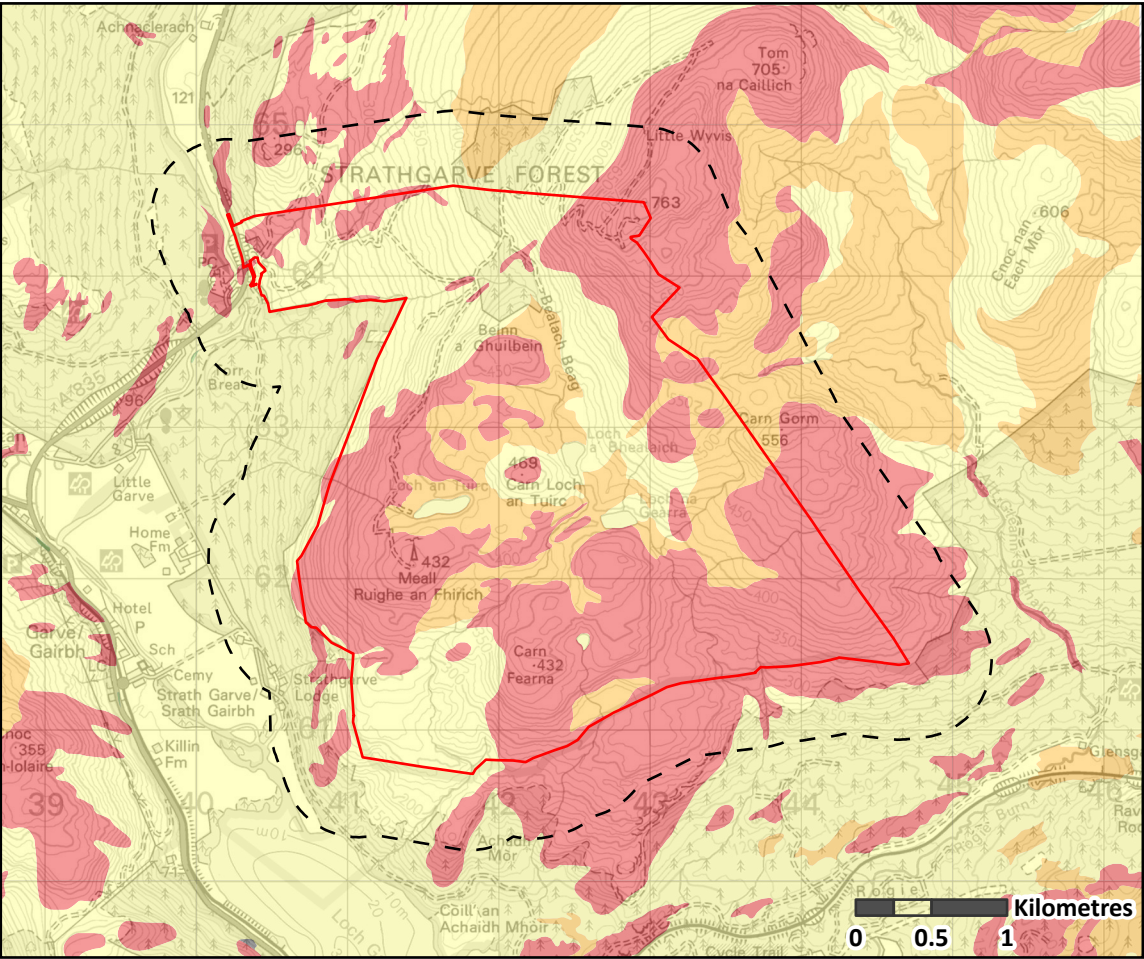
SUPERFICIAL AQUIFERS

Scale - 1:50,000@ A3



BEDROCK AQUIFERS

Scale - 1:50,000@ A3



GROUNDWATER VULNERABILITY

Scale - 1:50,000@ A3



- Site Boundary
- Site Boundary 500 m Buffer
- Superficial Deposits Aquifer Productivity Scotland, Version 2
 - Intergranular; Moderate to High Productivity
 - Not a significant aquifer
- Bedrock Aquifer Productivity Scotland, Version 2
 - Fracture; Low Productivity
 - Fracture; Very Low Productivity
- Groundwater Vulnerability
 - 5 - Vulnerable to Most Pollutants, with Rapid Impact in Many Scenarios.
 - 4a - Vulnerable to Those Pollutants not Readily Adsorbed or Transformed. Less Likely to Have Clay Present in Superficial Deposits (Therefore Generally Higher Vulnerability Than 4b).
 - 4b - Vulnerable to Those Pollutants not Readily Adsorbed or Transformed. More Likely to Have Clay Present in Superficial Deposits (Therefore Generally Lower Vulnerability Than 4a).

See Individual maps for scale

Produced By: RD Version: 2

Checked By: JRS Date: 28/03/2025

Figure 10.7b

Aquifer Classification and Groundwater Vulnerability - Wind farm site

Carn Fearna Wind Farm

Environmental Impact Assessment Report