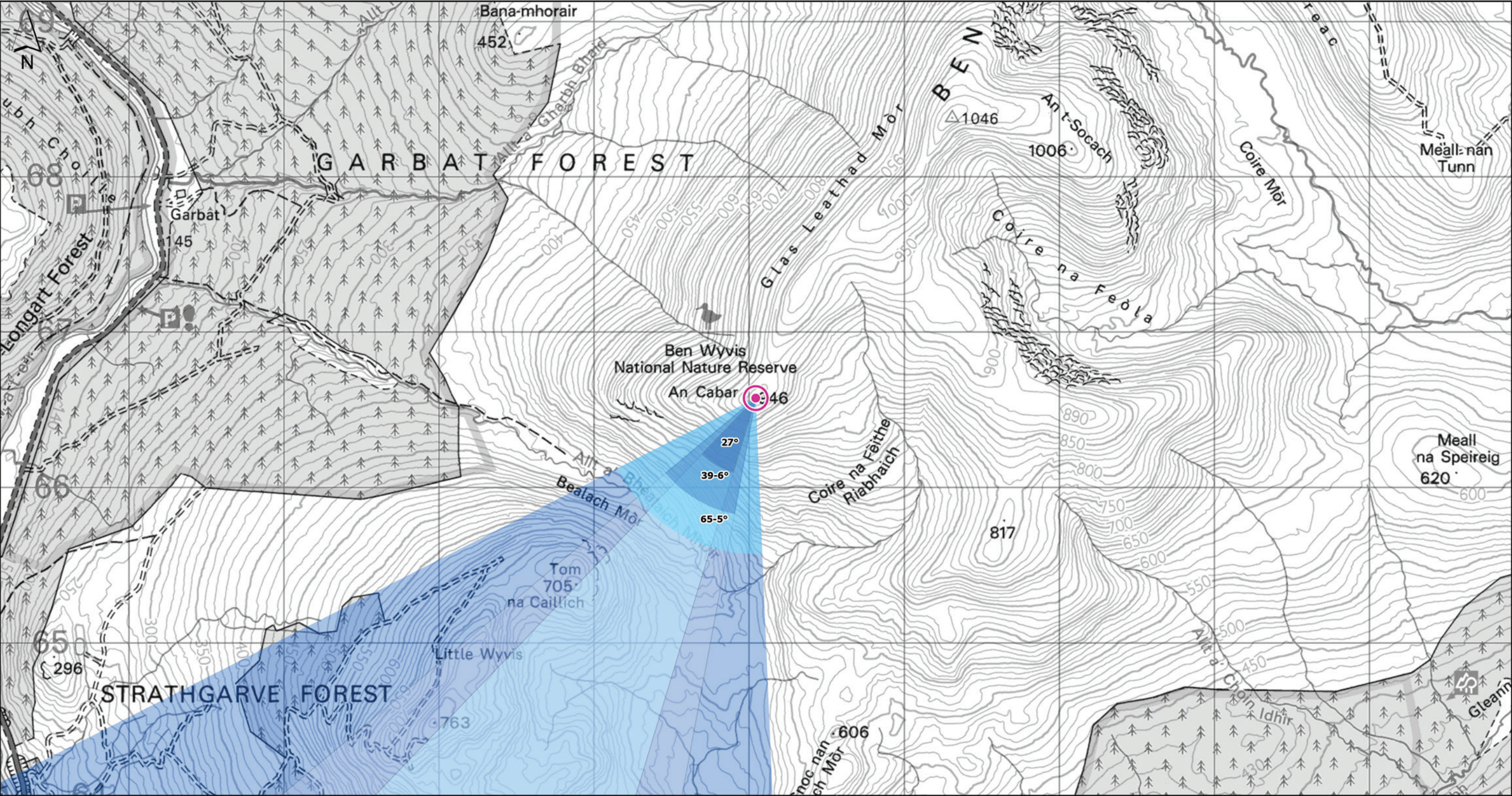


VIEWPOINT 5: An Cabar



Grid Ref:245044E 866573N

Distance to nearest turbine:3970m

AOD:946m

Viewpoint description: This viewpoint is located close to the high point of An Cabar and can be accessed on foot using the signed footpath up Ben Wyvis. The route can be found on <https://www.walkhighlands.co.uk>

THC Figure 7.53:  
Viewpoint 5: An Cabar

Carn Fearna Wind Farm



Extent of 50mm single frame image



© Crown copyright. All rights reserved (2024). Licence number AC0000808122

Photomontage

**Viewpoint 5: An Cabar** Distance to nearest turbine: 3.97km Camera: Canon EOS 5D Mark III Focal length: 50mm vertical (27°) x 28mm horizontal (65.5°) Camera height: 1.5m Date: 14.08.2024 Time: 12:46

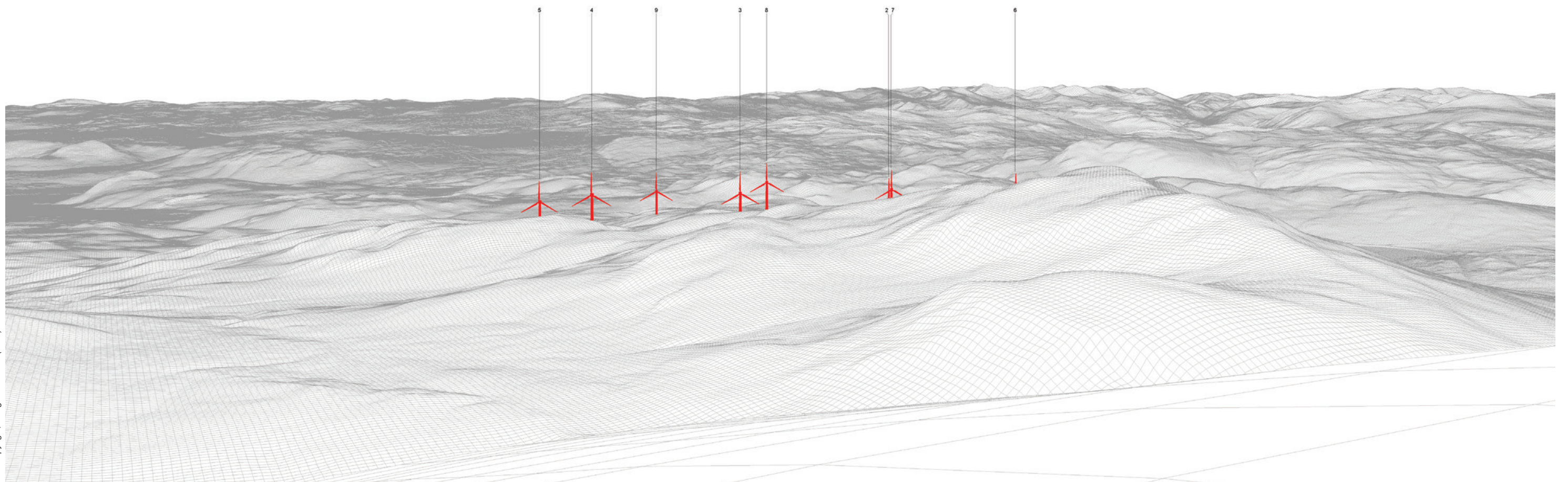
The images contained on this page and the following two pages are not representative of scale and distance from the actual Viewpoint and show the wind farm development in its wider landscape context only.





Viewpoint 5: Existing view

Viewpoint 5: Proposed Wireline

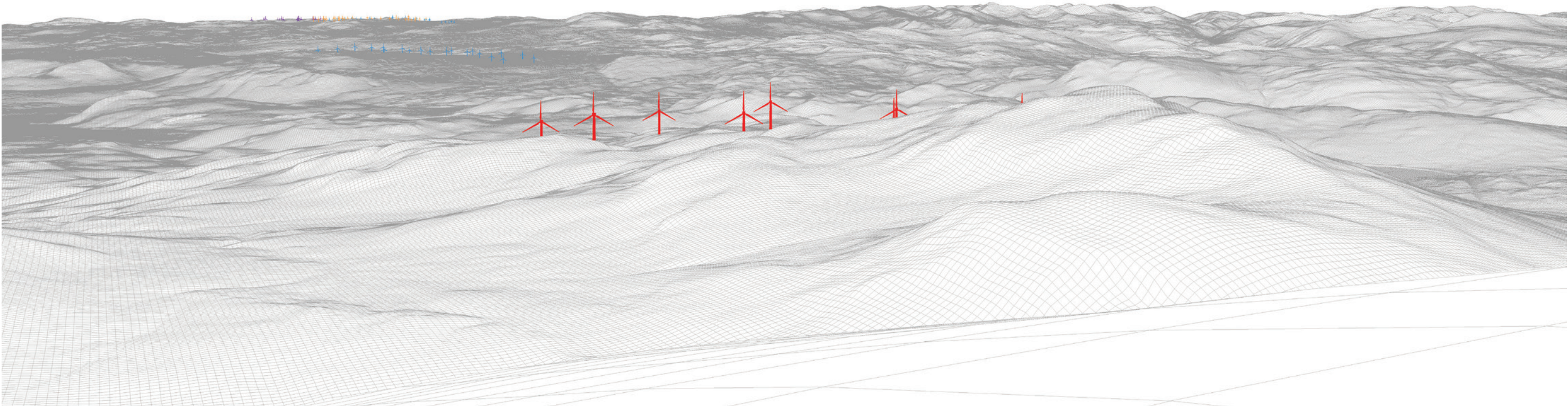






Viewpoint 5: Existing view

Viewpoint 5: Cumulative Wireline. Application turbines in red, operational / under construction in blue, consented in purple and application in orange.







**Viewpoint 5: An Cabar**

Distance to nearest turbine: 3.97km    Camera: Canon EOS 5D Mark III    Focal length: 50mm    Camera height: 1.5m    Date: 14.08.2024    Time: 12:46

When viewed at a comfortable arm's length (approx. 500mm), this printed image is representative of our detailed central vision, but is not representative of scale and distance.





**Viewpoint 5: An Cabar**

This image should be viewed at a comfortable arm's length (approx. 500mm).