

Coille Beith Wind Farm

September/October 2024



Berry Burn Wind Farm, Forres in Moray, 29 turbines, 100m tip height*

Project Overview

Coille Beith Wind Farm is a new wind farm proposal south of the River Okyel in Sutherland. We are proposing up to 19 turbines with a maximum height of up to 200 meters to blade tip.

We will refine the design based on feedback and on-going environmental studies. Our design will strike a good balance between maximising the electricity output of the site while carefully relating to its existing use. We will work with the local landscape to reduce the visual impact on the surrounding area.

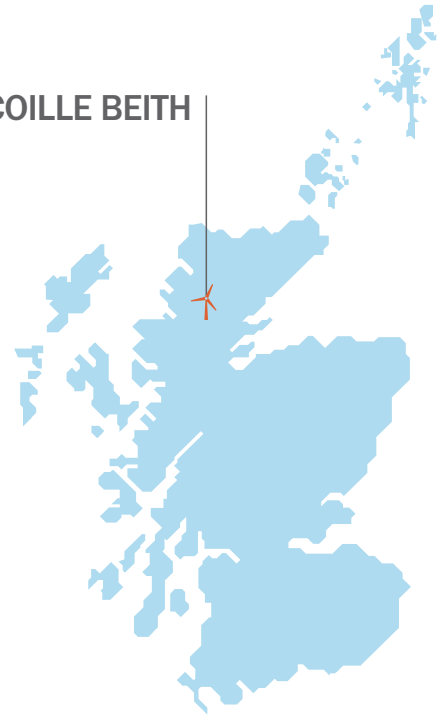
Environmental Impact Assessment

The process of gathering robust environmental baseline data on a site is vital to designing a wind farm. Surveys and assessments are undertaken by a team of specialist environmental and technical consultants. The results and findings will be detailed in an Environmental Impact Assessment (EIA) Report, which will be publicly available following submission of an application.

About Statkraft

Statkraft is Europe's largest generator of renewable energy, with origins going back over 125 years in Norwegian hydropower. Our Scottish headquarters are in Glasgow and we have more than 6,000 employees in over 21 countries. Across the Highlands, we have seven wind farms and one pumped hydro storage facility in operation or development.

COILLE BEITH



COILLE BEITH WIND FARM

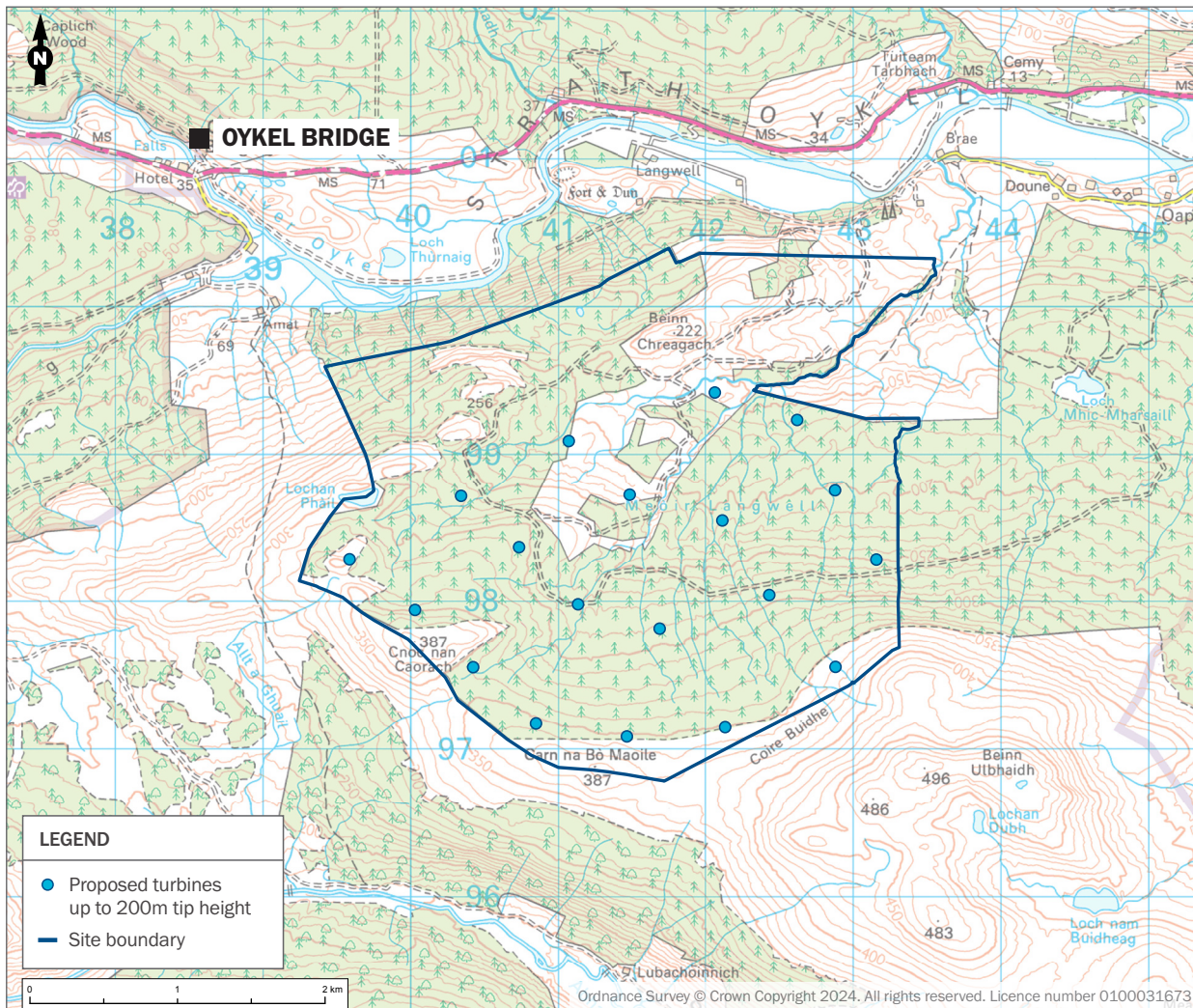
No. of Turbines	Up to 19
Max Blade Tip Heights	Up to 200m
Expected Installed Wind Capacity (MW)	Up to 136.8MW (Section 36 consent application)
Estimated Generation (homes equivalent)	140,000 Homes per year (1)
Community Fund (per year)	Up to £684,000 per year (2)
Operational Life	Up to 50 Years

(1) Based on 19 x 7.2MW turbines, local wind resource assessment and average Scottish domestic consumption of 3,078kWh pa (DESNZ Jan 2024).
(2) Based on 136.8MW x £5k per MW of installed capacity. If consented, value of fund determined by actual installed capacity.

Project website: www.coille-beith.co.uk

Coille Beith Wind Farm

Indicative Layout



Plan showing Coille Beith Wind Farm scoping layout.

PROJECT TIMELINE

- **July 2024**
→ Submit scoping
- **September 2024**
→ Public consultation to discuss initial layout
- **Spring 2025**
→ Public consultation to share revised layout and gather further feedback
- **Summer 2025**
→ Submit Section 36 Planning Application to Scottish Government
- **Summer 2026**
→ Expected planning decision

Indicative timescale, subject to change

Community Opportunity

Based on a 19 turbine scheme, the project would deliver a community benefit fund of £684,000 per year for the lifetime of the development. We will also be offering the opportunity for shared ownership uptake as well as a feasibility study for the area to enhance broadband connectivity for the area.

Contact us:



Freephone: **0800 772 0668**



Email: UKProjects@statkraft.com



Website: www.coille-beith.co.uk