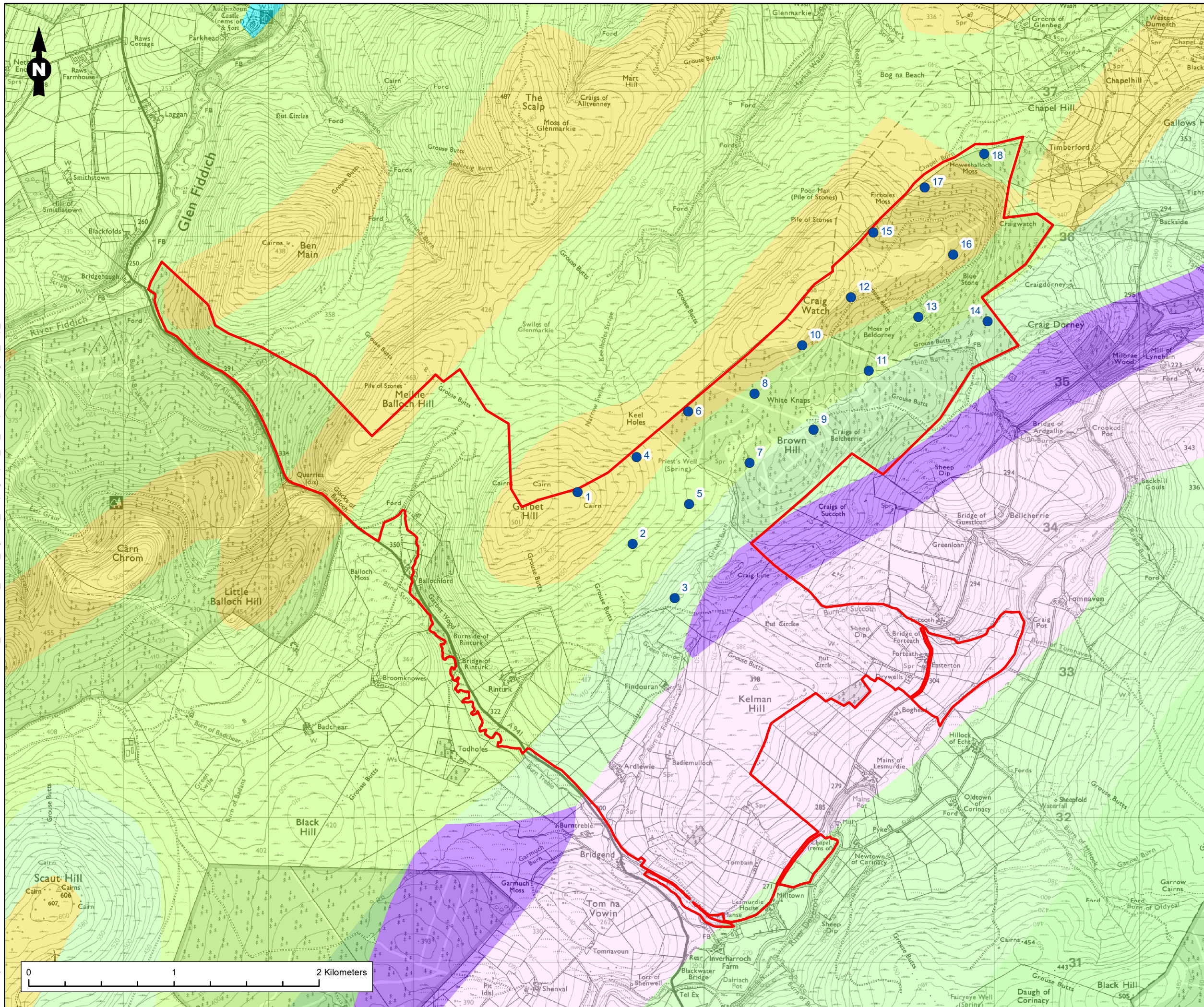


C:\Users\jetur\OneDrive - Ramboll\Documents\ArcGIS\TEMP WORKING LOCATION\CRAIG_WATCH\162_10178_Fig3.11b_ScopingReport_A3_Template_Geological_Map_Bedrock.mxd



Legend

- Site Boundary
- Preliminary Turbine Location (Scoping Stage) (200m tip height)
- UNNAMED IGNEOUS INTRUSION, ORDOVICIAN TO SILURIAN - MAFIC IGNEOUS-ROCK
- UNNAMED IGNEOUS INTRUSION, ORDOVICIAN TO SILURIAN - ULTRAMAFITITE
- APPIN GROUP - METALIMESTONE
- APPIN GROUP - GRAPHITIC PELITE, CALCAREOUS PELITE, CALCISILICATE-ROCK AND PSAMMITE
- APPIN GROUP - QUARTZITE
- ARGYLL GROUP - PSAMMITE, SEMIPELITE AND PELITE
- ARGYLL GROUP - QUARTZITE
- SOUTHERN HIGHLAND GROUP - PSAMMITE AND PELITE
- UNNAMED EXTRUSIVE ROCKS, NEOPROTEROZOIC - MAFIC LAVA AND MAFIC TUFF

Figure Title
Figure 3.11B: Bedrock Geology

Project Name
Craig Watch Wind Farm Scoping Report

Project Number 1620010178	Figure No. 3.11B
------------------------------	---------------------

Date October 2020	Prepared By JT
----------------------	-------------------

Scale 1:25,000 @A3	Issue 1
-----------------------	------------

Client
Craig Watch Wind Farm Limited

