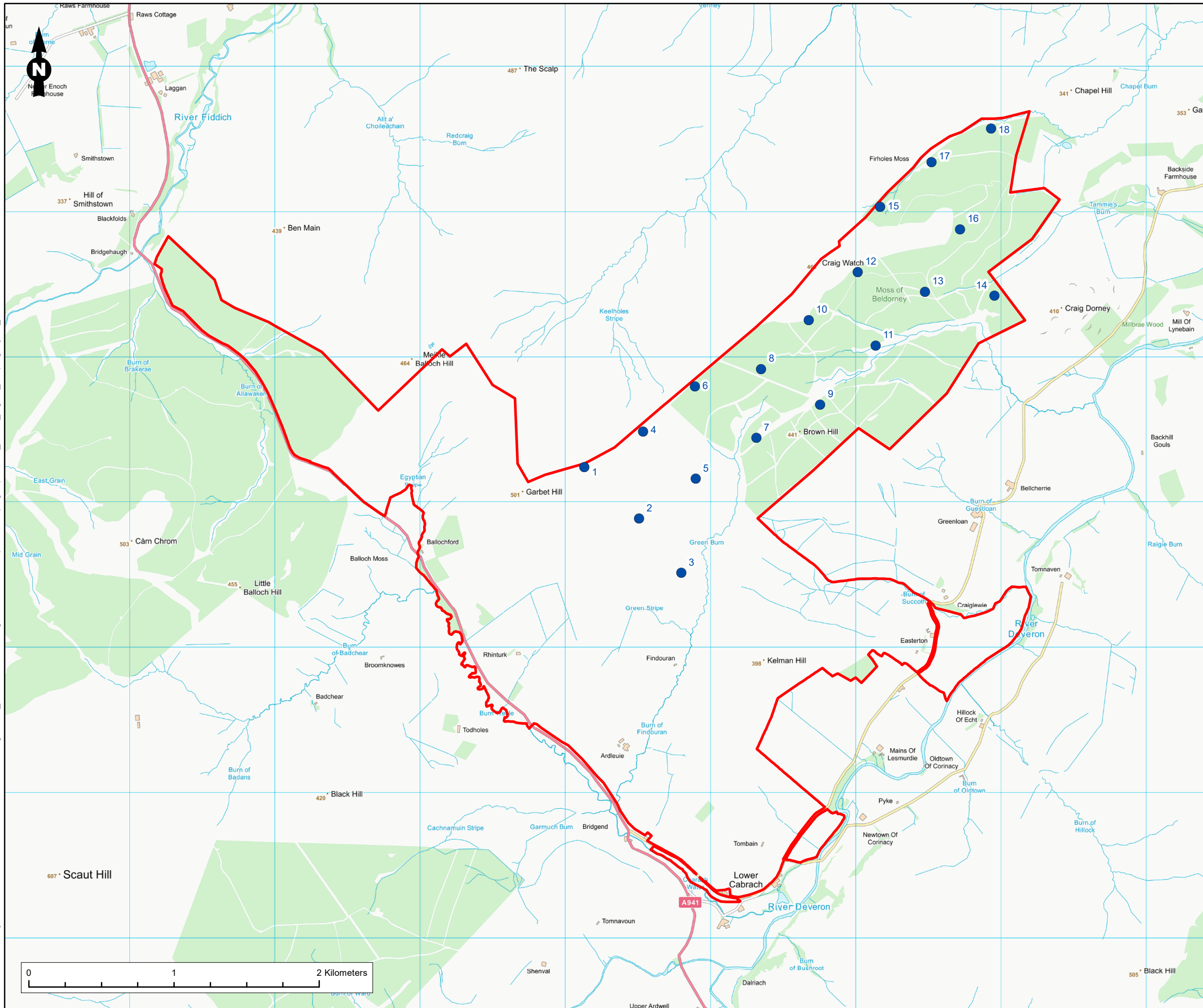


I:\ukediffiler\1\REHP\Projects\1620010178\Craig Watch\_Wind Farm Planning Services\GIS\MapFiles\ScopingReport\162\_10178\_Fig1.3\_ScopingLayout\_A.mxd



**Legend**

- Site Boundary
- Preliminary Turbine Location (Scoping Stage) (200m tip height)

---

Figure Title  
**Figure 1.3: Scoping Layout**

---

Project Name  
**Craig Watch Wind Farm Scoping Report**

---

Project Number <b>1620010178</b>	Figure No. <b>1.3</b>
Date <b>October 2020</b>	Prepared By <b>CF</b>
Scale <b>1:25,000 @A3</b>	Issue <b>1</b>

---

Client  
**Craig Watch Wind Farm Limited**

---

---

Reproduced from Ordnance Survey digital map data © Crown copyright 2020. All rights reserved. Licence number 100040631

Coordinate System: British National Grid. Projection: Transverse Mercator. Datum: OSGB 1936.