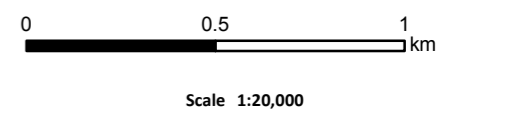


KEY

- Site Boundary
- Proposed Development
- Summit Pool Complexes

NVC Code:

Open Water	M17b/M3/M2/M1
D1.1	M17b/U5a
D1.1/M17b	M17b/U5b
D1.1/U6d	M2
D1.1/U6d/M17b	M23b/U6a/U6d
D1.1/U6d/U6a	M29
D1.1/U6d/U6a/U5a/M23b	M6
D1.1/U6d/U6c	M6/M1/M2/M3/M29
H12c	M6b/M29/M1
H12c/U5b/U6a/U6d	U4a
H12c/U6a/U6d	U4b
H12c/U6d	U5
M1	U5b
M17a/U6d	U5b/U5a
M17b	U6a
M17b/D1.1	U6a/U6d
M17b/E4/M3	U6a/U6d/H12c/D1.1
M17b/G1.4	U6d/D1.1
M17b/M2	U6d/H12c/D1.1
M17b/M2/G1.4	U6d/H12c/U6a
M17b/M2/M3/E4	U6d/M17c
M17b/M2/M3/E4/G1.3	U6d/M2
M17b/M2/M3/G1.4	U6d/U4a
M17b/M3	U6d/U6a/M23b
M17b/M3/E4/G1.4	U6d/U6a/M23b/U5a/U5b
M17b/M3/G1.3	U6d/U6a/M6c
M17b/M3/G1.4	U6d/U6a/U4a/D1.1
M17b/M3/M2	U6d/U6a/U5a/D1.1
M17b/M3/M2/E4	Other
M17b/M3/M2/G1.4	



Energy Isles Wind Farm
 Supplementary Environmental Information 2
Figure 7.1
NVC Habitats and Bog Pools