



Energy Isles Wind Farm

Supplementary Environmental Information

Consultation Report

August 2020



Contents

1	Introduction	1
2	SEI Consultation	1
3	Public Consultation	2
4	Community Liaison Group	4
5	Refinements to the Proposed Development	4
6	Conclusions	5
	Appendix 1 – Exhibition Advert & Poster	6
	Appendix 2 – Postal Response Card	7
	Appendix 3 – Exhibition Banners	8
	Appendix 4 – Response Cards	10
	Appendix 5 – Community Liaison Group Minutes	12

Abbreviations

CLG	Community Liaison Group
EIA	Environmental Impact Assessment
EIAR	Environmental Impact Assessment Report
HES	Historic Environment Scotland
m	Metre
MOD	Ministry of Defence
MW	Megawatt
NPF	National Planning Framework
SIC	Shetland Islands Council
PAN	Planning Advice Note
RSPB	Royal Society for the Protection of Birds
SEI	Supplementary Environmental Information
SEPA	Scottish Environmental Protection Agency
SNH	Scottish Natural Heritage
SW	Scottish Water

1 Introduction

1.1 This document is the Consultation Report for Energy Isles Wind Farm, which accompanies the Supplementary Environmental Information submitted in support of the application by Energy Isles Shetland Ltd (hereafter referred to as “the Applicant”) for the development of a wind farm (hereafter referred to as “the Proposed Development”) in Yell, Shetland.

Overview

1.2 The Applicant is submitting Supplementary Environmental Information (SEI) (hereafter referred to as “2020 SEI”) for the Proposed Development under The Electricity Act 1989. This is in support of the Environmental Impact Assessment Report submitted to Scottish Ministers in April 2019. The Proposed Development that is considered and described within the original Environmental Impact Assessment (EIA) Report (hereafter referred to as the ‘2019 EIA Report’) has changed following consideration of consultee objections and/or comments and was prepared in accordance with The Electricity Works (Environmental Impact Assessment) (Scotland) Regulations 2017.

1.3 The Applicant has undertaken a programme of consultation since the submission of the 2019 EIA Report. This Report gives details of this consultation and also details the findings of that work and illustrates the ways in which the consultation has helped identify potential issues arising from the emerging proposal and, where appropriate, shape the final design which is now the subject of the planning application.

1.4 This supports, and should be read in conjunction with, the Pre-Application Consultation (PAC) which was undertaken prior to submission of the 2019 EIA Report and is detailed within the 2019 PAC Report.

1.5 The Applicant is grateful to the statutory and non-statutory consultees, residents and local representatives for their input into the community engagement process and for their assistance in facilitating the meetings and consultation event.

2 SEI Consultation

Introduction

2.1 The Applicant has undertaken consultation with statutory and non-statutory consultees (summarised in Table 1 below) following the submission of the 2019 EIA Report through direct correspondence and the Energy Consents Unit (ECU) Gatecheck Process. Full details of these, the responses received, and the Applicants actions are provided in the 2020 SEI.

Table 1 – EIA Report and SEI Consultation

Consultee	Technical Topic
Highlands & Islands Airport	Aviation
Historic Environment Scotland (HES)	Cultural Heritage
Ironside Farrar	Geology & Hydrology
Marine Scotland	Ecology
Ministry of Defence (MOD)	Aviation
NATS Safeguarding	Aviation

Consultee	Technical Topic
RSPB	Ornithology
Scatsta Airport	Aviation
Scottish Environment Protection Agency (SEPA)	Geology & Hydrology
Scottish Forestry	Ecology
Scottish Natural Heritage	LVIA, Ornithology, Geology & Hydrology
Scottish Water (SW)	Geology & Hydrology
Scot Ways	Socio-eco, Tourism & Recreation
Shetland Amenity Trust	Cultural Heritage, Ecology, LVIA, and Ornithology
Shetland Bird Club	Ornithology, Ecology
Shetland Islands Council	General, Traffic, Socio-eco, Tourism & Recreation, Geology & Hydrology
Visit Scotland	Socio-eco, Tourism & Recreation
Yell Community Council	General

3 Public Consultation

Introduction

- 3.1 The Applicant has engaged with local communities and the general public through a Public Exhibition event which occurred on the 4th of February 2020 and through postal response cards which were distributed to residents of all three North Isles (Yell, Unst and Fetlar) for feedback.
- 3.2 This consultation allowed local residents to provide their opinions on the principle and new design of the Proposed Development, while also raising concerns. Full details of the consultation undertaken are provided below.

Public Exhibition

Date and Location

- 3.3 A Public Exhibition took place at Cullivoe Hall on Tuesday the 4th of February 2020 between 12:00 and 19:00 hours.

Notification

- 3.4 The Public Exhibition was advertised in the Shetland Times on 17th January 2020 and posters were distributed to local halls and shops in Yell, Unst and Fetlar. A copy of the advert and poster are provided in **Appendix 1**.
- 3.5 Postal response cards, including details of the public exhibition and a response questionnaire, were sent by Royal Mail to 900 household across the North Isles, (Yell, Unst, Fetlar) (refer to **Appendix 2**).

Public Exhibition Materials

3.6 The purpose of the Public Exhibition was to update the communities of Yell, Unst and Fetlar on the progress made since the 2019 EIA application submission, the changes to the design of the Proposed Development, and to allow them a chance to provide feedback to the project team. The information was presented visually by means of a series of large banners, on which the following information was presented:

- ▶ A summary of the evolution of the Proposed Development;
- ▶ The design changes since the 2019 layout;
- ▶ Details of the socio-economic benefits; and
- ▶ Next steps in the planning process.

3.7 A copy of the exhibition boards which were displayed is shown in **Appendix 3**.

Public Exhibition Attendance and Consultation Feedback

3.8 A total of 25 people submitted responses at the Public Exhibition in Cullivoe and a further 51 responses were received on postal cards. The responses received are summarised in Table 2 below and a summary of the topics raised are provided within **Appendix 4**.

Table 2 - Summary of Responses to Public Exhibition

Response	Exhibition	Postal Reply Cards	Total
Strongly Supportive	12	21	33
Supportive	4	10	14
Neither	1	2	3
Opposed	2	7	9
Strongly Opposed	6	11	17
Total	25	51	76

Project Website

3.9 The onset of the Covid-19 has brought about many changes in day-to-day life and business working. Not least, it has significantly changed the face of community engagement.

3.10 The Applicant has constantly monitored guidance from Scottish Government, and adapted how it engages with all stakeholders accordingly. It has been, and is, essential that the community and stakeholders are kept informed throughout this period.

3.11 A dedicated project website was already in existence from the launch of the Proposed Development, but with an increased focus on digital engagement, a new website with additional features was launched to provide a quality alternative to face-to-face communications. The new features enable the visitor to watch videos from the project team, take part in online surveys, request a call back and subscribe to news updates.

3.12 Media

3.13 A number of press articles/radio broadcasts have been published/made in the past year which have provided members of the public with information on the Proposed Development. These include, but are not limited to:

- ▶ <https://energywatch.eu/EnergyNews/Renewables/article11660394.ece>

- ▶ <https://www.shetnews.co.uk/2020/01/28/yell-wind-farm-developer-takes-six-turbines-out-of-plans/>
- ▶ <https://www.shetnews.co.uk/2019/10/10/yell-wind-farm-team-remain-upbeat-despite-recent-viking-setback/>
- ▶ <https://www.shetnews.co.uk/2019/10/11/shetland-has-again-all-eggs-in-one-basket/>
- ▶ https://www.mixcloud.com/BBCShetland/good-evening-shetland-thursday-10th-october-2019/?fbclid=IwAR1MRWG5s-5CHaHY2TFY7MTUwvdzBaWw5Fe7OpDqG321Kh2_uCgHz1AQEy0

4 Community Liaison Group

- 4.1 The Applicant has undertaken ongoing consultation with local community councils through meetings with a Community Liaison Group (CLG) with the most recent meetings held on 27th November 2019 and 3rd February 2020 in Cullivoe. The CLG includes representatives from Yell, Fetlar and Unst Community Councils.
- 4.2 These meetings have provided an opportunity for the local community to discuss the Proposed Development with the Applicant and raise any concerns while being kept informed of progress. Minutes of the meetings are provided in Appendix 5.

5 Refinements to the Proposed Development

- 5.1 A number of concerns and questions were raised by consultees and members of the public. Where possible The Applicant has sought to adjust or amend the proposals to take into consideration comments received.

Cultural Heritage

- 5.2 Historic Environment Scotland (HES) raised concerns regarding the visual impact of the 2019 Layout upon the setting of Burgi Geos Scheduled Monument.
- 5.3 The Applicant therefore removed turbines 1, 2, 3 and 7. The access tracks and hardstanding infrastructure associated with these turbines are also removed from the infrastructure design (i.e. borrow pit search area I, construction compound 3 and access tracks).

Landscape

- 5.4 Scottish Natural Heritage (SNH) raised concerns about the visual impacts on Shetland National Scenic Area (NSA). Therefore, in addition to the changes described in paragraph 5.3 above, the Applicant also removed turbines T4 and T29 and their associated infrastructure (i.e. borrow pit search area G and access tracks). The Applicant also reduced the maximum height of turbines T5, T24, T25, T26, T27 and T28, from 200 m to 180 m.
- 5.5 Following the public consultation (refer to Section 3 above) a number of comments were received from the public in relation to the visual impact of the Proposed Development on the residential properties at Sellafirth. The Applicant therefore reduced the height of an additional three turbines (T16, T19 and T20) from 200 m to 180 m to reduce the potential visual amenity from Sellafirth.

Other Concerns

- 5.6 Members of the public also raised concerns in relation to the impact of the Proposed Development on peatland habitat, breeding birds and the wider wildlife and habitat. The Applicant acknowledges that these have been key considerations throughout the design process of the Proposed Development and that the iterative design process has taken measures to minimise impacts while taking account of other constraints. The further reduction in turbines and associated infrastructure as part of the 2020 Layout has further reduced potential impacts on environmental receptors. The

Applicant is committed to implementing a Peat Management Plan to mitigate any impacts to peatland, along with a Habitat Management Plan (HMP). The HMP aims to implement positive land management for the benefit of nature conservation that will compensate for adverse impacts that the Proposed Development may have on habitats and species of conservation interest.

6 Conclusions

- 6.1 The Applicant has undertaken consultation with consultees, community councils and the general public. Consultation has been undertaken through a public exhibition, press releases and CLG meetings.
- 6.2 Following the consultation, the Applicant has considered the design of the Proposed Development, the environmental mitigation to be implemented and the assessment of the environmental effects, ensuring that where practicable, concerns raised are addressed.

Appendix 1 – Exhibition Advert & Poster



ENERGY ISLES WIND FARM

Energy Isles Shetland Ltd invites local residents to view updated proposals for the Energy Isles Wind Farm located approximately 1.5km west of Cullivoe and 1.1km south of Gloup, Yell

Details of the event to be held are as follows:

**TUESDAY 4th
FEBRUARY 2020
12.00pm – 7.00pm
Cullivoe Hall – Yell**

The exhibition will provide an opportunity to meet members of the project team who will be available to answer and provide any additional information or clarification as required.

Any persons requiring further information or wishing to make comments on the updated proposal prior to the submission of the Supplementary Environmental Information to Scottish Ministers may do so by writing directly to **Statkraft UK Ltd, 1 West Regent Street, Glasgow, G2 1RW** or by email to **doug.wilson@statkraft.com**.

Any comments or submissions received after Friday 21st February 2020 may not be considered.

Please note, comments made at this time do not constitute representations to Scottish Ministers. A further opportunity to make representations to Scottish Ministers will be available following the submission of the Supplementary Environmental Information.

The consultation is undertaken in accordance with Section 36 of the Electricity Act (Scotland) 1989.

For more information visit
www.statkraft.co.uk

Energy Isles Shetland Ltd invites local residents to view updated proposals for the Energy Isles Wind Farm located approximately 1.5km west of Cullivoe and 1.1km south of Gloup, Yell

Details of the event to be held are as follows:

**TUESDAY 4th
FEBRUARY 2020**
12.00pm – 7.00pm
Cullivoe Hall – Yell

The exhibition will provide an opportunity to meet members of the project team who will be available to answer and provide any additional information or clarification as required.

Any persons requiring further information or wishing to make comments on the updated proposal prior to the submission of the Supplementary Environmental Information to Scottish Ministers may do so by writing directly to **Statkraft UK Ltd, 1 West Regent Street, Glasgow, G2 1RW** or by email to doug.wilson@statkraft.com. Any comments or submissions received after Friday 21st February 2020 may not be considered.

Please note, comments made at this time do not constitute representations to Scottish Ministers. A further opportunity to make representations to Scottish Ministers will be available following the submission of the Supplementary Environmental Information.

The consultation is undertaken in accordance with Section 36 of the Electricity Act (Scotland) 1989.

For more information visit
www.statkraft.co.uk

Appendix 2 – Postal Response Card



Freepost STATKRAFT

Appendix 3 – Exhibition Banners

This Appendix contains photographs from the public exhibition and copies of the banners on show.







WELCOME

A warm welcome to this exhibition which is designed to update you on the progress of the Energy Isles Wind Farm. Members of the Energy Isles Shetland Team are on hand to answer any questions you may have, so please do feel free to ask.



Energy Isles Limited was founded in 2014 by a consortium of over fifty mainly Shetland-based companies working together to develop a plan for a wind farm in the North of Yell. Companies in the group come from a wide variety of existing sectors including fishing, aquaculture, crofting, marine engineering, renewable energy and support services. Several are based in the North Isles.

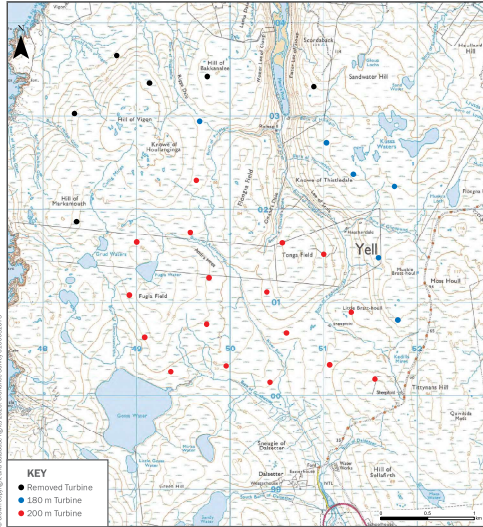


In 2019, Energy Isles Limited announced a development partnership with Statkraft, a leading international company and Europe's largest generator of renewable energy. The project now continues under the banner of Energy Isles Shetland Limited with the shared aim of designing and constructing a wind farm that maximises the benefits of Shetland's emerging renewable energy sector for the local community.

SANDS OF BRECKON | BRECKON, YELL



PROJECT EVOLUTION

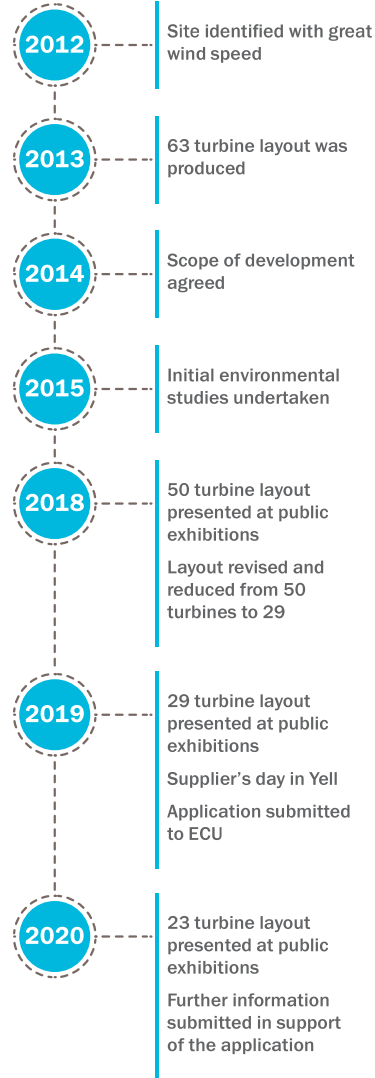


Current Facts and Stats

Number of Turbines	23
Turbine Tip Height	Up to 200m
Lifespan of Wind Farm	30 years
Installed Capacity	Approx. 160 MW
Energy Generation	Equivalent to around 185,000 homes per year*

* Information based on 160MW installed with capacity factor of 50%. Capacity factor calculated using current knowledge of site wind speed, supported by local operational data on Shetland. This may vary subject to turbines installed. Homes equivalent calculated using annual average domestic consumption of 3,726kWh (BEIS Dec 2018).

Energy Isles Wind Farm was first identified in 2012 and the project has evolved following several public consultation events and feedback from key statutory consultees. This feedback has led us to our final scheme seen here.



70% of Scotland's electricity demand was met by renewables in 2017.

[Scottish Government](#)

Onshore wind is the lowest cost form of new-build electricity generation in the UK.

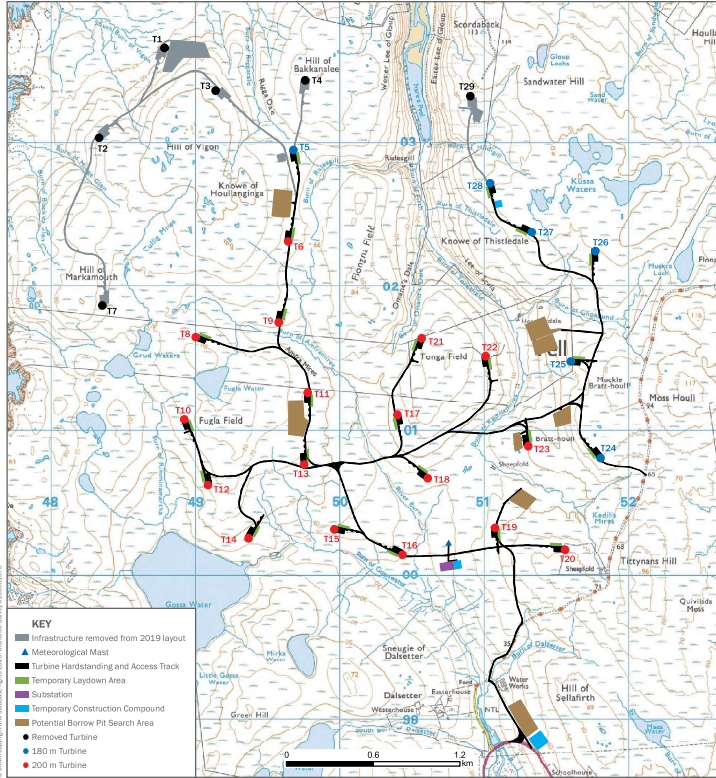
[Department for Business, Energy & Industrial Strategy](#)

Onshore wind generated revenues of £1.4 billion in 2017.

[Office of National Statistics](#)



DESIGN EVOLUTION



In response to consultee comments and subsequent consultation with Historic Environment Scotland, Scottish Natural Heritage, and Shetland Islands Council, the Proposed Development has undergone a series of design iterations to address concerns raised. Turbines 1, 2, 3, 4, 7 and 29 and their associated infrastructure (including two borrow pits) have been removed from the Proposed Development, and Turbines 5, 24, 25, 26, 27 and 28 have reduced in height from 200 m to 180 m.

These changes to the design have reduced the adverse impacts to the Shetland National Scenic Area and the setting of Burgi Geos promontory fort. The removal of the turbines to the north and north-west has also reduced the impact on ornithology by allowing un-interrupted access from the lochans in the centre of the site to the coast. The revised scheme reduces the volume of peat that will be disturbed and reduces the potential hydrogeological effects.

A modern wind turbine will pay back all the energy used in its production within the first year.

'Wind Energy' Royal Academy of Engineering, 2014

Onshore wind generates over £18m each year for Scottish communities.

Local Energy Scotland

Unless warming is kept below 1.5C, it is "likely" that the Arctic will see its first ice-free summer by 2050...

@CarbonBrief



LOCAL ECONOMY, EMPLOYMENT AND BUSINESS AND LOCAL DEVELOPMENT FUND

Creating Jobs, Boosting Economies

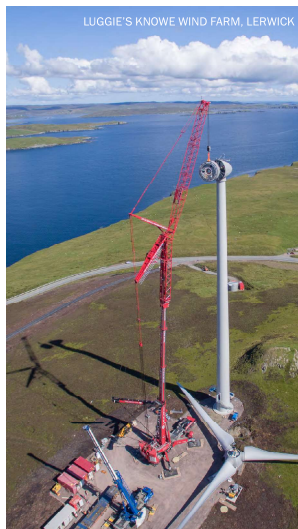
The renewable energy sector in Scotland is now a significant contributor to the local, regional, and national economy. If the Energy Isles Wind Farm is consented, there are very clear economic and industrial benefits to be delivered during the construction and operational phases of the project and we will invite local companies to tender for contracts. By using the local workforce where possible, the development can have a direct and positive effect on the local economy.

Shetland Renewable Development Network

We are pleased to be a part of the Shetland Renewable Development Network initiative. It can never be too early to start communicating information to the local supply chain and we have already held a dedicated supplier day event in Yell to speak to local businesses.

Local Development Fund

In consultation with the local Community Liaison Group, Energy Isles Shetland has committed to establishing a dedicated Community Benefit Fund for the Energy Isles Wind Farm. The fund will receive £5000 per MW installed as per the Scottish Governments best practice guidance. Based on a 160MW project, this would deliver £800,000 per year to the fund and £24 million over the 30 year life of the wind farm.



NEXT STEPS

1: Site Selection

The site was first looked at in 2012. Research has shown exceptionally good wind speed and minimal technical constraints on the site.

2: Pre Planning

The Energy Isles team has been working on the design and layout over the past 6 years to get to the design and layout you see today.

3: Application Submitted and Await Decision

Our application was submitted to the ECU in May 2019 and we will be submitting our supplementary information after this exhibition.

4: Construction

If approved, construction usually begins about a year after consent. Construction typically takes 24 months.

5: Operation

Turbines are managed by an inhouse maintenance team, and operations are controlled by detailed planning conditions.

6: Decommissioning

At the end of the planning period, turbines are removed and the site is restored. A parent company guarantee or financial bond is in place to cover this cost.

We intend to submit supplementary environmental information to the Energy Consents Unit after this exhibition. All the supplementary environmental information will be publicly available immediately after submission.

DA WHITE WIFE | OTTERSWICK, YELL



YOUR VIEWS ARE VERY IMPORTANT TO US

Please register your comments by handing your completed feedback form to one of the Energy Isles team or place it in the box by the door.

We will use the feedback from our exhibition today to make our final submission.

Thank you for taking the time to attend today's public exhibition.

Comments made today will be taken into consideration but are not representations to the planning authorities. There will be an opportunity to submit representations to the planning authorities after submission of the supplementary environmental information.



Appendix 4 – Response Cards

This Appendix summarises the responses collected from the Public Exhibition and the postal cards.

Response	Topic
Opposing Response	
Concern over quarry located near to Heatherdale.	Infrastructure
Concern over scale of development and landscape and visual impacts.	LVIA
Concern over impacts to breeding birds and on wild nature of Yell.	Ornithology, LVIA
Disagree with appropriateness of onshore wind turbine development. Suggest tidal or offshore wind would be more appropriate.	General
Concern over impacts to breeding birds, peatland habitat and the landscape impact.	Ornithology, Peat, LVIA
Concern over: <ul style="list-style-type: none"> - landscape impacts; - impacts on peatland habitat; - visual impact of quarry; - impact on birds and wildlife; and - lack of an economic energy benefit to locals. 	LVIA, Peat, Ornithology, Ecology, Socio-economic
Suggest a smaller scale project would be more appropriate, remove the 6 smaller turbines and reduce height of all. Concern over: <ul style="list-style-type: none"> - construction noise and health concerns; - peat instability; - impacts on wildlife; - impacts on heritage sites; - impact on tourism; and - loss of recreation area. 	Noise, Peat, Ecology, Cultural Heritage, Tourism & Recreation
Concern over impacts on wildlife, tourism, recycling upon decommissioning and lack of energy storage.	Ecology, Tourism, Infrastructure
Concerns over community benefit fund.	Socio-economic
Concerns over: <ul style="list-style-type: none"> - Size. - Benefit to the community. - Visual impact. - Impact on tourism. - Peat disturbance. - Destruction of habitat. - No local jobs. 	LVIA, Socio- economic, Tourism, Peat, Ecology
Concerns over landscape and visual impact to a remote area, and consequent impacts on tourism.	LVIA, Tourism
Concern over proposed borrow pit adjacent to Heatherdale. Suggests there are multiple old borrow pits nearby as alternatives.	Infrastructure
Concern over landscape and visual impact to a remote area.	LVIA
Concerns over landscape and visual impact to a remote area, and consequent impacts on tourism.	LVIA, Tourism
Questions why not fewer turbines. Concern over impacts on birds and peat. Query who is profiting.	General, Ornithology, Peat
Concern over: <ul style="list-style-type: none"> - visual impact; 	LVIA, Tourism,

Response	Topic
<ul style="list-style-type: none"> - scale of turbines; - impact on tourism; - proximity to residences; and - impact on planted trees at Heatherdale. 	Ecology
Concern over impacts on blanket bog and wildlife. Suggest there are better alternatives.	Peat, Ecology
Concern over impacts to breeding birds.	Ornithology
Against the development, and concerned over negative impacts.	General
Concern over landscape and visual impacts and resulting impact on tourism. Suggest offshore would be more appropriate.	LVIA, Tourism
Suggest alternative renewable energy sources are more appropriate. Concern over impact to residents, blanket bog and breeding birds.	LVIA, Peat, Ornithology
Concern over: <ul style="list-style-type: none"> - visual impact; - borrow pit at Heatherdale; - lack of profit for Shetland; - impact on tourism. 	LVIA, Infrastructure, Socio-economic, Tourism
Improvement. However still concern over: <ul style="list-style-type: none"> - drinking water; - peatland; - unclear benefit of peatland restoration work; - disruption during construction; and - impact of decommissioning. 	Hydrology, Peat, General
Neutral Response	
Suggest turbines should be moved to the higher grounds spreading out further north west	LVIA
Query whether there will be a benefit to Shetlanders energy bills as a direct result of the development.	Socio-economic
Request confirmation that there will be benefits in local energy prices.	Socio-economic
Query whether the Local Development Fund will be available to assist switching to cleaner energy and improve fuel efficiency.	Socio-economic
Supportive Response	
In support of wind farm.	General
In support of renewable energy and local community benefits.	General
Believe it is a good money generator for Isles with minimal environmental impact.	General

Appendix 5 – Community Liaison Group Minutes



Statkraft

Energy Isles Shetland Wind Farm

Community Liaison Group (CLG) Meeting 27th November 2019

6.30pm, Cullivoe Hall, Yell

Minutes

1. Present & Apologies

DW opened the meeting at 6.30pm and welcomed all those in attendance, noting apologies.

Present:

Doug Wilson (DW) - Smithy House Associates Ltd

Derek Jamieson (DJ) – Energy Isles

Charlotte Healey (CH) – Statkraft

Sharon Powell (SP) – Energy Isles

Lisa Ward (LW) – Energy Isles

Laurence Odie (LO) – Yell Community Council

Robert Jamieson (RJ) - Yell Community Council

Annette Jamieson (AJ) - Yell Community Council

Hazel Spence (HS) – Unst Community Council

Graham Hughson (GH) – representative for the Development Councils and Community Groups

Apologies:

Fetlar Community Council

Gordon Thomson (GT) – Unst Community Council

CH announced that Energy Isles had now officially been acquired by Statkraft in September 2019. A discussion was held around the timing of the announcement in the news and the official press release.

There were some concerns expressed that less of the benefits generated by the scheme would now stay on the island. CH confirmed that the local consortium of companies were still very much involved in the project but it was always the case that to make the project happen it would they would have to bring in a partner with the finances to deliver the project.

2. Action Points from the last minutes

The minutes of the last meeting were previously approved by the group and had been circulated to key stakeholders and uploaded to the Energy Isles website.

LW had contacted the schools around the proposed visit which had been requested by the pupils at the last exhibition. A meeting had been held with the Mid Yell Junior High School and the project team to discuss opportunities for Statkraft to engage with the school and a date of 22 April had been agreed for visits.

An action was agreed to contact Baltasound Junior High to set up a similar visit if required.

LW to contact the school. Progress will be followed up and updated at the next meeting.

3. Project Update

Planning

The Planning application had been submitted to the Energy Consents Unit in May and feedback had now been received.

Scottish Natural Heritage response to the application said they believed the project would have significant adverse effects on the special qualities of the Shetland National Scenic Area.

CH confirmed that after discussions with Scottish Natural Heritage, the project team are addressing their concerns by looking at reducing the number of turbines to reduce the impact on the Shetland NSA, and it is likely that approximately six turbines will be removed. These discussions have also led the team to consider reducing the height of certain turbines on the site.

The group discussed the economic viability of the generation capacity and the cost of the grid connection to Kergord. A wider discussion was had on the impact of climate change and the plans to reduce the scheme.

Public Engagement

A public consultation “drop-in” session will be held on the 4th of February 2020 which will show the details of the final scheme. DW explained that this was another opportunity for people to comment.

A discussion was held around the best venue to display the planning documentation and although the documents were lengthy the NTS provided a good overview. It was noted that these should be read in parallel with the original applications. All documents were also available for reference on the EI website.

It was agreed that the foyer of the Cullivoe Hall was the most suitable venue for public access at all times.

Following the drop-in session, additional information would be submitted to the ECU for the planning application to be re-assessed. It is hoped that the application will be considered by the Shetland Islands Council in May or June, but it was noted that it could take up to 12-18 months for consent to be granted by the ECU. If this went to appeal there would be up to a year's delay.

Landowners

Meetings are being organised to better understand the crofting issues in more detail. There were several comments from around the table that this process may be complicated. CH acknowledged that it would not be an easy process and there would be challenges to overcome.

CFD

It was noted that the project was three to four years away from bidding for a CFD.

5. Community and Economic Benefits

CH updated the group on progress with the Memorandum of Understanding (MOU). Statkraft had been doing a lot of work on this scheme and other schemes and will shortly be circulating a draft MOU to the CLG for comment and feedback. It was noted that this is a brief document confirming the intentions of Statkraft to deliver £5,000 per MW in line with the Scottish Governments guidelines.

It is hoped that the MOU will establish trust within the North Isles Residents and provide assurance that Statkraft are committed to the original intentions of the project to deliver a Community Benefit fund.

Statkraft presented a letter received from Shetland Community Benefit Ltd enquiring about the community benefit proposals for the scheme. Discussions centred around the premise that it was up to the CLG to decide how the fund is distributed, and the area of benefit that has always been discussed is within the North Isles. The SCBF were asking for it to be distributed through the whole of Shetland.

It was agreed that the CLG would take the letter and discuss within their Community Councils and a response would be agreed at the February CLG meeting.

Community AND Renewable Energy Scheme (CARES)

CARES representative Mark Brennan had met with Community Councils in February around community ownership and this had been a successful meeting.

The group were reminded that Community Benefit and Community ownership were completely separate, and this was not an area of expertise from EI. Therefore, CARES will hold meetings with the community and report back to the CLG. Another meeting had been planned but this had not yet happened as Mark Brennan had been off work.

GH noted that they were waiting for an offer from Statkraft about the Community Ownership which was on hold therefore they had not submitted their grant application to CARES.

An action was made for DW to find out more information on this and report back to GH.

6. AOB

Cullivoe Road upgrade

The proposed upgrading of the road towards Cullivoe was discussed following news that Councillors had given their backing to making the work a top priority. The decision was made at a meeting of the full Shetland Islands Council on Wednesday. The estimated total capital cost of the work is currently around £4.3 million.

Council staff had reported that the B9092 between Gutcher and the Cullivoe pier was "no longer considered fit for purpose due to the recent significant increase in the number of heavy

goods vehicles (HGVs) using the road". Roads staff have concluded that the only viable long-term solution is to build a new road on a new alignment, with enough width to suit the increasing use by HGVs.

OFGEM

The group discussed the recent decision on the HVDC link.

7. Future Meeting Dates

The next meeting date would be confirmed as soon as possible, it is expected to be week commencing 3rd February.

Meeting closed at 7.35pm



Statkraft

Energy Isles Shetland Wind Farm

Community Liaison Group (CLG) Meeting 03 February 2019

6.15pm, Cullivoe Hall, Yell

Minutes

1. Present & Apologies

DW opened the meeting at 6.15pm and welcomed all those in attendance, noting apologies.

Present:

Doug Wilson (DW) - Smithy House Associates Ltd

Derek Jamieson (DJ) – Energy Isles

Charlotte Healey (CH) – Statkraft

Sharon Powell (SP) – Energy Isles

Lisa Ward (LW) – Energy Isles

Laurence Odie (LO) – Yell Community Council

Robert Jamieson (RJ) - Yell Community Council

Annette Jamieson (AJ) - Yell Community Council

Andy Ross (AR) - Yell Community Council

Gordon Thomson (GT) – Unst Community Council

Graham Hughson (GH) – representative for the Development Councils and Community Groups

Andrew Nisbet (AN) – representative for the Development Councils and Community Groups

Apologies:

Fetlar Community Council

2. Action Points from the last minutes

The minutes of the last meeting were approved by the group and had been circulated to key stakeholders.

LW had contacted the schools around the proposed visit which had been requested by the pupils at the last exhibition. Meetings had been held between the Mid Yell Junior High School and the project team to discuss opportunities for Energy Isles Shetland to engage with the school, and it was agreed this will most likely happen in April. It was requested that LW should contact Baltasound Junior High School and to see if a similar visit would be useful.

There were two action points around Community and Renewable Energy Scheme (CARES) and Shetland Community Benefit Fund Ltd – both these points would be discussed later in the agenda.

3. Public Exhibition Tuesday 4 February 2020

The public consultation “drop-in” session will be held on the 4th of February 2020 and will show the details of the revised scheme and give people the opportunity to comment and ask questions

DW highlighted that leaflets detailing key points and the date and time of the consultation event had been sent to every household in the North Isles, approximately 850 houses, along with a freepost reply card to allow everyone the opportunity to attend if they wished and provide valuable feedback comments if they could not.

Posters had also been sent to key community venues for display.

The CLG noted and discussed the banner presentations: the decrease in turbine numbers from 29 to 23 and their associated infrastructure (including two borrow pits) and the decrease in height of 6 turbines from 200 m to 180 m. CH noted from the comments that the description of the site’s location did not include distance from Sellafirth and it would be useful to include this in future materials.

The changes to the design have reduced the adverse impacts to the Shetland National Scenic Area and the setting of Burgj Geos promontory fort. The removal of the turbines to the north and north-west has also reduced the impact on ornithology by allowing un-interrupted access from the lochans in the centre of the site to the coast. The revised scheme also reduces the volume of peat that will be disturbed.

4. Planning Update

CH explained in detail the design and project evolution and how feedback from the general public, and consultees including Scottish Natural Heritage and Historic Scotland had been accommodated in the updated design.

CH confirmed that feedback from the event and the posted reply cards will be read by Energy Isles Shetland, taken into account and included in the submission of Supplementary Environmental Information to the Energy Consents Unit in Spring.

It is expected that the consultation will be around 8 weeks.

5. Community and Economic Benefits

The draft Memorandum of Understanding (MOU) regarding the Community Benefit Fund had been circulated for comment and feedback. It was noted that this is a brief document which confirms Statkraft’s commitment to deliver £5,000 per MW in line with the Scottish Government guidance.

The MOU had been written in simple clean language and the group were asked for their thoughts. A small edit was suggested to reflect two people from each Community Council area instead of “Community Council representatives”.

The group discussed the level of the fund and the changes from 200MW to 160 MW.

DW agreed to clarify that and whether any advance payment could be made to help set up the group to look at the administration of the Community Benefit Fund. ACTION DW

Further to the changes above another draft would be re-issued. ACTION DW

The letter received from Shetland Community Benefit Fund Ltd enquiring about the community benefit proposals for the scheme was discussed. These discussions centred around the premise that it was up to the CLG to decide how the fund is distributed, and the area of benefit that has always been discussed is within the North Isles.

This had been discussed at the individual community councils and SP noted to contact Fetlar to receive their thoughts. ACTION SP

It was agreed that the chairs from the 3 Community Councils should discuss. ACTION ALL CC members.

Further to the group discussion DW will draft a holding letter to send to SCBF and circulate before the next CLG meeting. This would be finalised at the next meeting.

The group discussed how the Community Benefit Fund had marginally dropped from £1 million per annum to £800,000. This sum is based on the revised scheme of approximately 160MW and based on the deliver £5,000 per MW in line with the Scottish Governments guidelines

It was noted that the general public do not realise the amount of money which will be received via the CBF.

6. Shared Ownership

Energy Isles is committed to providing Shared Ownership with an opportunity to invest in the project, with support from Local Energy Scotland's Community and Renewable Energy Scheme (CARES).

The group were reminded that Community Benefit and Community ownership are separate, CARES can support members with shared ownership and how to progress with any feasibility work going forward.

Representatives from the Local Development Groups attended the CLG and they agreed to speak to Mark Brennan from CARES to update him on Statkraft's position. CH confirmed that an MOU on shared ownership would be sent to representatives from the Local Development Groups in the next few weeks.

GH noted that they were waiting on further information from Statkraft about the Community Ownership which was on hold therefore they had not submitted their grant application to CARES. CH clarified the timetable for agreeing shared ownership, with a formal and detailed offer not being made until the project had been consented.

7. AOB

The group discussed the Grid Connection and the uncertainty around VES LLP.

Questions were raised around the overhead lines and a representative from Savills Projects, Jim MacMillan, who is undertaking works for SSE on the lines, had been in touch with various groups and this should be followed up with him direct. ACTION ALL

The group raised a point with regards to question 2 on the comments cards for the exhibitions, which asks attendees if they think the changes to the scheme are an improvement or not. They pointed out that the answers to this question would give only quantitative data but no qualitative data to allow good interpretation, because a person may say "no" because they preferred the bigger scheme. This was accepted as an issue with the question and a discussion was had about how these kinds of questions could be avoided in future to ensure a fair and accurate response.

8. Future Meeting Dates

The next meeting date would be confirmed as soon as possible, it is expected to be the week commencing 23 March

Meeting closed at 7.35pm