



GIANT'S BURN WIND FARM

VIEWPOINTS

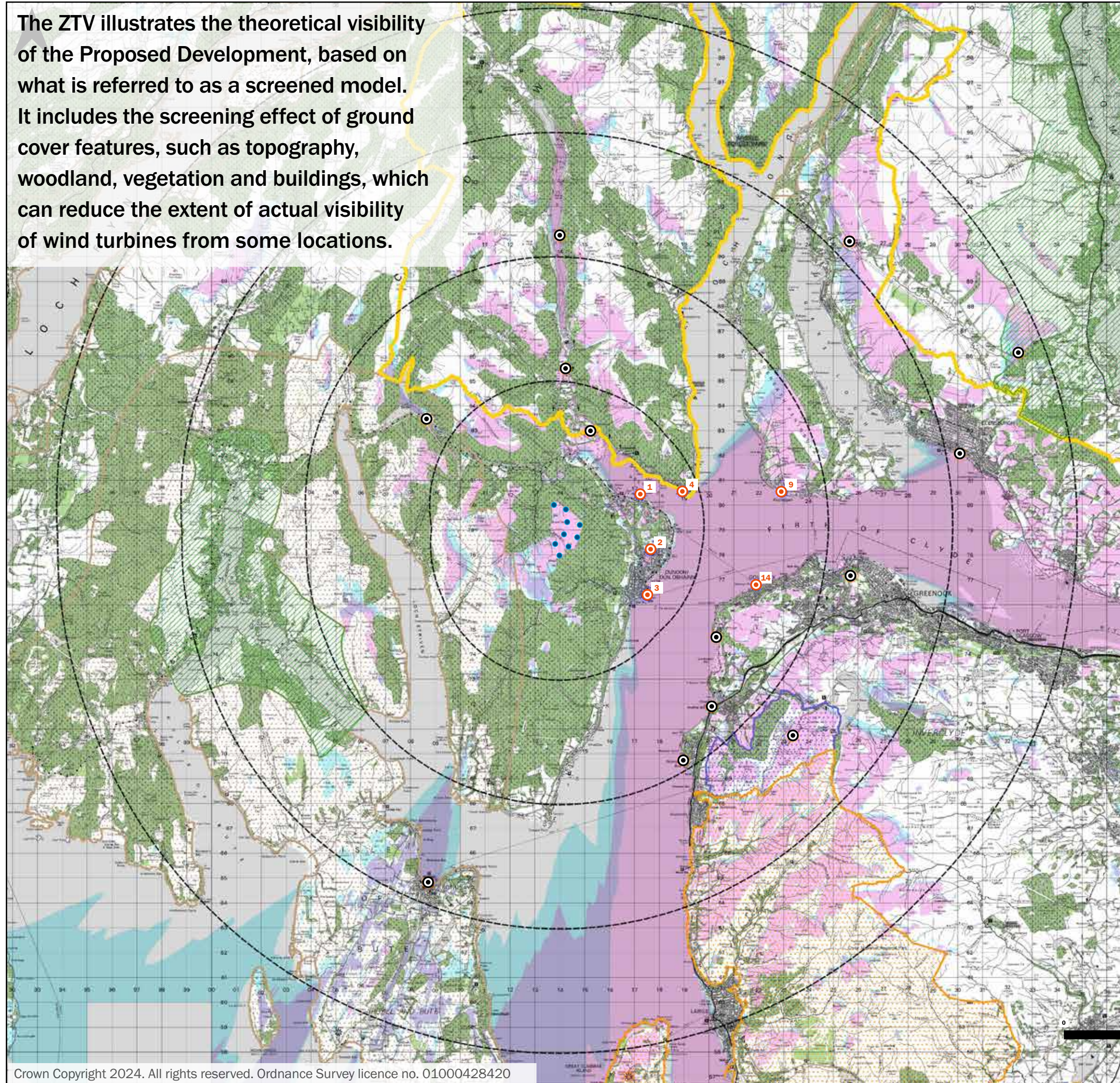
15 April – 5 May 2024

Six visualisations from local viewpoints have been provided to demonstrate how the proposed wind farm could look based on the current proposal of up to 9 turbines up to 200m to blade tip height. These illustrations provide a good representation of the current plans from several local viewpoints.

We are in the process of agreeing representative viewpoint locations with Argyll and Bute Council, Inverclyde Council and NatureScot to ensure the most suitable locations are selected to illustrate any visual effects of the wind farm. As the turbines are over 150m to tip height and will require aviation lighting, night time viewpoint locations are also being agreed.

We will hold another exhibition later this year. We expect the viewpoint locations to be agreed prior to the second exhibition and there will be another opportunity to view a selection of visualisations at that time.

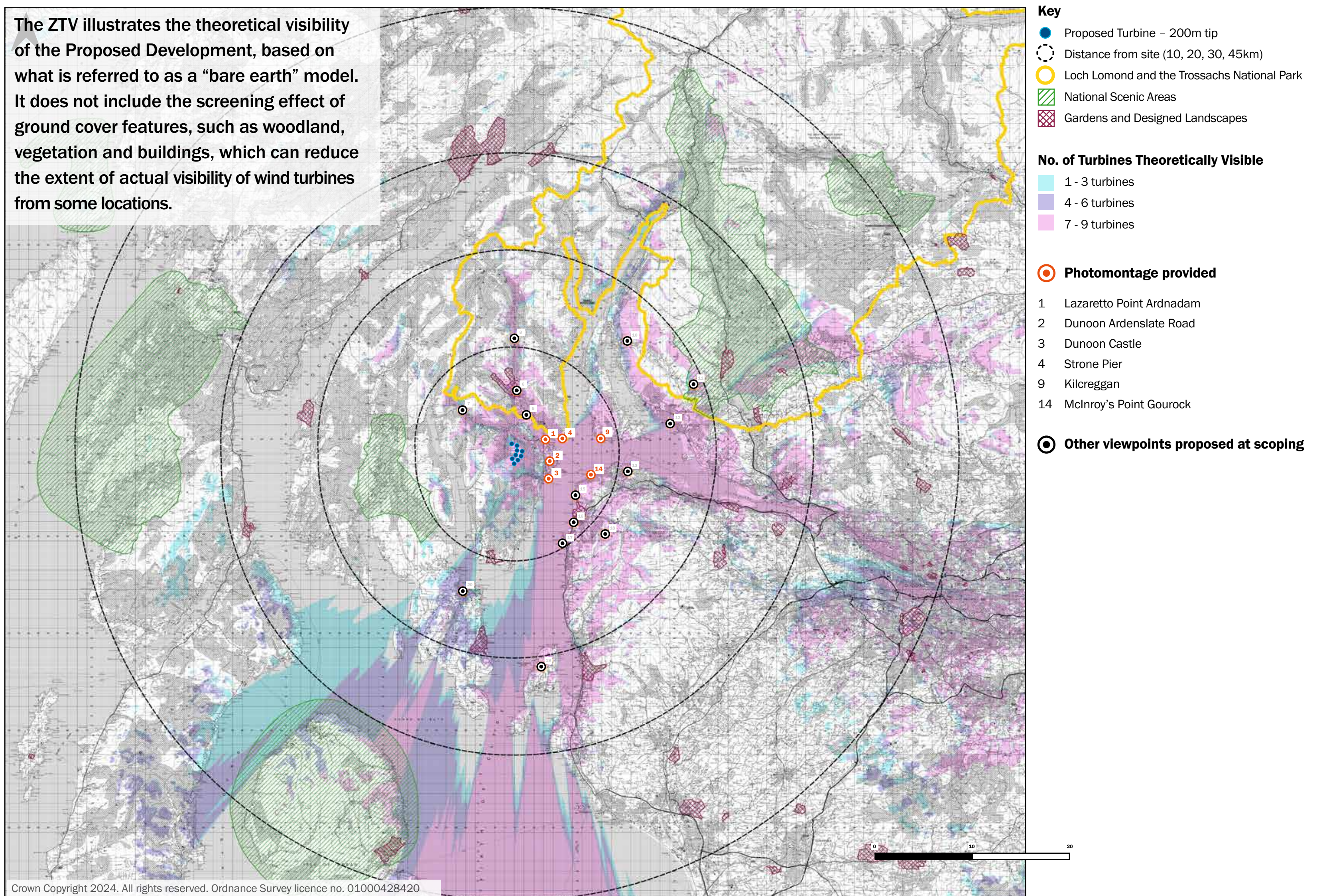
A full set of visualisations for each agreed viewpoint, which includes a baseline photo, a wireline and a photomontage of how the wind farm may look, will be provided as part of the Environmental Impact Assessment Report (EIAR) submitted as part of the application for the wind farm.



- Key**
- Proposed Turbine – 200m tip
 - Distance from site (5, 10, 15, 20km)
 - Loch Lomond and the Trossachs National Park
 - ▨ National Scenic Areas
 - ▨ Gardens and Designed Landscapes
 - ▨ Area of Panoramic Quality
 - ▨ Special Landscape Area
 - ▨ Local Landscape Area
 - ▨ Woodland
- No. of Turbines Theoretically Visible**
- 1 - 3 turbines
 - 4 - 6 turbines
 - 7 - 9 turbines
- Photomontage provided**
- 1 Lazaretto Point Ardnadam
 - 2 Dunoon Ardenslate Road
 - 3 Dunoon Castle
 - 4 Strone Pier
 - 9 Kilcreggan
 - 14 McInroy's Point Gourock
- Other viewpoints proposed at scoping**
-

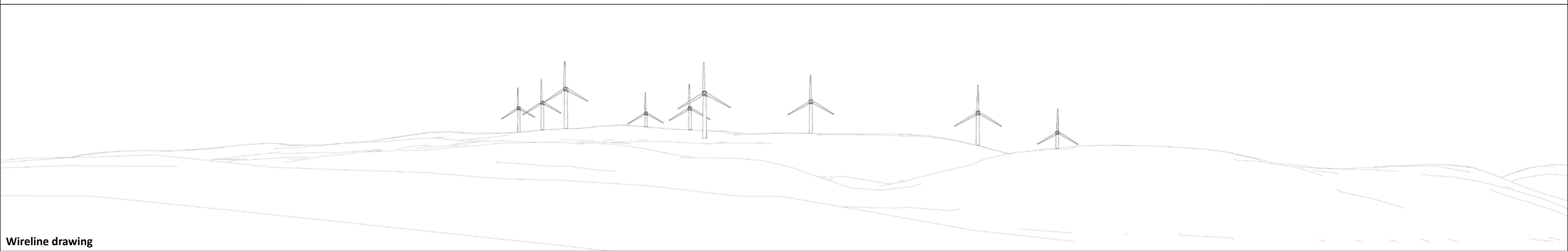
The image opposite is known as a Bare Earth Zone of Theoretical Visibility (ZTV). The image shows theoretically how many turbines you may be able to see, whether that is a full turbine or just a tip, from each location on the plan if there are no buildings or trees etc within the surroundings.

The image on the previous page shows the screened version of the ZTV, and the image takes into account topography, woodlands and buildings. As not all localised features are taken into account i.e. hedgerows or individual trees, the actual extent of visibility on the ground may be less that that suggested on the plan.



Viewpoint 1: Lazaretto Point Ardnadam

CURRENT VIEW WITH WIREFRAME

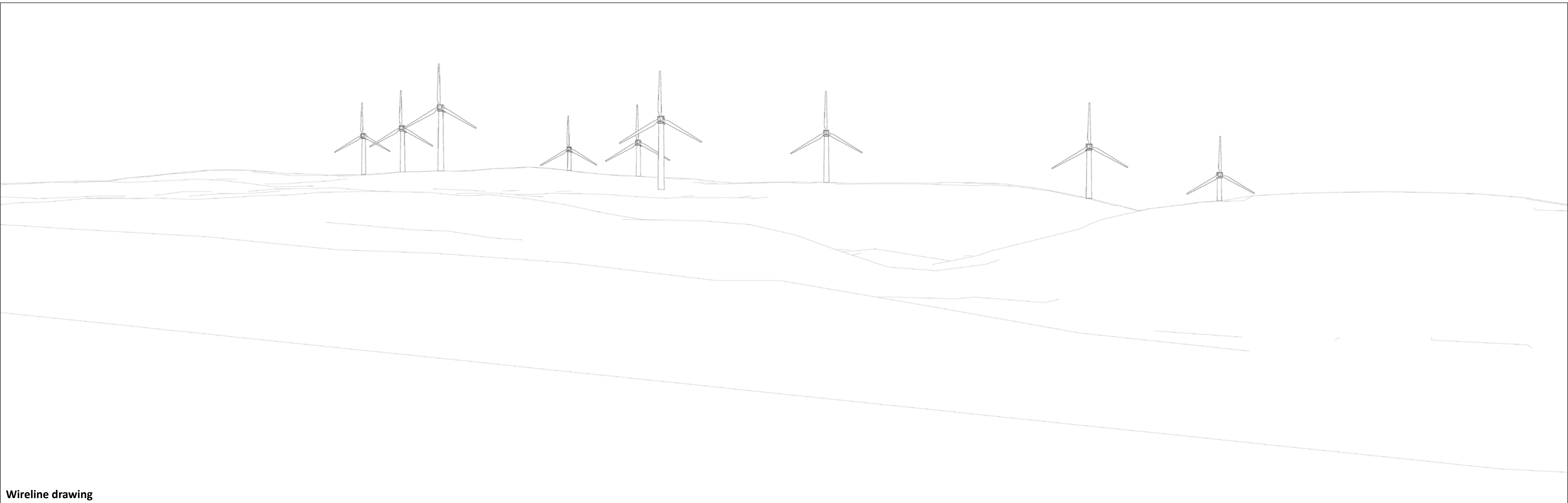


Wireline drawing

Photo showing current view.

Viewpoint 1: Lazaretto Point Ardnadam

WIREFRAME



Wireframe showing current proposed layout.
Based on current proposal of 9 @ 200m to blade tip height.

Viewpoint 1: Lazaretto Point Ardnadam

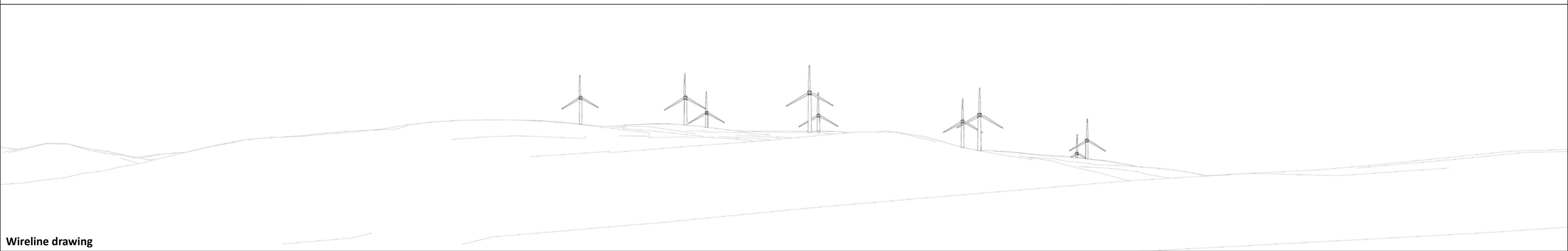
PREDICTED VIEW



Photomontage showing current proposed layout.
Based on current proposal of 9 @ 200m to blade tip height.

Viewpoint 2: Dunoon Ardenslate Road

CURRENT VIEW WITH WIREFRAME

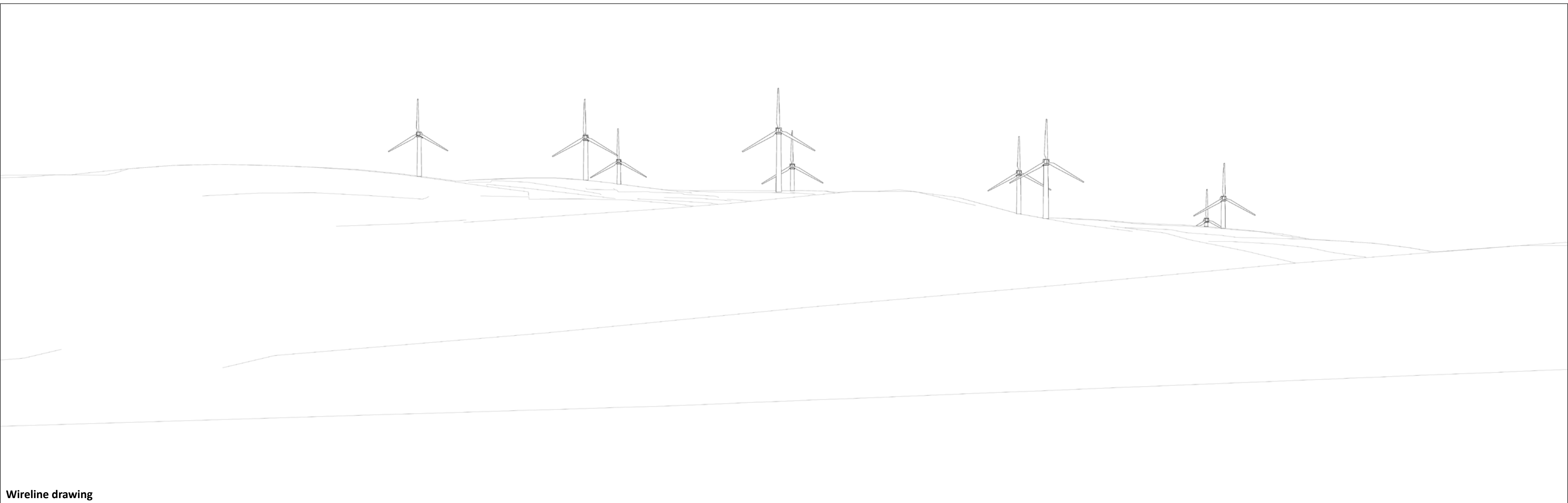


Wireline drawing

Photo showing current view.

Viewpoint 2: Dunoon Ardenslate Road

WIREFRAME



Wireframe showing current proposed layout.
Based on current proposal of 9 @ 200m to blade tip height.

Viewpoint 2: Dunoon Ardenslate Road

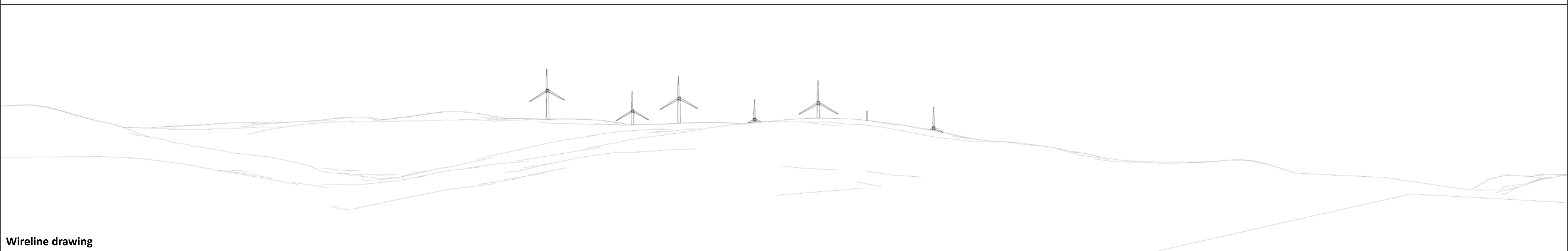
PREDICTED VIEW



Photomontage showing current proposed layout.
Based on current proposal of 9 @ 200m to blade tip height.

Viewpoint 3: Dunoon Castle

CURRENT VIEW WITH WIREFRAME

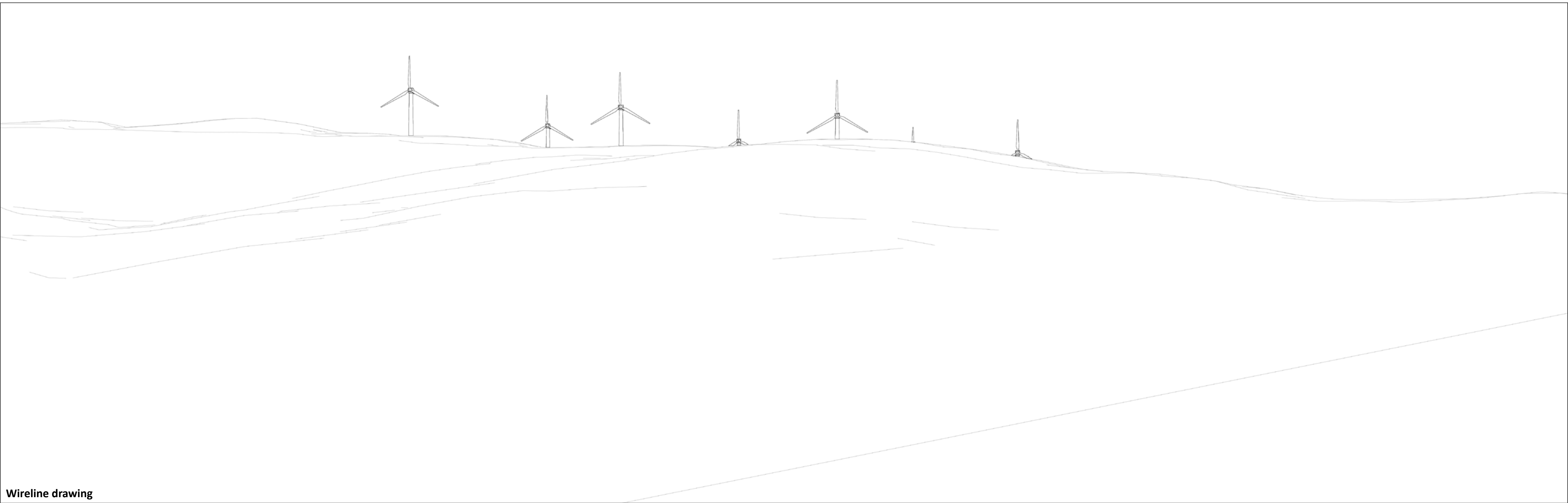


Wireline drawing

Photo showing current view.

Viewpoint 3: Dunoon Castle

WIREFRAME



Wireline drawing

Wireframe showing current proposed layout.
Based on current proposal of 9 @ 200m to blade tip height.

Viewpoint 3: Dunoon Castle

PREDICTED VIEW



Photomontage showing current proposed layout.
Based on current proposal of 9 @ 200m to blade tip height.

Viewpoint 4: Strone Pier

CURRENT VIEW WITH WIREFRAME

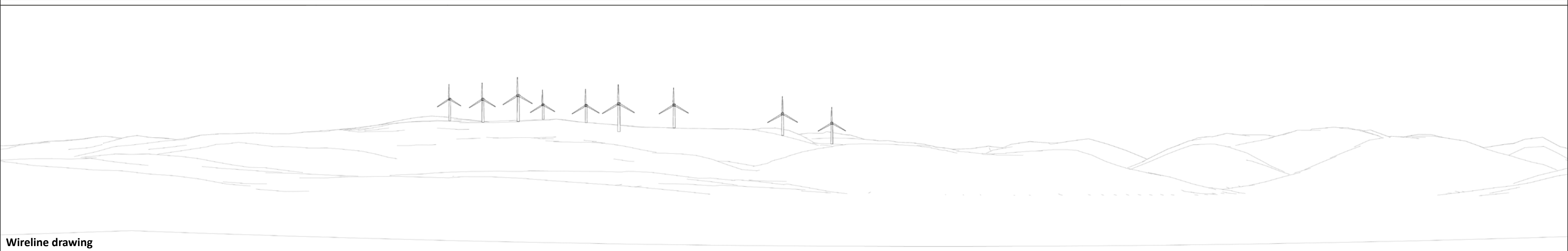
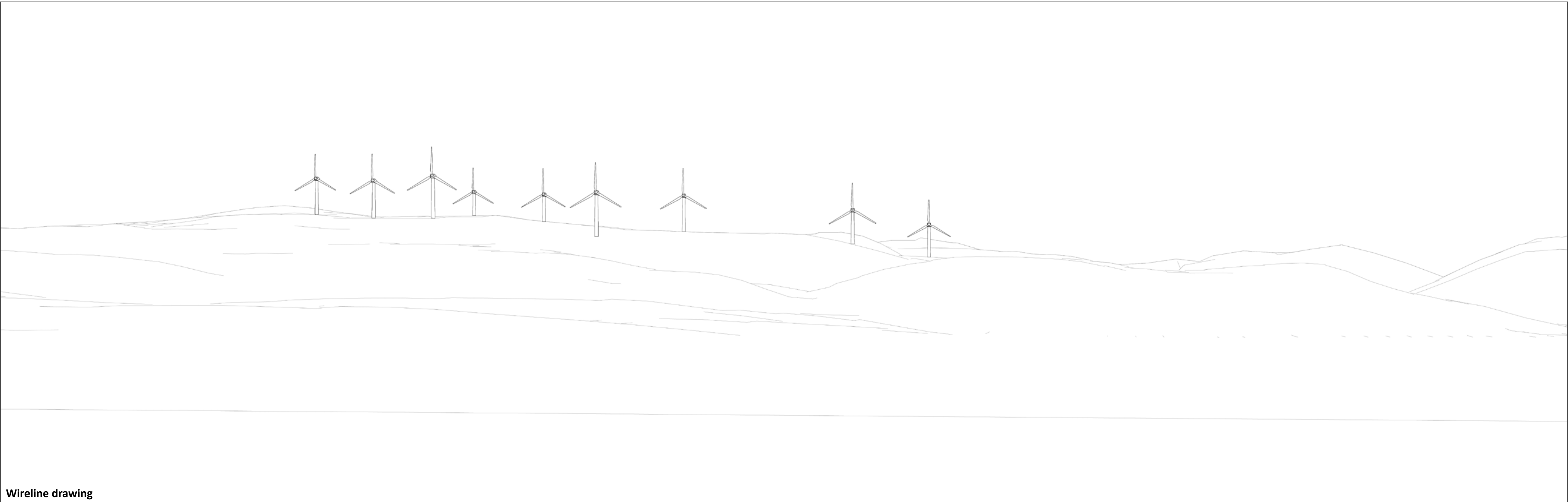


Photo showing current view.

WIREFRAME



Wireframe showing current proposed layout.
Based on current proposal of 9 @ 200m to blade tip height.

Viewpoint 4: Strone Pier

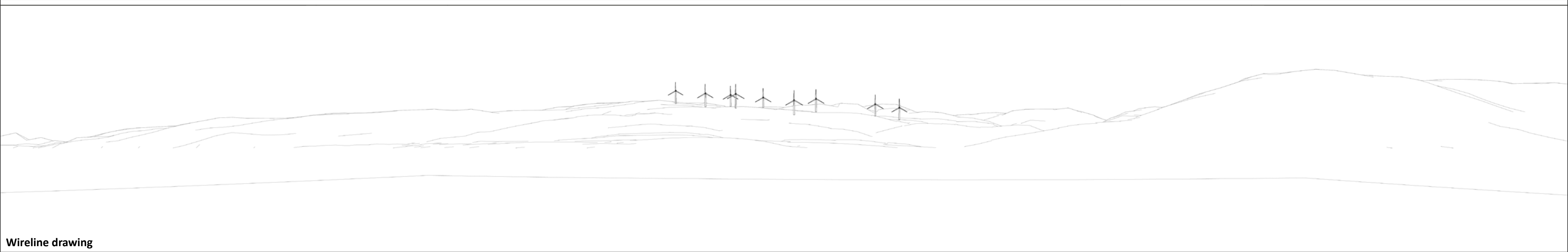
PREDICTED VIEW



Photomontage showing current proposed layout.
Based on current proposal of 9 @ 200m to blade tip height.

Viewpoint 9: Kilcreggan

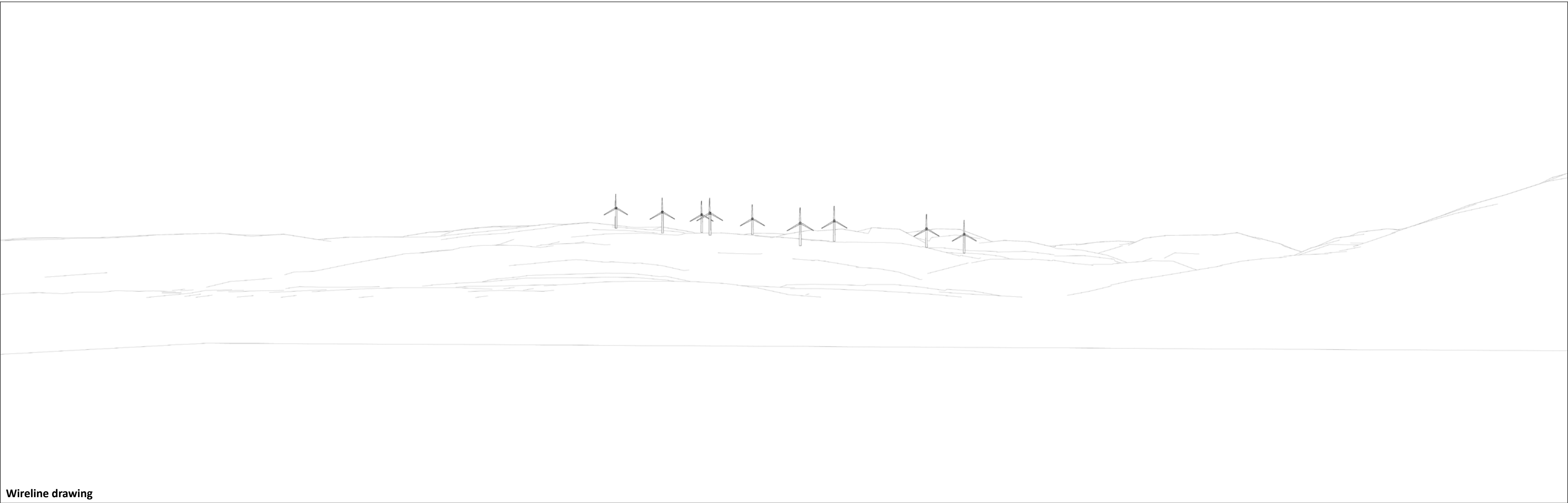
CURRENT VIEW WITH WIREFRAME



Wireline drawing

Photo showing current view.

WIREFRAME



Wireframe showing current proposed layout.
Based on current proposal of 9 @ 200m to blade tip height.

Viewpoint 9: Kilcreggan

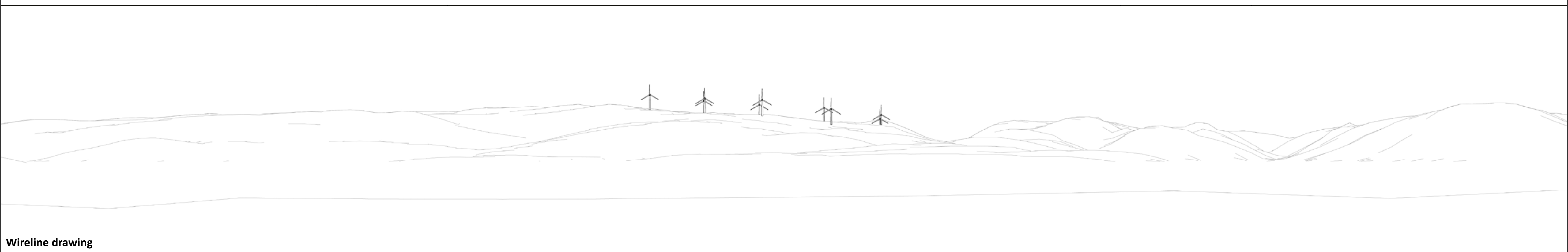
PREDICTED VIEW



Photomontage showing current proposed layout.
Based on current proposal of 9 @ 200m to blade tip height.

Viewpoint 14: McInroy's Point Gourock

CURRENT VIEW WITH WIREFRAME

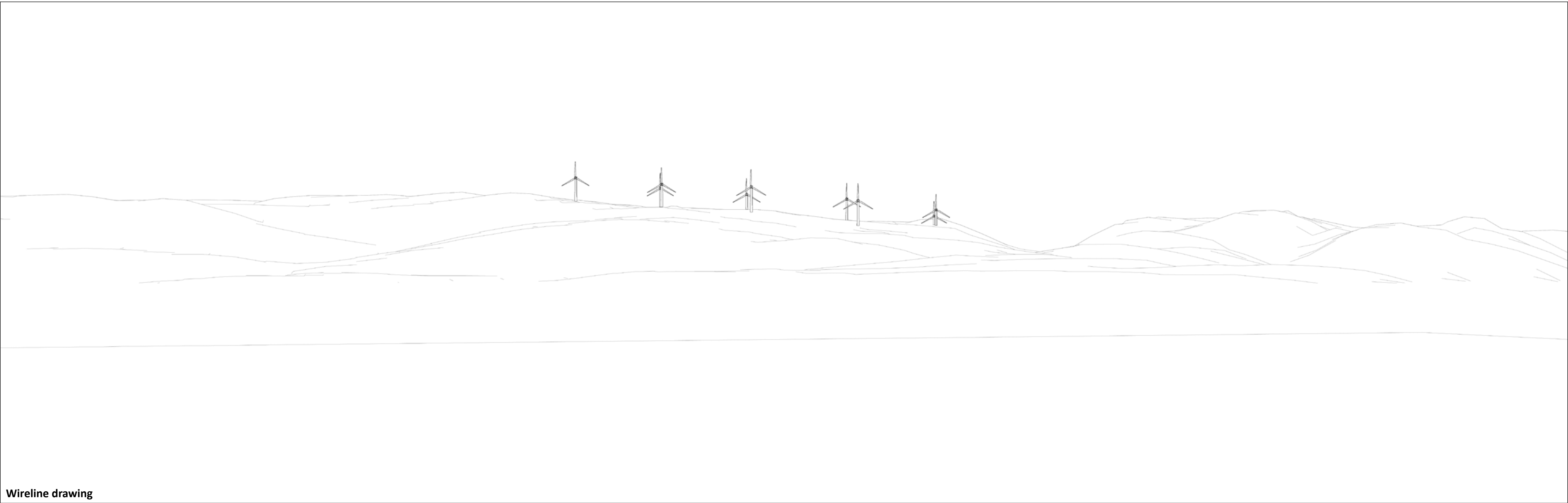


Wireline drawing

Photo showing current view.

Viewpoint 14: McInroy's Point Gourock

WIREFRAME



Wireframe showing current proposed layout.
Based on current proposal of 9 @ 200m to blade tip height.

Viewpoint 14: McInroy's Point Gourock

CURRENT VIEW WITH WIREFRAME



Photomontage showing current proposed layout.
Based on current proposal of 9 @ 200m to blade tip height.

[Return to the Virtual Exhibition](#)