



-  Panorama with Wireline (90° HFOV)
-  Photomontage with Wireline (53.5° HFOV)

Existing View

This view looks out from a path within the Clyde Muirshiel Regional Park. At the viewpoint location, a nearby valley channels views out to the west and northwest, whilst views in other directions are curtailed by nearby rising ground.

Predicted Change

The proposed turbines would be seen on the open skyline beyond the Firth of Clyde, above the forestry on hills above Dunoon. One of the turbine bases would be seen in front of a more distant hill beyond. This location is unlikely to be visited at night.

Cumulative

It is likely that all or most of the turbines at Inverchaolain wind farm (depending on its final design) may be visible from this viewpoint, seen to the left of the Proposed Development.

0 0.5 1 1.5 km



Produced By: ABU

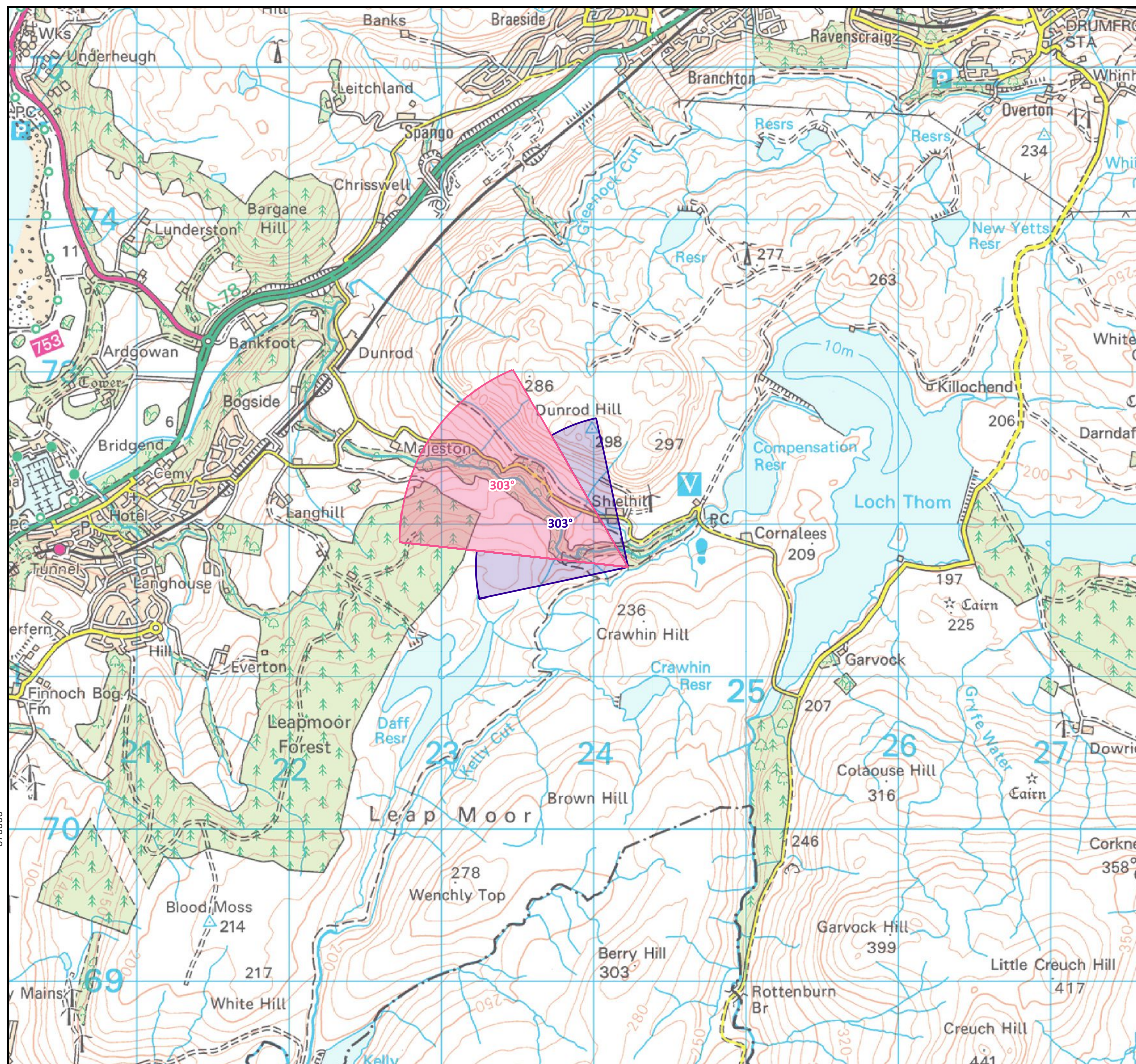
Version: 1.0

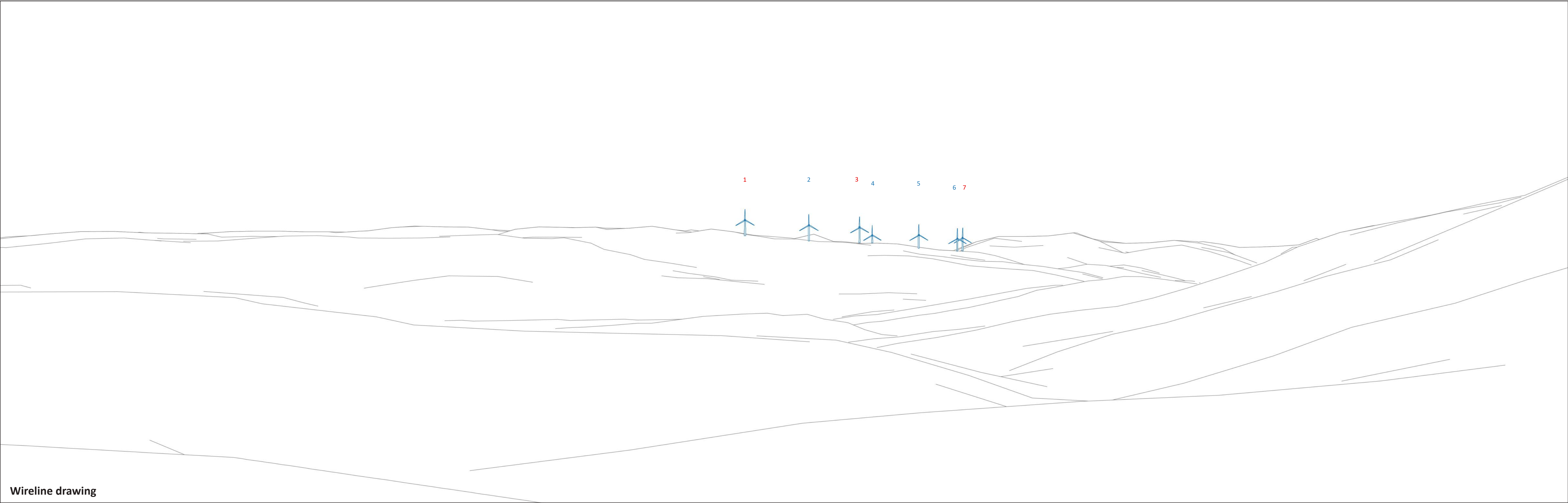
Checked By: AWA

Date: 01/07/2025

VP18 - Kelly Cut

Giant's Burn Wind Farm
EIA Report





Wireline drawing

Viewpoint Location: E224187 N671680	Field of View: 53.5° (planar)	2, 4, 5, 6: Turbine without Aviation Lighting	Wireline Key:	
Viewpoint Elevation: 180m AOD	Principal Distance: 812.5mm	1, 3, 7: Turbine with Aviation Lighting	 Giant's Burn Turbines	 In Planning Turbines
View Direction: 303°	Paper size: 841 x 297mm		 Operational Turbines	 Scoping Turbines
Nearest Proposed Turbine: 11.7km	Printed image size: 820 x 260mm		 Consented Turbines	

Viewpoint 18: Kelly Cut



Viewpoint Location:	E224187 N671680	Field of View:	53.5° (planar)	Camera:	Nikon D610
Viewpoint Elevation:	180m AOD	Principal Distance:	812.5mm	Lens:	50mm (Nikkor)
View Direction:	303°	Paper size:	841 x 297mm	Camera Height:	1.5 AGL
Nearest Proposed Turbine:	11.7km	Printed image size:	820 x 260mm	Date and Time:	03/04/2025 11:16

Viewpoint 18: Kelly Cut