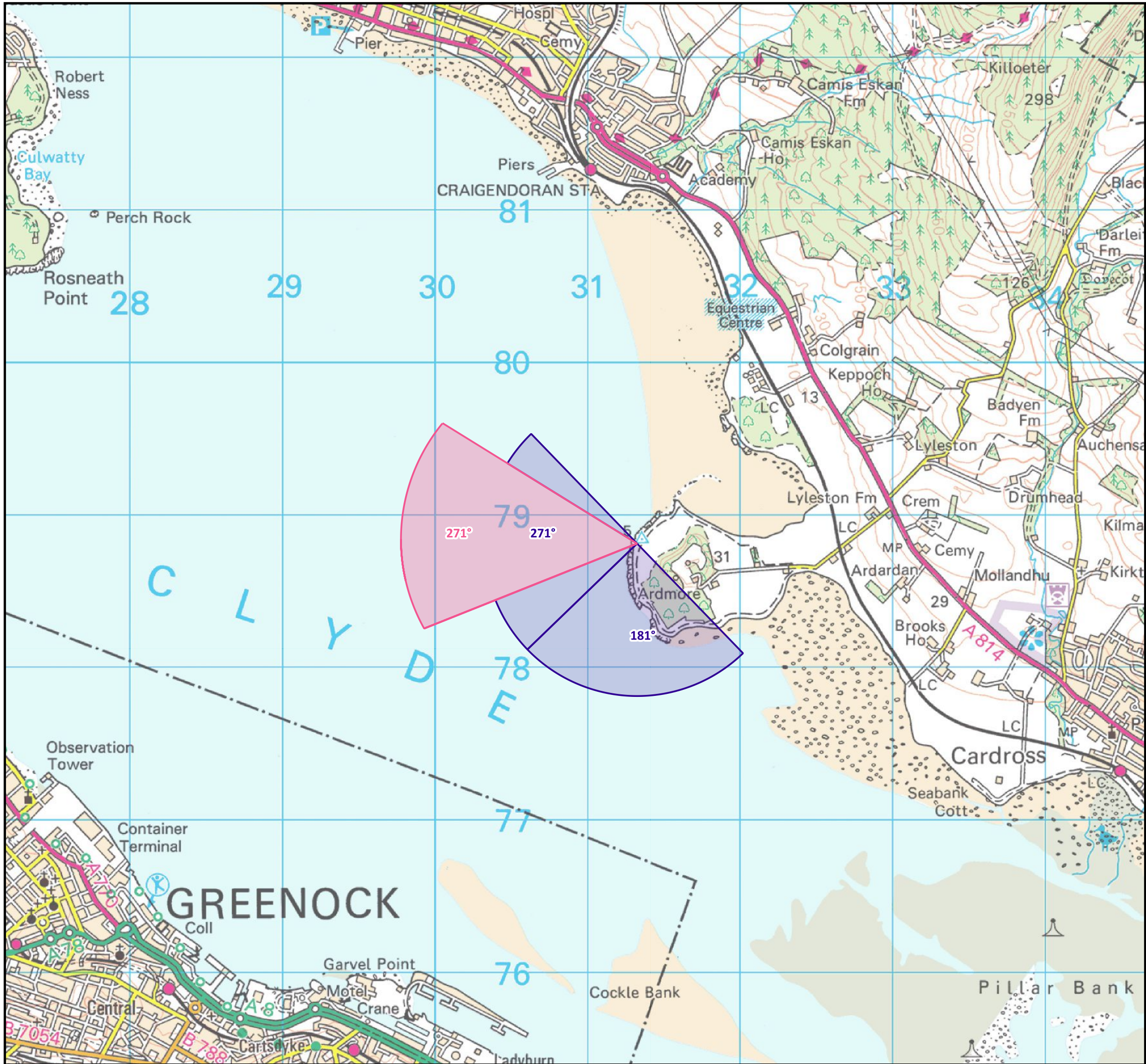


230000



- Panorama with Wireline (90° HFOV)
- Photomontage with Wireline (53.5° HFOV)

Existing View

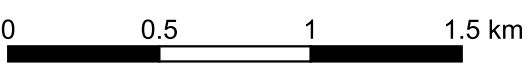
This view looks out from the path around Ardmore peninsula. There is an open view out across the water including south-west towards Greenock, longer views towards Dunoon to the west, and towards the Rosneath Peninsula and hills beyond to the north-west. Coastal settlements are seen in all directions, and the Rosneath mast and port cranes are notable tall structures, along with Inverclyde wind farm, seen on the skyline looking along the coastal path to the south. Inland views are screened by vegetation.

Predicted Change

The Proposed Development would be seen looking west, on the skyline above Dunoon and the partly forested hillside. Most of the turbines would be seen set in front of more distant hills beyond. At night, all three of the aviation lights would be visible in the distance, seen in the context of lights in the costal settlements and brighter nearby lights at the port, including red flashing lights on the two port cranes.

Cumulative

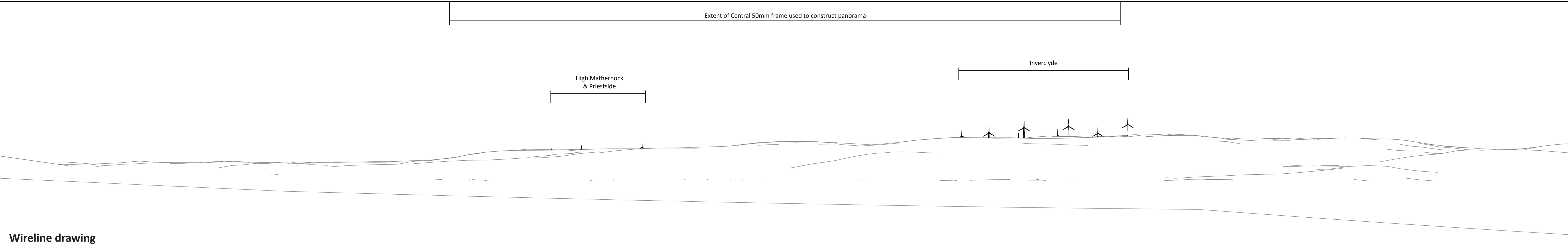
It is likely that all or most of the turbines at Inverchaolain wind farm (depending on its final design) may be visible from this viewpoint, seen on the skyline to the left of the Proposed Development.



Produced By: ABU	Version: 1.0
Checked By: AWA	Date: 01/07/2025

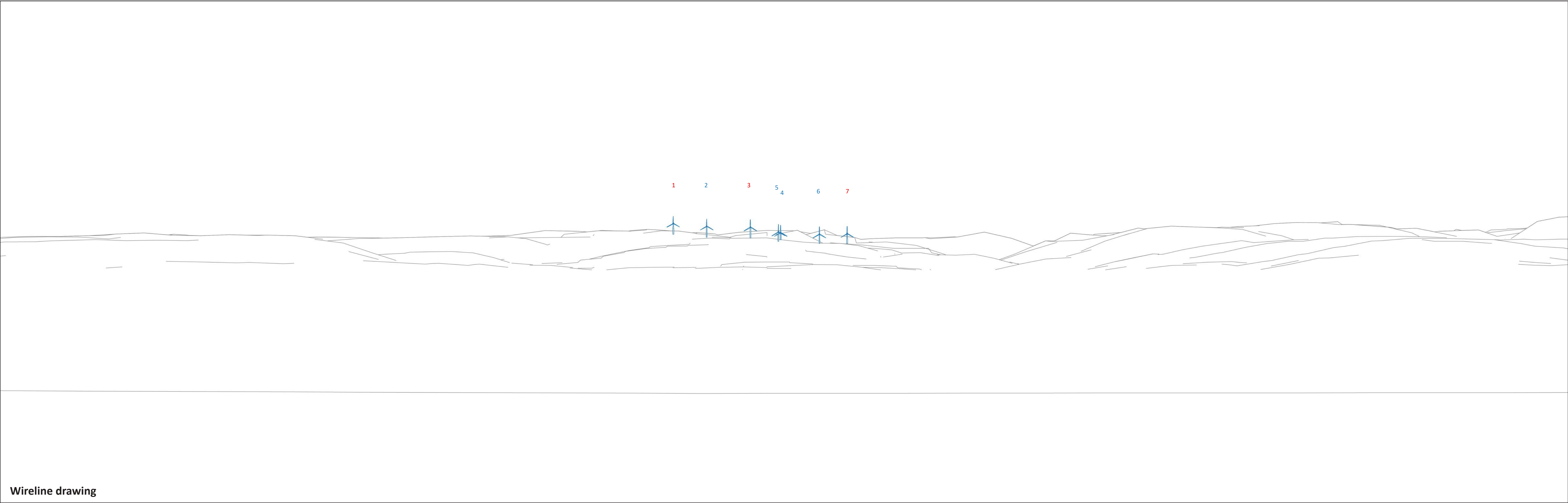
VP21 - Ardmore Point

Giant's Burn Wind Farm
EIA Report



Viewpoint Location:	E231323 N678801	Field of View:	90° (cylindrical)	Camera:	Nikon D610	Wireline Key:	
Viewpoint Elevation:	1m AOD	Principal Distance:	522mm	Lens:	50mm (Nikkor)	<div></div> Giant's Burn Turbines	<div></div> In Planning Turbines
View Direction:	181°			Camera Height:	1.5 AGL	<div></div> Operational Turbines	<div></div> Scoping Turbines
Nearest Proposed Turbine:	16.6km			Date and Time:	12/03/2025 09:05	<div></div> Consented Turbines	

Viewpoint 21: Ardmore Point



Wireline drawing

Viewpoint Location:	E231323 N678801	Field of View:	53.5° (planar)	2, 4, 5, 6:	Turbine without Aviation Lighting	Wireline Key:	
Viewpoint Elevation:	1m AOD	Principal Distance:	812.5mm	1, 3, 7:	Turbine with Aviation Lighting	Giant's Burn Turbines	In Planning Turbines
View Direction:	271°	Paper size:	841 x 297mm			Operational Turbines	Scoping Turbines
Nearest Proposed Turbine:	16.6km	Printed image size:	820 x 260mm			Consented Turbines	

Viewpoint 21: Ardmore Point



Viewpoint Location:	E231323 N678801	Field of View:	53.5° (planar)	Camera:	Nikon D610
Viewpoint Elevation:	1m AOD	Principal Distance:	812.5mm	Lens:	50mm (Nikkor)
View Direction:	271°	Paper size:	841 x 297mm	Camera Height:	1.5 AGL
Nearest Proposed Turbine:	16.6km	Printed image size:	820 x 260mm	Date and Time:	12/03/2025 09:05

Viewpoint 21: Ardmore Point