

Have Your Say

Throughout the process Statkraft will engage with the local community and stakeholders around the project.

We are continuing to work on refining our proposal for our comprehensive Environmental Impact Assessment Report (EIAR) to be submitted with our future application. You can find out more about what is included within the EIAR on our project website.

We welcome your comments and feedback. Please register your comments by completing a feedback form by **21 April 2025**.

We plan to submit our application in early summer 2025. We will advertise when this has happened. There will be an opportunity to submit a formal representation about your views on the project to the Scottish Government Energy Consents Unit.



Please return the freepost reply card provided.



Phone the project hotline: 0800 772 0668



www.giants-burn.co.uk



UKProjects@statkraft.com

INDICATIVE TIMELINE

- FEBRUARY 2024**
Scoping Submitted
- APRIL 2024**
1st Exhibition
- SPRING 2025**
2nd Exhibition
- SUMMER 2025**
Application Submitted
- SUMMER 2027**
Application Determined
- LATEST SPRING/
SUMMER 2028**
Construction Commenced
(if consented)
- LATEST SPRING/
SUMMER 2030**
Operation for up to 50 Years

Statkraft UK Ltd
The Garment Factory,
10 Montrose Street,
Glasgow G1 1RE

Giant's Burn Wind Farm Public Consultation 31 March – 21 April 2025



Thank you for attending the second public consultation for Giant's Burn Wind Farm.

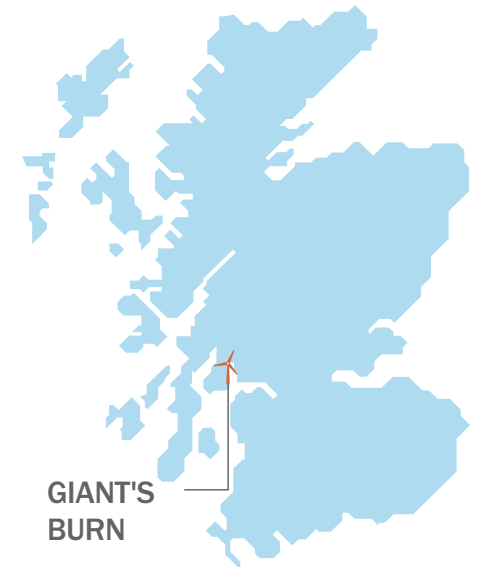
Feedback and ongoing studies over the past 12 months have informed the design we are presenting at our five in-person exhibitions and online exhibition.

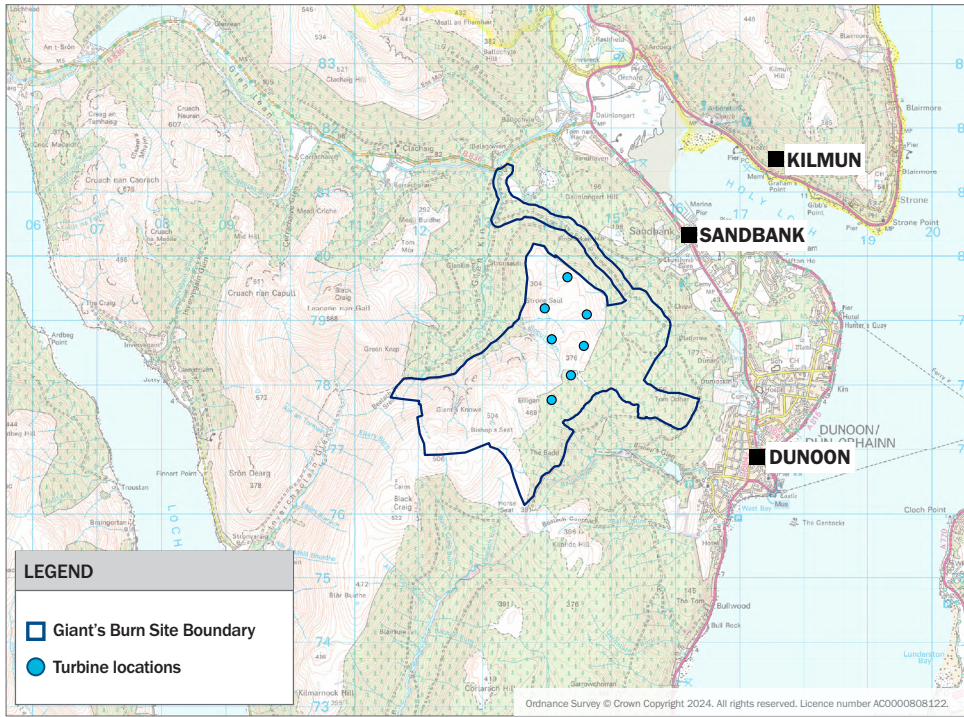
The proposal reduces the number of turbines from nine to seven: six turbines with a maximum blade tip height of up to 200 metres and one turbine with a maximum tip height of 180 metres.

Why here?

Our studies to date indicate that this is a good wind farm location:

- **excellent wind resource**
- **suitable grid connection available**
- **no nationally or internationally designated sites within the site boundary**
- **compatible with existing farming, forestry and recreational use**





Community Benefits

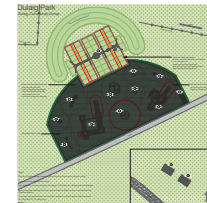


We like our wind farms to be considered a local asset. We look forward to hearing your suggestions on different ways the project can bring positive benefits to the local area.

Some examples of projects that have received funding through Community Benefit Funds



New business grants – North Coast Watersports



New and upgraded playgrounds



Funding for School Uniform Banks



Maintaining and Upgrading Recreational Paths

Giant's Burn Wind Farm

No. of Turbines	Max Blade Tip Heights	Expected Installed Capacity (MW)
Up to 7	Up to 200m	Approx 50MW
Estimated Generation (homes equivalent)	Community Fund (per year)	Battery Energy Storage System Installed Capacity
Around 60,000 Homes per year (1)	A minimum of £250,000 per year (2)	20MW

- (1) Based on 50MW Installed Capacity, wind resource assessment and average Scottish domestic consumption of 3078kWh pa (DESNZ Jan 2024)
- (2) Community Benefit Fund based on 50MW x £5k per MW of installed capacity. If consented, value of fund determined by actual installed capacity.

Community Benefit Fund

We are committed to setting up a Community Benefit Fund that delivers £5,000 per MW installed wind capacity per year in line with Scottish Government recommendations.

Shared Ownership

We are open to offering shared ownership on our projects. We have started early discussions with a local group around shared ownership opportunities.

Improved Broadband

We require a reliable broadband service to operate our wind turbines and have also commissioned a study to explore the potential for improving the local broadband infrastructure in hard-to-reach areas. The community may wish to explore this further with us.

Local Supply Chain

We want to engage with local businesses to increase awareness of opportunities during the construction and operation of our projects.

Scan the QR code to register your local business:

