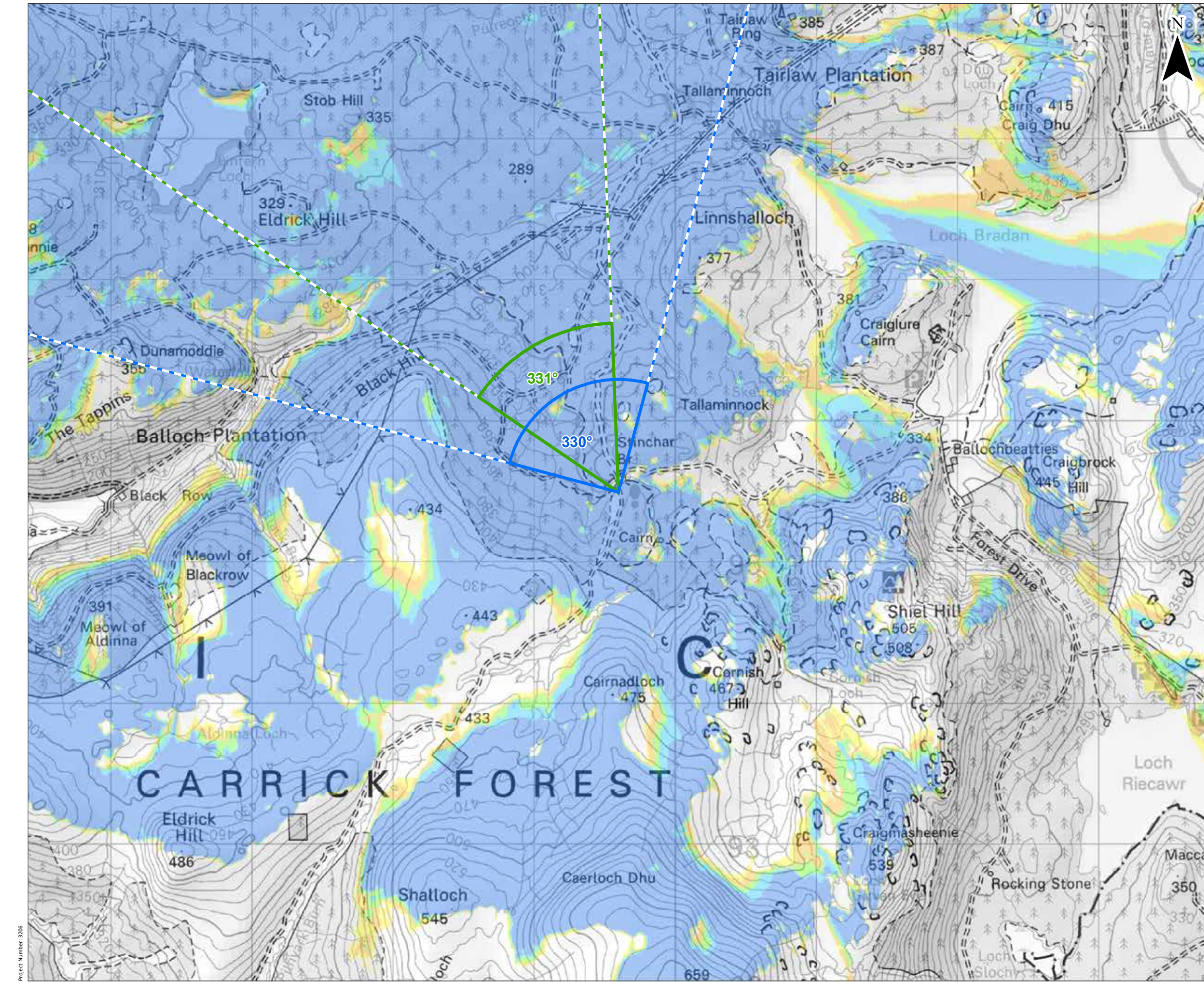


© Crown copyright and database rights 2021. Ordnance Survey 0100031673. Contains OS data © Crown copyright and database right (2021).



© Crown copyright and database rights 2021. Ordnance Survey 0100031673. Contains OS data © Crown copyright and database right (2021).

**KEY**

- Site Boundary
- Proposed Turbine
- 10 km Radii
- 45 km LVIA Study Area
- Viewpoint Location
- Panorama with Wireline (90°HFOV)
- Photomontage and Wireline (53.5°HFOV)

**Blade Tip ZTV**

**No. of Turbines Theoretically Visible**

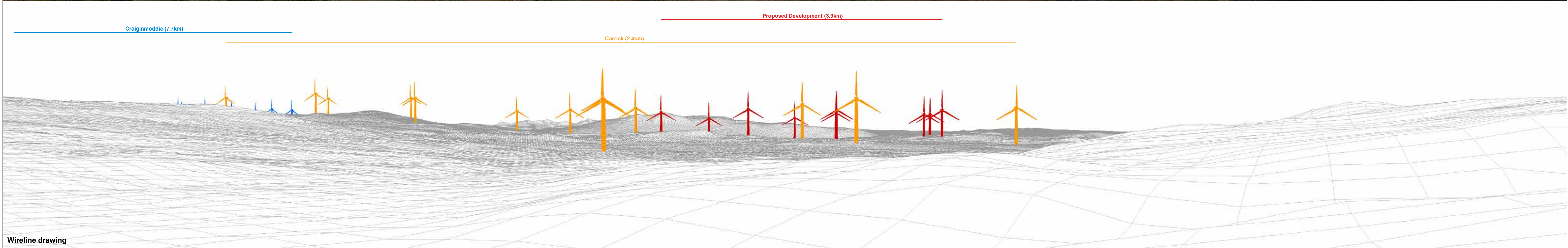
- 1 - 2
- 3 - 4
- 5 - 6
- 7 - 8
- 9

Blade tip: 180 / 200m | Observer height: 2m  
 DTM: OS T5/T50 DTM | Surface features: Excluded  
 DTM resolution: 10m | Earth curvature: Included

0 0.5 1 km  
 Scale 1:25,000 @ A3

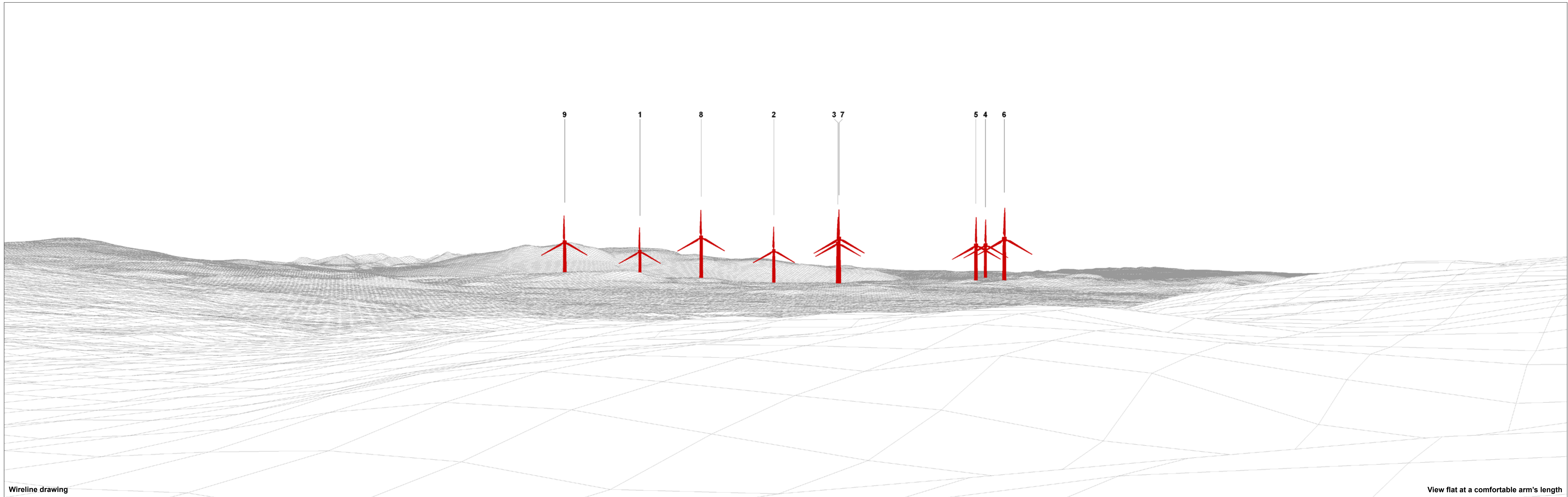
Knockcronal Wind Farm  
 Environmental Impact Assessment Report  
 Figure 6.23a  
 Viewpoint 3: Minor Road near Stinchar Bridge

Date: 08/11/2021 | Drawn by: JM | Checked by: SG | Version: V1



<b>OS reference:</b> 239597 E 595494 N	<b>Horizontal field of view:</b> 90° (cylindrical projection)	<b>Camera:</b> Canon EOS 5D
<b>Eye level:</b> 361.2 mAOD	<b>Principal distance:</b> 522 mm	<b>Lens:</b> Canon EF 50mm f/1.5
<b>Direction of view:</b> 330°	<b>Paper size:</b> 841 x 297 mm (half A1)	<b>Camera height:</b> 1.5 m
<b>Nearest turbine:</b> 3896 m	<b>Correct printed image size:</b> 820 x 130 mm	<b>Date and time:</b> 17/09/2020 10:30

**Figure 6.23b**  
Viewpoint 3: Minor Road near Stinchar Bridge  
Knockcronal  
© Crown copyright. All rights reserved (2021). Licence number 0100031673



Wireline drawing

View flat at a comfortable arm's length

OS reference: 239597 E 595494 N  
 Eye level: 361.2 mAOD  
 Direction of view: 331°  
 Nearest turbine: 3896 m

Horizontal field of view: 53.5° (planar projection)  
 Principal distance: 812.5 mm  
 Paper size: 841 x 297 mm (half A1)  
 Correct printed image size: 820 x 260 mm

Camera: Canon EOS 5D  
 Lens: Canon EF 50mm f/1.5  
 Camera height: 1.5 m  
 Date and time: 17/09/2020 10:30

Figure 6.23c  
 Viewpoint 3: Minor Road near Stinchar Bridge  
 Knockcronal  
© Crown copyright, All rights reserved (2021). Licence number 0100031673



Photomontage: Proposed Development

View flat at a comfortable arm's length

<b>OS reference:</b>	239597 E 595494 N	<b>Horizontal field of view:</b>	53.5° (planar projection)	<b>Camera:</b>	Canon EOS 5D
<b>Eye level:</b>	361.2 mAOD	<b>Principal distance:</b>	812.5 mm	<b>Lens:</b>	Canon EF 50mm f/1.5
<b>Direction of view:</b>	331°	<b>Paper size:</b>	841 x 297 mm (half A1)	<b>Camera height:</b>	1.5 m
<b>Nearest turbine:</b>	3896 m	<b>Correct printed image size:</b>	820 x 260 mm	<b>Date and time:</b>	17/09/2020 10:30

Figure 6.23d  
Viewpoint 3: Minor Road near Stinchar Bridge  
Knockcronal  
© Crown copyright. All rights reserved (2021). Licence number 0100031673