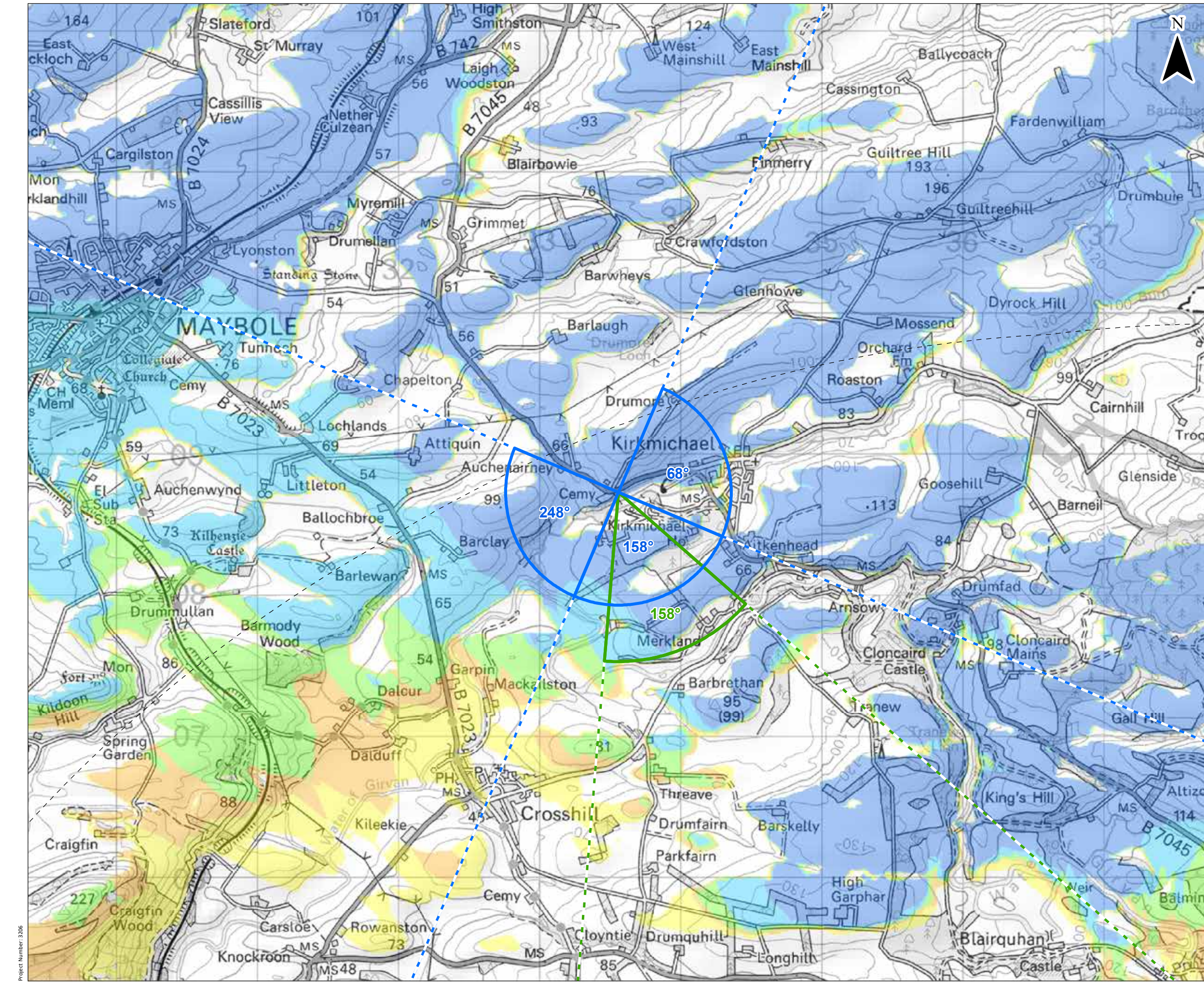


© Crown copyright and database rights 2021. Ordnance Survey 0100031673. Contains OS data © Crown copyright and database right (2021).



© Crown copyright and database rights 2021. Ordnance Survey 0100031673. Contains OS data © Crown copyright and database right (2021).

KEY

- Site Boundary
- Proposed Turbine
- 10 km Radii
- 45 km LVIA Study Area
- Viewpoint Location
- Panorama with Wireline (90°HFOV)
- Photomontage and Wireline (53.5°HFOV)

Blade Tip ZTV

No. of Turbines Theoretically Visible

- 1 - 2
- 3 - 4
- 5 - 6
- 7 - 8
- 9

Blade tip: 180 / 200m | Observer height: 2m
 DTM: OS T5/T50 DTM | Surface features: Excluded
 DTM resolution: 10m | Earth curvature: Included

0 0.5 1 km

Scale 1:25,000 @ A3

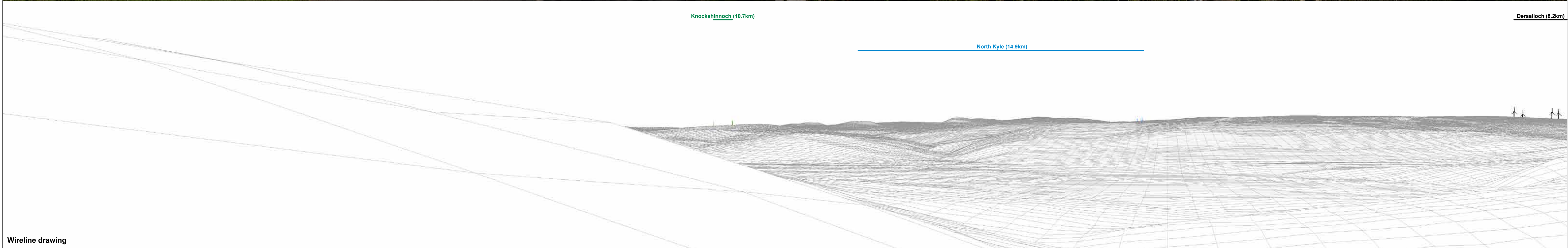
Knockcronal Wind Farm
 Environmental Impact Assessment Report
 Figure 6.30a
 Viewpoint 10: B7045, west of Kirkmichael

Date: 08/11/2021 | Drawn by: JM | Checked by: SG | Version: V1



Baseline photograph

This image provides landscape and visual context only



Wireline drawing

OS reference: 233558 E 608730 N
 Eye level: 69.9 mAOD
 Direction of view: 68°
 Nearest turbine: 9560 m

Horizontal field of view: 90° (cylindrical projection)
 Principal distance: 522 mm
 Paper size: 841 x 297 mm (half A1)
 Correct printed image size: 820 x 130 mm

Camera: Canon EOS 5D
 Lens: Canon EF 50mm f/1.4
 Camera height: 1.5 m
 Date and time: 17/09/2020 14:55

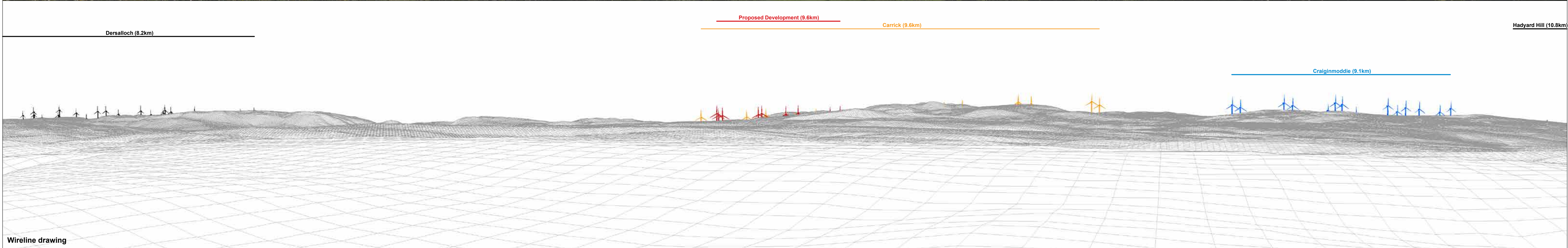
Figure 6.30b
 Viewpoint 10: B7045, west of Kirkmichael
 Knockcronal

© Crown copyright. All rights reserved (2021). Licence number 0100031673



Baseline photograph

This image provides landscape and visual context only



Wireline drawing

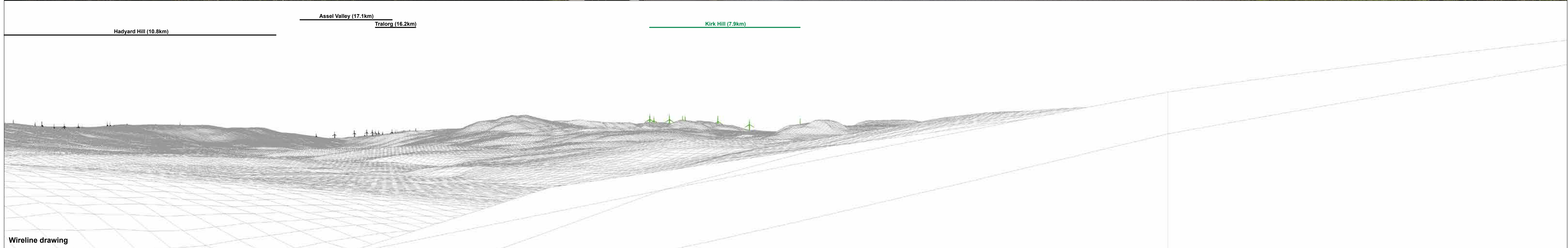
OS reference: 233558 E 608730 N	Horizontal field of view: 90° (cylindrical projection)	Camera: Canon EOS 5D
Eye level: 69.9 mAOD	Principal distance: 522 mm	Lens: Canon EF 50mm f/1.4
Direction of view: 158°	Paper size: 841 x 297 mm (half A1)	Camera height: 1.5 m
Nearest turbine: 9560 m	Correct printed image size: 820 x 130 mm	Date and time: 17/09/2020 14:55

Figure 6.30c
Viewpoint 10: B7045, west of Kirkmichael
Knockcronal
© Crown copyright. All rights reserved (2021). Licence number 0100031673



Baseline photograph

This image provides landscape and visual context only



Wireline drawing

OS reference: 233558 E 608730 N
 Eye level: 69.9 mAOD
 Direction of view: 248°
 Nearest turbine: 9560 m

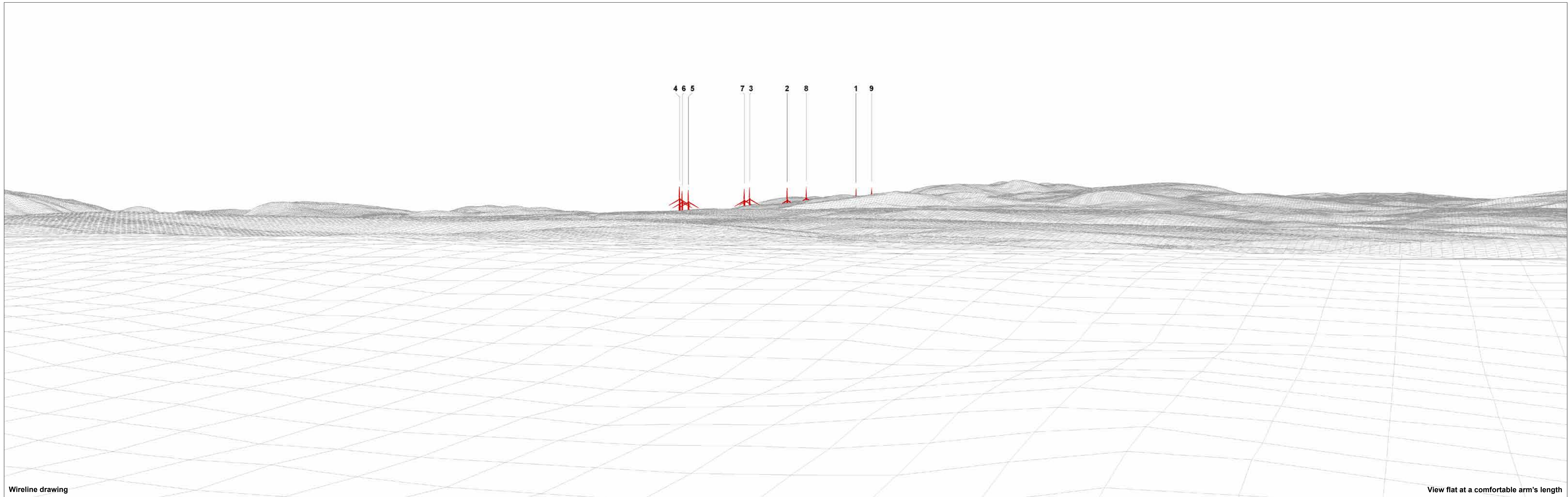
Horizontal field of view: 90° (cylindrical projection)
 Principal distance: 522 mm
 Paper size: 841 x 297 mm (half A1)
 Correct printed image size: 820 x 130 mm

Camera: Canon EOS 5D
 Lens: Canon EF 50mm f/1.4
 Camera height: 1.5 m
 Date and time: 17/09/2020 14:55

Figure 6.30d
 Viewpoint 10: B7045, west of Kirkmichael

Knockcronal

© Crown copyright. All rights reserved (2021). Licence number 0100031673



Wireline drawing

View flat at a comfortable arm's length

OS reference: 233558 E 608730 N
Eye level: 69.9 mAOD
Direction of view: 158°
Nearest turbine: 9560 m

Horizontal field of view: 53.5° (planar projection)
Principal distance: 812.5 mm
Paper size: 841 x 297 mm (half A1)
Correct printed image size: 820 x 260 mm

Camera: Canon EOS 5D
Lens: Canon EF 50mm f/1.4
Camera height: 1.5 m
Date and time: 17/09/2020 14:55

Figure 6.30e
Viewpoint 10: B7045, west of Kirkmichael
Knockcronal
© Crown copyright. All rights reserved (2021). Licence number 0100031673



Photomontage: Proposed Development

View flat at a comfortable arm's length

OS reference: 233558 E 608730 N
Eye level: 69.9 mAOD
Direction of view: 158°
Nearest turbine: 9560 m

Horizontal field of view: 53.5° (planar projection)
Principal distance: 812.5 mm
Paper size: 841 x 297 mm (half A1)
Correct printed image size: 820 x 260 mm

Camera: Canon EOS 5D
Lens: Canon EF 50mm f/1.4
Camera height: 1.5 m
Date and time: 17/09/2020 14:55

Figure 6.30f
Viewpoint 10: B7045, west of Kirkmichael
Knockcronal
© Crown copyright. All rights reserved (2021). Licence number 0100031673