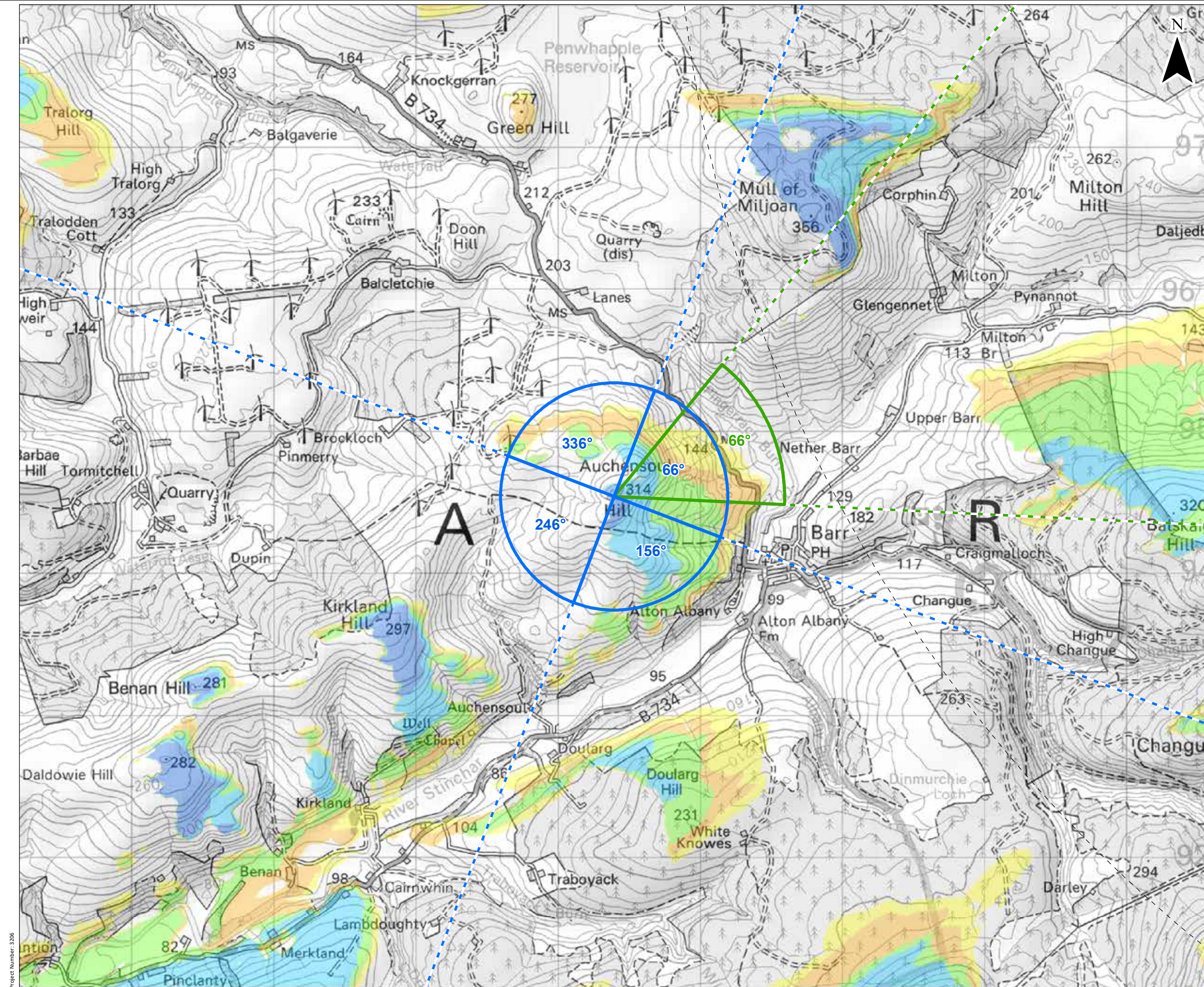


© Crown copyright and database rights 2021. Ordnance Survey 0100013673. Contains OS data © Crown copyright and database right (2021).



© Crown copyright and database rights 2021. Ordnance Survey 0100013673. Contains OS data © Crown copyright and database right (2021).

KEY

- Site Boundary
- Proposed Turbine
- 10 km Radii
- 45 km LVIA Study Area
- Viewpoint Location
- Panorama with Wireline (90°HFOV)
- Photomontage and Wireline (53.5°HFOV)

Blade Tip ZTV

No. of Turbines Theoretically Visible

	1 - 2
	3 - 4
	5 - 6
	7 - 8
	9

Blade tip: 180 / 200m | Observer height: 2m
 DTM: OS T5/T50 DTM | Surface features: Excluded
 DTM resolution: 10m | Earth curvature: Included

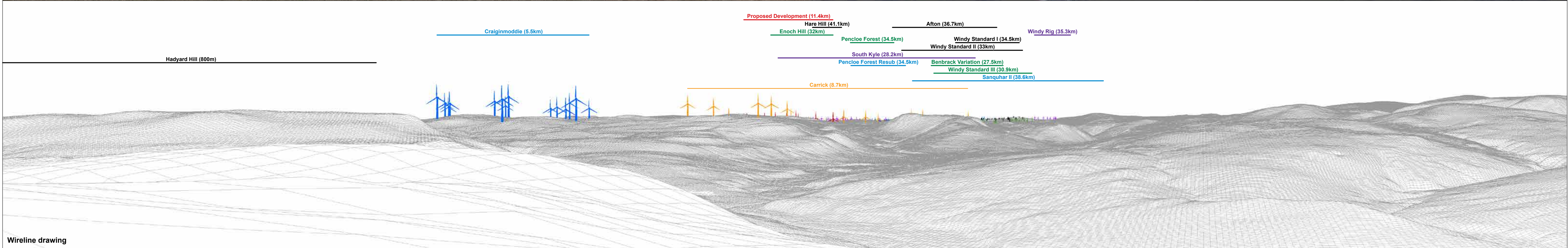
0 0.5 1 km

Scale 1:25,000 @ A3

Knockcronan Wind Farm
 Environmental Impact Assessment Report
 Figure 6.31a

Viewpoint 11: Auchensoul Hill

Date: 08/11/2021 | Drawn by: JM | Checked by: SG | Version: V1



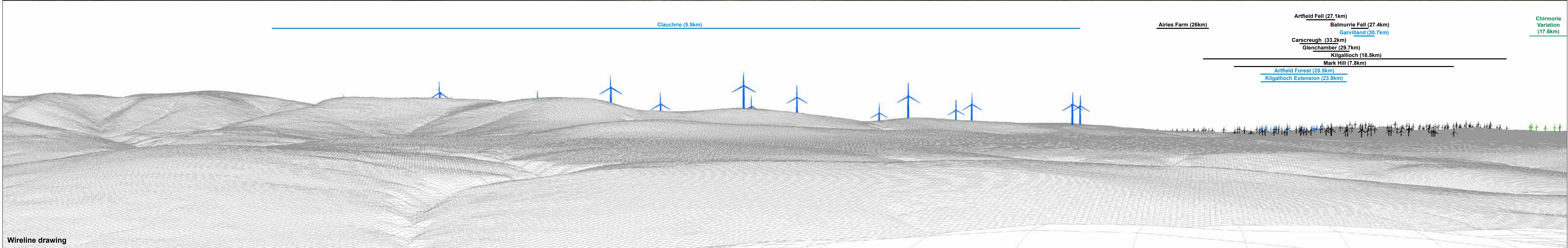
OS reference: 226394 E 594542 N	Horizontal field of view: 90° (cylindrical projection)	Camera: Canon EOS 5D
Eye level: 314.5 mAOD	Principal distance: 522 mm	Lens: Canon EF 50mm f/1.4
Direction of view: 66°	Paper size: 841 x 297 mm (half A1)	Camera height: 1.5 m
Nearest turbine: 11405 m	Correct printed image size: 820 x 130 mm	Date and time: 15/04/2021 15:15

Figure 6.31b
Viewpoint 11: Auchensoul Hill
Knockcronal
© Crown copyright, All rights reserved (2021). Licence number 0100031673



Baseline photograph

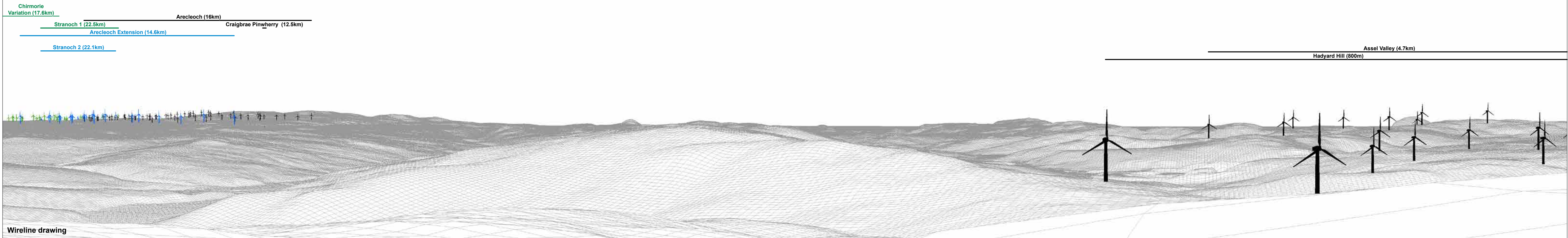
This image provides landscape and visual context only



Wireline drawing

OS reference: 226394 E 594542 N	Horizontal field of view: 90° (cylindrical projection)	Camera: Canon EOS 5D
Eye level: 314.5 mAOD	Principal distance: 522 mm	Lens: Canon EF 50mm f/1.4
Direction of view: 156°	Paper size: 841 x 297 mm (half A1)	Camera height: 1.5 m
Nearest turbine: 11405 m	Correct printed image size: 820 x 130 mm	Date and time: 15/04/2021 15:15

Figure 6.31c
Viewpoint 11: Auchensoul Hill
Knockcronal

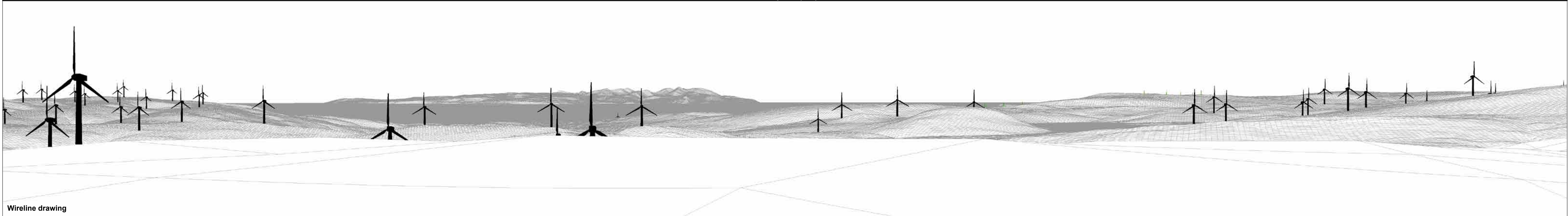


OS reference: 226394 E 594542 N	Horizontal field of view: 90° (cylindrical projection)	Camera: Canon EOS 5D
Eye level: 314.5 mAOD	Principal distance: 522 mm	Lens: Canon EF 50mm f/1.4
Direction of view: 246°	Paper size: 841 x 297 mm (half A1)	Camera height: 1.5 m
Nearest turbine: 11405 m	Correct printed image size: 820 x 130 mm	Date and time: 15/04/2021 15:15

Figure 6.31d
Viewpoint 11: Auchensoul Hill
Knockcronal
© Crown copyright. All rights reserved (2021). Licence number 0100031673

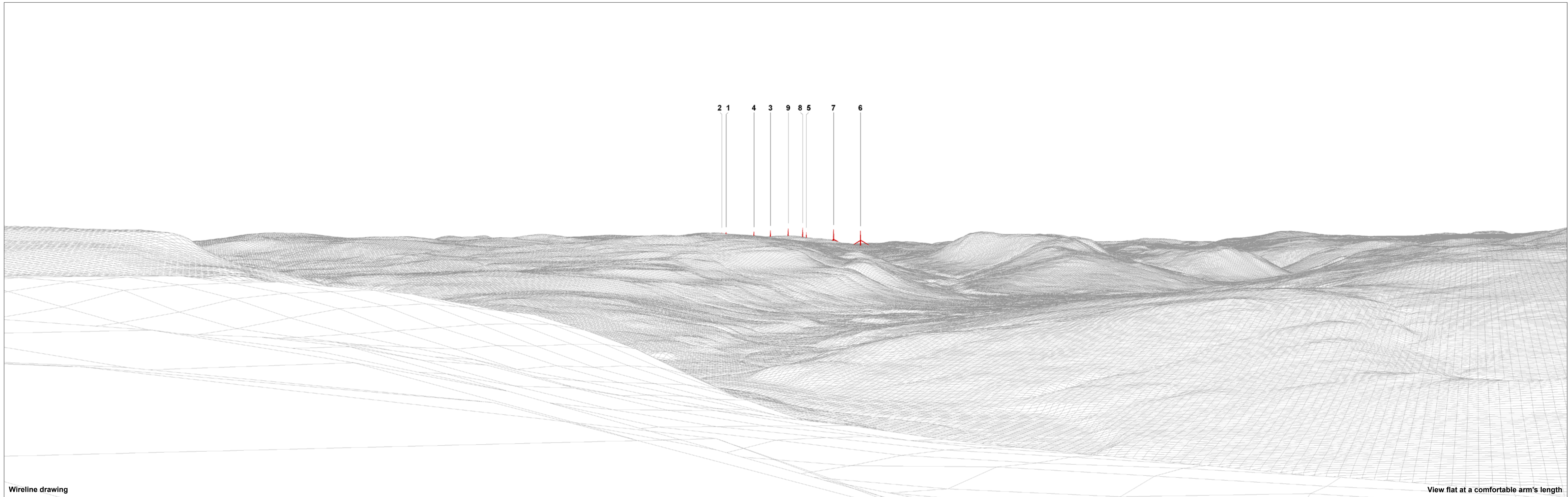


Assel Valley (4.7km) Tralorg (4.9km) Hadyard Hill (800m)



OS reference: 226394 E 594542 N	Horizontal field of view: 90° (cylindrical projection)	Camera: Canon EOS 5D
Eye level: 314.5 mAOD	Principal distance: 522 mm	Lens: Canon EF 50mm f/1.4
Direction of view: 336°	Paper size: 841 x 297 mm (half A1)	Camera height: 1.5 m
Nearest turbine: 11405 m	Correct printed image size: 820 x 130 mm	Date and time: 15/04/2021 15:15

Figure 6.31e
Viewpoint 11: Auchensoul Hill
Knockcronal



Wireline drawing

View flat at a comfortable arm's length

OS reference: 226394 E 594542 N
Eye level: 313.5 mAOD
Direction of view: 66°
Nearest turbine: 11405 m

Horizontal field of view: 53.5° (planar projection)
Principal distance: 812.5 mm
Paper size: 841 x 297 mm (half A1)
Correct printed image size: 820 x 260 mm

Camera: Canon EOS 5D
Lens: Canon EF 50mm f/1.4
Camera height: 1.5 m
Date and time: 15/04/2021 15:15

Figure 6.31f
Viewpoint 11: Auchensoul Hill
Knockcronal



Photomontage: Proposed Development

View flat at a comfortable arm's length

OS reference: 226394 E 594542 N	Horizontal field of view: 53.5° (planar projection)	Camera: Canon EOS 5D
Eye level: 313.5 mAOD	Principal distance: 812.5 mm	Lens: Canon EF 50mm f/1.4
Direction of view: 66°	Paper size: 841 x 297 mm (half A1)	Camera height: 1.5 m
Nearest turbine: 11405 m	Correct printed image size: 820 x 260 mm	Date and time: 15/04/2021 15:15

Figure 6.31g
Viewpoint 11: Auchensoul Hill
Knockcronal

© Crown copyright. All rights reserved (2021). Licence number 0100031673