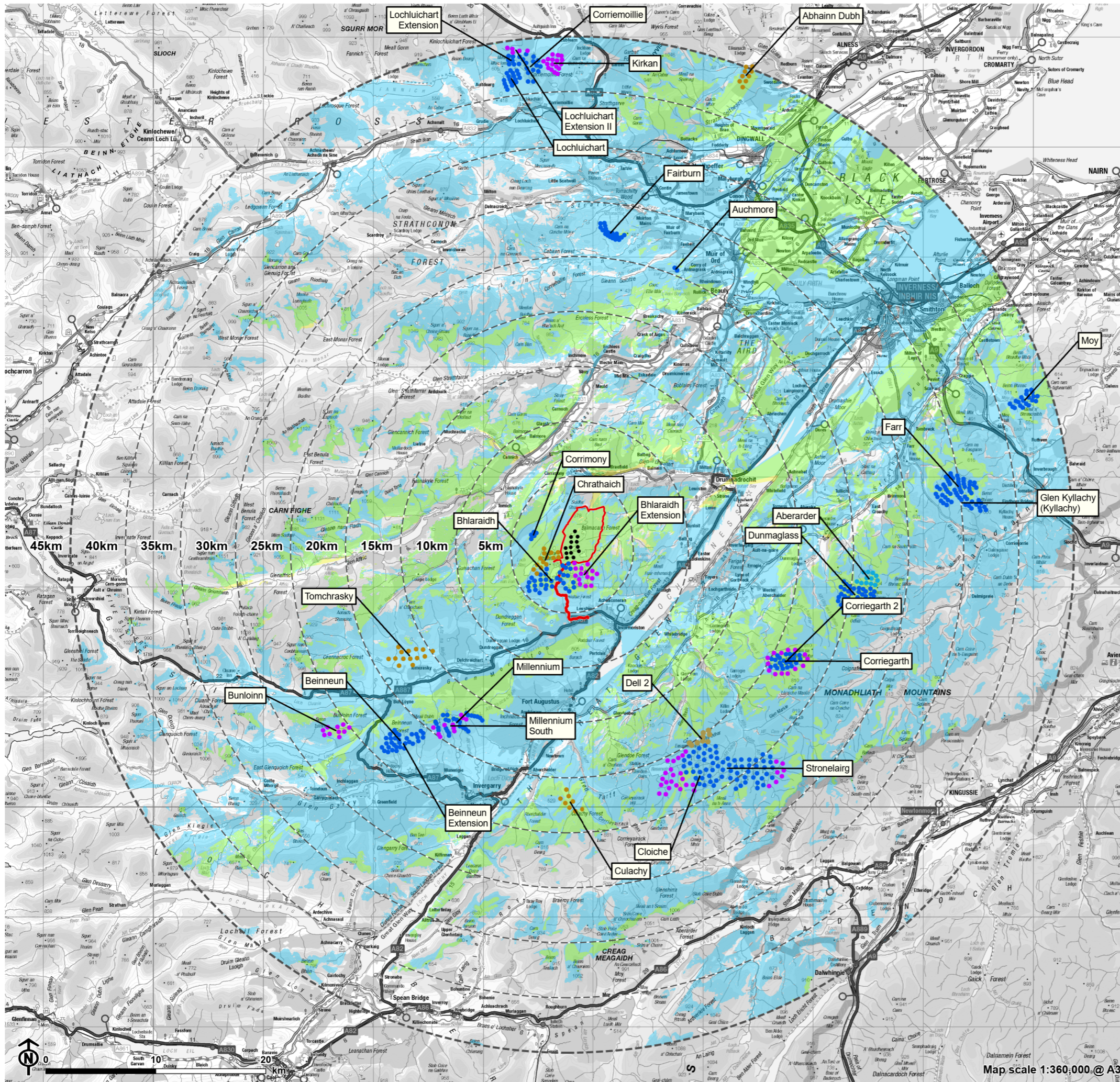


SEI Figure 6.10:
CZTV - Operational, Under Construction, Consented and
Proposed Wind Farms and Loch Liath



- Site boundary
- Turbine
- 5km intervals from outermost turbines
- LVIA study area 45km from outermost turbines
- Theoretical wind farm visibility**
- Only other wind farms visible
- Only Loch Liath wind farm visible
- Both Loch Liath and other wind farms visible
- Wind Farm Status**
- Operational
- Under Construction
- Consented
- Application Submitted
- Application Submitted (Previously Consented)

Notes:
Each ZTV is calculated to turbine tip height from a viewing height of 2m above ground level. The terrain model assumes bare ground and is derived from OS Terrain 5 height data (obtained from Emapsite in June 2023). Earth curvature and atmospheric refraction have been taken into account. The ZTV was calculated using ArcGIS Pro 3.3.1 software.