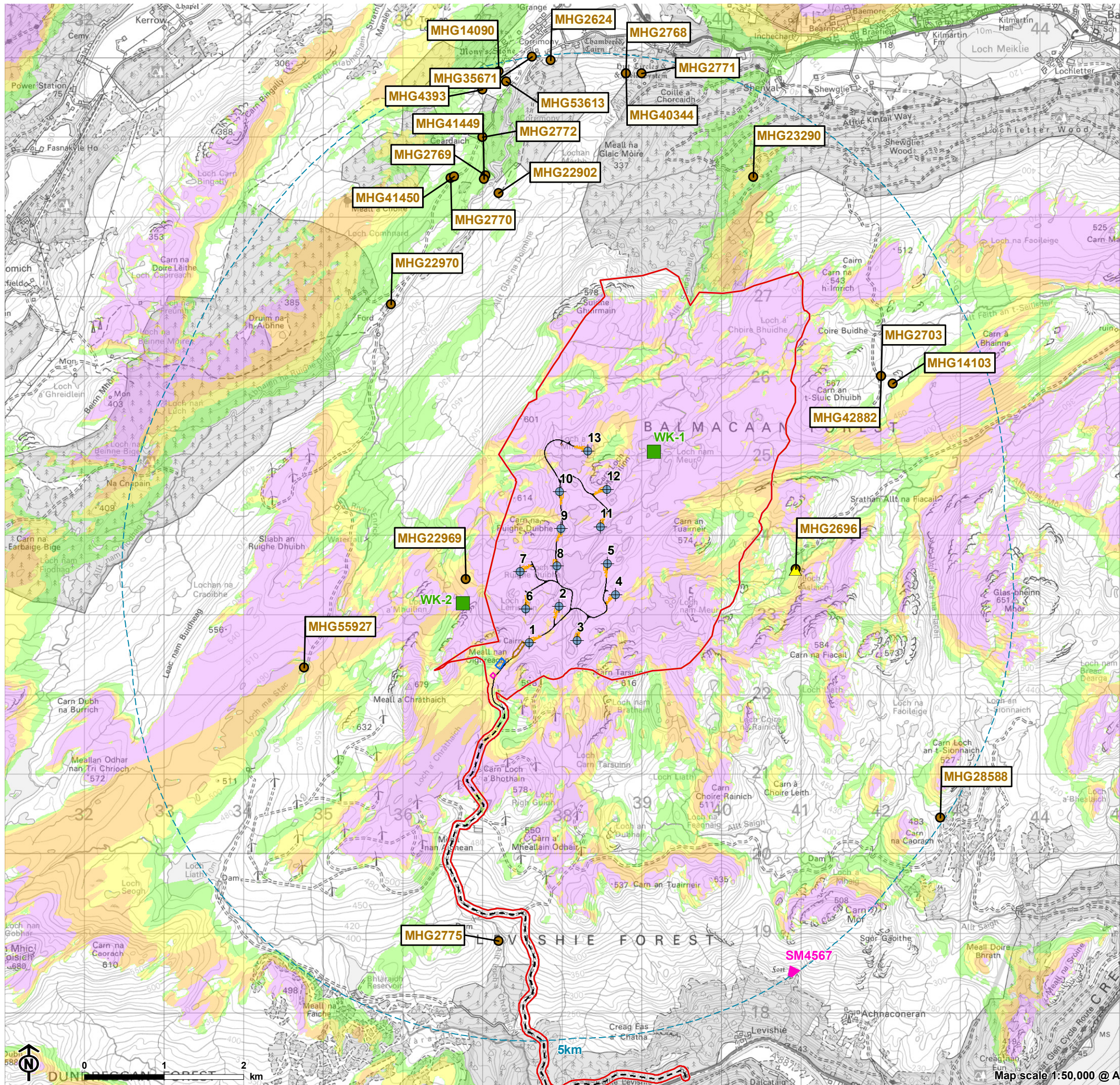


Figure 10.1: The location of heritage assets in the Inner Study Area



- Site boundary
- Turbine
- Construction compound
- Substation
- Borrow pit
- Temporary hardstanding
- Permanent hardstanding
- Met mast
- New access track
- Existing access track
- Designated heritage assets**
 - Inner study area - 5km from outermost turbines
 - Listed Building - Category C
Loch Ashlaich, shooting box and bothy (LB19486)
 - Scheduled Monument (SM) - Levishie Cottage, fort and earthwork
- Non-designated heritage assets**
 - Historic Environmental Record (HER) asset
 - Heritage asset identified during the walkover survey
- Theoretical turbine visibility**
 - 1-4 turbines visible
 - 5-7 turbines visible
 - 8-10 turbines visible
 - 11-13 turbines visible

Notes:

The ZTV is calculated to turbine tip height (180-200m) from a viewing height of 2m above ground level. The terrain model assumes bare ground and is derived from OS Terrain 5 height data (obtained from Emapsite in November 2022). Earth curvature and atmospheric refraction have been taken into account. The ZTV was calculated using ArcMap 10.8.1 software.